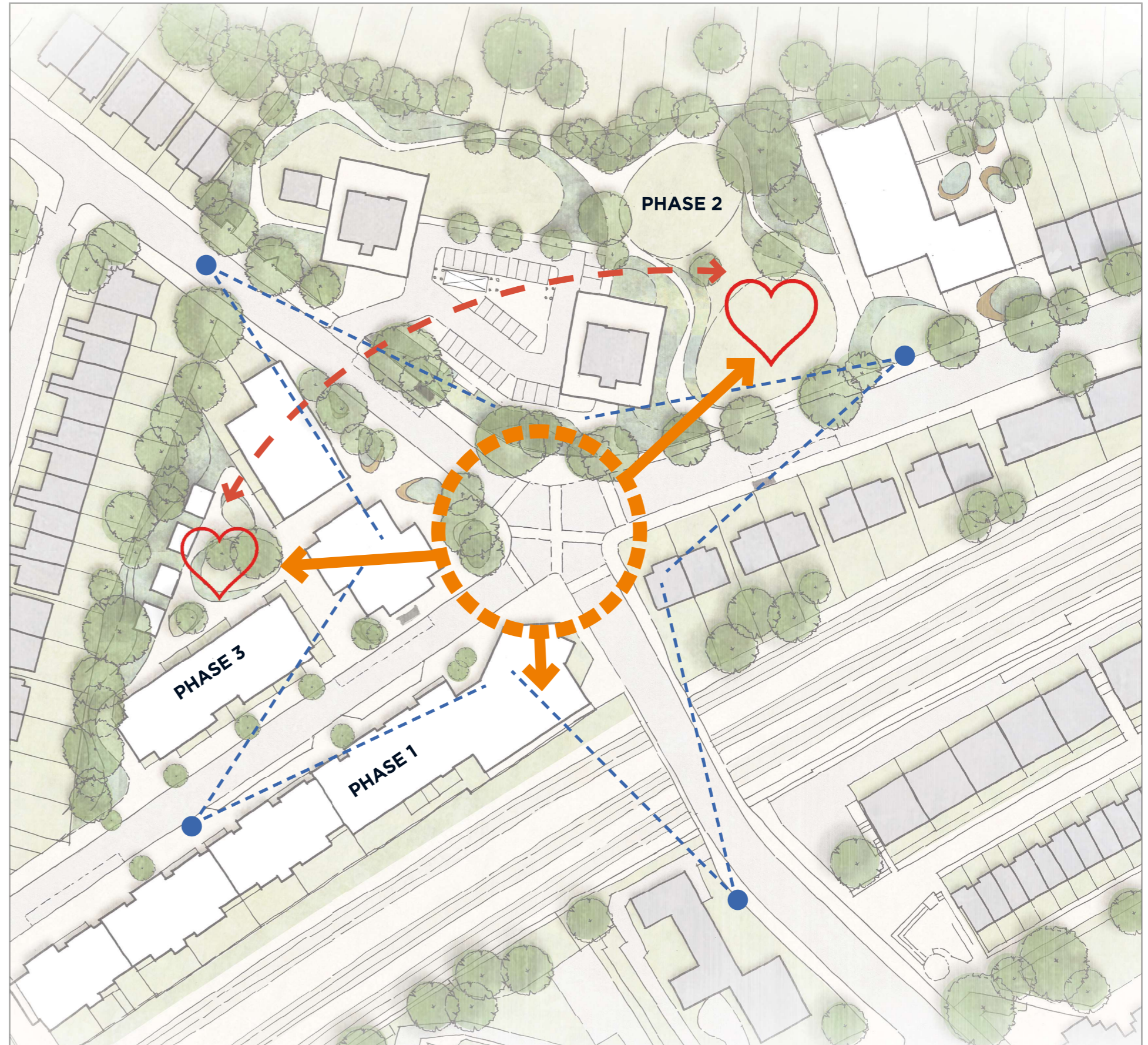


ABBEY AREA PHASE 2 PUBLIC CONSULTATION UPDATE

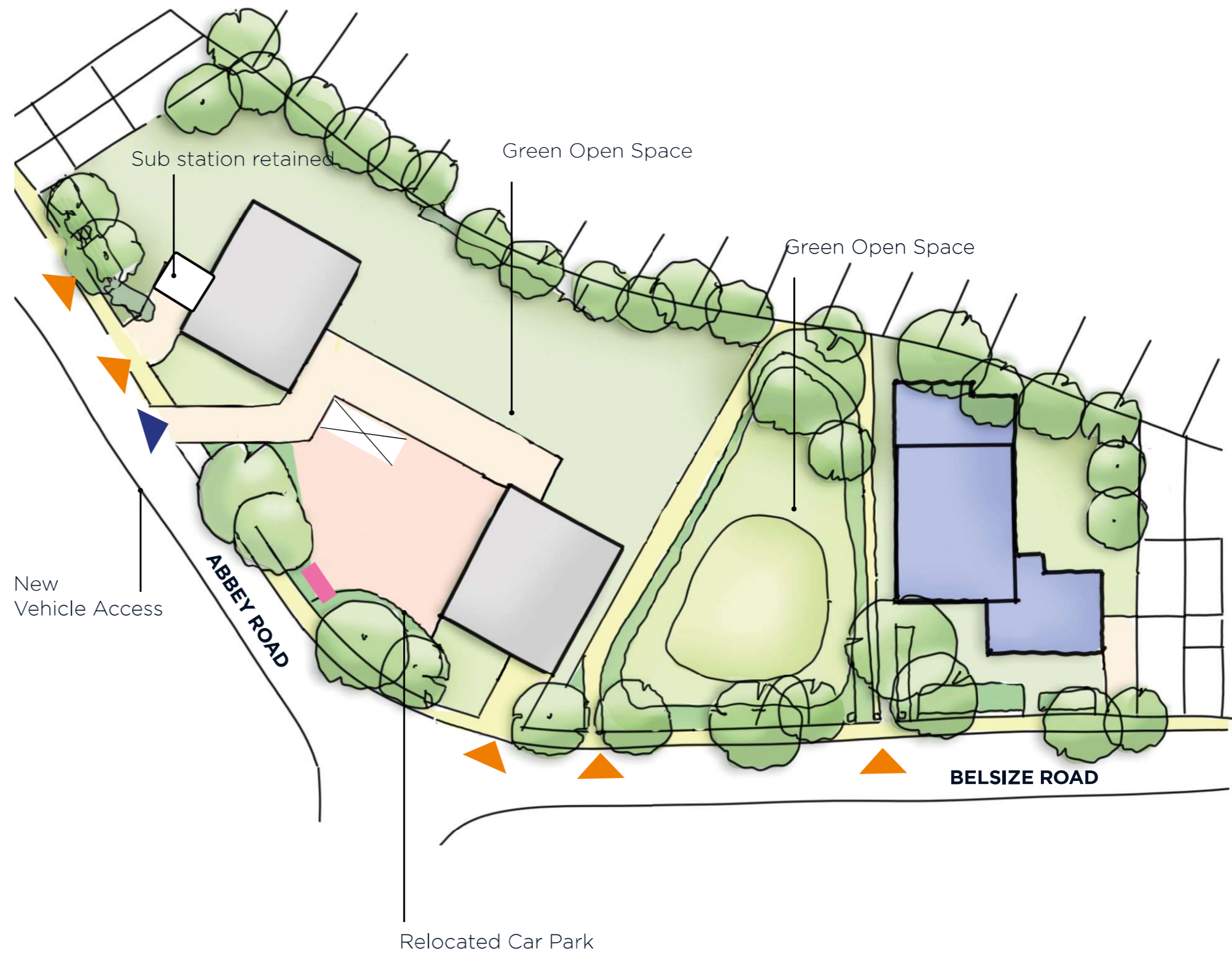
- Part of a 3 phase development to regenerate the local area
- Provide improved and enhanced, fit for purpose facilities to replace the existing Belsize Priory Health Centre and Abbey Community Centre
- Improve Landscape and Public Realm, including enhancements to the junction of Abbey Road and Belsize Road and the removal of bridge on Abbey Road
- Provide play space as a planning condition from phase 1
- Design a building which encourages community interaction to support the Council's aims to improve health and wellbeing



Masterplan

Project Recap

- Following design reviews with London Borough of Camden Planners, it is proposed to relocate the car park between towers. Therefore making the park more accessible and the proposed building benefits from views over park
- Proposed building acts as beacon to draw the public into the open space



Legend

- ▲ Pedestrian Access
- ▲ Vehicular Access
- Cycles
- ✕ Bin Store

Site plan & Analysis

Landscape Strategy



Landscape views



Proposed open space



1. Approach via Belsize Road



2. Approach via open space



3. View from Community Centre

Plan Adjustment

Legend

— Solid Wall

- - - Semi Transparent Wall

⋯ Fully Transparent Wall

↔ Visual link through building

↔ Physical link through building

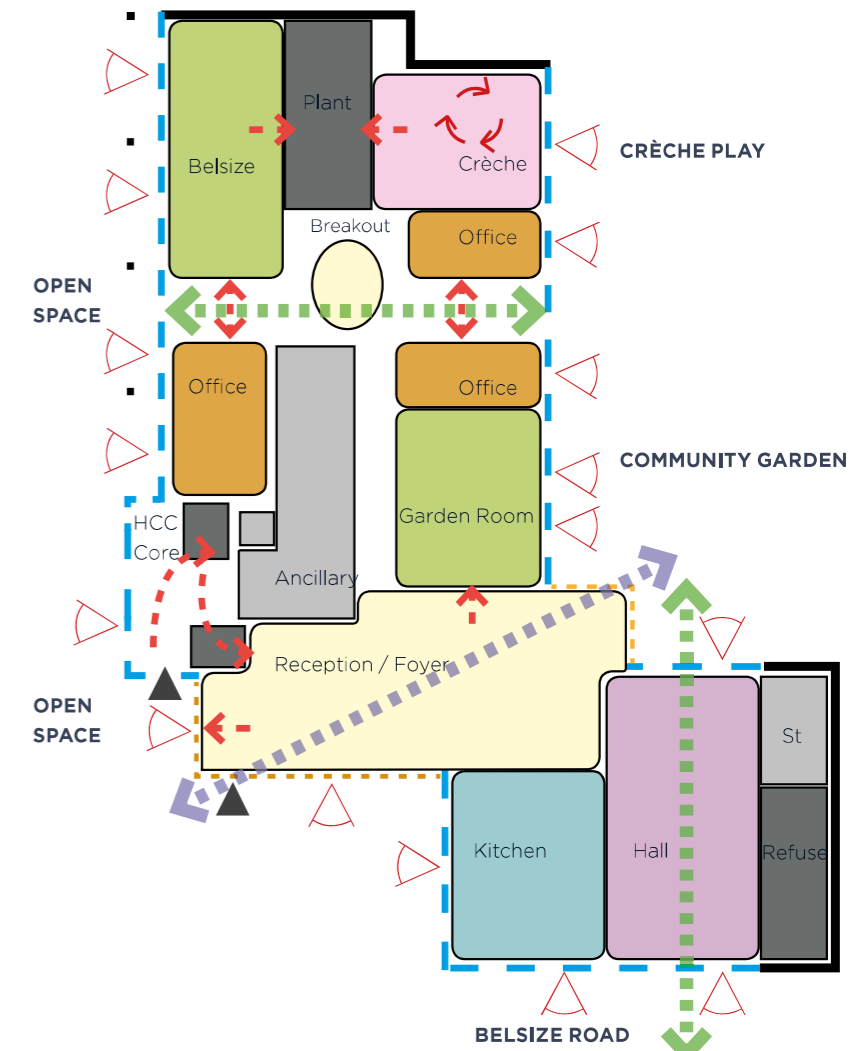
→ Room repositioned

◁ Outlook to landscaped open space

▲ Entrance



Previous Layout



Proposed Layout

Context - The proposed building's relationship to the open space, neighbouring terraces, and surrounding context

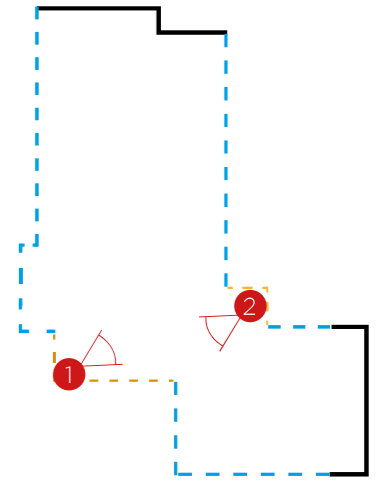
Connection - The look, feel and atmosphere inside, outside and around the proposed building

- Inactive edges on primary façades
- Opportunity to activate open space frontage
- Opportunity to simplify figure ground diagram
- Visual connection through foyer to be retained

- Active edges on primary façades improved
- Open park frontage activated, opportunity to reconfigure core to maximise views in and out
- Figure ground diagram simplified
- Opportunity to explore internal circulation

- Internal street introduced to provide a visual connection from the open space through the building into the community garden
- The Foyer has increased in size, improves the physical connection between open space, building and garden

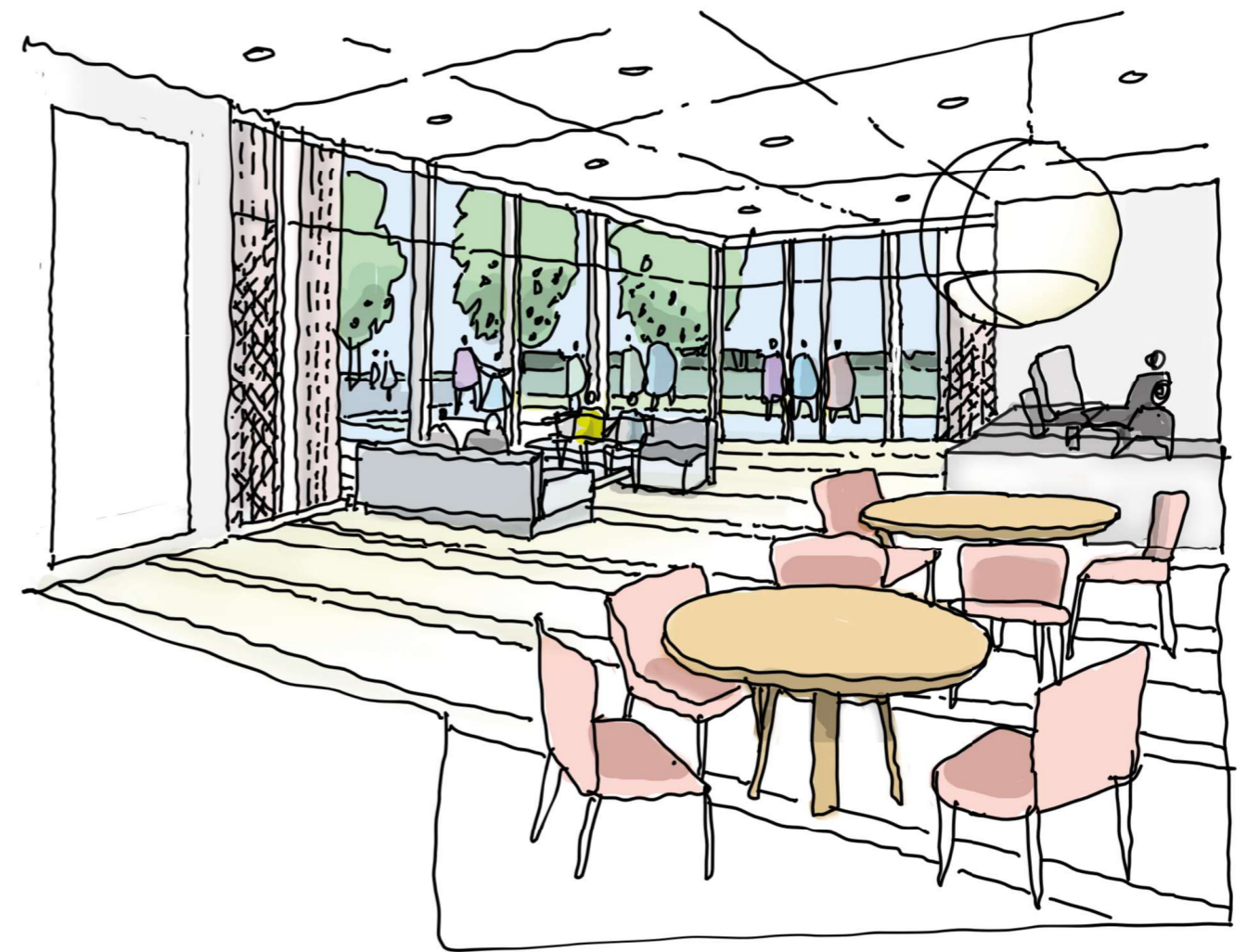
Internal Views - Community Centre



Level 00 Key Plan

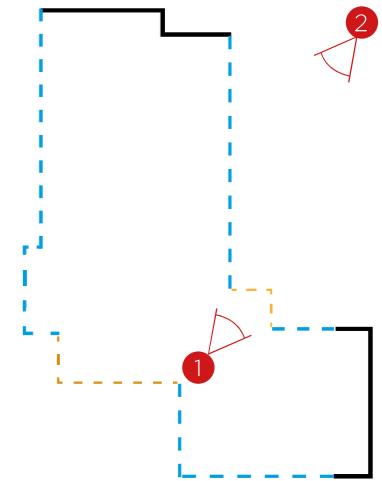


1. Reception area / entrance

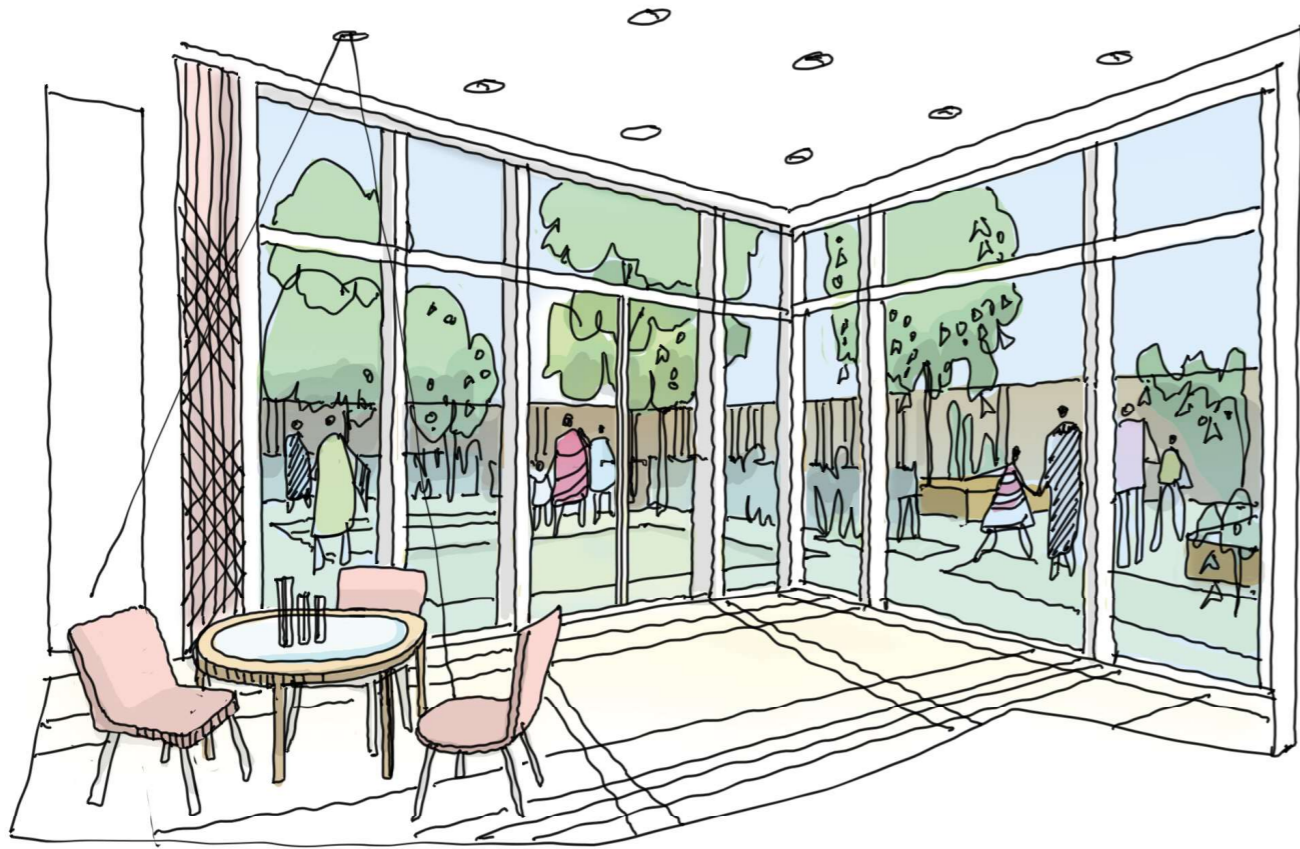


2. Entrance Foyer

Internal Views - Community Centre



Level 00 Key Plan

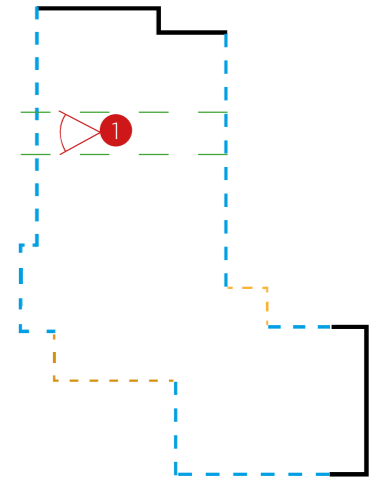


1. Foyer to Community Garden

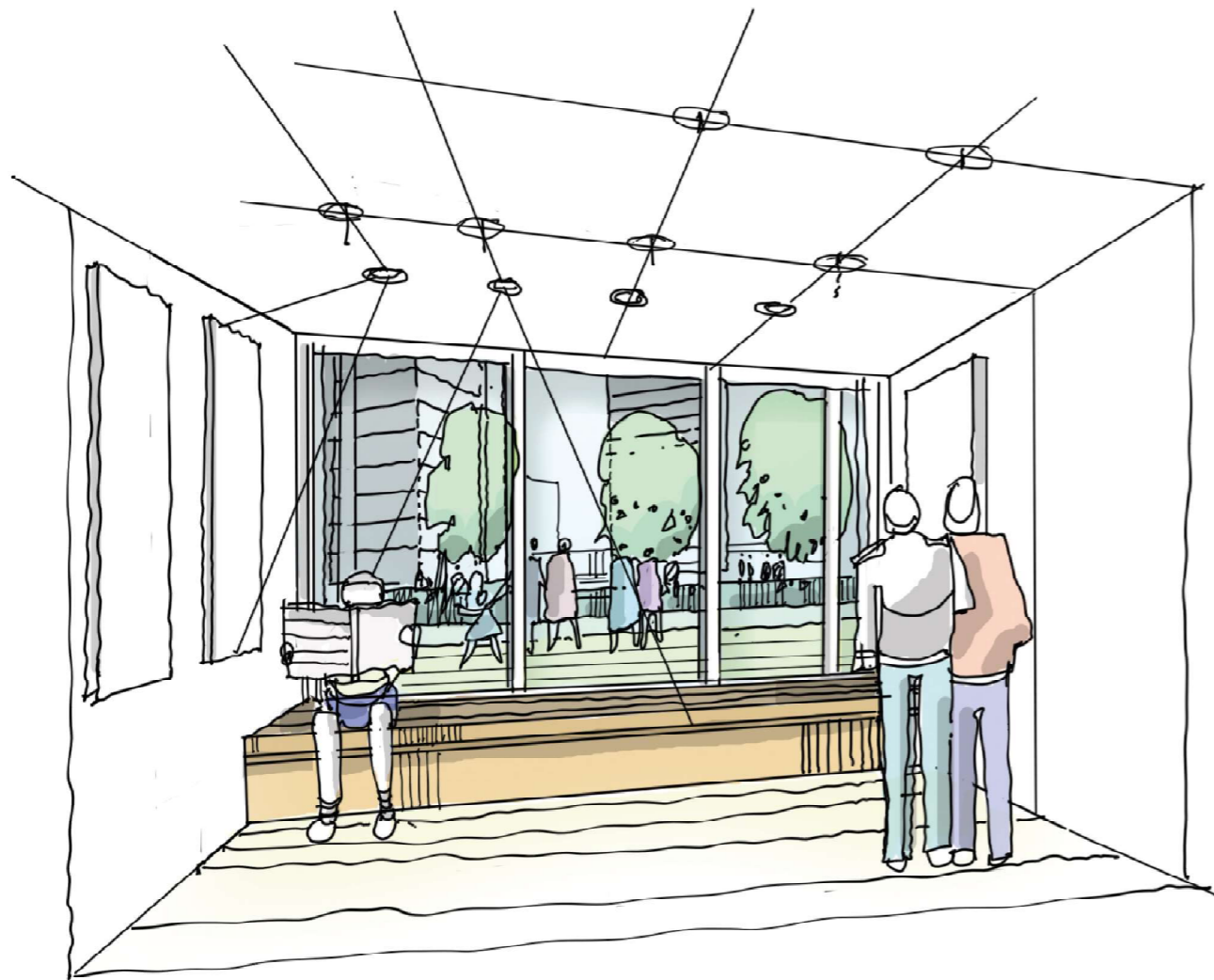


2. Community Garden

Internal Views - Community Centre

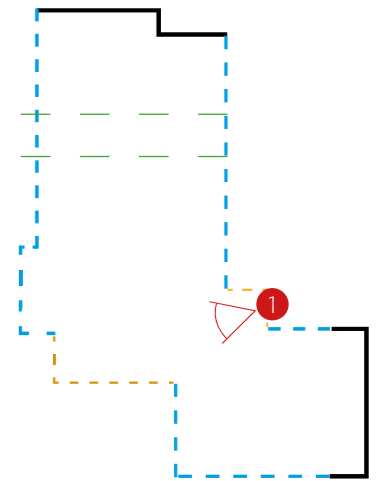


Level 00 Key Plan

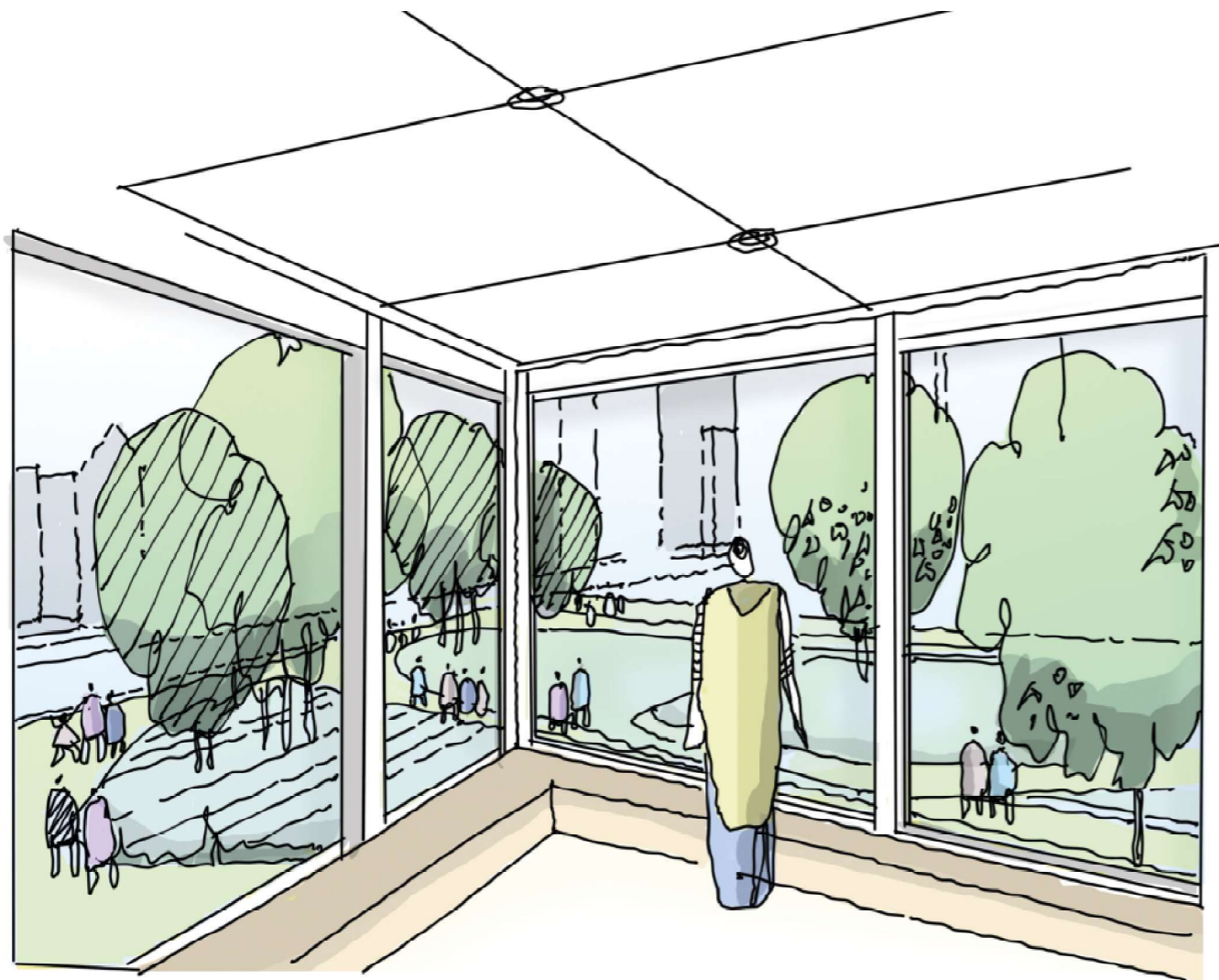


1. Breakout space

Internal Views - Health Centre



Level 01 Key Plan



1. Waiting area overlooking open space

View from Approach Space



View from Belsize Road



View from Park

