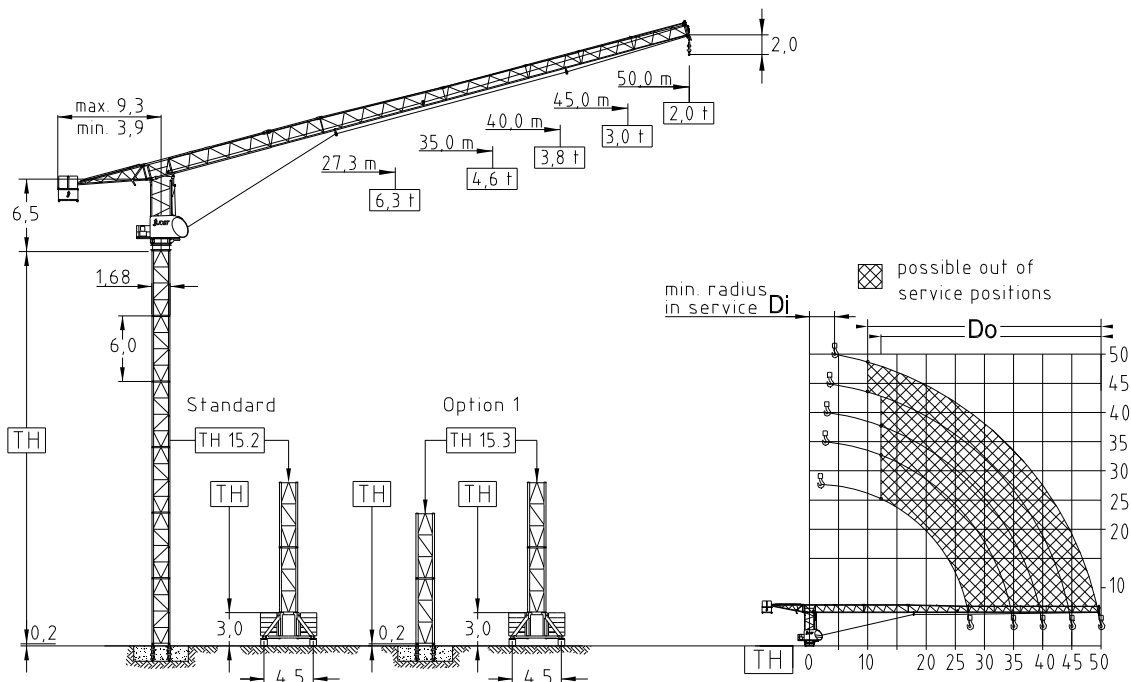


## 1.4 Specification sheet



		Tower heights all data in (m)				
Jib (m)	Jib radius (m)		Standard Tower		Option 1	
	Di	Do	Foundat.	Chassis	Foundat.	Chassis
			TH 15.2	UC 4,5-15.2	TH 15.3	UC 4,5-15.3
27,3	2,2	12,0	39,0	39,0	51,0	39,0
35,0	2,8	12,0	36,0	33,0	48,0	33,0
40,0	3,2	12,0	33,0	30,0	45,0	30,0
45,0	3,6	10,0	30,0	27,0	42,0	27,0
50,0	4,1	10,0	27,0	24,0	39,0	24,0

		Hoist 37,0 kW FI					
φ	t	0,9	1,1	2,0	3,0	3,5	4,0
	m/min	160	148	112	80	72	42
l	t	1,8	2,2	4,0	6,0	7,0	8,0
	m/min	80	74	56	40	36	21
Hook height		1-fall 480,0 m					
		2-fall 240,0 m					

Radius & Capacity											
Jib		max. Load		Jib radius							
m	rope	t	m	22	25	27,3	30	35	40	45	50
50,0	φ	4,0	25,9	4,00	4,00	3,79	3,43	2,92	2,54	2,24	2,00
	l	-	-	-	-	-	-	-	-	-	-
45,0	φ	4,0	34,2	4,00	4,00	4,00	4,00	3,90	3,39	3,00	
	l	8,0	17,3	6,25	5,46	4,97	4,50	3,81	3,30	2,90	
40,0	φ	4,0	38,1	4,00	4,00	4,00	4,00	4,00	3,80		
	l	8,0	19,3	6,97	6,10	5,56	5,03	4,27	3,70		
35,0	φ	4,0	35,0	4,00	4,00	4,00	4,00	4,00			
	l	8,0	20,7	7,05	6,65	5,98	5,42	4,60			
27,3	φ	4,0	27,3	4,00	4,00	4,00					
	l	8,0	21,7	7,89	6,91	6,30					

		Hoist 45,0 kW FI					
φ	t	1,0	1,2	2,0	3,8	3,9	4,0
	m/min	188	172	138	88	68	50
l	t	2,0	2,4	4,0	7,6	7,8	8,0
	m/min	94	86	69	44	34	25
Hook height		1-fall 560,0 m					
		2-fall 280,0 m					

Power requirement	
400V (±10%) - 50Hz	

Shipping		
	Truck	Cont.
Top crane	5	6
Tower 2 units	1	1
Climbing	1	1
Chassis	1	1

Motor	15,0 kW FI	1 x 4,4 kW FI	2 x 5,0 kW
f/v	2,0 min	0,77 rpm	25,0 m/min
Power requirement Upper part		Hoist 37,0 kW	85 kVA
		Hoist 45,0 kW	100 kVA

Counter weight		Ropes	
Block 1	3 x 5,5 t		D (mm)
Block 2	3 x 1,7 t		N/mm <sup>2</sup>
Block 3	-	Hoist	16,0
Total	21,6 t	JOST Cranes GmbH reserve the right to alter or amend any information contained in this datasheet without prior notice and no responsibility can be accepted for errors or omissions.	



EN 14439  
WIND C 25

**JOST Cranes GmbH & Co. KG**  
Schmiedweg 3  
85604 Zorneding  
Germany  
Fon +49-8106 9995580  
Fax +49-8106 9995582  
Mail info@jostcranes.de  
Web www.jostcranes.de

Edition 01-2015