

# Morgan Sindall Construction

## Camden Road

Construction Working Group Meeting



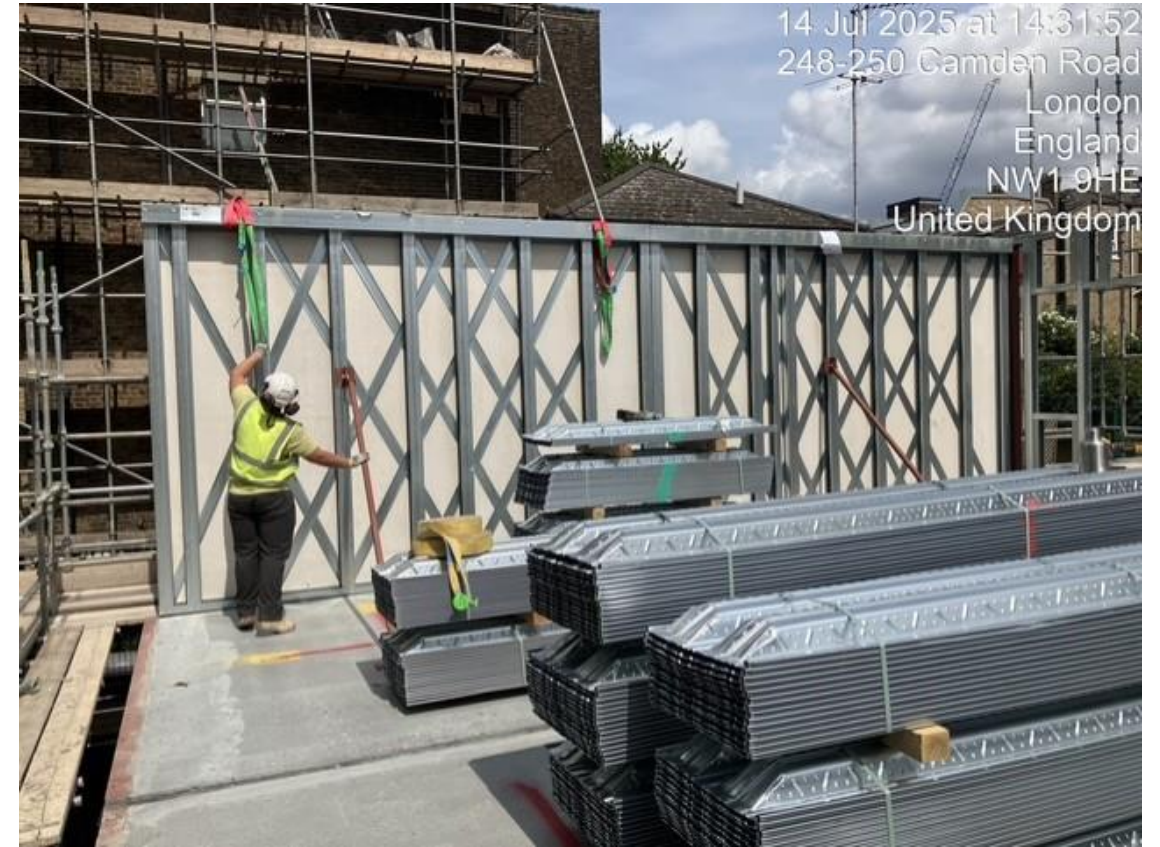


## Progress On Site





## Progress On Site





## Progress On Site





## Progress On Site



## Progress On Site

**Pre-cast Stair and Lift Core Installation** - The pre-cast stair and lift core have been successfully installed. This provides essential vertical access and supports upper-level works.

**Met Frame Structural Frame (Ground Floor to First Floor)** - The Met Frame structural system has been installed from the ground floor up to the first floor.

**First Floor Deck Installation** - The first-floor deck has been completed. This marks a significant step forward, allowing for safe working platforms for trades and forming the base for internal fit-out and services installation above.

## Upcoming Works

**Brickwork and Blockwork Installation** - Work will soon begin on the external and internal brickwork and blockwork. This phase will shape the building's facade and internal partitioning, setting the stage for the next stages of weatherproofing and internal finishes.

**Scaffold Installation (Ongoing)** - Scaffold installation will continue, gradually wrapping around the entire structure. This is crucial to facilitate safe access for ongoing facade works and other external

**Met Frame Structural Frame (First Floor to Fourth Floor)** – Metframe Superstructure will continue to progress onto the upper levels.

# Q&A



TAYLOR MAXWELL

