

Coopers Lane Newsletter

The area below is the wider Central Somers Town Area referred to in the Local Lettings Policy.



- Central Somers Town Area includes**
- Bridgewater Street estate
 - Brook House
 - Chalton House
 - Charrington Street properties
 - Churchway estate
 - Coopers Lane estate
 - Cranleigh House
 - Godwin & Crowndale
 - Goldington Crescent
 - Goldington Street estate
 - Mayford estate
 - Medburn Street
 - Monica Shaw Court
 - Oakshot Court
 - Ossulston estate: all blocks including Walker House, Levita House
 - Penryn Street estate
 - Phoenix Court
 - Phoenix Rd flats
 - Seymour House
 - Somers Close estate

34 new homes for social rent on Purchase Street have now been completed. Coopers Lane residents who are in housing need will be prioritised for offers under Camden's local lettings policy. More information inside.



Your ward councillors

All surgeries are on rotation with ward colleagues



Cllr Samata Khatoun



Cllr Edmund Frondigoun



Cllr Shah Miah

First Friday of the month 6-7 pm

Crowndale Centre (Ground Floor)
218 Eversholt St NW1 1BD

Second Saturday of month 10-11am

Saint Pancras Community Assoc
67 Plender St NW1 0LB

Third Friday of the month 6-7pm

Saint Pancras Community Assoc
67 Plender St NW1 0LB

Women only surgery (By appointment)

Please contact Cllr Khatoun directly.

Winners of the vote for the names of the new blocks

Plots 5 and 6 are the two new blocks of homes in Coopers Lane estate, on the northern end of Purchase Street open space. The development includes a new community hall and a garden for local residents.

Naming a new block is a good way to celebrate and commemorate local history and recognise Camden residents who have made a difference to the area. Over the summer we asked residents to vote on which names they would like for the new blocks.

Thank you to everyone who took part in our consultation.

- Plot 5 is named Mary Shelley House
- Plot 6 is named John Dowling House



John Dowling
(1912 - 1980)

John Dowling (1912 – 1980) was on the St Pancras Council permanent building staff as a painter since 1937. John not only helped in the construction of Park View (formerly Cecil Rhodes) House but was a tenant there until he died possibly sometime in the 1980s.



Mary Shelley
(1797-1851)

Born in 1797 Mary Shelley (1797-1851) was an English novelist who is best known for her Gothic novel Frankenstein. She was raised at The Polygon - a fifteen sided building of 32 houses situated around a garden on Polygon Road which was demolished in 1890.

New homes for social rent in Somers Town



Mary Shelley House and John Dowling House are the new blocks at the Hampden Close end of Purchase Street open space. The two blocks provide 34 new affordable homes.

There will be

- 4 x 3-bedroom flats,
- 17 x 2-bedroom flats and
- 13 x 1-bedroom flats.

This creates additional much needed family-friendly homes.

The Council want the new homes for social rent to be managed by the new Camden Living Housing Association. This is subject to final approval of the Regulator for Social Housing in the new year.

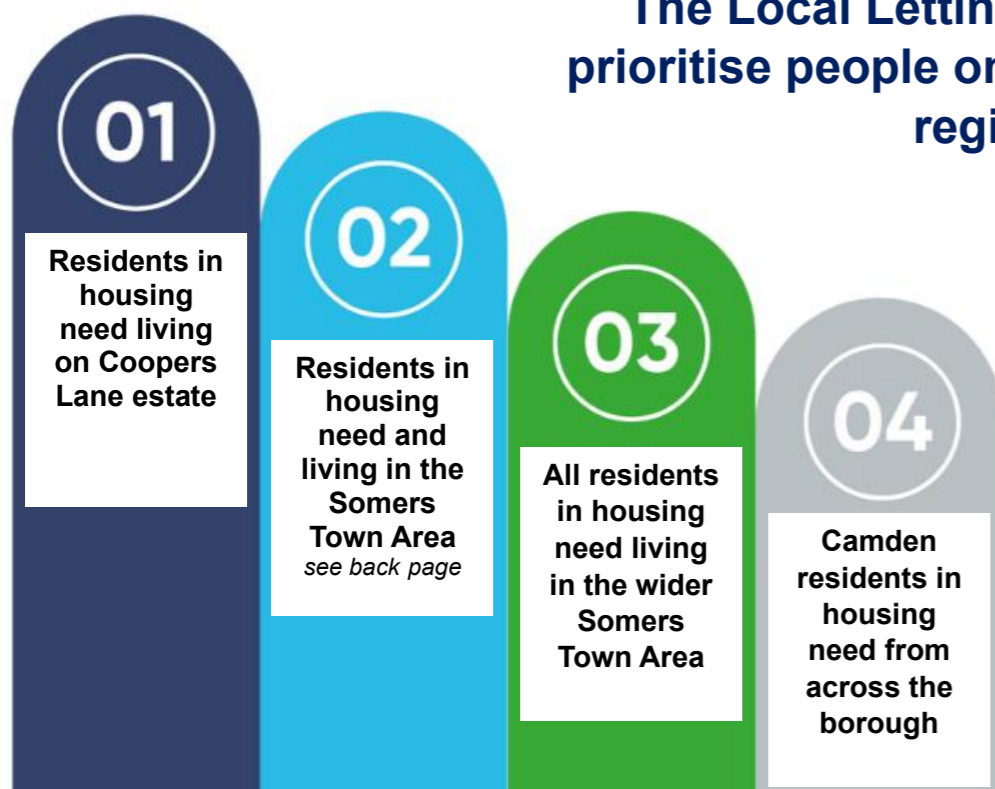
The new homes will be allocated by the Council, so people registered on the Camden's housing register will be able to bid for the flats once these homes become available.

Good to know:

There are no additional costs to rents or service charges for existing residents living on Coopers Lane as a result of these new homes.

- **Social housing is the most affordable type of housing. It is rented from the Council or a housing association.**
- **Tenants in the new homes will have similar terms to other Camden tenants.**
- **The properties will be managed by Camden officers**

The Local Lettings Policy will prioritise people on the housing register like this:



Make sure you're ready to bid for a new home



How to apply for the new homes

You can access the housing register online – it's easy, quick and secure. Use this link: www.camden.gov.uk/apply-council-housing

If you are unable to use our online services and need to speak to us, call **020 7974 444**

Lines are open from Monday to Friday 8am – 5pm (except Bank Holidays) Only emergency calls will be handled outside these hours

You may wish to call during our quieter times, usually between 8am - 10am and 4pm - 5pm, particularly on Fridays.

If you are unable to access online or by phone, the Camden reception area is accessible for those with disabilities. Open Monday – Friday 10am – 4pm.

Contact Camden reception, 5 Camden Square, London N1C 4AG

If you are D/deaf or hard of hearing, call us free, 24 hours a day, using SignVideo. Scan the QR code:

