

Morgan Sindall Construction

Chester Road

Construction Working Group Meeting –
November 2025



Works completed in the period

Superstructure – The main structures of the blocks have now been built and topped out

Roof – Initial layer of waterproofing has been applied

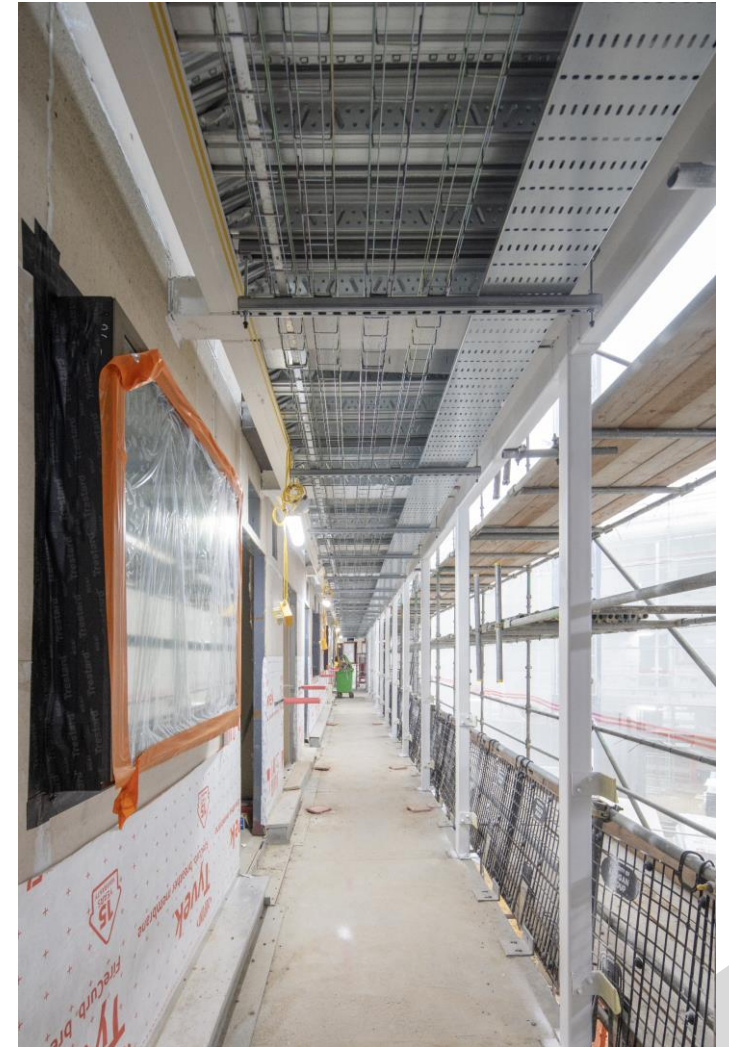
Fitout – Fitout progressing on Level 01 of all three blocks, internal drylining and M&E install

Façade – The façade finishes are on going, following the window install. This includes brickwork, insulation and fire barriers,

Progress On Site



View from Dartmouth Park Hill & Walkway Progress



Progress On Site



Staircase & Walkway Progress



Progress On Site



Roof Progress

Progress On Site



Walkway & Window Progress

Progress On Site



Staircase Progress

Progress On Site



Apartment & Staircase Progress

Progress On Site



Drone Footage from September

Upcoming Works

Fitout – As the building becomes watertight, we will continue to progress with our internal fitout, building plasterboard partitions and installing the Mechanical and Electrical systems to the units.

Roof – As we approach the crane strike date, the roofing progress will be critical in to meet the deadline. PV Panels and Green Roofs will start to be laid over the next period.

Crane Strike – Currently scheduled for **10/01/26 & 11/01/26** (2 way traffic light on Dartmouth Park Hill – no full road closure)

Façade – The façade is now well underway. Insulation and Fire Barrier install is on-going, following the window install. Terracotta cladding will start to be installed over the next period.

Social Value Update

Employment Skill Training:

Brickwork subcontractor appointed two apprentices from Camden.

Mechanical Electrical Plumbing subcontractor appointed an apprentice from Camden

We are currently recruiting for:

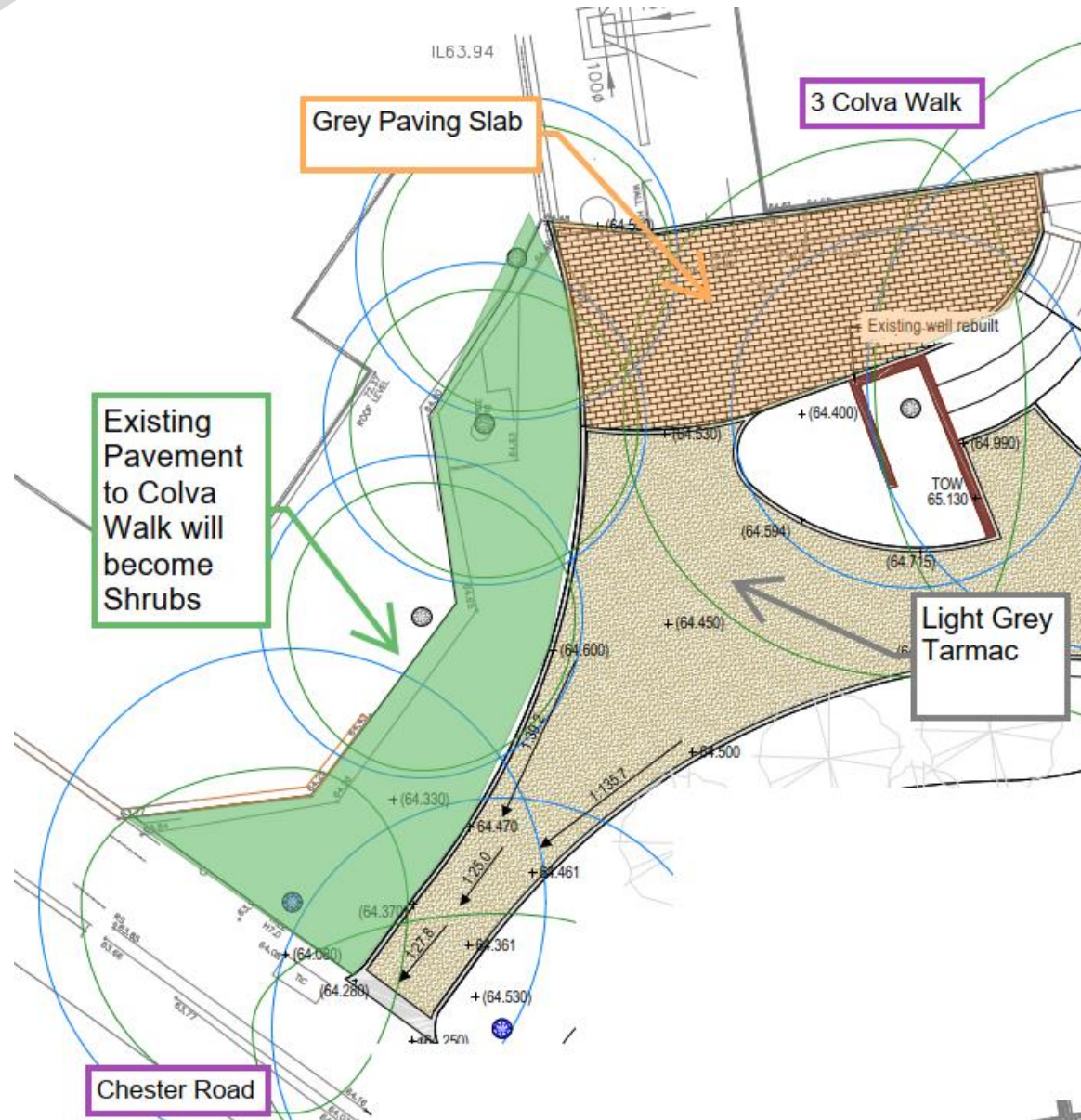
- Carpentry Apprentice
- Drylining Apprentice
- Skilled Drylining Fixer

Contact Monica at Monica.Paul@morgansindall.com if interested in these vacancies.

Wider community engagement:

- On the 19th of November, we are supporting a careers fair at Heath School (PRU – alternative provision).
- We currently have a student from New City College, Kings Cross campus currently on a five-week placement with the Chester Road project team
- 47/47 CCS Score

Colva Walk - Landscaping

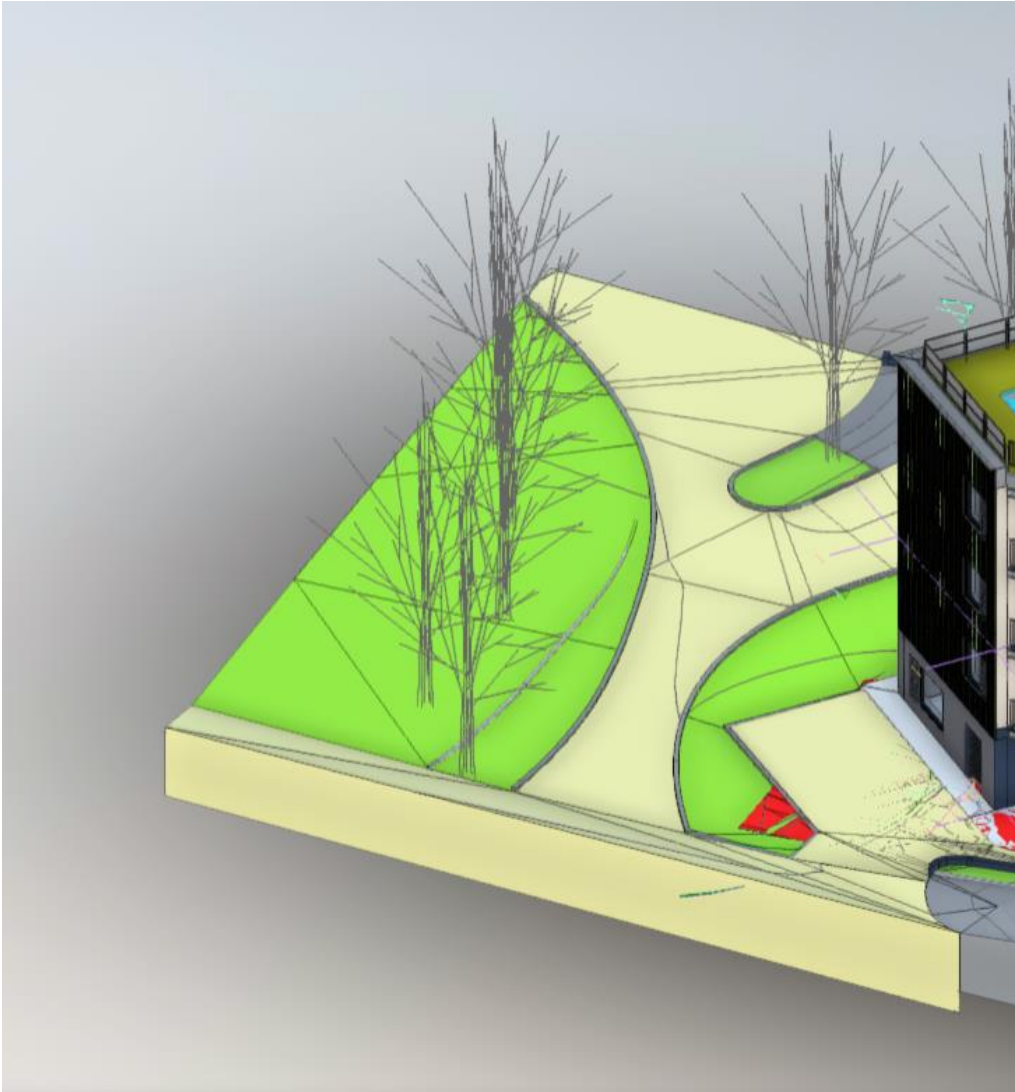


Existing Colva Walk Footpath Walking
towards Chester Road

Sample Finishes

Marshalls	Conservation X Paving	Colour: Silver Grey Textured riven finish 240 x 160 x 80 mm laid in stretcher bond	
Tarmac	ULTICOLOUR Porous 10mm	asphalt Colour: Light Grey Thickness: 30-45mm Porosity: 5000mm/hour	

Colva Walk - Landscaping



The existing Colva Walk Pavement will be replaced with Shrubs and planting.

The new route will be moved further towards the new building, away from the trees on new tarmac

Not an accurate representation of how the final building will look

Q&A