

## PM<sub>10</sub> Monitoring Report

June 2021

Highgate Newtown Community Centre

[www.phlorum.com](http://www.phlorum.com)

## PM<sub>10</sub> Monitoring Report (June 2021)

### Highgate Newtown Community Centre

London Borough of Camden

5 Pancras Square  
London  
N1C 4AG

Document Control:

Project no.	Project
9556.S	Highgate Newtown Community Centre

Report No.	Written By:	Checked by:	Authorised by:	Date
9556 PM10 Report (June 2021)	J. Mills	R. Boakes	R. Boakes	01/07/2021

This report has been prepared for the exclusive use of the commissioning party and may not be reproduced without prior written permission from Phlorum Limited.

All work has been carried out within the terms of the brief using all reasonable skill, care and diligence.

No liability is accepted by Phlorum for the accuracy of data or opinions provided by others in the preparation of this report, or for any use of this report other than for the purpose for which it was produced.

#### Phlorum Limited

Southern Office: Unit 12, Hunns Mere Way, Woodingdean, Brighton, East Sussex, BN2 6AH  
T: 01273 307 167 E: [info@phlorum.com](mailto:info@phlorum.com) W: [www.phlorum.com](http://www.phlorum.com)

# Contents

---

<b>1.</b>	<b>Monitoring Programme.....</b>	<b>1</b>
<b>2.</b>	<b>Monitoring Results.....</b>	<b>3</b>

## Figures

Figure 1: Map of monitoring locations

Figure 2: Monitor 1 – SW Residential

Figure 3: Monitor 2 – NE Courtyard

## Graphs

Graph 1: 15-minute mean time-series

Graph 2: 1-hour mean time-series

# 1. Monitoring Programme

---

## Introduction

- 1.1 Phlorum Limited has been commissioned by the London Borough of Camden (LBC) to undertake PM<sub>10</sub> dust monitoring at Highgate Newtown Community Centre, 25 Bertram St, Highgate, London N19 5DQ.
- 1.2 Dust monitoring is required for the demolition of existing buildings on site and a mixed-use re-development of the site incorporating new blocks for residential and community use (planning ref **2018/5774/P**).
- 1.3 PM<sub>10</sub> dust monitoring is required throughout the circa 98-week build programme, including a period of baseline monitoring. Monthly reports are required throughout this phase to be supplied to the LBC air quality team.
- 1.4 This report provides details of the monitoring programme and associated results and covers the monitoring period:

 1<sup>st</sup> June 2021 to the 30<sup>th</sup> June 2021, inclusive.

## Guidance and consultation

- 1.5 The dust monitoring programme follows guidance set out in the Greater London Authority (GLA) Control of Dust and Emissions During Construction and Demolition Supplementary Planning Guidance (SPG)<sup>1</sup>, as well as the Institute of Air Quality Management (IAQM) Guidance on Monitoring in the Vicinity of the Demolition and Construction Sites<sup>2</sup>.
- 1.6 The approach to the monitoring programme, as outlined below, was agreed with the air quality officer at LBC in advance of the installation.

## Dust monitoring units

- 1.7 As requested during consultation with LBC, two 'MCERTS' indicative real-time PM<sub>10</sub> monitors were installed on site on Friday 28<sup>th</sup> February 2020 and were connected to power and began transmitting data on 2<sup>nd</sup> March 2020.

---

1 GLA Control of Dust and Emissions During Construction and Demolition Supplementary Planning Guidance, 2014:  
[https://www.london.gov.uk/sites/default/files/gla\\_migrate\\_files\\_destination/Dust%20and%20Emissions%20SPG%208%20July%202014.pdf](https://www.london.gov.uk/sites/default/files/gla_migrate_files_destination/Dust%20and%20Emissions%20SPG%208%20July%202014.pdf)

2 IAQM Guidance on Monitoring in the Vicinity of the Demolition and Construction Sites, 2018:  
[https://iaqm.co.uk/text/guidance/guidance\\_monitoring\\_dust\\_2018.pdf](https://iaqm.co.uk/text/guidance/guidance_monitoring_dust_2018.pdf)

- 1.8 Full details of the dust monitoring units, including service history, calibration, and installation dates, are provided below in Table 1.1.




**Table 1.1: Dust monitor details**

Item	Monitor 1 – SW Residential	Monitor 2 – NE Courtyard
	ID: s/n 1595   #177 MP2	ID: s/n 1597   #178 MP1
Dust Monitor	Aeroqual Dust Sentry (MCERTS certified)	Aeroqual Dust Sentry (MCERTS certified)
Serial Number	DS 03052021-1595	DS 03052021-1597
Location (lat, long)	51.5626°N, -0.1439°E	51.5629°N, -0.1429°E
Inlet Height	c. 1.5m	c. 3m
Last Calibrated	June 4 <sup>th</sup> 2021	June 4 <sup>th</sup> 2021
Calibration Due	June 4 <sup>th</sup> 2023	June 4 <sup>th</sup> 2023
Installation	28 <sup>th</sup> February 2020 / 2 <sup>nd</sup> March 2020	28 <sup>th</sup> February 2020 / 2 <sup>nd</sup> March 2020

- 1.9 An updated map of the dust monitoring locations is provided in Figure 1, with new photographs of the units installed on site provided in Figures 2 and 3.

## Trigger Levels

- 1.10 The following trigger levels were set at the request of LBC's air quality officer:

-  'Warning' level: 150µg.m<sup>-3</sup> (15-minute average);
-  'Action' level: 250µg.m<sup>-3</sup> (15-minute average);
-  'Action' level: 190µg.m<sup>-3</sup> (1-hour average).

## 2. Monitoring Results

### Monitoring period

- 2.1 The results presented in this section of the dust monitoring report relate to the monitoring period 1<sup>st</sup> June to 30<sup>th</sup> June 2021, inclusive.

### Details of works during monitoring period

- 2.2 Works on site commenced at the beginning of May 2021 and continued through June 2021. The construction activities which occurred during the June monitoring period include the following:

- 👁 Excavation and subsequent pouring of concrete foundations;
- 👁 Stoning up of work zones;
- 👁 Tying of rebar.

### Summary data during monitoring period

- 2.3 The data in Table 2.1, below, provides a summary of exceedances of the trigger levels, as well as average concentrations and valid data capture.

**Table 2.1: Summary table of exceedances of trigger levels**

Item	Monitor 1 – SW Residential	Monitor 2 – NE Courtyard	Explanation
	ID: s/n 1597   #178 MP1	ID: s/n 1597   #178 MP1	
Data Capture	98.1%	99.3%	There were no major connectivity issues during this monitoring period.
Average Daily Mean PM <sub>10</sub> Concentration (µg.m <sup>3</sup> )	5.9	6.4	-
15-Minute mean Trigger Level Exceedances	0	0	There were no exceedances of the 15-minute mean trigger level during June 2021.
1-Hour mean Trigger Level Exceedances	0	0	There were no exceedances of the 1-Hour mean trigger during June 2021

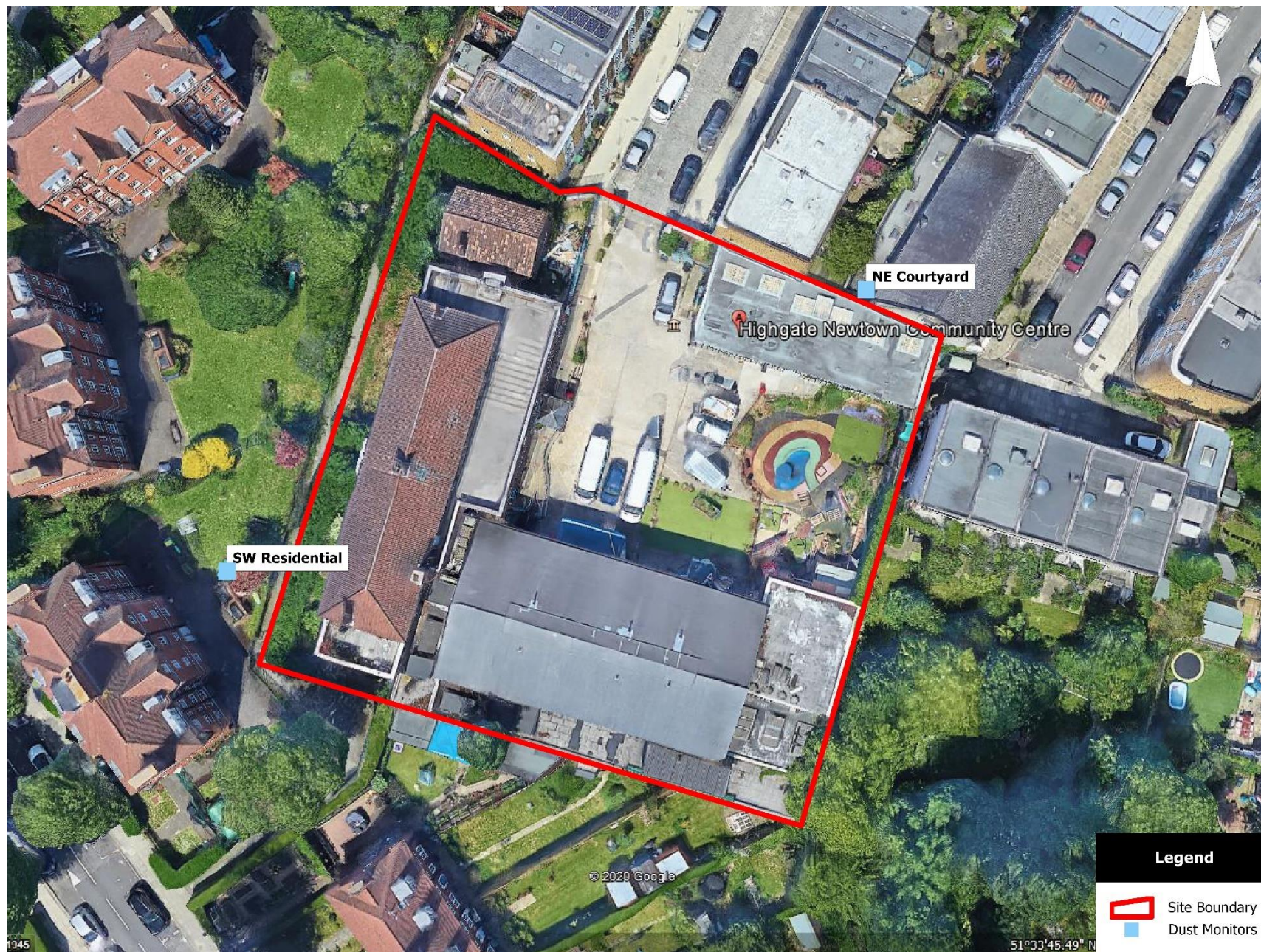
- 2.4 Graph 1 provides the 15-minute average PM<sub>10</sub> time-series for the monitoring period. It shows that there were no exceedances of the 15-minute 'Warning' level at either monitor during June 2021.
- 2.5 There were no exceedances of the 15-minute 'Action' trigger level at either monitor during this period. Overall, there is good agreement in the trend lines for both monitors which suggests that there are few significant localised dust sources in close proximity to either monitor.
- 2.6 Graph 2 provides the 1-hour average PM<sub>10</sub> time-series for the monitoring period. It shows that there are no exceedances of the 'Action' trigger level. Again, there is good agreement in the trend lines for both monitors, suggesting that there are few significant localised dust sources in close proximity to either monitor.

## Summary of results

- 2.7 There were no exceedances of either the 15-minute 'Warning' level or the 'Action' trigger levels at either Monitor 1 or Monitor 2 throughout this monitoring period.
- 2.8 There were no exceedances of the 1-hour mean 'Action' trigger level during the monitoring period.
- 2.9 Overall, there is good agreement in the trend line for both monitors, however, it is worth noting that there were some brief, localised spikes in PM<sub>10</sub> concentrations observed at both monitors.
- 2.10 The construction works which commenced on site at the beginning of May 2021 continued throughout June 2021. Therefore, the results presented within this report for June 2021 relate to the second period of construction phase monitoring.

Figure 1: Map of monitoring locations





Figures



## Figure 2: Monitor 1 – SW Residential



### Figure 3: Monitor 2 – NE Courtyard

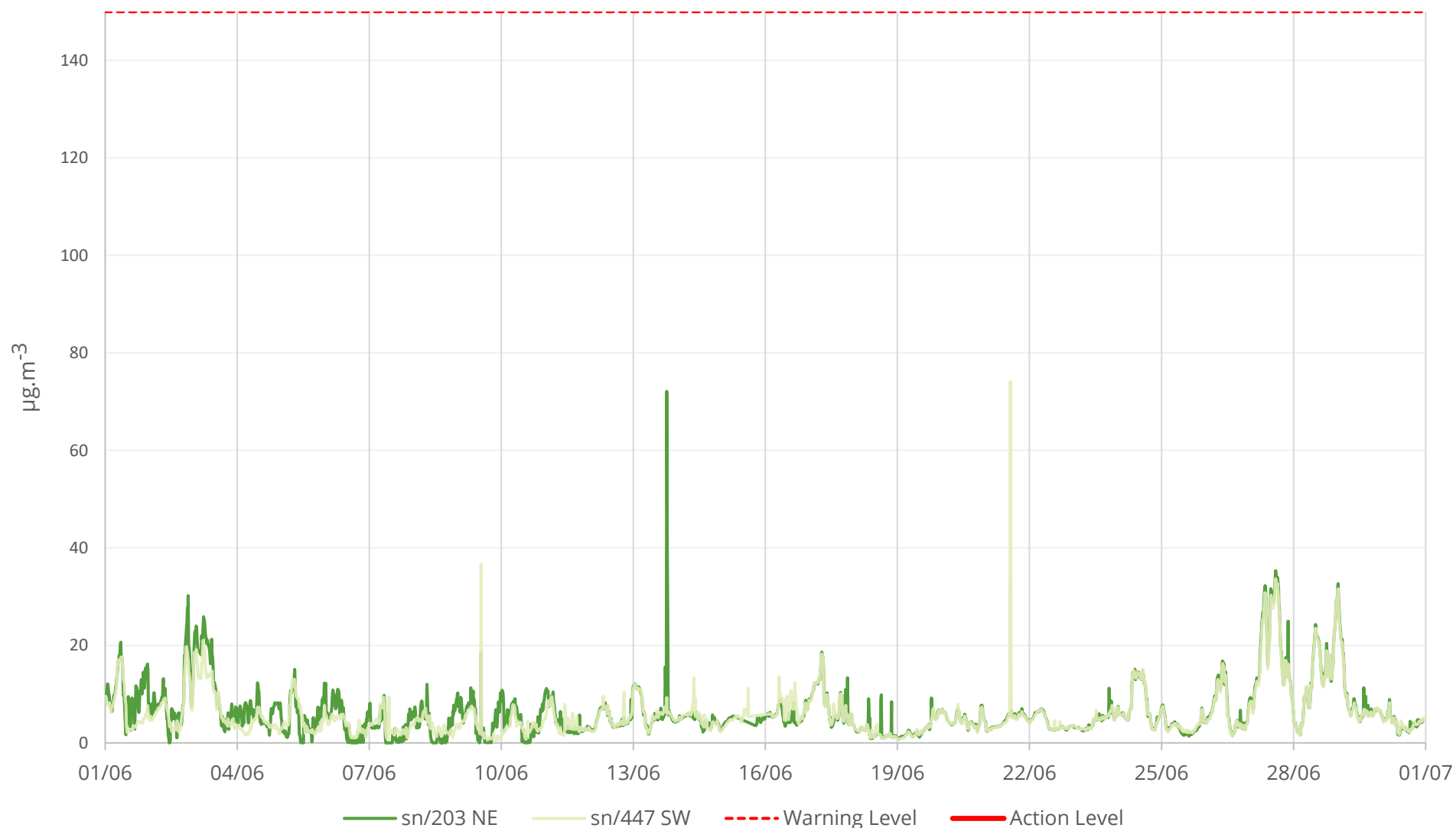




Note: This monitor was moved on 25<sup>th</sup> August 2020.

## Graph 1: 15-minute mean time-series

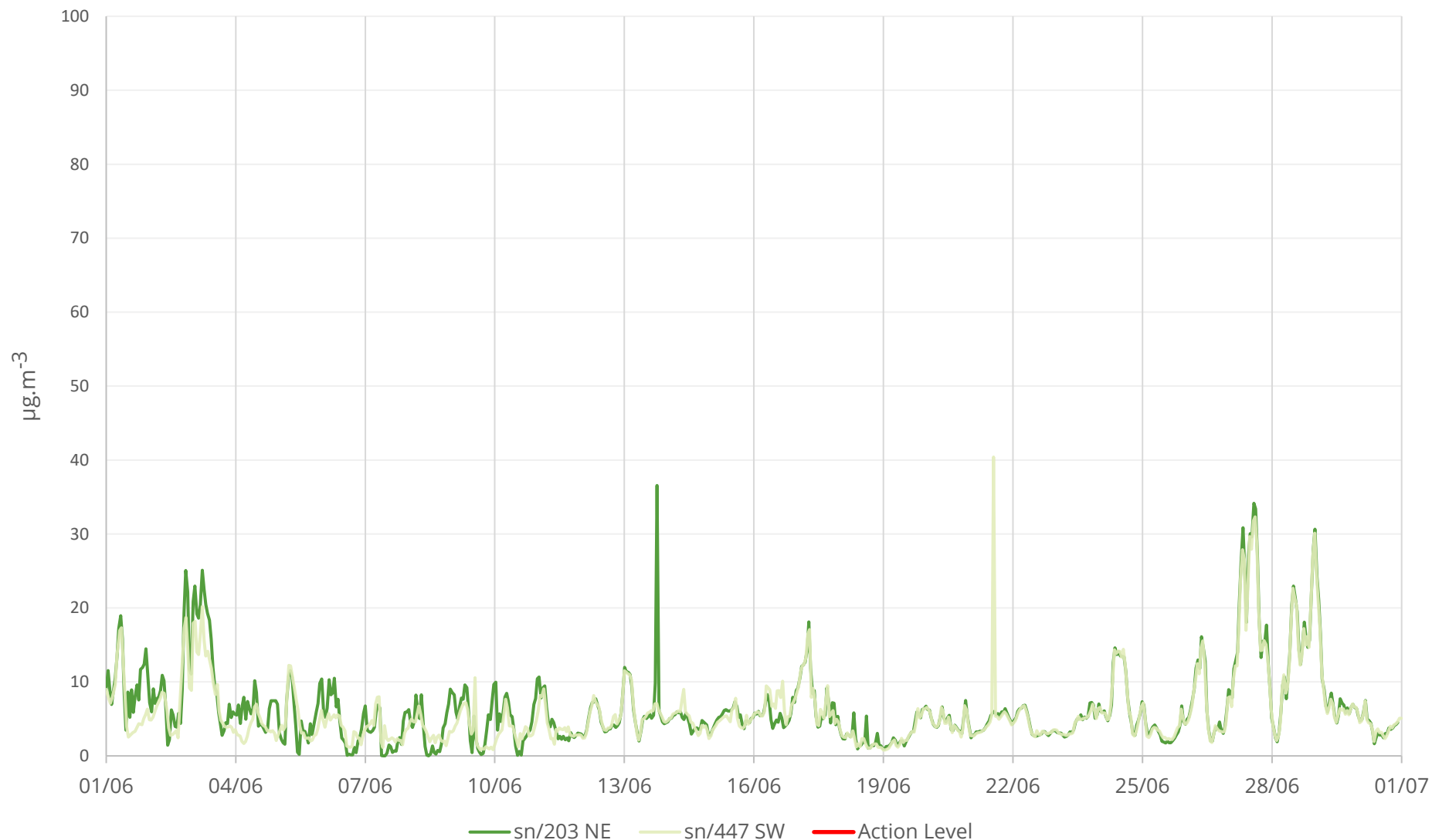
## Dust Monitoring at Highgate Newtown Community Centre (15 Minute Averages for PM<sub>10</sub>)



## Graph 2: 1-hour mean time-series



## Dust Monitoring at Highgate Newtown Community Centre (Hourly Averages for PM<sub>10</sub>)





## Phlorum Limited

### Head Office & Registered Office:

Unit 12  
Hunns Mere Way  
Woodingdean  
Brighton  
East Sussex  
BN2 6AH  
**T:** 01273 307 167

### Northern Office:

Ground Floor  
Adamson House  
Towers Business Park  
Wilmslow Road  
Didsbury  
Manchester  
M20 2YY  
**T:** 0161 955 4250

### Western Office:

One Caspian Point  
Pierhead Street  
Cardiff Bay  
Cardiff  
CF10 4DQ  
**T:** 029 2092 0820

info@phlorum.com  
**www.phlorum.com**

Registered in England & Wales. Reg No. 4967256