

**FARRANS**

A CRH COMPANY

# Construction Working Group Meeting

25 November 2020

## Construction Management Plan



 Camden

**Highgate  
Newtown  
Community  
Centre**

# AGENDA

- » Bertram Street – Challenges and Potential Solutions
- » Croftdown Road – Challenges and Potential Solutions
- » Other Items for Consideration from CMP

# HNCC SITE TEAM



**Cathal Montague**  
Regional Director



**Mel McMahon**  
Contracts Manager



**Ruairi McCormick**  
Project Manager



**Sarah Fearon**  
Community  
Engagement Officer

# BERTRAM STREET

## CHALLENGES

- » Vehicle movements down Bertram Street
- » Narrow Street
- » Stakeholder vehicles parked on both sides
- » Larger vehicles will have to reverse down and then drive out
- » Noise disruption

## POSSIBLE SOLUTIONS

- » Initially until the structures have started to rise is to implement a one way system through the site for smaller vehicles
- » Reduce the number of larger vehicles utilizing Bertram Street
- » Minimal Parking suspensions required
- » Possible use of Croftdown Road for smaller vehicles when the structures are constructed for deliveries to reduce the impact on Bertram Street
- » Additional Traffic Marshalls

# BERTRAM STREET



# CROFTDOWN ROAD

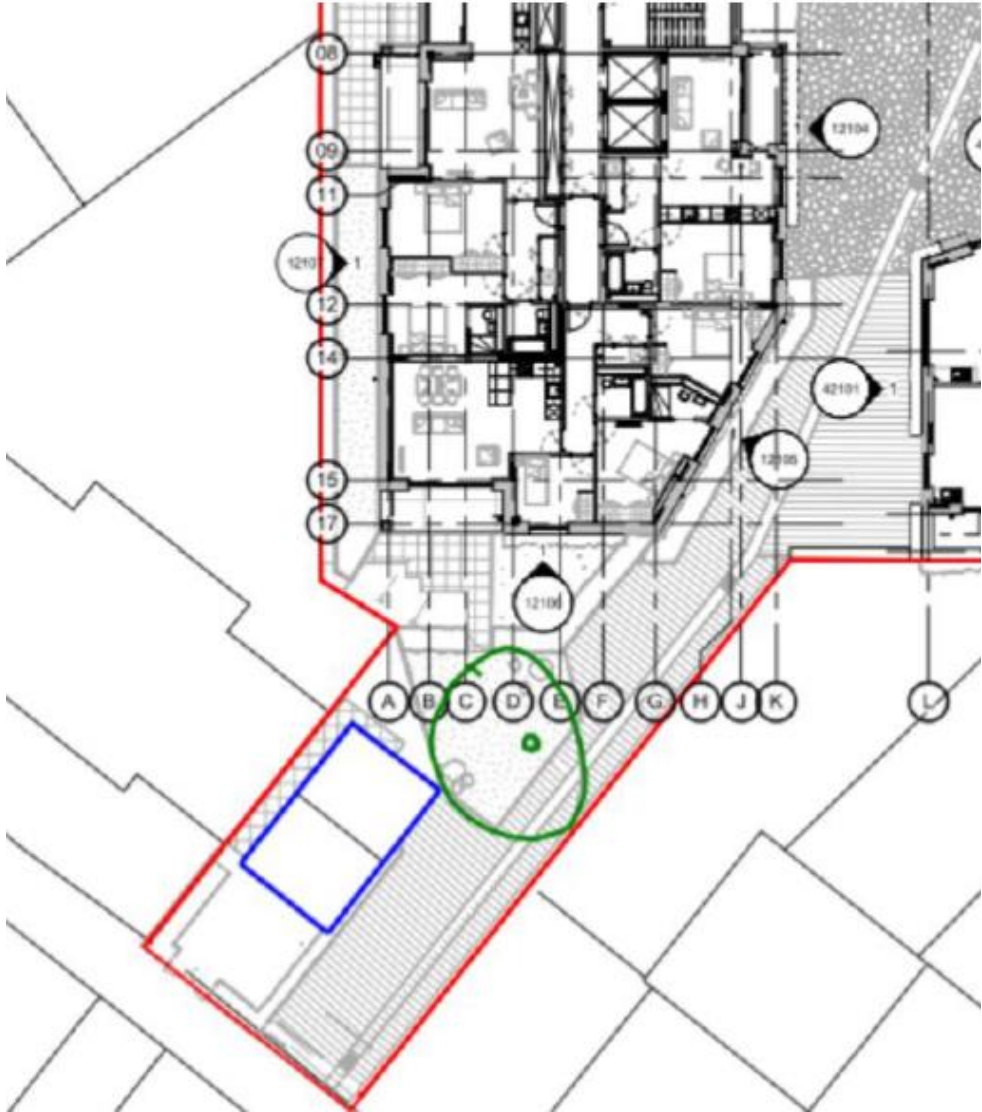
## CHALLENGES

- » Currently no direct Access onto Site
- » Location of Tree
- » Location of proposed substation
- » Larger vehicles will not be able to safely pull off site without mounting the footpath on the opposite side of the road
- » A minimum of 8 of parking spaces to be suspended for the duration of the works
- » Once the structures are in place the one way system will not be able to be fully implemented

## POSSIBLE SOLUTIONS

- » Preparation works required for access, prior to works starting on site
- » Scaffold adaptations to allow smaller vehicles to continue the one way system
- » Additional Traffic Marshalls
- » Possibility of utilizing a larger tower crane
- » Deliveries to Croftdown Road could be able to offloaded and moved by telehandler onto site thus taking vehicles off the road

# CROFTDOWN ROAD



# OTHER ITEMS FOR CONSIDERATION

## CHALLENGES

- » Excess Noise
- » Excess Dust
- » Excess Vibration

## POSSIBLE SOLUTIONS

- » Monitoring of Noise, Dust and Vibration set to British Standards
- » Site to be registered to Considerate Constructors Scheme
- » Regular Communication with Stakeholders through site notice boards, with contact details and leaflet drops
- » Social Values we intend to bring to the Project