

Highgate Newtown Regeneration Project Construction Working Group

Meeting #10 – 8th June 2022



AGENDA

- | | | |
|----|---|------------------|
| 1. | Welcome & Introductions | Luke Joyce |
| 2. | Actions and update since Previous Meeting | Luke Joyce |
| 3. | Update from Highgate Newtown Community Partners | Andrew Sanalidro |
| 4. | Works on Site | Farrans |
| 5. | Upcoming Works | Farrans |
| 6. | Programme Update | Maxime Tomas |
| 7. | Open Forum | All |
| 8. | Any Other Business | All |

Actions and update since Previous Meeting

- Transport consultant appointed for the development of a Travel Plan, Servicing Management Plan and Parking Management Plan.
- LBC officers working with Highgate Newtown Community Partners to develop a Community Facility Management Plan for the new space.
- LBC Tree Officer currently reviewing a viable option on location of the additional tree. LBC will involve Eileen on tree species, and liaise with Jane on location as agreed at previous meetings.
- LBC enforcement officers have undertaken additional visit to monitor parking issues. Farrans briefing sub-contractors.
- Meeting with Thanos on site to discuss issues and actions from previous CWG.
- Construction site visit undertaken with recently elected Highgate Ward Members.

Update from Highgate Newtown Community Partners



Welcome to
Highgate Newtown
Community Partners

30 BERTRAM STREET, LONDON N195DQ



News

Activities

Services

View All

Donate

Q

≡

Be a part of our
growing community.



Channing & HNCP

Our growing partnership with HNCP and Brookfield Nursery and Primary School has enabled us to work together to deliver a whole range of activities.

News • 11th May 2022



Positive Futures

Would you like to find work that is better paid and more secure? The positive futures project can help.

#Services



Faiths

Highgate Newtown Community Partners have benefitted enormously from working with local churches including St Anne's, St Mary's, the United Reformed Church in Pond Square and St Michael's, as well as local schools such as Brookfield Primary School and Channing School.

FARRANS
A CRH COMPANY

Project Update



Progress, lookahead and
community engagement



Works on Site

Block A

Elevation works well underway Brickwork nearing 50% completion
Internal fitout making good progress
Roofing works underway

Block B

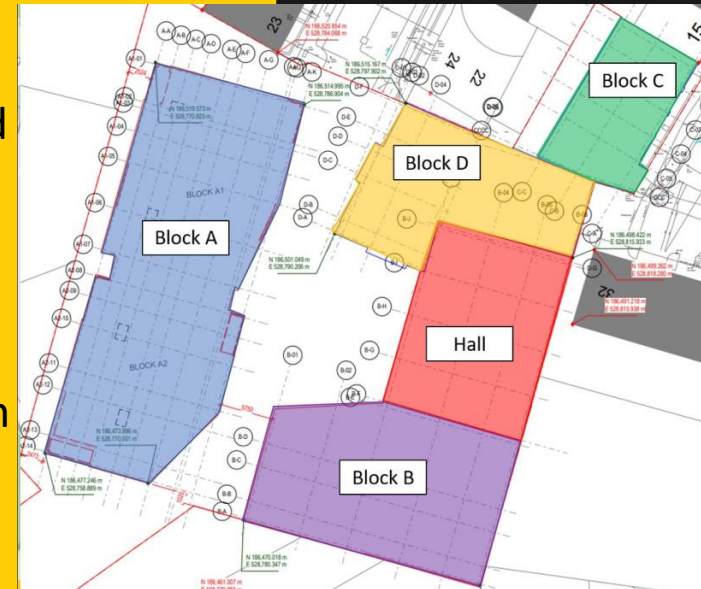
Elevation works including brickwork started
Internal fit out has just commenced

Hall & Block D

Steel frame complete
Block D making good progress – working on getting the 3rd floor slab complete
Brickwork following up behind the superstructure

Across the Site

Gas now connected into the mains
New sub station works progressing well – only roof and doors left to install





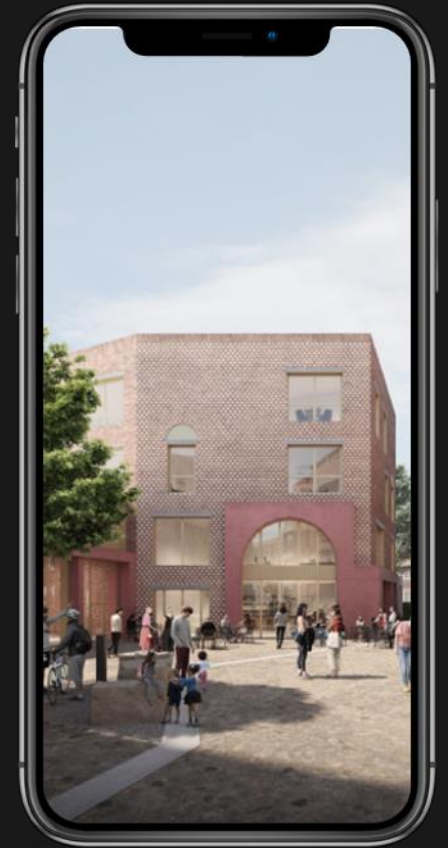
FARRANS CONSTRUCTION

Upcoming Works

- Continue elevation works to all blocks – including window and brickwork install
- Continue with the roof install across all the blocks
- Continue on with the internal fit out across all blocks – including the install of the lifts
- Complete the new substation ready for power on

Benefits

- Reduction in traffic movements as there should be less deliveries generally
- Upcoming activities on site will create less noise
- Less likely to need to extend working hours after 6pm



Social Value Targets



School/Curriculum
Based Activities /
College Site Visits

4/2

School/College
Site Workshops

9/4

Work
Experience

13/24 weeks

Apprenticeships

4/6

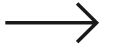
Number of Local Roles
created

11/5

Locally Procured Goods
and Services

5.2/10%

Community Engagement



- Work Experience programmed for July with young people aged 16-18
- Presentation to Careers Advisors outlining project overview & workshop opportunities
- Farrans developing a work experience day for Year 10 girls with partner schools
- Attended Sustainability Event with Camden Clean Air



WOULD YOU LIKE THE GIFT OF A TREE?

THE GREAT TREE GIVEAWAY...
GIVING A GIFT TO MAKE A DIFFERENCE



***Contact site to request
your tree gift -
Camden@farrans.com***

1

Birch

Birch hosts more than 300 insect species and the catkins provide food for birds.

2

Crab Apple

The pretty spring blossom on crab apples is great for pollinators and fruits provide food for birds.

3

Rowan

Rowan berries make excellent autumn food for birds.

The Great Tree Giveaway

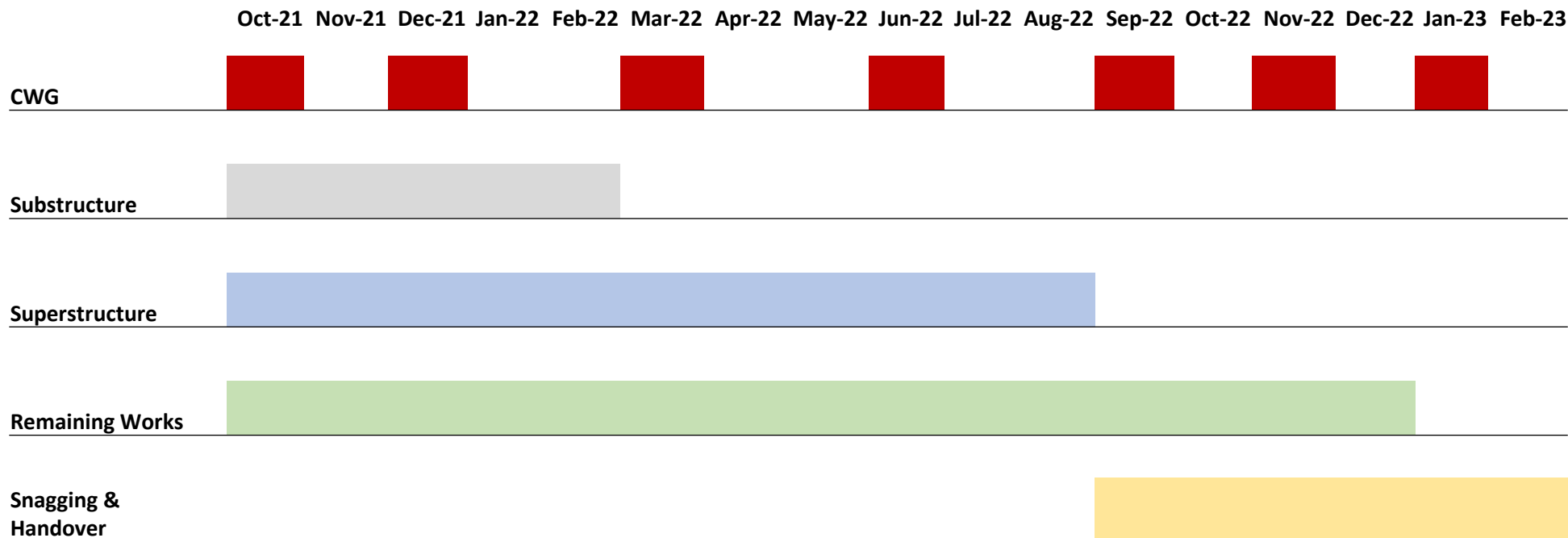
WOULD YOU LIKE THE GIFT OF A TREE?

To mark World Environment Day on 5 June we want to give a gift that will make a difference, a tree, to highlight one of our key priorities:

To invest in our planet, reduce our carbon footprint, increase biodiversity and minimise our impact on the environment.

We have selected 3 varieties of tree that best support wildlife through habitat and food; Rowan, Birch and Crab Apple.

Programme Update



Any Other Business

Upcoming Meetings TBC:

Wednesday September 2022

Wednesday November 2022

Wednesday January 2023