

# Camden **MOSAIC** Short Breaks Statement (Short Version)

This document has been developed to pick out the key elements from Camden's Short Break Statement. If you would like to read the statement in full, you can download it from our website [www.camden.gov.uk/shortbreaks](http://www.camden.gov.uk/shortbreaks) or contact the Disabled Children's Team on 020 3317 2201

## What are short breaks?

Short breaks are offered by Camden Disabled Children's Team to disabled children and young people, aged 0 to their 18<sup>th</sup> birthday, and their families. They are **fun** activities provided after-school, at the weekend and during school holidays which allow children and young people the opportunity to do something they enjoy, independently from their parents. They also give parents and carers a break from their caring role.

**Camden MOSAIC** is the integrated service for the borough's disabled children, young people and their families. It is made up of the Child Development Team (CDT), the Disabled Children's Social Care Team (DCT), Social Communication Assessment Service (SCAS), KIDS Parent Participation and the Child and Adolescent Mental Health Service (CAMHS). The Sleep Service and Feeding Clinic are new services developed in 2013 in the integrated service. All these services have been brought together at Kentish Town Health Centre.

The Disabled Children's Social Care Team is made up of Social Workers, Family Support Workers, the Short Breaks Assessor, Key Worker and the Short Breaks Co-ordinator and Outreach Worker. This team is responsible for organising and monitoring short breaks as well as other support and safeguarding services.

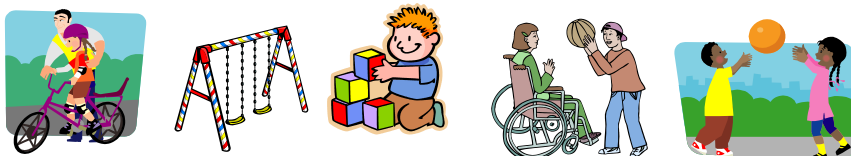


## Who can receive short breaks?

To access Camden's Local Short Breaks Offer your child will need to meet the eligibility criteria as set out below:

- Aged 0 up to their 18<sup>th</sup> birthday
- Live within the London Borough of Camden on a permanent basis
- Score either 2 moderates or 1 severe/profound on the Functional Needs Assessment (FNA).

The FNA score will be provided by a health professional who knows the needs of your child. A professional from the Disabled Children's Team can support you in understanding the FNA scores.



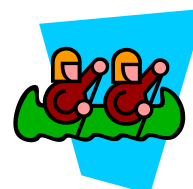
## Allocation of short breaks

We think it is important to allocate short breaks in a fair way. Some families will need more support than others. Because every child, young person and their family is different, all families are assessed individually and a care plan of short breaks is put in place to meet their needs. Short breaks are provided through 3 pathways (see page 3 for more information). Not all disabled children need to access short breaks as universal services in Camden are able to meet their needs (see pathway 1 on page 3 for more information).

**The Camden Local Short Breaks Offer** (for 5-18 year olds) is 1 activity per week term time and 2 days per week in the school holidays, or the equivalent hours in direct payments or agency support (Please see pages 4 and 5 for more information). Under 5's will be provided with a package of support based on the assessed needs of the child and family. Some families will be assessed as needing more than the local offer and will receive additional short breaks. This may be due to a number of reasons such as having more than one disabled children, having a child with complex health needs or if a parent has a disability.

## What short breaks are available?

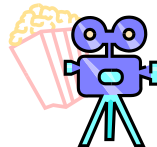
There are a range of short break services available in Camden. For a full list of what short break services are currently available in Camden please visit [www.camden.gov.uk/shortbreaks](http://www.camden.gov.uk/shortbreaks) or contact us.



## How to access short breaks?

If you would like to request short breaks then a referral form called a *Single Point of Referral (SPOR)* is needed from a professional who is working with your child such as speech and language therapist, teacher, physiotherapist etc. This will outline your child's need for short breaks. For help with this process please contact the disabled children's team (020 3317 2201) and they can assist you. A professional can request a referral form by emailing [adminspor.cnwl@nhs.net](mailto:adminspor.cnwl@nhs.net) where a link to the online form is also available.

For more information about the eligibility criteria or for a copy of the FNA, please download the full version of the Short Breaks Statement or contact us.



## Camden MOSAIC inTouch

The newsletter for disabled children, young people and their families



Camden MOSAIC



### MOSAIC inTouch newsletter

Any family in Camden can sign up to the MOSAIC inTouch newsletter, which provides information on events, activities and support groups for families with disabled children. The newsletter is produced quarterly and available in the MOSAIC reception. If you would like to receive copies of the newsletter through the post or by email then please call 020 3317 2201 for a registration form.

## What if my child has mild or moderate needs?

If your child does not meet the short breaks criteria then they can still access activities in Camden. To discuss what is available for your child then please contact the Disabled Children's Team on 020 3317 2201. The MOSAIC inTouch newsletter also has lots of information about activities which all children can access.



### MOSAIC Disability Card

If you live in Camden, your child is under 18 years old and receiving services from MOSAIC then you *may* be eligible for a disability card. This card can be used to explain to people that your child has a disability and for concessionary rates and use of facilities at attractions. For example, a carer can go free at London Zoo, London Eye, Legoland, Chessington World of Adventures and many more.

Contact the Disabled Children's Team on 020 3317 2201 to find out if you are eligible.



### Contact us:

**Short Breaks Co-ordinator and Outreach Worker**  
Camden MOSAIC

Telephone: **020 3317 2228**

Disabled Children's Team Duty Social Worker:  
**020 3317 2201 / 2221**

Website: [www.camden.gov.uk/shortbreaks](http://www.camden.gov.uk/shortbreaks)



## Camden MOSAIC Short Break Pathways

	Pathway 1 - Universal	Pathway 2 – Targeted (Camden Local offer)	Pathway 3 - Specialist
Who can access?	<p>Children and young people with a disability who require limited or no support to access an activity.</p> <p>Many organisations have received training in working with disabled children or recruit volunteers to ensure disabled children are able to attend with 1:1 support.</p>	<p>Children and young people (aged 0-18<sup>th</sup> birthday) with a severe disability or a number of moderate disabilities.</p> <p>These children would need to meet the eligibility criteria of the disabled children’s team based on the severity of their disability.</p> <p>These children <i>may</i> be non-verbal, wheelchair users or have complex medical needs.</p>	<p>Children and young people (aged 0-18<sup>th</sup> birthday) with a severe disability or a number of moderate disabilities - plus additional pressures on the family such as, more than one disabled child in the family, parent/carer with a disability, child with complex medical needs etc.</p>
What is the process?	<p>Family Information Service or MOSAIC Short Breaks Outreach Worker can signpost families to universal / mainstream services in the community.</p>	<p>Assessment by the MOSAIC Disabled Children’s Team.</p>	<p>Assessment by the MOSAIC Disabled Children’s Team.</p>
What is available?	<p>Services and activities in the community which may have a cost to be provided by the family.</p>	<p>MOSAIC Disabled Children’s Team can provide:</p> <ul style="list-style-type: none"> <li>• 1 session per week during term time (39 weeks)</li> <li>• 2 days per week in the school holidays (11 weeks – excluding Christmas holidays)</li> <li>• The above hours can be provided by an agency worker or through direct payments.</li> </ul>	<p>The Camden Local Offer will be provided plus additional short breaks such as extra sessions during term time or in the holidays.</p> <p>There will be an assessed need by a social worker to receive this extra support.</p>
Who do I contact?	<p>Call Family Information Service on 020 7974 1679, option 2 or;</p> <p>MOSAIC Short Breaks Coordinator: 020 3317 2228</p>	<p>To discuss if your child is eligible for short breaks, please call the MOSAIC Disabled Children’s Team on 020 3317 2201.</p>	<p>To discuss if your child is eligible for short breaks, please call the MOSAIC Disabled Children’s Team on 020 3317 2201.</p>

# TERM TIME (39 WEEKS)

Choose ONE of the following:

- Group activity afterschool



**Mainstream  
Play Service**

- Group activity on a Saturday



**Mainstream  
Play Service**

- Direct payments for 3-5 hours per week

**PSIC**



- Agency carer for 3-5 hours per week



# SCHOOL HOLIDAYS

(11 WEEKS)

- School holidays:**
- February Half Term (1 week)
  - Easter Holidays (2 weeks)
  - May Half Term (1 week)
  - Summer Holidays (6 weeks)
  - October Half Term (1 week)
  - Christmas Holidays NOT included

Choose ONE of the following:

- Group activity 2 days per week



- Direct payments for 10 hours per week

PSIC



- Agency carer for 10 hours per week

