

Camden Community Safety Service Review: Public consultation



By 2017/18 government funding will have been cut by almost 50%. This, coupled with changes like the increased cost of living and an ageing population, means making tough choices about funding local services. Our budget will have been reduced by nearly £78 million by 2017/18. This is on top of the £93 million we have already saved between 2011/12 and 2014/15.

The Council works with a range of agencies to reduce crime and make Camden a safer place. We currently spend £5 million each year on community safety and crime reduction services. In December 2015 our Cabinet agreed to reduce this figure by 25% as part of a package of proposals developed following consultation with residents to meet our tough financial challenge.

This reduction will mean that we cannot continue to deliver services in the same way and we need to rethink the way we provide community safety services. The changes we are proposing to our Community Safety Service are based on the priorities set out in the Camden Plan, ensuring Camden is a safe place for everyone. The proposals aim to make sure that the services we provide are focused on those most in need.

We are asking for your views on how we are proposing to deliver services in the future.

What are we consulting on?

We are proposing to prioritise the use of these reduced resources on areas where we can make the greatest difference, by providing support and interventions for those who are most vulnerable and at the highest risk of harm in our communities. This will mean the Council's Community Safety Service will assess all requests for advice, support and action, and will prioritise issues where there is a risk of harm to individuals.

We will of course continue to work closely with our community partners to offer support to people in cases where we will not be able to act directly. This might be through links to schemes such as Neighbourhood Watch, housing management resources or locally based community services and by working with partners to develop these.

Our partnership work with the Metropolitan Police will continue to ensure the safety of our communities across the borough. The police will continue to provide patrolling and neighbourhood services to respond to issues raised by local communities. We will encourage residents to seek support from the police regarding crime and community safety issues.

We are proposing these changes because we want to make sure that our available funding continues to have a positive impact for the most vulnerable people in our community.



What services are we proposing to prioritise?

Cabinet members have decided to invest more money in services to tackle **domestic violence and abuse**. One in four women and one in six men in the borough will be subject to domestic violence and abuse in their lifetime, many of whom will be at risk of murder by a partner or family member. Supporting victims of domestic abuse is one of our key priorities and we believe that there is more we can do to ensure victims' safety. We will invest more in these services to ensure the safety of Camden residents.

Cabinet members have decided to protect the money we spend on tackling the inequality of rough sleeping in the borough. Increasing numbers of **rough sleepers** are based in Camden and in the last year alone there was a 12% increase in rough sleeping. The Council remains committed to investing in the specialist outreach Safer Streets Team in order to provide services for vulnerable individuals engaged in high risk street activity, including rough sleeping, begging, sex working and street drinking and to reduce the impact of street activity on our local communities and businesses.

What are we proposing to change?

- We think that there is more that we can do to join up council services and work with other organisations, like the police and community centres, to improve the level of service that customers receive. This would mean that we would also be able to point people in the direction of other local services available.
- We have assessed the community safety needs of vulnerable people and have identified ways in which services can be reorganised so they are more efficient. Consideration has also been given to the services that will continue to be provided by the police and other organisations, and in some cases where additional support can be provided to reduce the impact of the Council's changes.
- We are proposing to focus our Community Safety Service on incidents of antisocial behaviour, youth violence and youth disorder that cause a high-risk of harm to individuals. This would ensure that interventions we offer have the greatest impact. This would mean we would no longer directly intervene in cases of antisocial behaviour, youth violence and youth disorder where there are lower levels of risk.
- Direct work to reduce reoffending with perpetrators of some types of crime will stop. Other agencies will continue to provide support to offenders and our Community Safety Service will assist with this where the offending poses a risk of harm to identified victims.
- The Council is proposing to retain the current CCTV and Housing Patrol Service on housing estates. The Community Safety Service will continue to provide services in our communities, but we are proposing to make changes to the current Community Warden and Parks Patrol services.
- For cases where we can no longer respond directly, we will help the community to work together to find their own solutions and interventions for those issues where there is lower risk of harm to individuals.
- We currently fund services to manage the impact of the night time economy on local communities, including the provision of additional police officers. We are proposing to reduce this funding.

Where services would no longer be available, communities will be given advice and information about other agencies that can offer support, as well as steps that they might be able to take with others in their communities that could address problems.

Have your say

We want your views on our proposed plans to change our Community Safety Service. We will use your responses to inform the changes we make.

As well as responding to this survey, there are other ways you can have your say. We are planning to contact community groups as part of the consultation to encourage responses from people who may not have access to an online survey.

Please telephone the **Community Safety Service** on **020 7974 2915** or email **communitysafety@camden.gov.uk** if you would like to discuss the consultation further, especially if you have ideas about other people we should contact specifically in regards to responding to the consultation.

Council staff will be consulted on changes to job roles after the responses to this consultation have been considered.

Please answer the consultation questions in this document to give your views on our proposals.

The consultation on proposed community safety changes will run for eight weeks and closes at 5pm on Tuesday 12 July 2016.

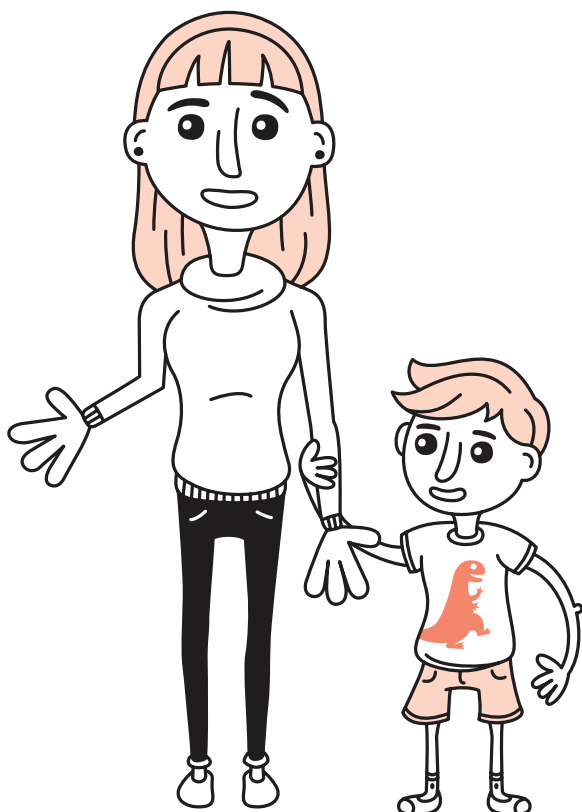
If you are filling in a paper copy of this questionnaire, please send your response to the freepost address below:

Strategy and Change

Floor 5, 5PS
Freepost RSLT-RJBR-TXAA
London Borough of Camden
Town Hall
London
WC1H 9JE

Alternatively you can complete the form online at **www.camden.gov.uk/communitysafetyreview**

If you would like an easy-read or large print version of this document, or need it to be translated into another language, please call **020 7974 2915**.



Question 1

We know that community safety is a key concern for the public. In order to focus our resources on the most vulnerable and at highest risk in the community, we will have to change the way we provide our services. We are proposing the changes outlined below:

Continued or additional investment

- Delivery of support services to support victims of domestic violence and abuse and sexual violence.
- Delivery of outreach service for rough sleepers, beggars, street drinkers and sex workers.
- Delivery of Housing Patrol and CCTV services.

Funding reductions

- Response to antisocial behaviour, including youth violence and youth disorder.
- Delivery of some patrol services, such as Community Wardens and Parks Patrol.
- Delivery of support services to offenders to reduce reoffending.
- Delivery of night time economy services dealing with disturbance issues, i.e. pubs and clubs.

Do you agree?

Do you disagree?

Do you have any other comments or ideas about how we should prioritise our reduced resources?

Question 2

People experiencing domestic violence and abuse face significant levels of risk with two women being killed by their partner every week in the UK. In the last 12 months in Camden, over 3,500 cases were referred to us via the Camden Safety Net. 198 of these were classified as high-risk and required immediate intervention to stop people sustaining serious injury and to reduce the risk of residents being murdered by a partner or family member. We know that one in four women and one in six men experience domestic violence and abuse in their lifetime.

We are therefore proposing to increase our investment in services by £300,000 a year to tackle domestic violence and sexual abuse in the borough and provide support to victims. This means that we will have less money to invest in tackling other crime and community safety concerns that involve less serious levels of risk.

Do you agree?

Do you disagree?

Do you have any other comments on how else we can tackle the issue of domestic violence and abuse in Camden?

Question 3

We know that the services we provide to tackle antisocial behaviour, youth violence and youth disorder are important to our communities. With a reduced budget, we are proposing to change the way we deliver some of these services.

We would focus our resources on providing support to people who experience significant risk of harm that may be related to issues such as hate crime or harassment for example. The issues we would consider when assessing levels of risk for victims and perpetrators include:

- The repeated frequency of problems.
- Whether there are children, adults with a disability or elderly residents living in the household.
- If physical harm or threats have occurred.
- If the issue is related to any of the following:
 - Faith/race/ethnicity
 - Gender
 - Sexuality
 - Age
 - Disability – learning or physical
 - Health – physical or mental
 - Sexual exploitation

- Vulnerability related to support needs (such as substance misuse), or a recent event impacting someone's life: i.e. bereavement.
- Amount of support available from family, friends and other organisations.
- Vulnerability caused by issues relating to all forms of extremism.
- Vulnerability caused by issues relating to youth violence and gang activity.

Do you think that there are any other areas of risk that we should take into account when assessing victims and perpetrators of antisocial behaviour?

Question 4

The proposed changes will mean that some residents who raise concerns about antisocial behaviour, youth violence and youth disorder will no longer get direct support to tackle these issues from the Community Safety Service. We will assess the level of risk for issues raised and consider if further action is required.

When the Community Safety Service cannot take direct interventions, residents will be given advice and information about other agencies that can offer support, such as Neighbourhood Watch schemes or local community groups, as well as steps that they might be able to take with others in their communities that could address the problems. This approach will reduce costs by £400,000 each year that can be spent supporting our most vulnerable residents.

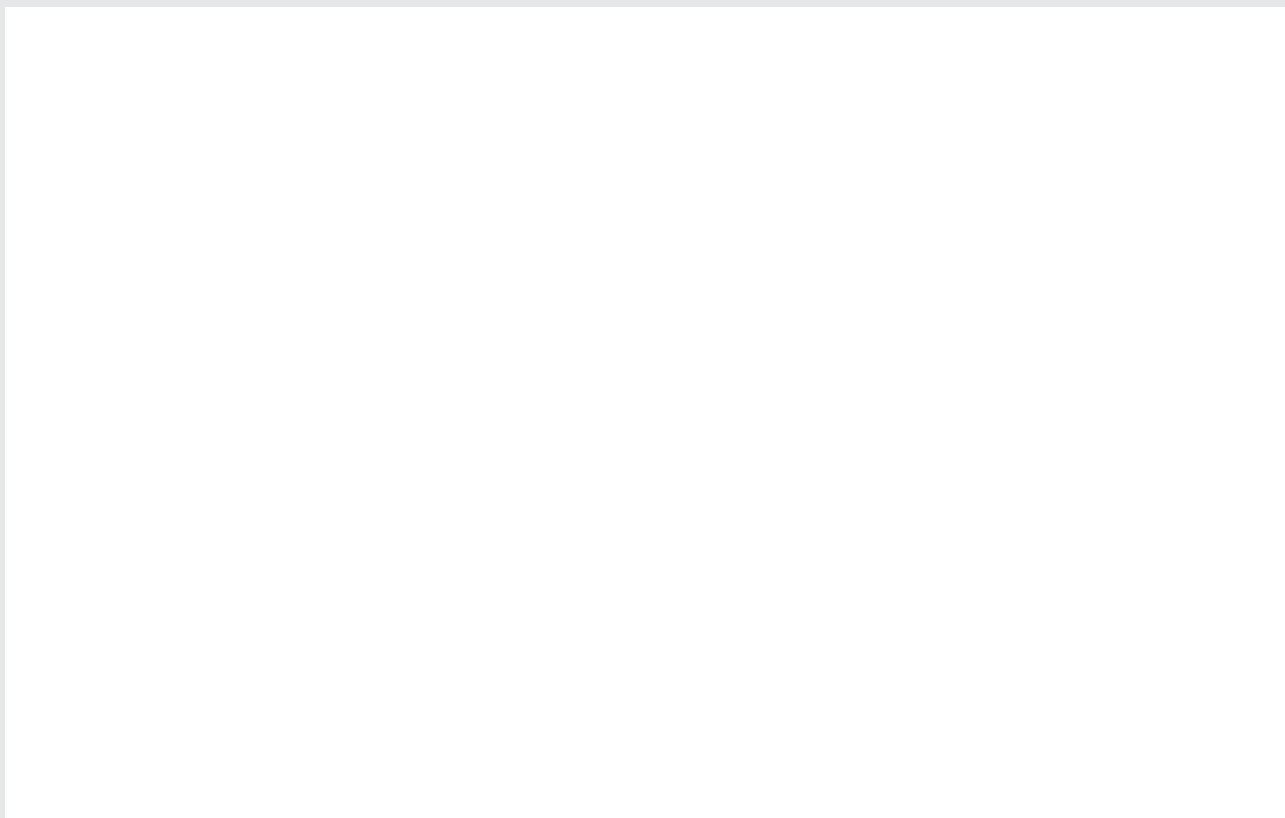
Are there local resources in your area that you think may be able to support communities in responding to concerns of antisocial behaviour, youth violence and youth disorder?

Yes (if so specify)

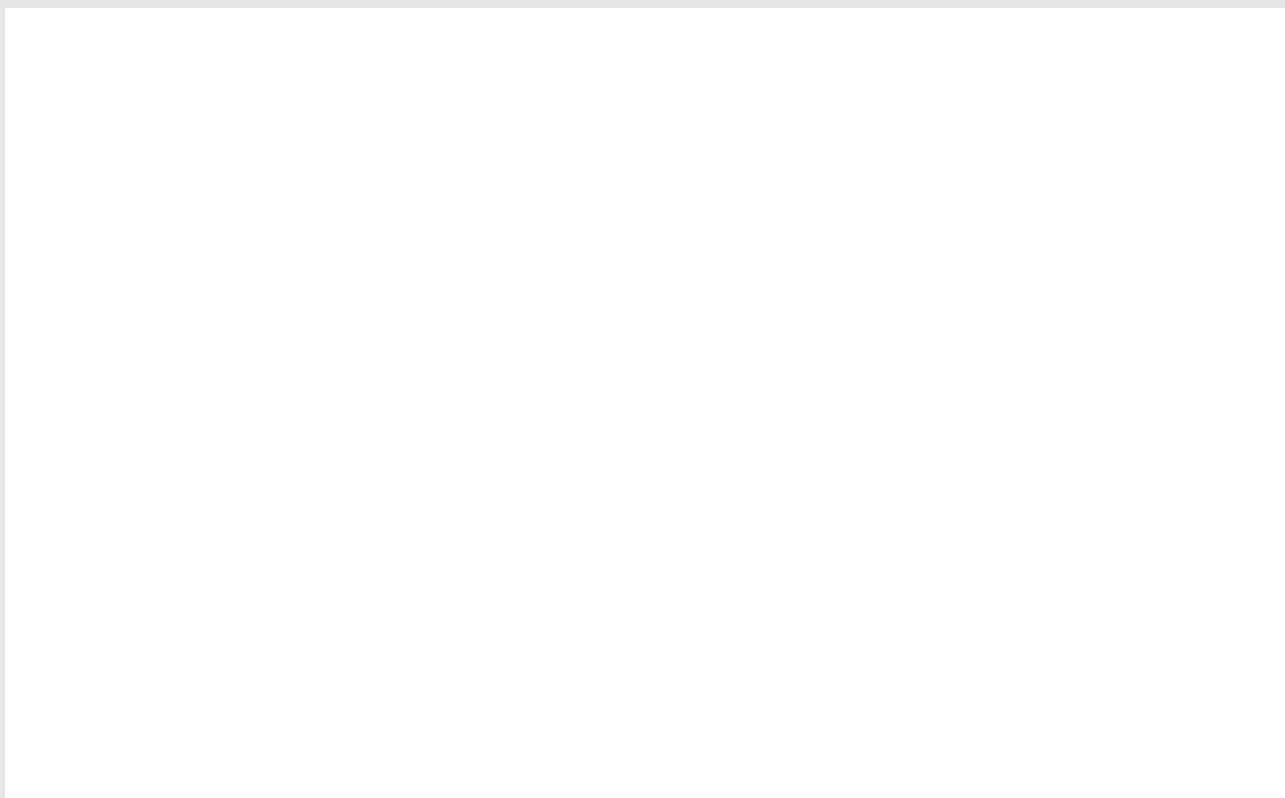
No

Do you have any other comments?

What other types of support do you think communities need to address low risk antisocial behaviour, youth violence and youth disorder issues?



Do you have any comments or ideas around how we should prioritise the resources we use to reduce antisocial behaviour, youth violence and youth disorder?



Patrolling services

We currently provide a number of uniformed patrol and CCTV services. We know that people value these for the community reassurance they provide. Patrol provision is expensive and we will not be able to continue to provide all the services that we do currently. The following questions ask for your views on how best these changes can be made.

Question 5

Tackling antisocial behaviour on the Council's housing estates is a key priority and it is funded directly by tenants and leaseholders. We will therefore maintain the current Housing Patrol and CCTV services on our housing estates.

Do you agree?

Do you disagree?

Do you have any other comments or ideas around how our resources should be used to tackle this issue?

Question 6

In the last five years incidents of rough sleeping in the borough have doubled, from 236 in 2010 to 598 in 2015, including an increase of 12% in 2015. By intervening early and offering appropriate services we can prevent long term rough sleeping, help those most in need and build a safe and clean environment for Camden residents.

Currently 73% of new rough sleepers contacted by Camden based services did not spend a second night out on the streets. Rough sleepers are among the most vulnerable in society and can present complex and high risk issues requiring specialist service interventions, some of which address mental illness and addiction. By tackling these issues early we can prevent further problems within the community such as antisocial behaviour. We are therefore proposing to retain our investment in our specialist outreach services. This investment will cost £900,000 each year. This means we will have less money available to tackle other crime and community safety concerns.

Do you agree?

Do you disagree?

Do you have any other comments or ideas around how our resources should be used to tackle this issue?

Question 7

We know that all the patrolling services we currently provide are important but the Community Safety Service cannot afford to continue to fund all of our existing services in the same way. Patrolling services by the police will continue.

Changes will need to be made to services such as Community Wardens and Parks Patrol. Options for how these changes could be made are set out below;

Option 1: Stop the current Community Warden and Parks Patrol services completely. This would allow us to focus all of our available resources on assessing and allocating interventions to individuals who are at high-risk of harm from antisocial behaviour.

Option 2: Creating a team that provides both a visible presence and direct interventions to individuals who are at high-risk of harm from antisocial behaviour by combining the current Community Warden and Antisocial Behaviour Officer roles.

Option 3: Continue with reduced Community Warden and Parks Patrol services covering a smaller number of areas in the borough, responding to fewer incidents based on levels of risk. This option would mean there are fewer officers to provide direct interventions to individuals who are at high-risk of harm from antisocial behaviour.

Please tell us any other ways you think reduced resources could be best used in terms of providing patrolling services.

How we change the way we provide this service is difficult and challenging. Changing this approach will reduce costs by £500,000 each year.

To assist our thinking, please indicate which aspects of the Community Safety Service patrolling services are most important to you (please tick up to three):

- A recognisable, regular and visible street presence in your local area.
- A service that responds to community concerns in an area when needed.
- A service that makes vulnerable people safer.
- A service that engages with community members and helps solve conflicts.
- A service that takes enforcement action in response to antisocial behaviour.
- A service that provides a community-based point of contact to report local issues to.
- Other (please specify)

Question 8

We are proposing to change the way the Community Safety Service provides support to people who reoffend by only taking direct action in cases where the offences pose a significant risk of harm to vulnerable individuals, for example where a victim is repeatedly targeted. This will mean stopping our current interventions with offenders who commit high volume crimes that have a low risk of harm, particularly offences against property such as theft or burglary. Support will continue to be provided in all cases by the probation service and the police.

Support and interventions, such as education and training, will continue to be provided to all offenders through supplementary council services and other agencies.

This approach will reduce costs by £300,000 each year.

Do you agree?

Do you disagree?

Do you have any other comments or ideas around how we should prioritise our resources for offenders?

Question 9

Currently the Community Safety Service funds a variety of interventions to address disruption and behaviours associated with what is known as the night time economy. For example, this might include issues around disturbance caused by people leaving pubs and clubs late at night. The current investment includes paying for additional police resources.

The types of antisocial behaviour related to the night time economy, such as public urination, pose a lower risk of harm to communities. So we are proposing to reduce this funding, meaning there will be fewer additional resources for the police. We will retain an approach that helps to make sure venues comply with our licensing standards in regards to behaviour, such as noise disturbance and security activities. We are also exploring new initiatives that will support the way we tackle these issues, such the use of Public Space Protection Orders to tackle public urination. This approach will reduce costs by £400,000 each year.

Do you agree?

Do you disagree?

Do you have any other comments or ideas around how resources could be used to tackle issues around the night time economy?

Question 10

All of these proposals will result in changes to how we deliver community safety and crime reduction services.

What issues could impact the community because of the proposed changes that we need to consider when implementing the changes?

Question 11

Are there any other comments that you would like to make about our proposed approach? Or do you have any alternative ideas for how we can make savings?

Section three

About you

In Camden, we want to make our services better for all residents and visitors to the borough – to help us do this we would be grateful if you could provide us with the following information.

We don't look at information on individual people, but gathering this information helps us better understand our residents and how we can meet your needs. We keep information safely and comply with the Data Protection Act. You do not need to complete some or all of the questions if you feel uncomfortable doing so.

Are you responding to this survey as a:

- Member of Camden staff
- Parent/Carer
- Partner of Camden Council
- Resident
- Voluntary or community sector organisation
- Young Person
- Other

Other please specify

We would be grateful if you could provide us with your postcode. We will only use it to analyse the responses to this survey and will not use it for any other purposes.

What is your gender?

- Male
- Female
- Other
- Prefer not to say

What is your age?

- 0 to 15
- 16 to 24
- 25 to 34
- 35 to 44
- 45 to 54
- 55 to 64

- 65 to 74
- 75 to 84
- 85 or over
- Prefer not to say

What is your ethnic group?

Please tick one of the following options:

- White English/Welsh/Scottish/Northern Irish/British
- Irish Gypsy or Irish Traveller
- Any other White background

Other please specify

- White and Black Caribbean
- White and Black African
- White and Asian
- Any other mixed/multiple ethnic groups

Other please specify

- Caribbean
- African
- Any other Black/African/Caribbean background

Other please specify

- Indian
- Pakistani
- Bangladeshi
- Chinese
- Any other Asian background

Other please specify

- Arab
- Any other ethnic group

Other please specify

- Prefer not to say

What is your sexuality?

- Gay
- Heterosexual/straight
- Lesbian
- Bi-sexual
- Prefer not to say

What is your religion and/or belief?

- Buddhist
- Christian
- Hindu
- Muslim
- Sikh
- Jewish
- No religion/belief
- Other

Other please specify

- Prefer not to say

Do you consider yourself to have a disability?

- Yes No **(Please write in box)**

(i.e. that you have a physical or mental impairment and has a substantial and long-term adverse effect on your ability to carry out normal day-to-day tasks.)

Where did you hear about this consultation?

- Camden magazine
- Camden Council website
- Camden Council social media
- Other social media
- Community Researchers
- Community Safety staff
- Community partners
- Community centre
- Library
- Local press
- Other

Other please specify

