

BLOCKS B AND C



Block B elevation looking West - Orde Hall Street



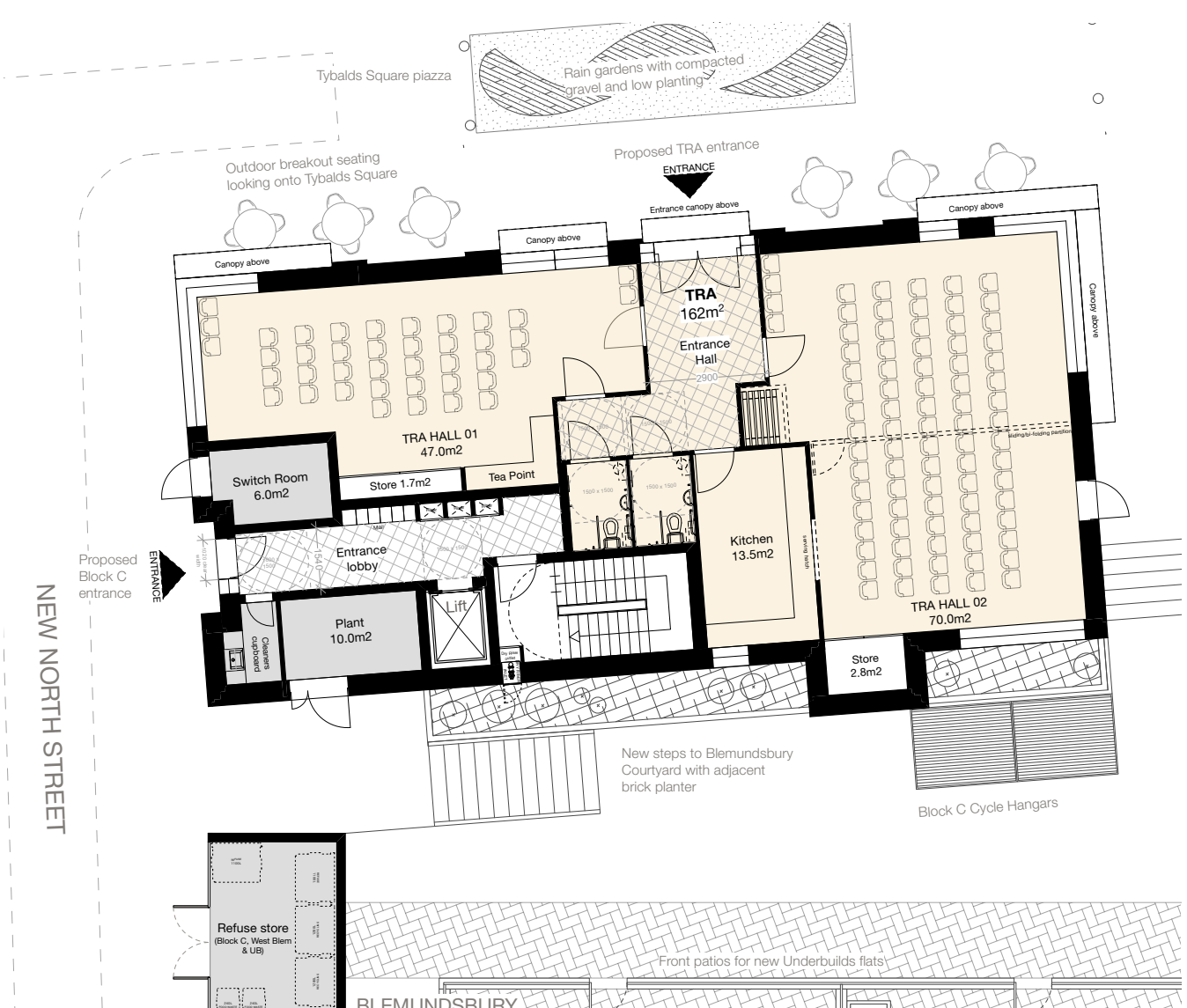
Block B elevation looking East - Blemundsbury Courtyard



Block B elevation looking North - Dombey Street

BLOCK C - 6 NEW HOMES & NEW TRA HALL

- Delivering 6 social rented housing units
- Ground + 3 storeys
- 3x 2Beds and 3x 3Beds



Block C Proposed Ground Floor - TRA hall



Block C Proposed First-Third Floor



Indicative 3D rendering of Block C and Tybalds Square



Block C elevation looking West - Blemundsbury Courtyard



Block C elevation looking East - New North Street

BLOCK C:

- Positioned parallel to Tybalds Square for strong connection
- Opens up Blemundsbury Courtyard with no overlooking issues



Block C elevation looking North - Blemundsbury Courtyard

Entrance to new units on New North Street, activating less-used routes