

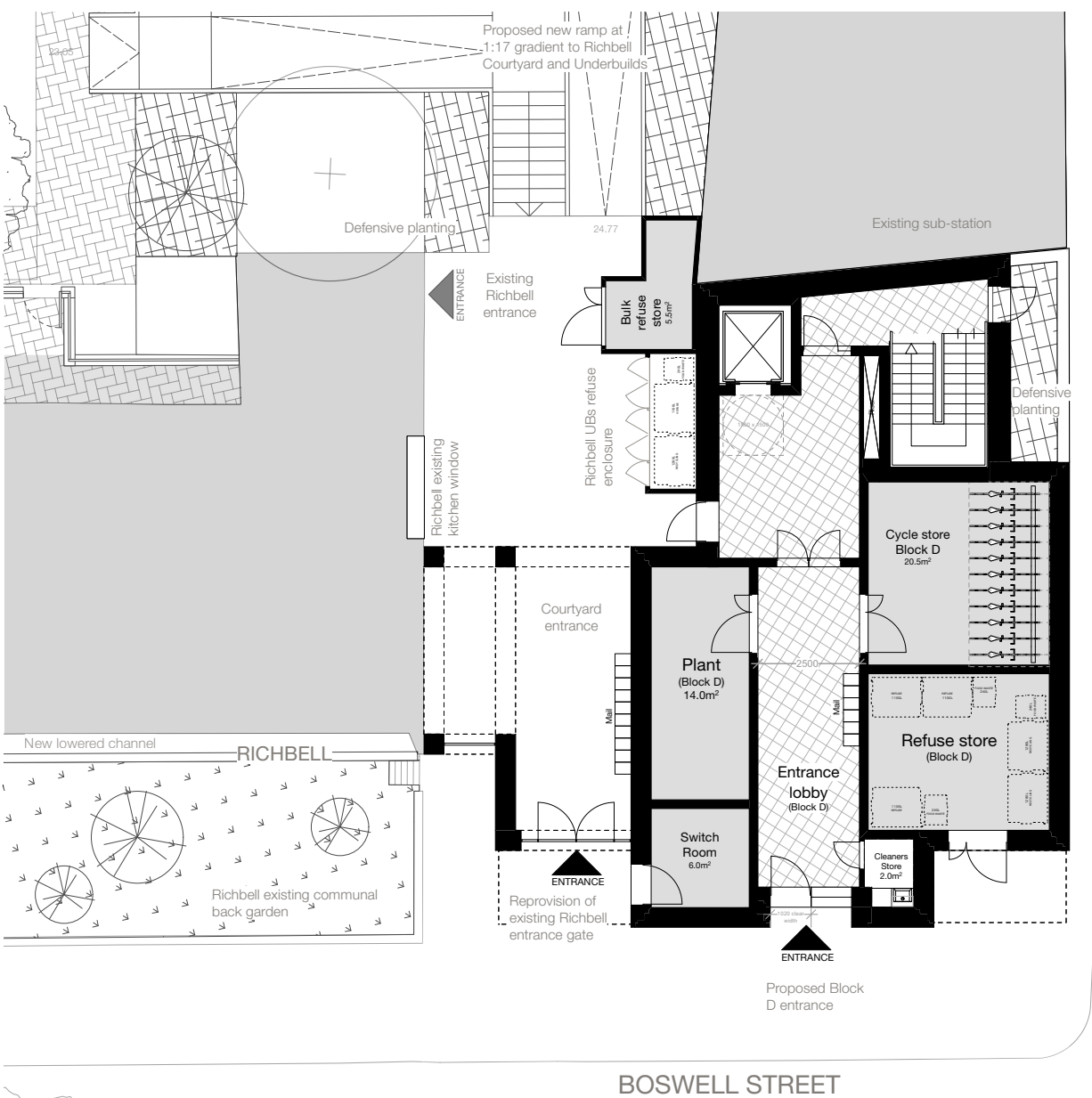
BLOCK D



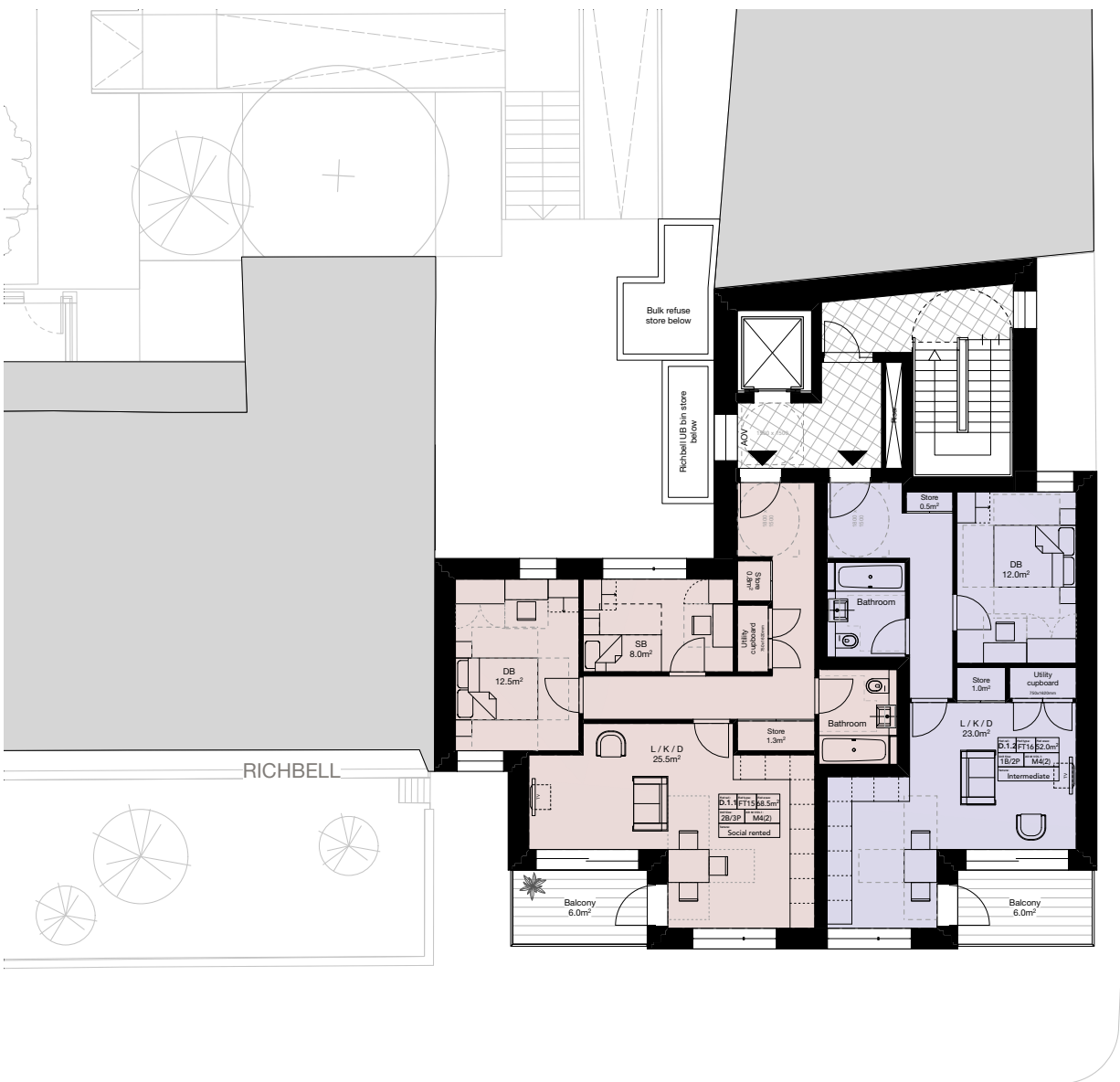
Block D elevation looking East

BLOCK D - 12 NEW HOMES

- Delivering 12 social/affordable housing units
- Ground + 6 storeys
- 5x 2Beds and 7x 1Beds;



Block D Proposed Ground Floor



Block D Proposed First-Fifth Floor



Indicative 3D rendering of Block D from Boswell Street

MATERIAL BOARD



Proposed light buff brick mix



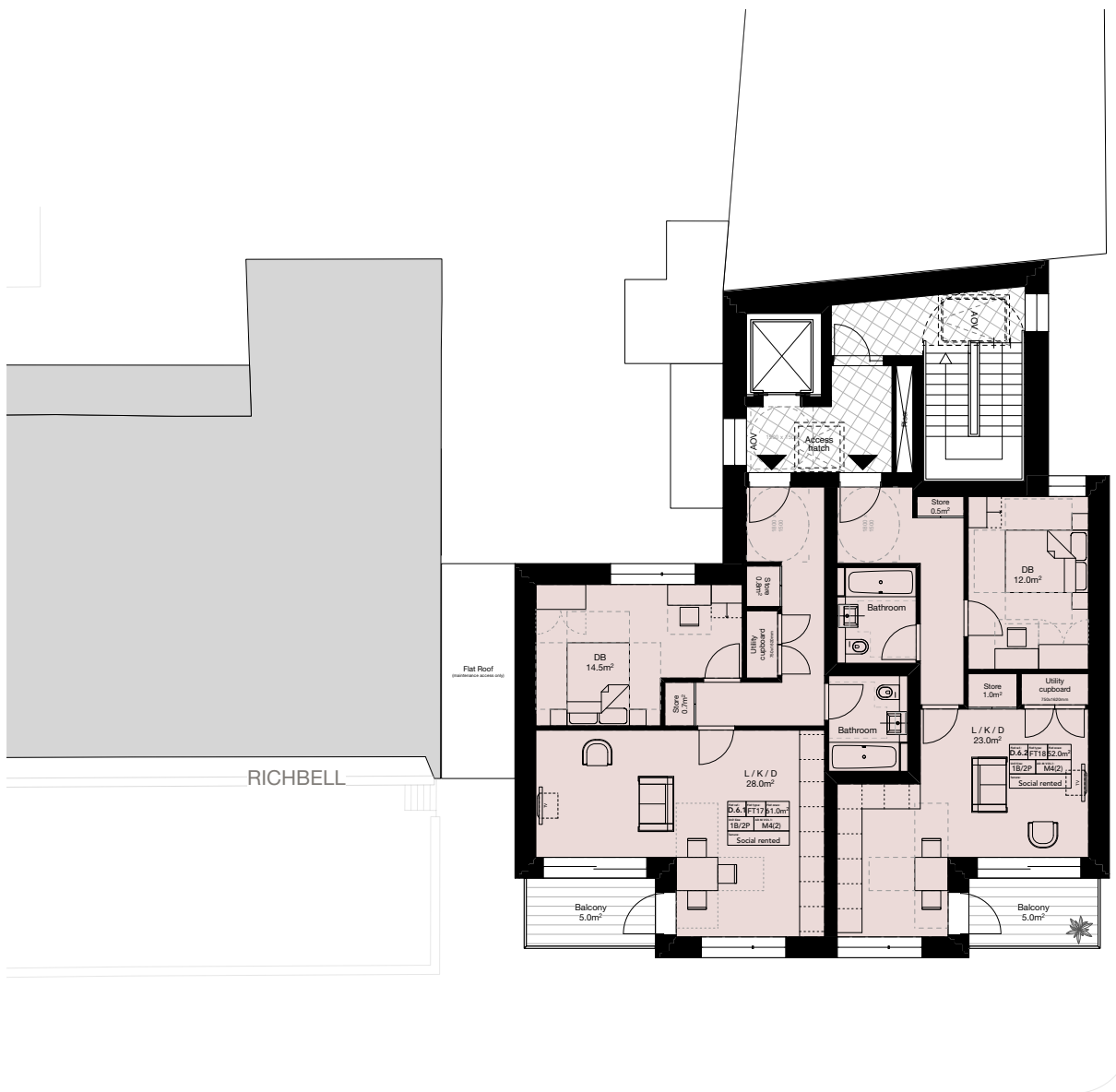
Proposed metalwork colour



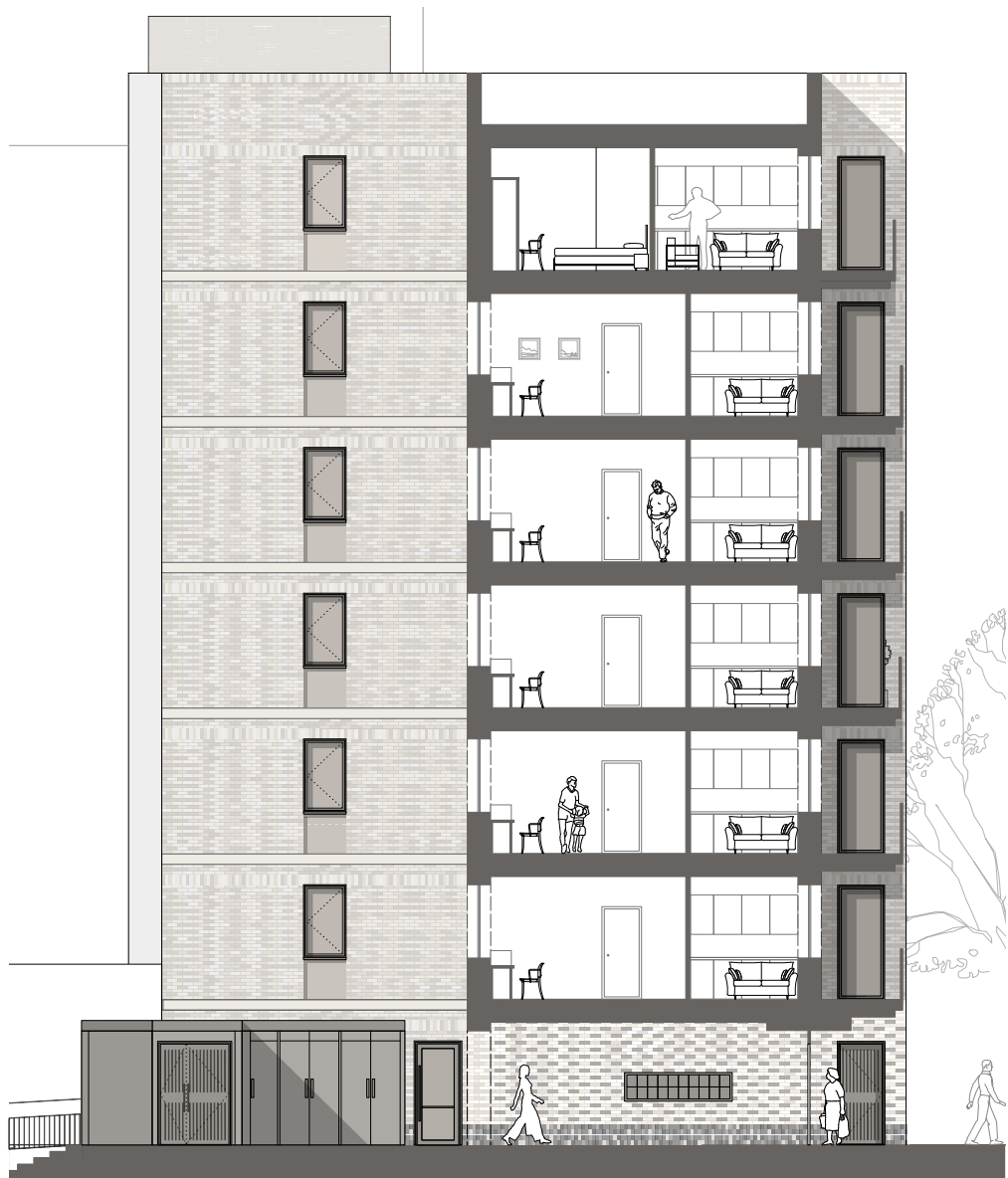
Proposed white glazed brick



Proposed grey buff brick for window panels



Block D Proposed Sixth Floor



Block D Proposed Section looking South