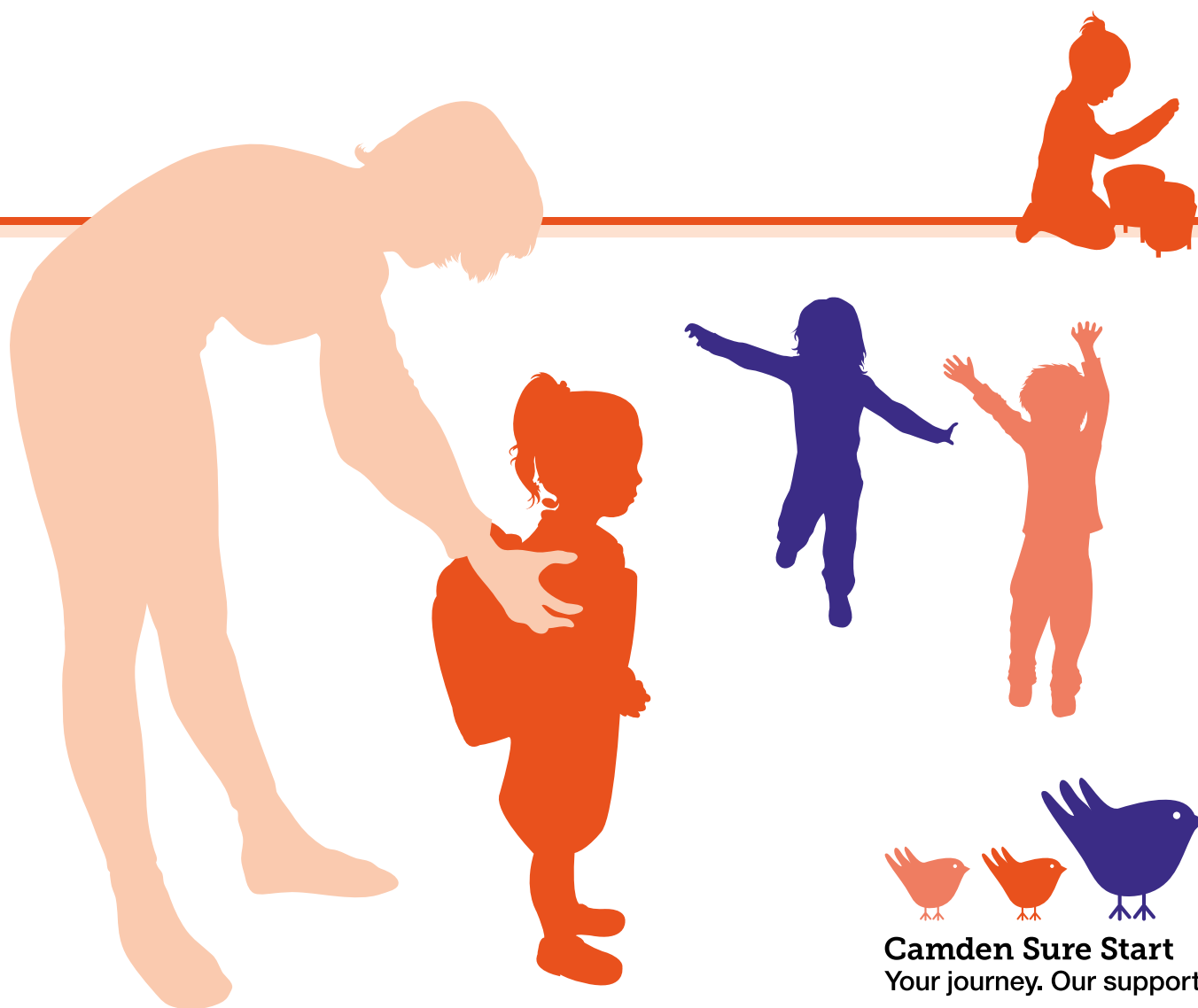


Our new approach to delivering quality support and training services



Camden Sure Start
Your journey. Our support.

Our new approach to delivering quality support and training services

Introduction

Camden has worked successfully in partnership with early years providers in the voluntary, community and private sector for many years.

Membership of the partnership has until now been free and based on an agreement to work together, access training and share good practice. Camden's quality support and training team have provided a comprehensive range of visits, improvement advice, inspection support and training, all fully funded and free at the point of delivery for providers. The outcomes achieved through this approach have been excellent with, at the time of writing, 99% of group-based providers and 97% of childminders currently judged as 'good' or 'outstanding' by Ofsted.

However, the introduction in April 2017 of a new national funding formula for the early years Dedicated Schools Grant (DSG) means a change of approach is needed. The new formula:

- requires local authorities to 'pass through' a higher percentage of DSG income to providers than previously, and
- sets limits on the amount of funding Camden Council can retain to fund services such as quality support and training.

The positive side of this is that, while the Council will have less money to fund support services, early years providers in Camden will receive a higher hourly rate for their funded children.



As a result of these national funding formula changes the Council will no longer be able to afford to provide all quality support and training services free at the point of delivery. We will need to ask providers to invest some of their higher hourly rate to sustain the provision of high quality training and support.

We know the financial situation facing many private, voluntary and independent providers is challenging and we are committed to working in partnership to maintain the high quality of all local provision.

To do this we proposing to establish a new Quality Improvement Partnership.

To become a member of the partnership providers must agree to:

- provide excellent early years education and childcare for every child
- deliver inclusive practice, ensuring that all children have the opportunity to succeed and no child gets left behind
- give due regard to the provider agreement for the provision of Free Early Education Entitlement
- inform the named adviser if the setting has to notify Ofsted of any issues
- attend termly briefings
- accommodate advisory visits
- implement any agreed action plan following inspection or adviser visits
- maintain an appropriately trained and qualified workforce.

Membership of Camden's Quality Improvement Partnership

Camden has enjoyed a strong relationship with early years providers, which has helped a very high percentage of settings to be judged 'good' or 'outstanding' by Ofsted. The Council is determined to maintain the high standards of early education that young children receive in the borough and we will work hard to sustain our relationship with all providers.

In order to maintain our strong and equitable relationship, 'core' advice and support services will remain free for all members of the new Quality Improvement Partnership. However, because of the financial constraints of the new national funding formula, we will have to charge for training sessions and any additional bespoke advice and support services over and above the core offer.

Providers will be encouraged to subscribe to Camden's comprehensive training and additional bespoke support offer through a subscription to the new Quality Improvement Partnership as 'Enhanced Members'. Enhanced Members will, for a subscription fee, be able to access a set number of training and additional bespoke quality support opportunities free at the point of delivery.

It will also be possible for providers to buy additional support above that available for the subscription fee. Subscriptions to the partnership and the ad hoc purchase of additional training and support sessions will be managed by Camden's Integrated Early Years Service, in partnership with Camden Learning. Camden Learning is a not-for-profit schools company set up by the Council and all Camden state schools. In a similar way as we do for schools, we will use 'learning blocks' as the 'currency' for buying sessions (see below).

Learning blocks

To make administration easier for us all, the Quality Improvement Partnership will use 'learning blocks' as currency. Enhanced Members of the Quality Improvement Partnership will receive 20 learning blocks for their subscription fee to buy training sessions or additional advice and support services (over and above the free core offer).

We would like as many providers as possible to join the partnership as Enhanced Members so we are allocating learning blocks to Enhanced Members at a reduced price, 20% lower than the ad hoc purchase price.

Providers who choose not to subscribe as Enhanced Members will be able to purchase learning blocks on an ad hoc basis at the rate shown below. Enhanced Members will also be able to purchase additional learning blocks on an ad hoc basis at the rate shown.

Due to the borough’s diverse range of providers, we propose to price learning blocks differently for childminders and small* and large providers - see table 1 below.

Table 1 - Subscription charges

	Enhanced Member annual subscription price	Learning blocks (ad hoc purchase price)
Small provider*	£960	£60
Large provider	£1,280	£80
Childminder	£320	£20

*Small providers will be those who have fewer than 48 children on roll.

Supporting quality for all

As stated above, Camden Council values the high quality of early education that children enjoy in the borough and has prioritised continuing free core advice and support across the early years sector. All members of the partnership will therefore receive a comprehensive core offer of free advice and support from our team of skilled and experienced advisers. Table 2, opposite, shows a range of fully-funded activities that all providers will receive.

We also know from the high participation levels and positive feedback that providers have valued the high quality training we have provided. We will continue to offer a training programme tailored to meet the needs of local providers and we hope that all Camden settings will subscribe to the partnership as Enhanced Members for the fee shown above and so continue to access training provided by the Council.

The training sessions will be priced in learning blocks with each learning block paying for, in most cases, a half-day’s training. Therefore, Enhanced Members, who receive 20 learning blocks for their subscription fee, will have ‘pre-paid’ for 10 days of training. The number of learning blocks payable for bespoke support such as mock Ofsted inspections will be negotiated on a ‘case by case’ basis, depending on the costs of providing these.

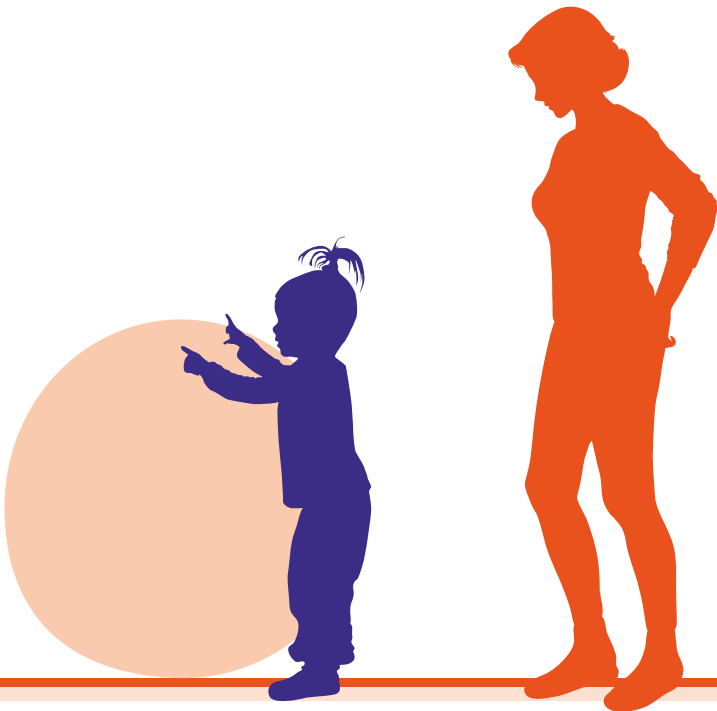


Table 2 – Services available to all members of Camden’s new Quality Improvement Partnership

The quality support offer available to all members of Camden’s Quality Improvement Partnership
Named adviser for all settings
Access to duty advice line (times to be confirmed)
One annual ‘standards’ visit from a named adviser, with letter advising outcome and recommendations
Focused work on areas of challenge (half day)
Advice about access to services for children with special educational needs and disabilities, e.g. access to PAL line or SENDCo forum
New initiative briefings as necessary, e.g. EYFS changes
Access to annual ‘transitions to school’ meetings
Termly briefing meetings for all settings / childminders
Electronic early years bulletin (at least three times per year)
Support on the EYFS Profile assessment and progress check at two.
Mandatory training
Safeguarding children training – Level 1
Safeguarding children training – Level 2 / 3

Training

Camden will continue to provide a range of high quality, relevant training opportunities for early education providers. The training programme will be published termly through the Camden Learning website and providers will need to book onto sessions using their learning blocks as payment. As set out above, enhanced providers will have a basic allocation of 20 learning blocks as part of their subscription but can purchase additional learning blocks on an ad hoc basis as required.

Camden will continue to work with providers to ensure that the training offer meets local needs.

Consultation – 13 November to 8 December

We highly value the strong relationship that we have developed with providers and, while we recognise that this represents a significant change, we hope that all providers will want to continue to benefit from the full range of support services that are available and will decide to join our new Quality Improvement Partnership as Enhanced Members.

Before we implement a new model next year, we would like to hear your views about our proposals.

Please complete our brief survey and return it to the freepost address on the back of this document or visit the website, camden.gov.uk/earlyyearsfunfunding, to complete it online.

You can also come to our **next early years providers’ forum at the Crowndale Centre on Wednesday, 22 November, from 2 to 4pm** where you can ask us questions about these proposed changes face to face.

Consultation questions – please respond before 5pm on 8 December 2017

Question 1.

Camden can no longer afford to provide all quality support and training services free at the point of delivery.

Do you agree with our proposal to keep a fully-funded 'core offer' of quality support for early years providers and to charge for training and additional bespoke quality support?

☐ Yes

☐ No

Question 2.

Do you think that the proposed subscription fee for Enhanced Members is reasonable?

☐ Yes

☐ No

If no, what would be a reasonable figure?

Question 3.

Do you think your setting will subscribe as an Enhanced Member?

☐ Yes

☐ No

If no, do you think you will buy training and additional bespoke quality support on an ad hoc basis?

Question 4.

Do you have any other comments?

Use the space provided below.

About you

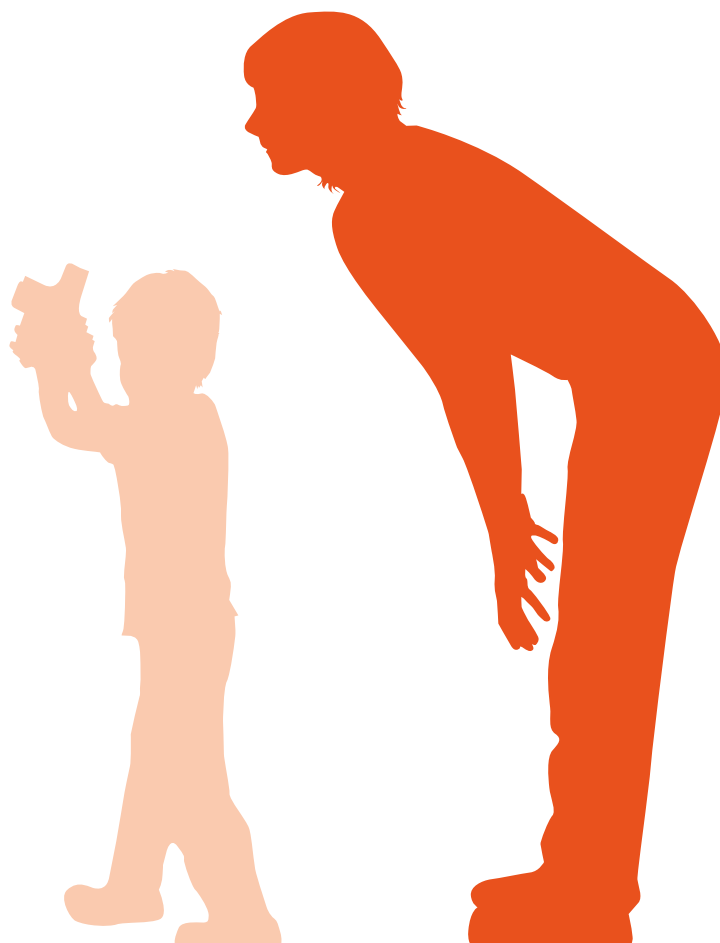
Finally, it would really help us to know if we are hearing from a broad range of providers so that we can see if we are gathering views from as wide a group as possible. Please answer the following few questions below.

What kind of provider are you?

- ☐ Childminder
- ☐ Private sector nursery
- ☐ Voluntary and community sector nursery
- ☐ Independent sector nursery

Which elements of the current free offer do you deliver?

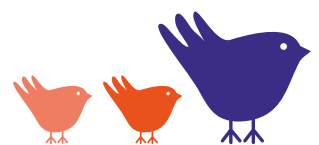
- ☐ Two year olds
- ☐ Three and four year olds



You can respond to our questions online at **camden.gov.uk/earlyyearsfundings** or post your completed questionnaire in an envelope to the following freepost address (no stamp needed):

Integrated Early Years Service, Floor 4, 5PS
Freepost RSLT-RJBR-TXAA
London Borough of Camden
Town Hall
London
WC1H 9JE

If you have any queries about these proposals or the consultation, you can email your questions to **earlyyearsfundings@camden.gov.uk**



Camden Sure Start
Your journey. Our support.