

Important- Public Consultation

This is your opportunity to comment on the Council's plans
This is a postal and on-line consultation

October 2012

Building Schools for Future Adelaide Road Proposed signalised pedestrian crossing

We are seeking your views on proposals to implement a new signalised pedestrian crossing on Adelaide Road, between Avenue Road and Winchester Road, to aid students and staff travelling to the rebuilt Swiss Cottage School, which is being constructed as part of Camden's Building Schools for Future initiative.

An assessment has been made of the existing pedestrian crossing facilities on Adelaide Road close to the school, and it has demonstrated that they are not sufficient to safely accommodate the predicted numbers of pedestrians that will cross here once the school has opened fully. We are therefore proposing to construct a new signalised pelican crossing facility on Adelaide Road, between Avenue Road and Winchester Road, close to the proposed entrance to the new school grounds. This is in conjunction with improving the pedestrian facilities and adding "countdown" at the junction of Adelaide Road with Winchester Road, where Transport for London will be upgrading the signals. "Countdown" is a modern addition to signal crossings where the number of seconds a pedestrian has left to cross the road is displayed next to the green man. It is currently in place outside Oxford Street and Holborn tube stations.

To facilitate this new pelican crossing which will operate with a push button system, the existing 3 Pay & Display parking bays and 2 Car Club bays located on Adelaide Road outside the Leisure Centre will need to be removed. Unfortunately due to the parking demand in the area, we cannot find any space to relocate the bays. The footway beside the new school on the south side of Adelaide Road will also be widened to narrow the crossing distance of the new facility and increase the space available for pedestrians waiting close to the new school entrance.

The proposals are shown on the drawing and listed below:

1. Construct new signalised pelican crossing on Adelaide Road between Avenue Road and Winchester Road. This will be in two stages, with a large refuge island in the centre of the road.
2. Remove 3 existing Pay & Display bays on the north side of Adelaide Road beside the leisure centre.
3. Remove 2 existing Car Club bays on the north side of Adelaide Road beside the leisure centre.
4. Widen the footway on the south side of Adelaide Road beside the new crossing facility.

If the proposals are agreed, works will be carried out by Summer 2013. Funding for the scheme will be supplied from a ring-fenced amount agreed by Cabinet, as part of the Council's Building Schools for the Future programme.

The Council would be pleased to hear your views on the proposed measures. Details on how to respond to this consultation are included.

This is your opportunity to comment

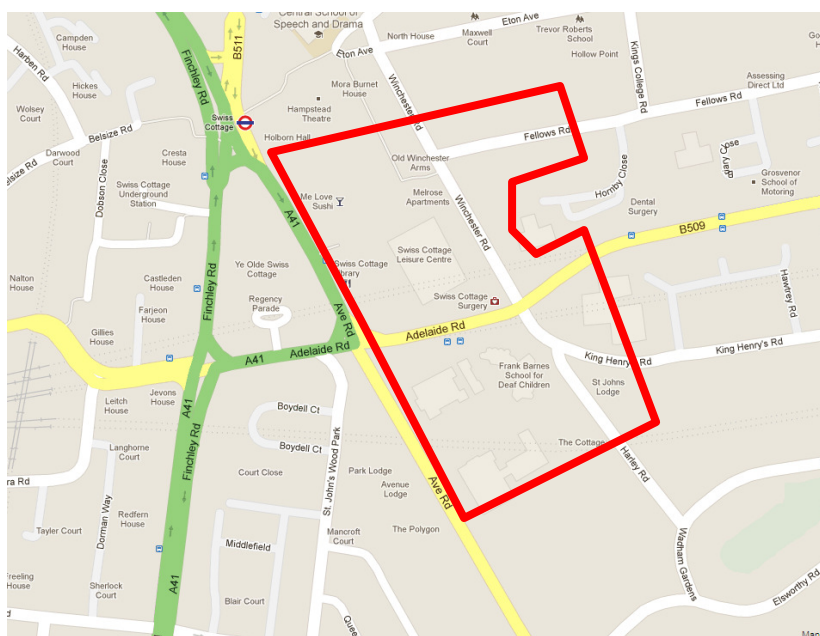
We need your views as this consultation exercise is intended to find out if there is broad public support for the proposals set out in this leaflet.

Please send your response by **23 November 2012**, to: **London Borough of Camden, Culture and Environment Directorate, Transport Strategy Service, FREEPOST RSLT-RJBR-TXAA, London, WC1H 8EQ**. Please note no stamp is required and only ONE reply per household, business or organisation will be accepted. Alternatively, you can send your response by email to joanna.alker@camden.gov.uk. You must give your postal address if you want us to consider your views.

While it will not be possible to reply to you individually, all comments will be taken into account. The Cabinet member for Sustainability will make a decision whether or not to proceed with the scheme in January 2013 and you will be informed of the outcome of this consultation and the Council's decision within three months, where possible.

Detail of this consultation including plans showing the proposals are also available on the Council's website, via <https://consultations.wearecamden.org/>.

Under the Local Government (Access to Information) Act 1985, we cannot treat your response confidentially, as it will be available for public inspection. Please only write to us about the consultation issue. If you want to comment on any other matter, please use a separate letter.



Who is being informed?

All properties on affected roads outlined in red on the plan will be informed along with Local and Statutory Groups, Emergency Services and Ward Members.

If you would like further information then please contact us using the information provided below.

Joanna Alker
Senior Design Engineer
Transport Strategy Service
London Borough of Camden
Tel: 020 7974 2466
[email: joanna.alker@camden.gov.uk](mailto:joanna.alker@camden.gov.uk)

Simi Shah
Design Team Manager
Transport Strategy Service
London Borough of Camden
Tel: 020 7974 2066
[email: simi.shah@camden.gov.uk](mailto:simi.shah@camden.gov.uk)

Thank you for replying to this consultation

PROPOSED SIGNALISED PEDESTRIAN CROSSING

Adelaide Road

