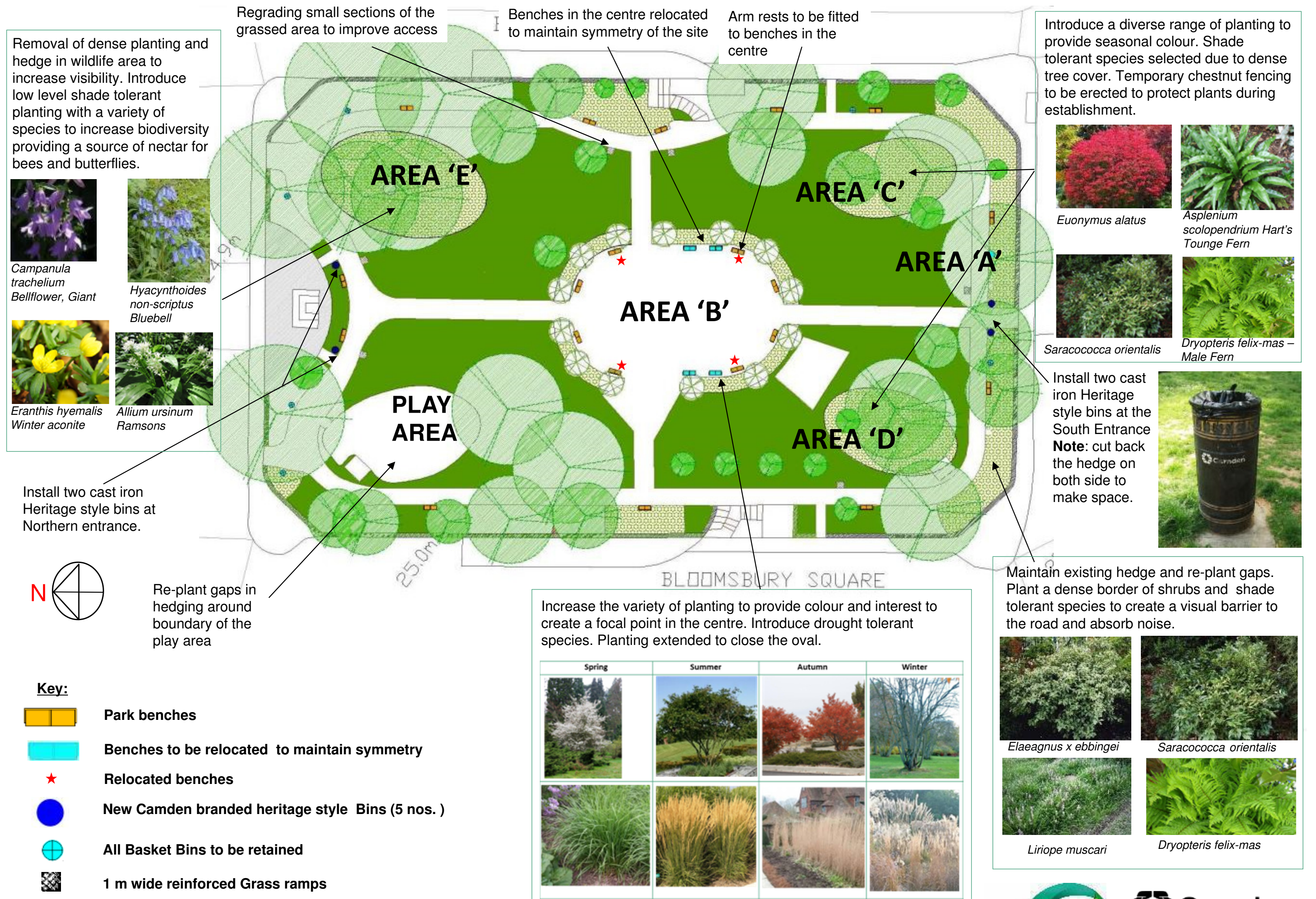
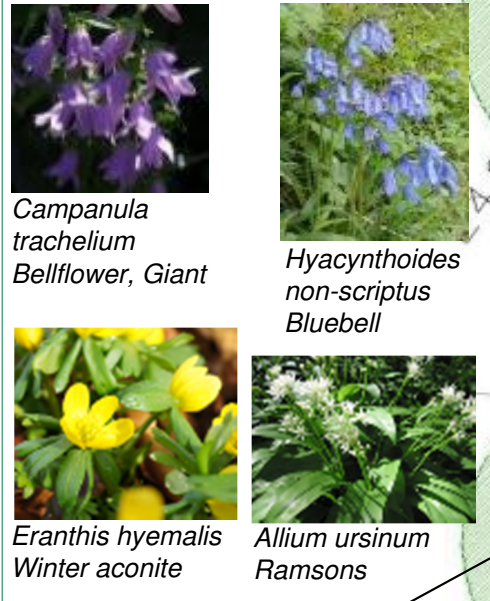


BLOOMSBURY SQUARE GARDEN IMPROVEMENT PLAN



Removal of dense planting and hedge in wildlife area to increase visibility. Introduce low level shade tolerant planting with a variety of species to increase biodiversity providing a source of nectar for bees and butterflies.



Regrading small sections of the grassed area to improve access

Benches in the centre relocated to maintain symmetry of the site

Arm rests to be fitted to benches in the centre

Introduce a diverse range of planting to provide seasonal colour. Shade tolerant species selected due to dense tree cover. Temporary chestnut fencing to be erected to protect plants during establishment.



Install two cast iron Heritage style bins at the South Entrance
Note: cut back the hedge on both side to make space.



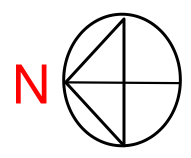
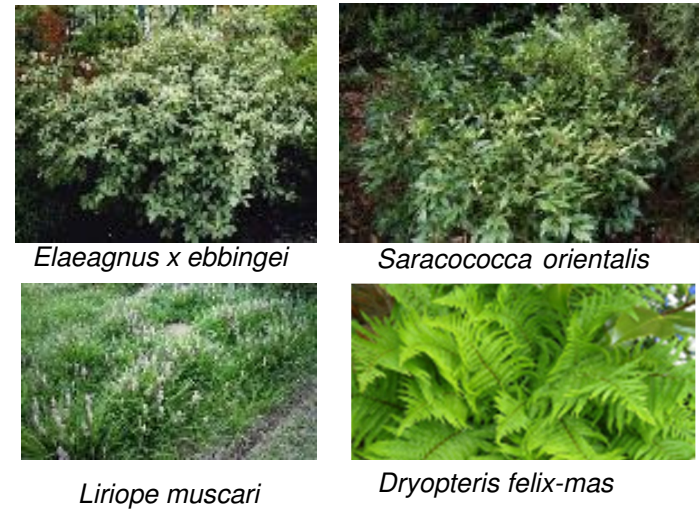
Install two cast iron Heritage style bins at Northern entrance.

Re-plant gaps in hedging around boundary of the play area

Increase the variety of planting to provide colour and interest to create a focal point in the centre. Introduce drought tolerant species. Planting extended to close the oval.

Spring	Summer	Autumn	Winter

Maintain existing hedge and re-plant gaps. Plant a dense border of shrubs and shade tolerant species to create a visual barrier to the road and absorb noise.



- Key:**
- Park benches
 - Benches to be relocated to maintain symmetry
 - Relocated benches
 - New Camden branded heritage style Bins (5 nos.)
 - All Basket Bins to be retained
 - 1 m wide reinforced Grass ramps