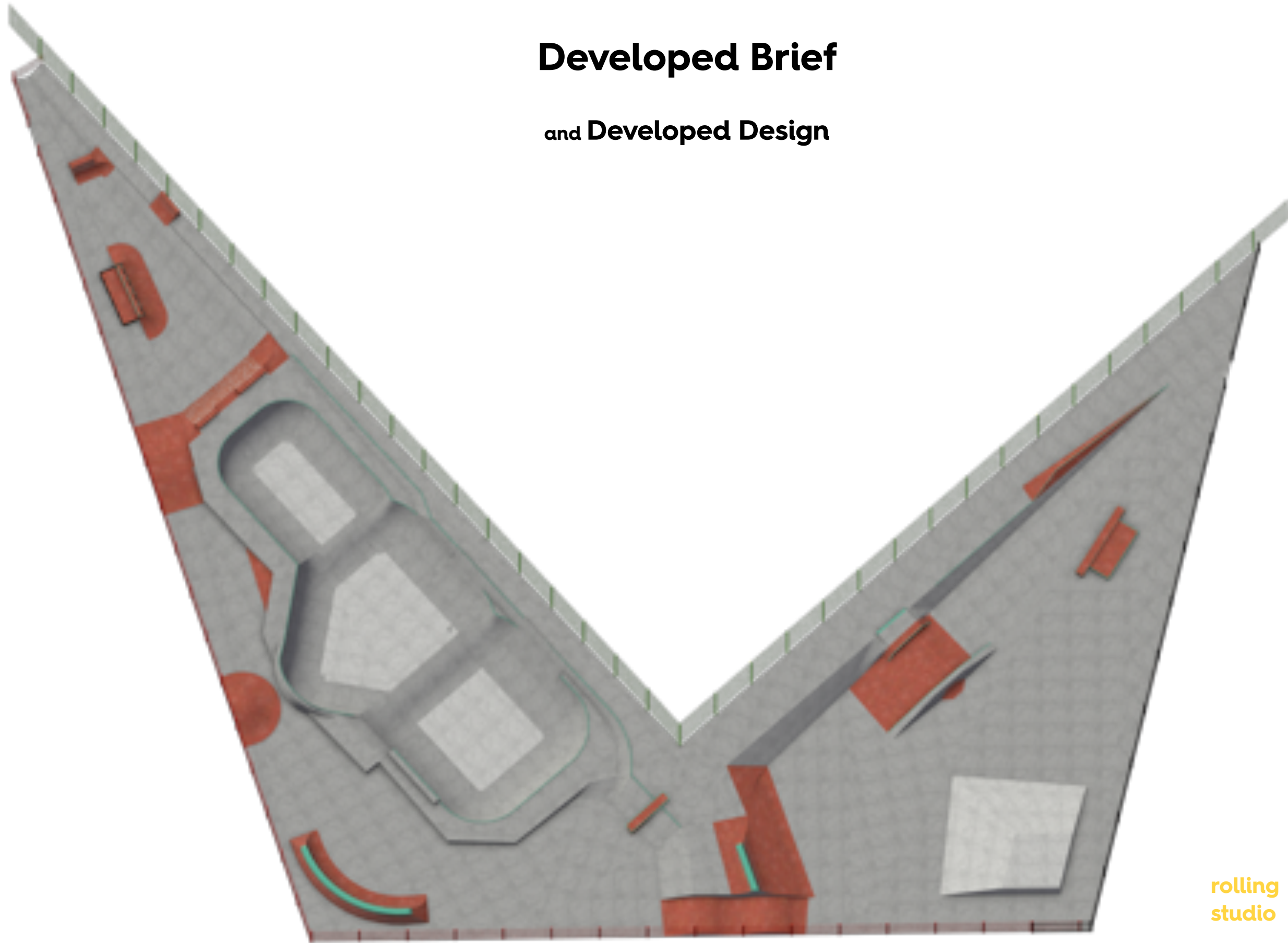


Canteloves Gardens Skatepark Refurbishment 2019

Developed Brief

and Developed Design



rolling
studio

Developed Brief

The brief and current proposal has been developed through a series of engagement events.

This began with a site visit and design workshop, with the skatepark user group, on 25th February 2019. This established the key objectives of the refurbishment from the user group's perspective. This lead into the first public engagement at the skatepark. Camden held this event with Rolling Studio in the skatepark on 9th March. Dozens of responses were collected from skaters, BMX and scooter riders, and the general public including the Friends of Cantelowes Gardens.

The second round of engagements included a design workshop with the skatepark user group on 25th March, an intense period of design work and revisions, and a site meeting with the build team to review repair work. Three design options were produced in response to the expanding brief.

Saturday 27th April 2019 saw engagement on these three design options (*right*) at the skatepark. A clear direction was obtained from both the skatepark user group and the wider public, as set out below.

Refurbishment and repairs.

- Underpin and stitch existing big hip back into existing slab;
- Grind/polish floor of bowl;
- Clean and fill missing sections of concrete with Ardex;
- Paint transitions of bowl - transitions only, not floor slab;
- Raise railing to big hip by 2cm to improve RoSPA inspection score.

New works.

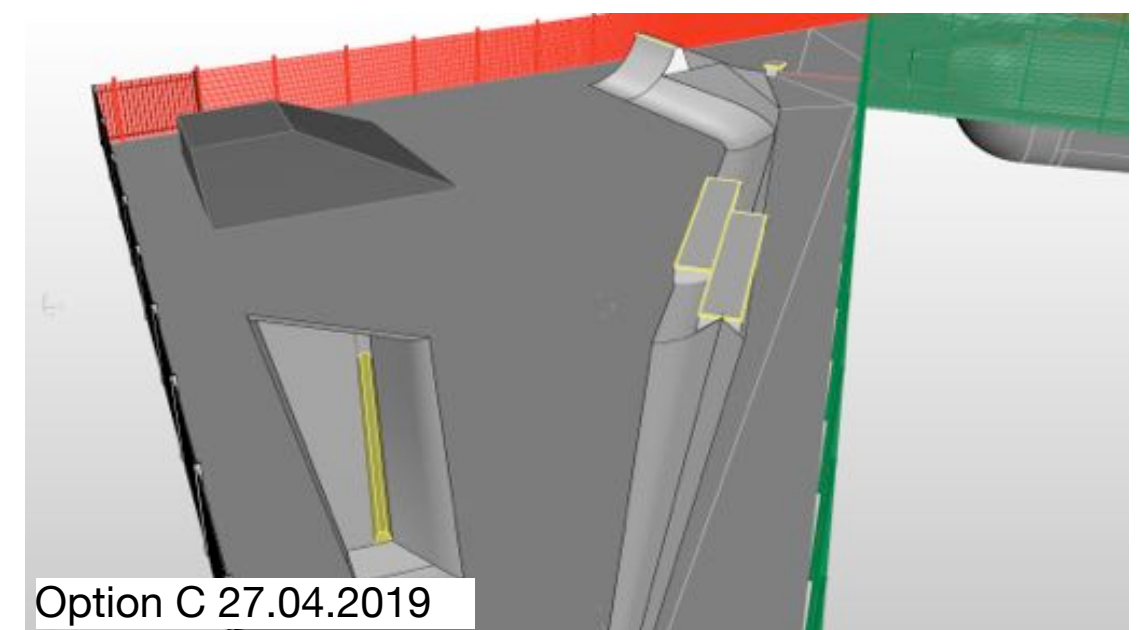
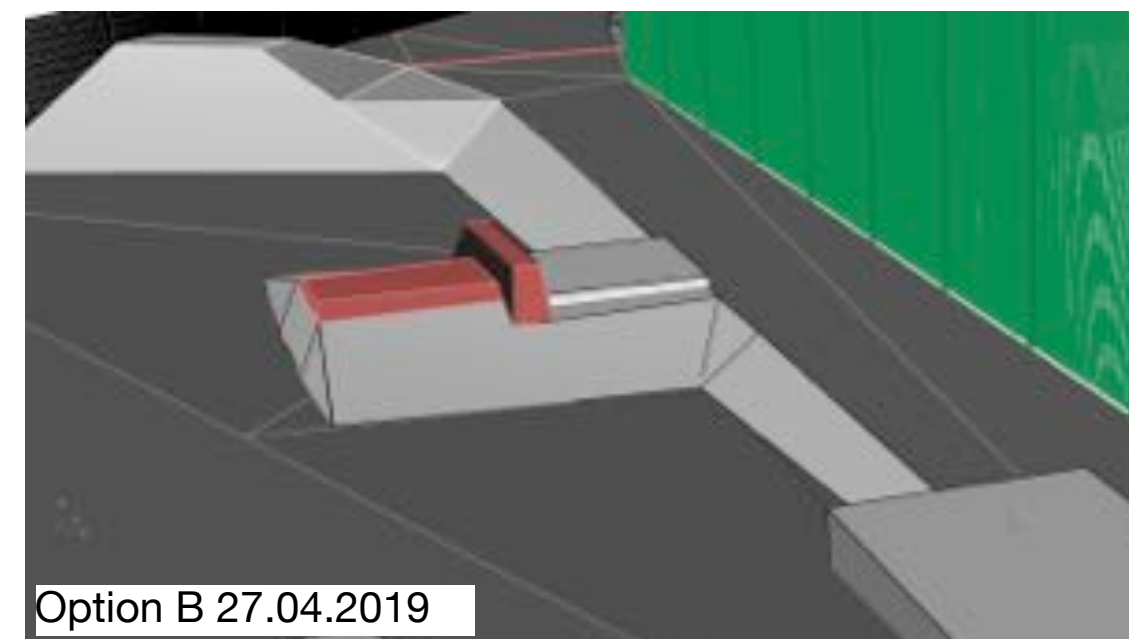
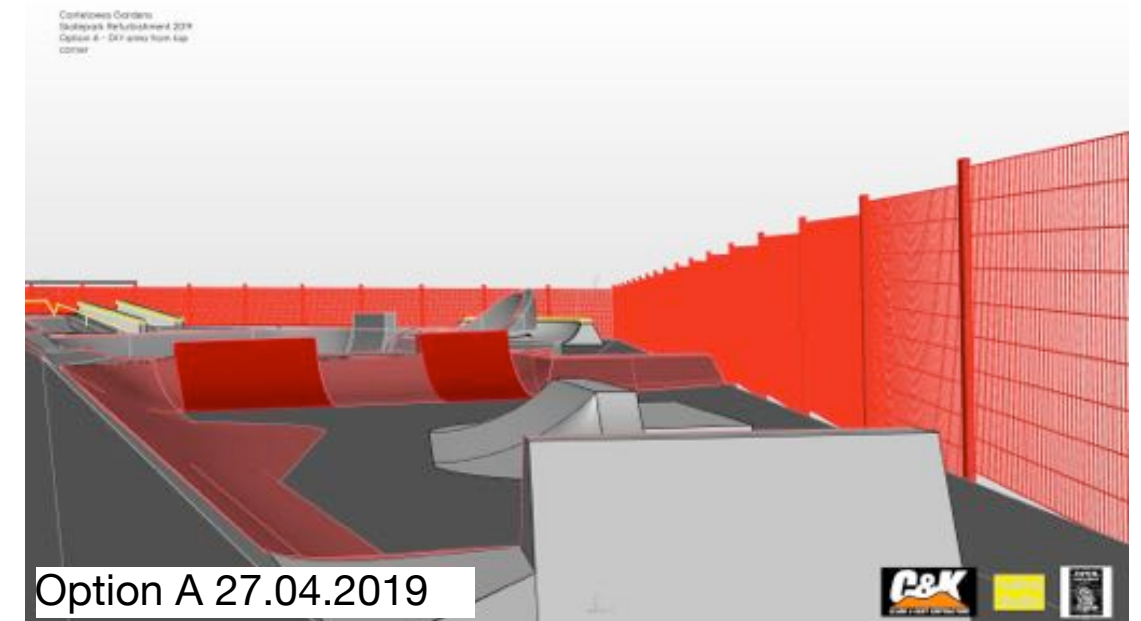
Proposals are to develop the following attributes of the engagement proposals:

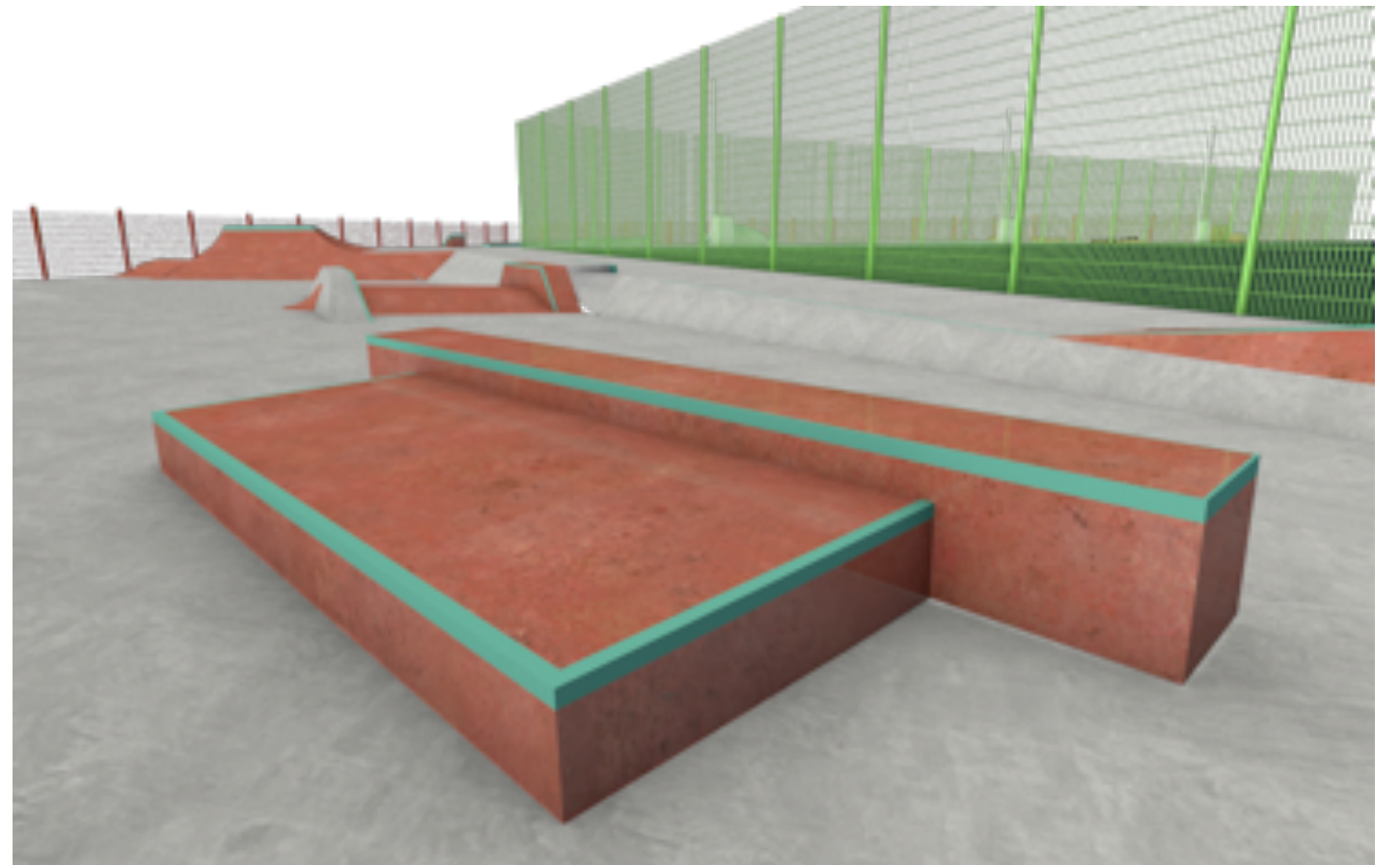
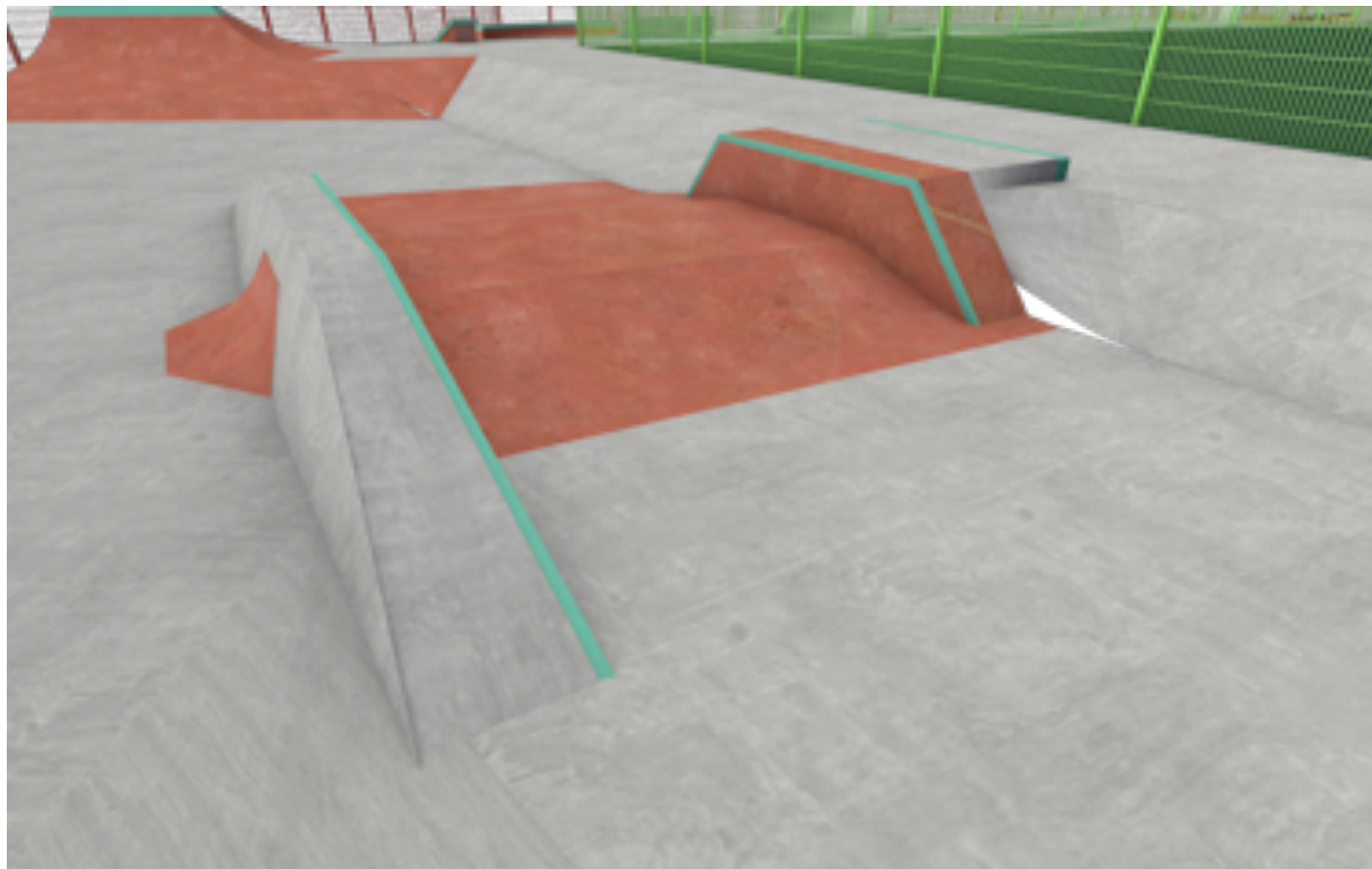
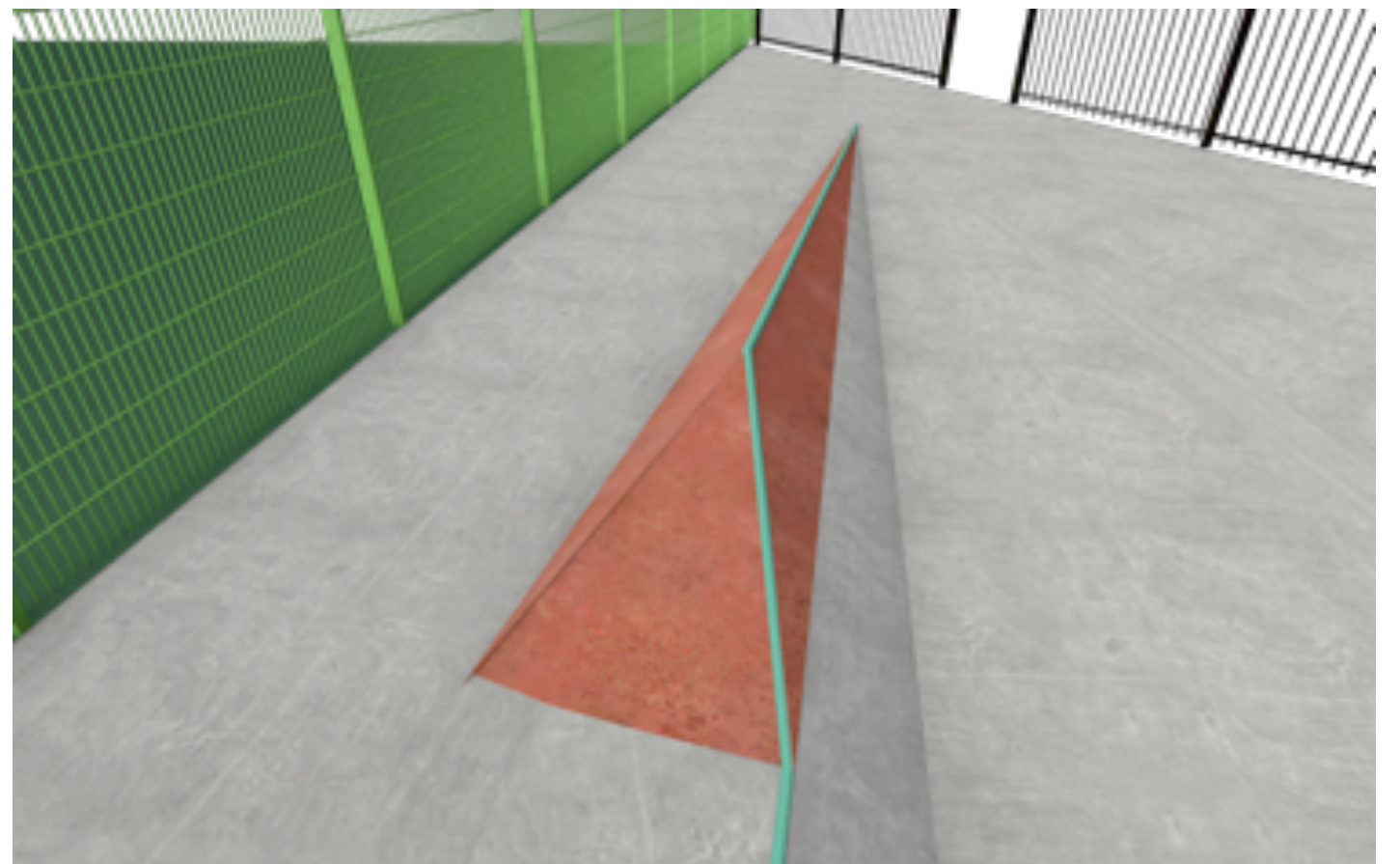
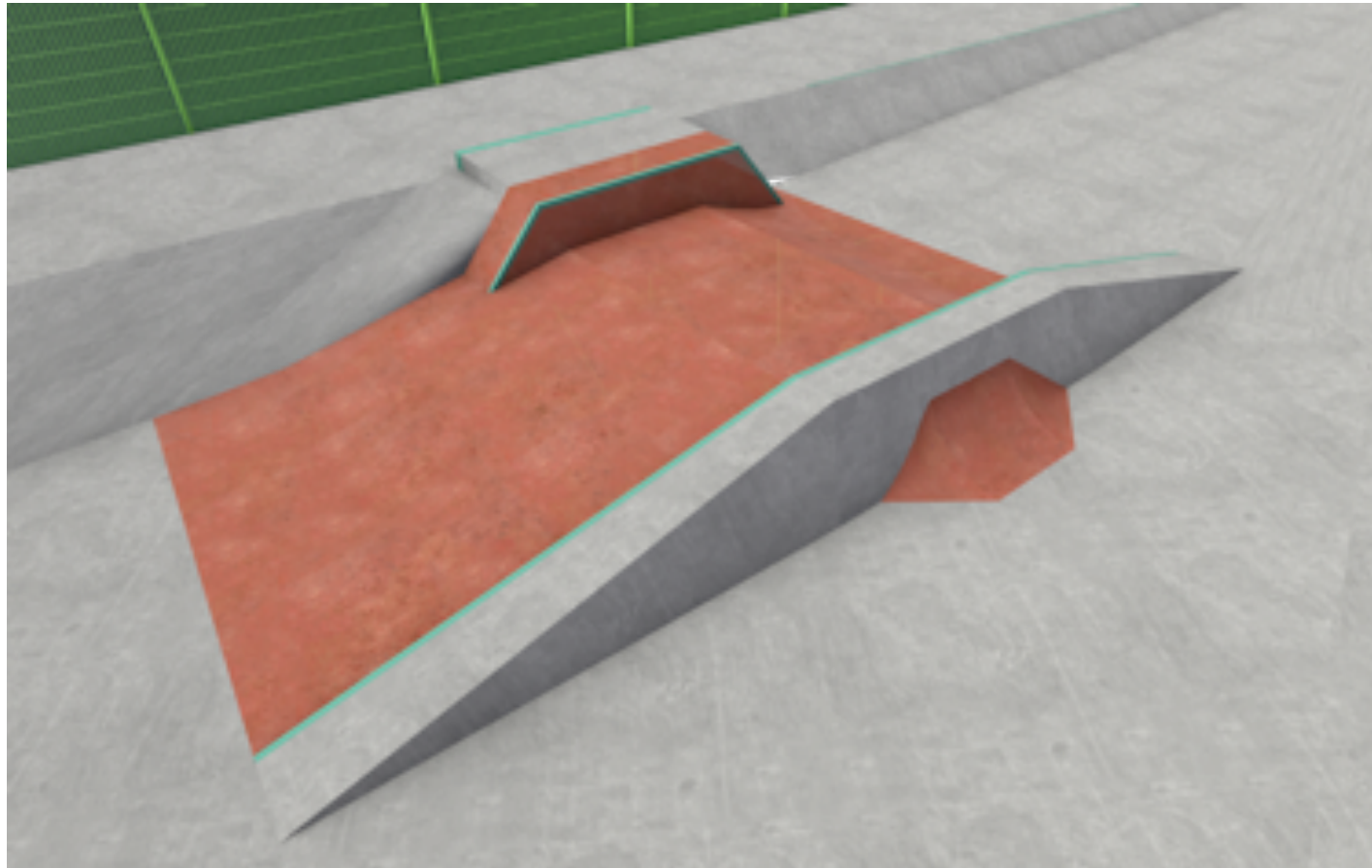
From Option A: a *DIY*-style beginner/fun area to the NW corner of the park, removing the existing rail but without resorting to the extensive overbuild approach of option B; upgrading the banana rail into a carveable, transitioned slider.

From Option B: use the lower driveway profile adjacent to the bowl within new, less extensive proposals; reconfigure driveway but in a considerable more extensive manner, see below.

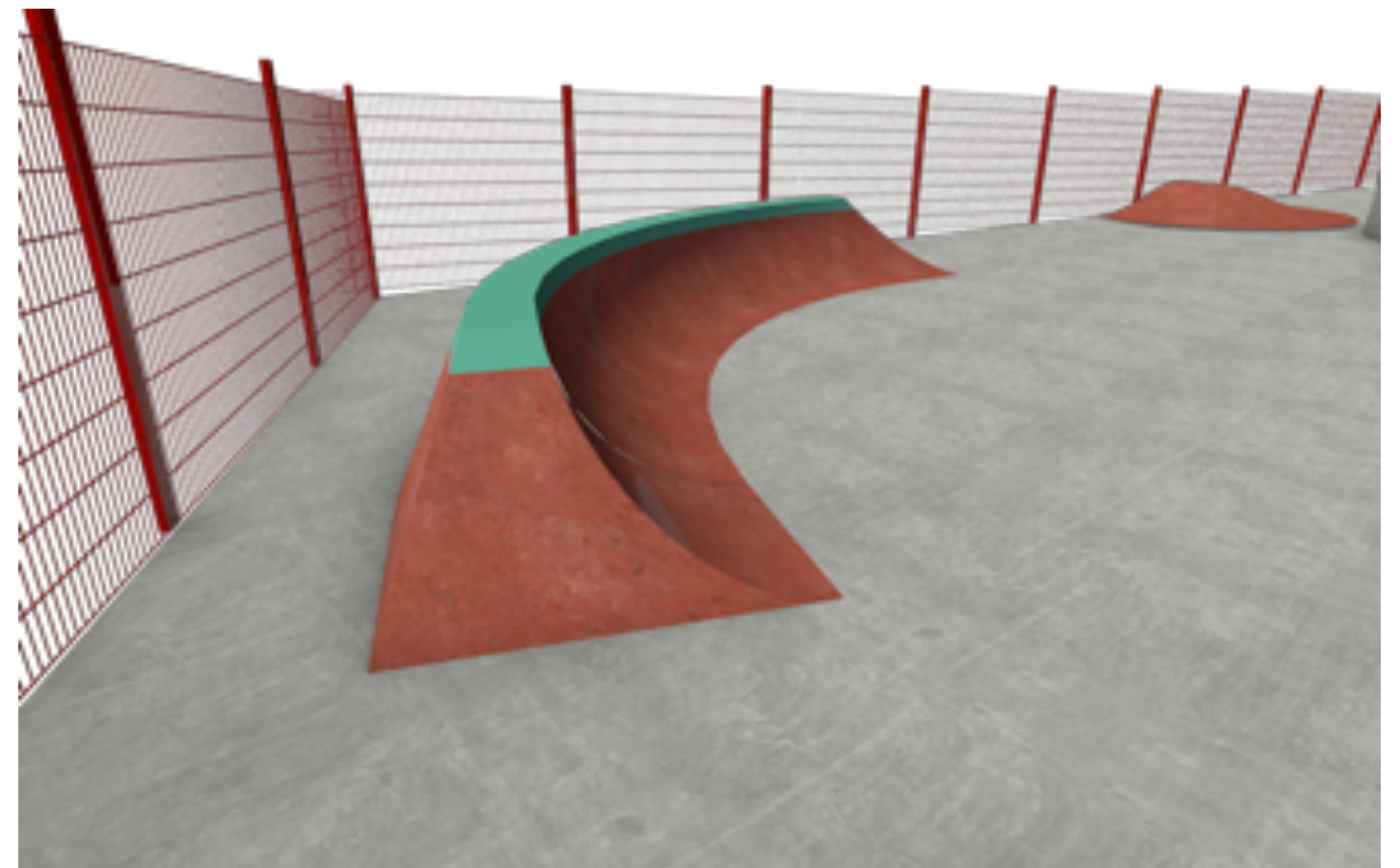
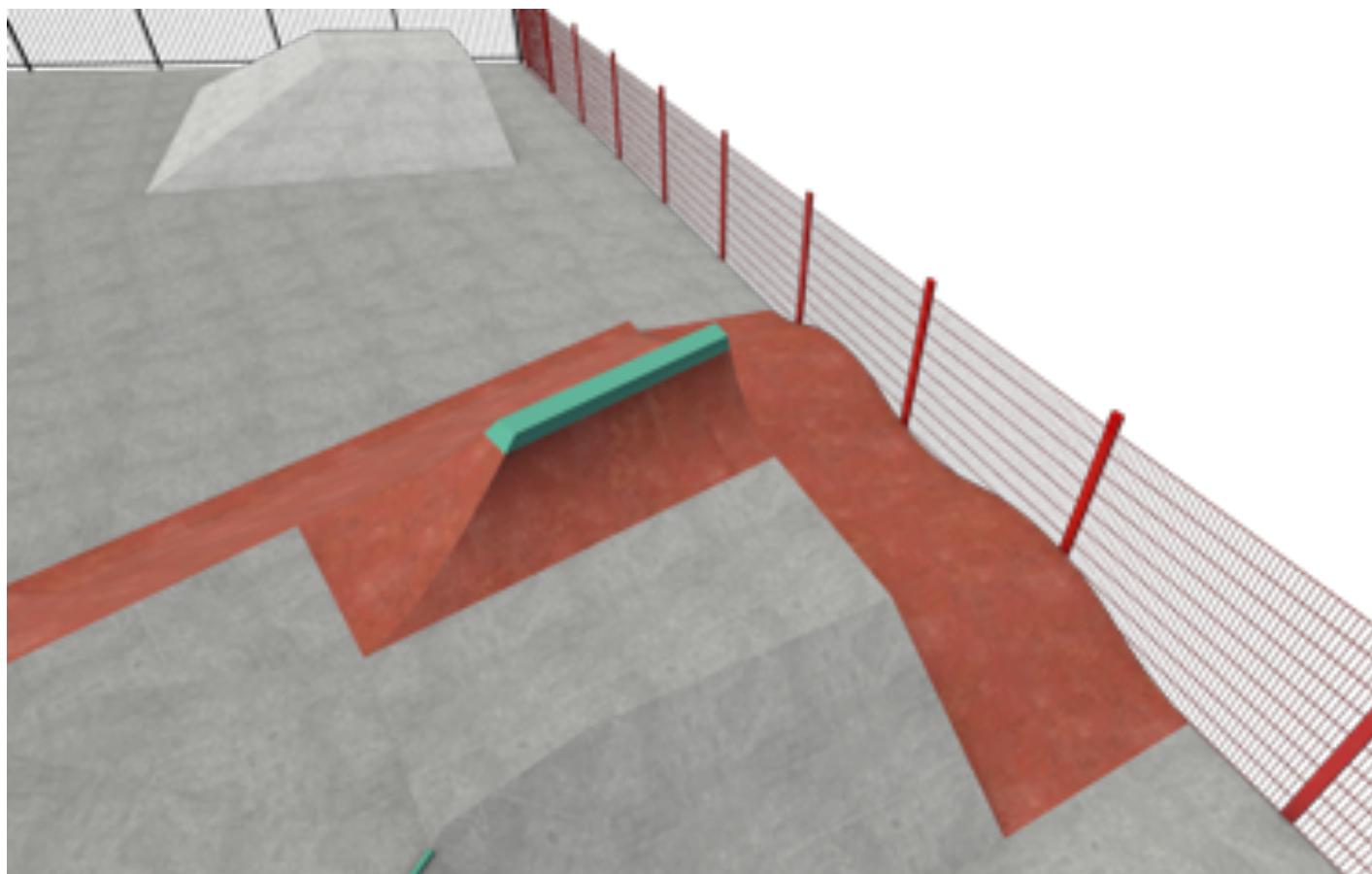
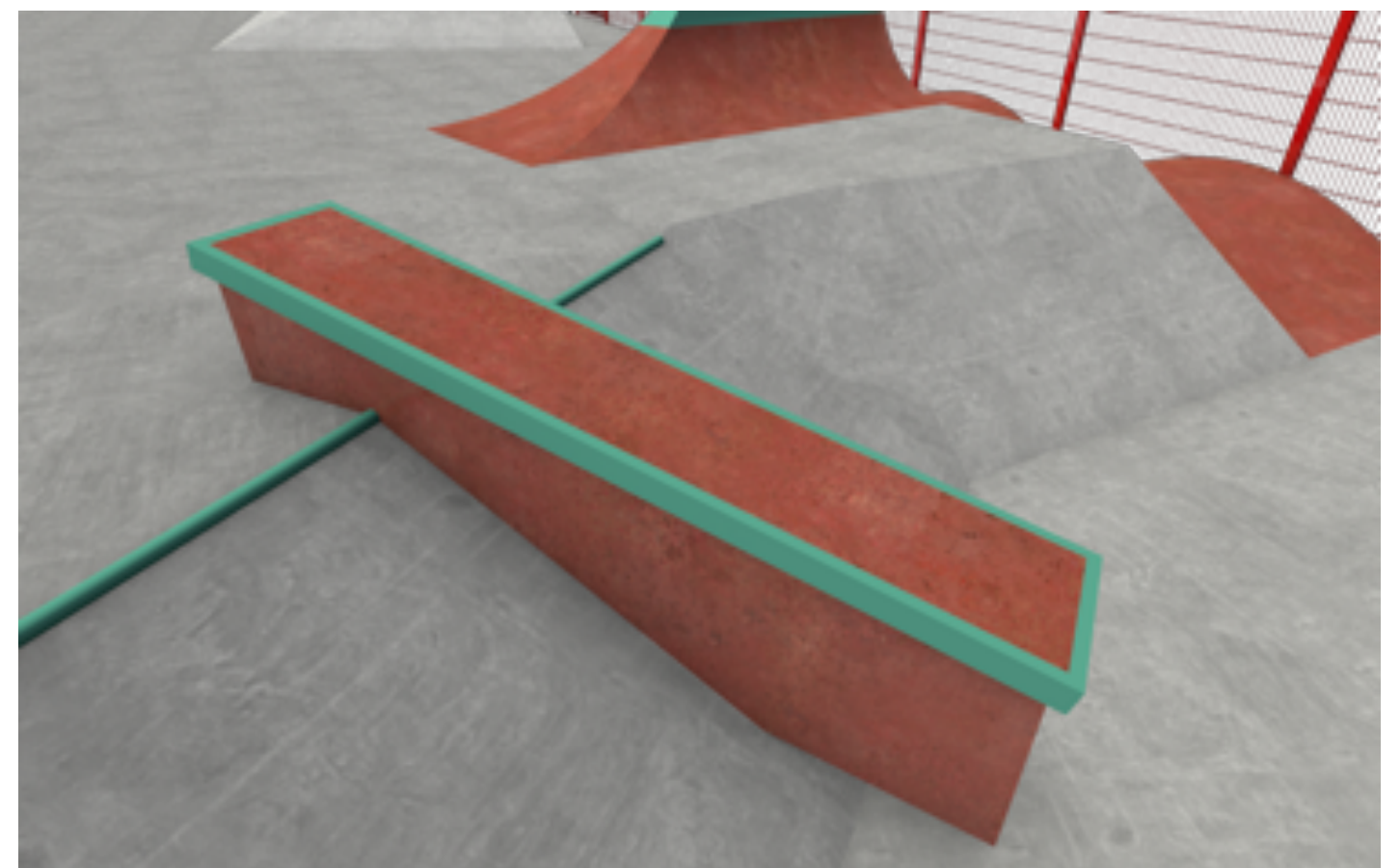
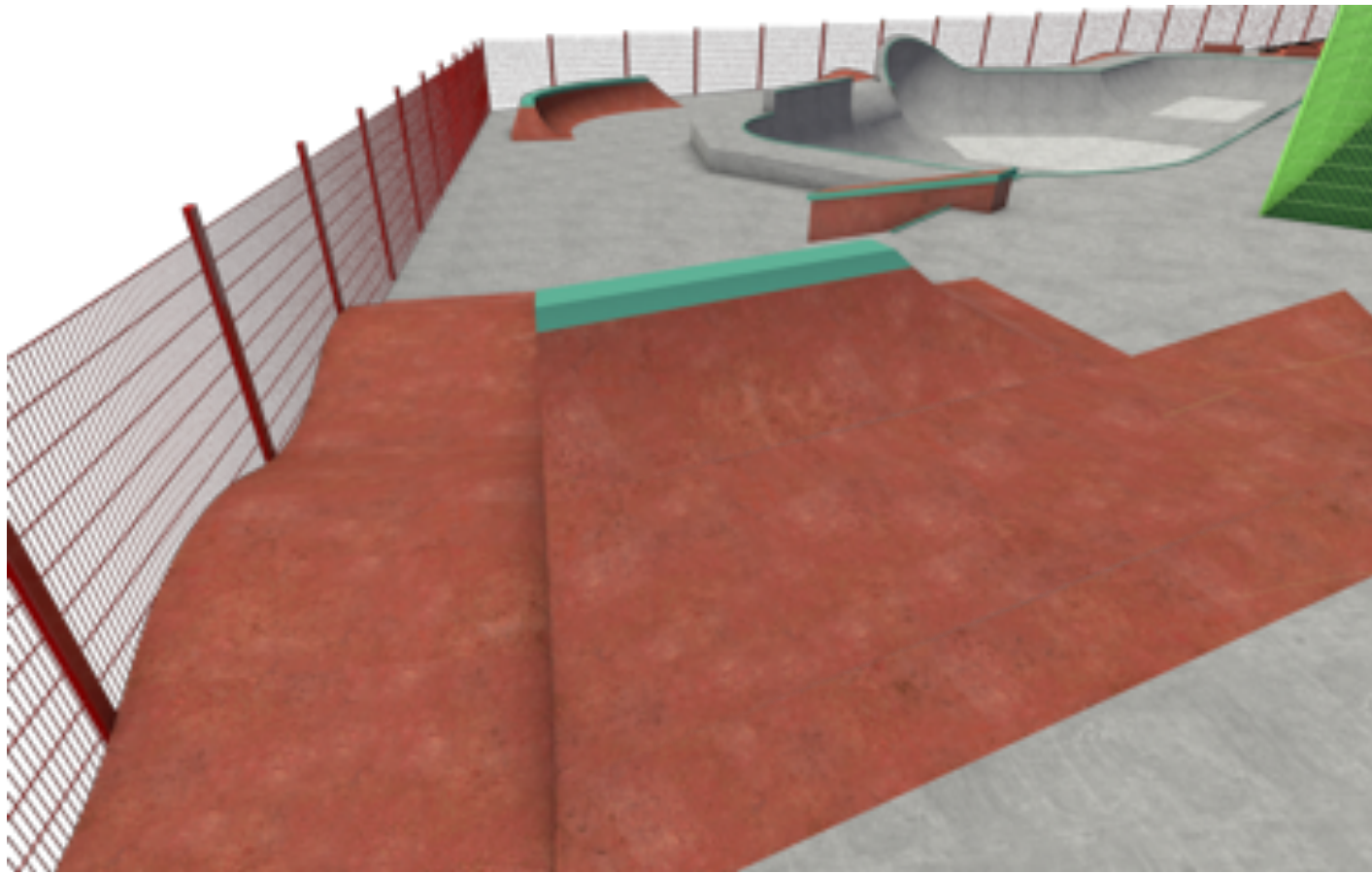
From Option C: develop design of new pyramid as banked feature with extension; retain flow as existing with small hip from extension towards bowl platform; add/consider wedge/curb feature in place of existing block.

From discussion during engagement: Extensive works to existing driveway - retain placement and wall-ride, remove centre section and reinstate with modern driveway profile, add transition element to wall-ride.

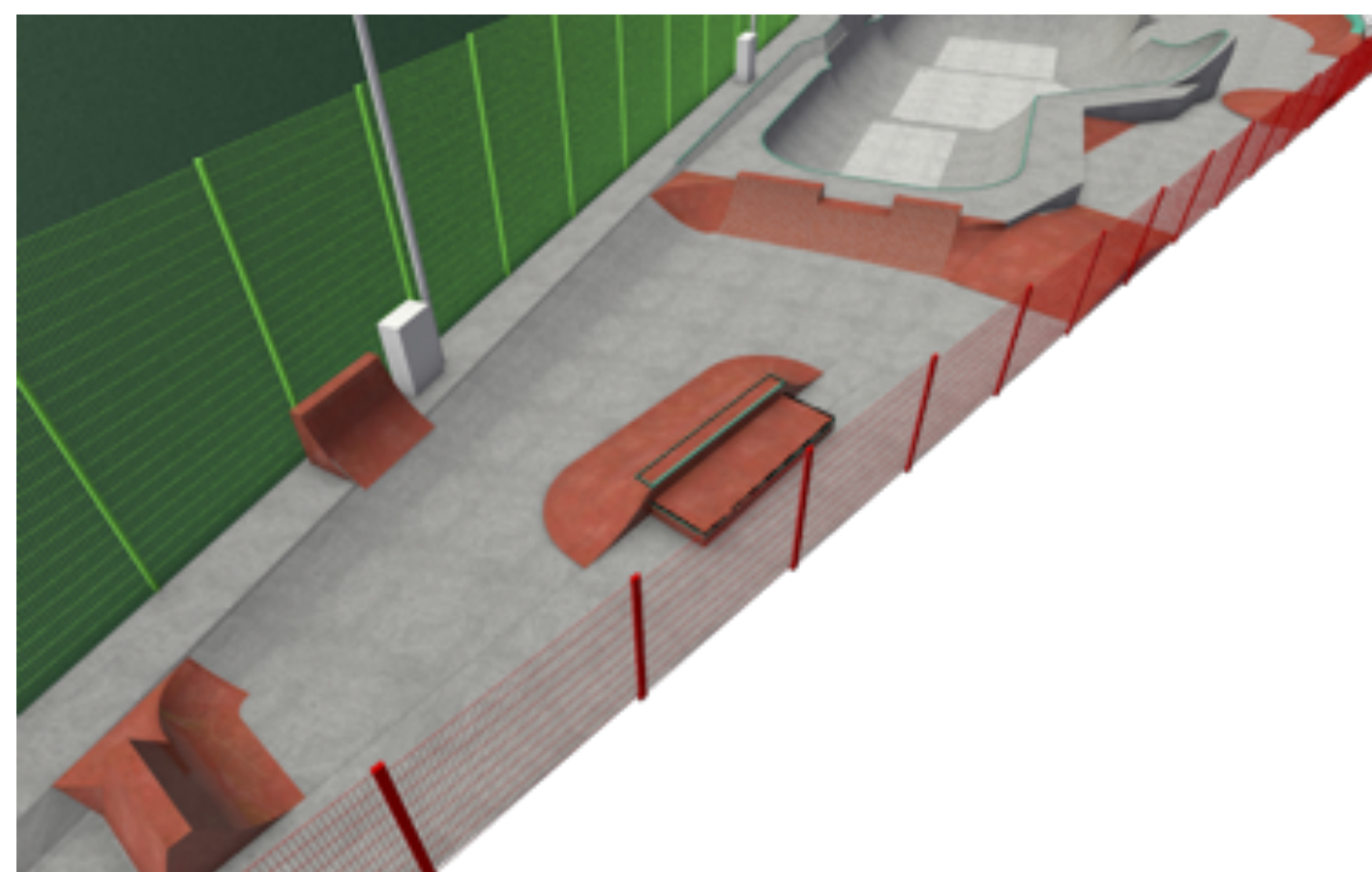
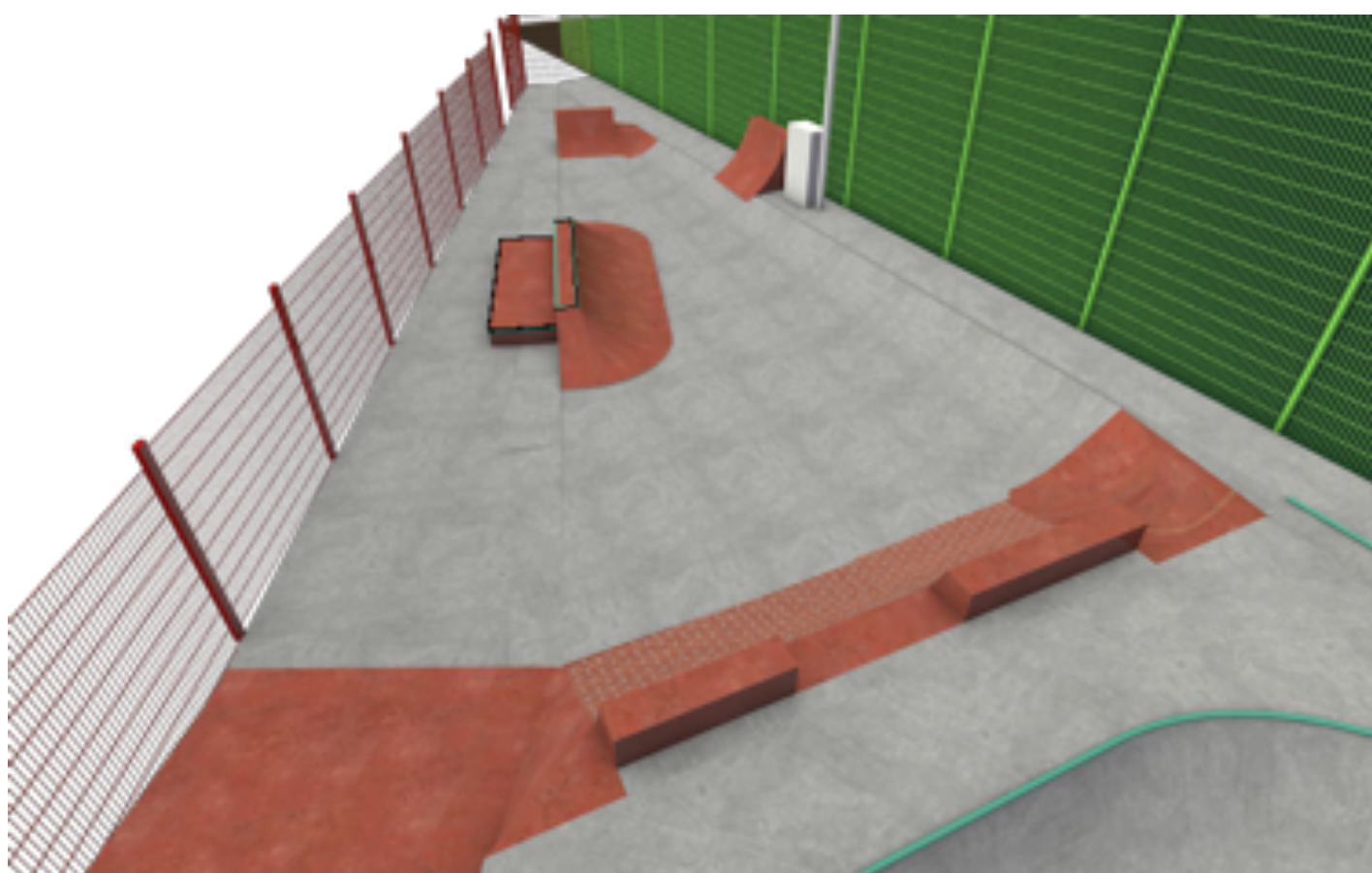
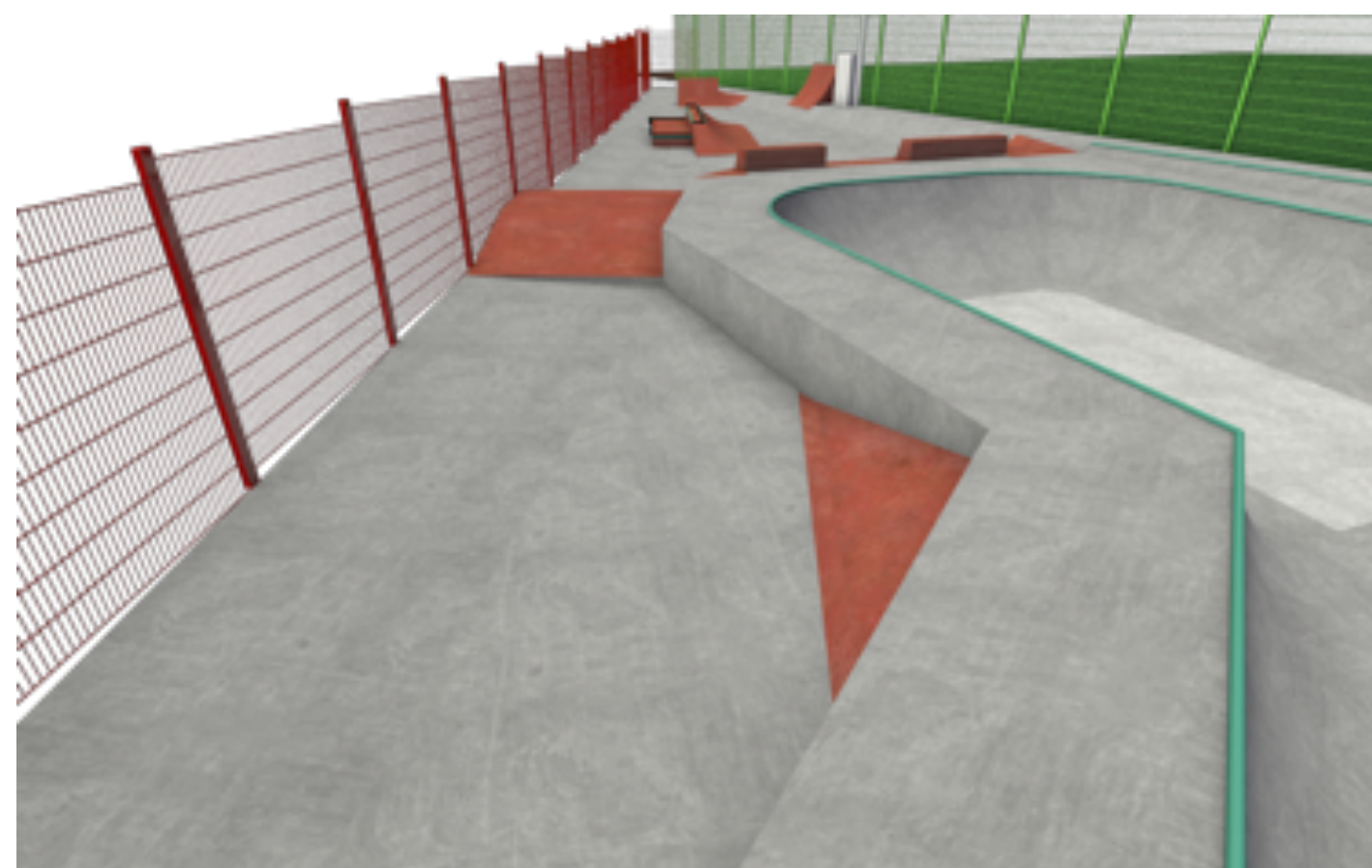
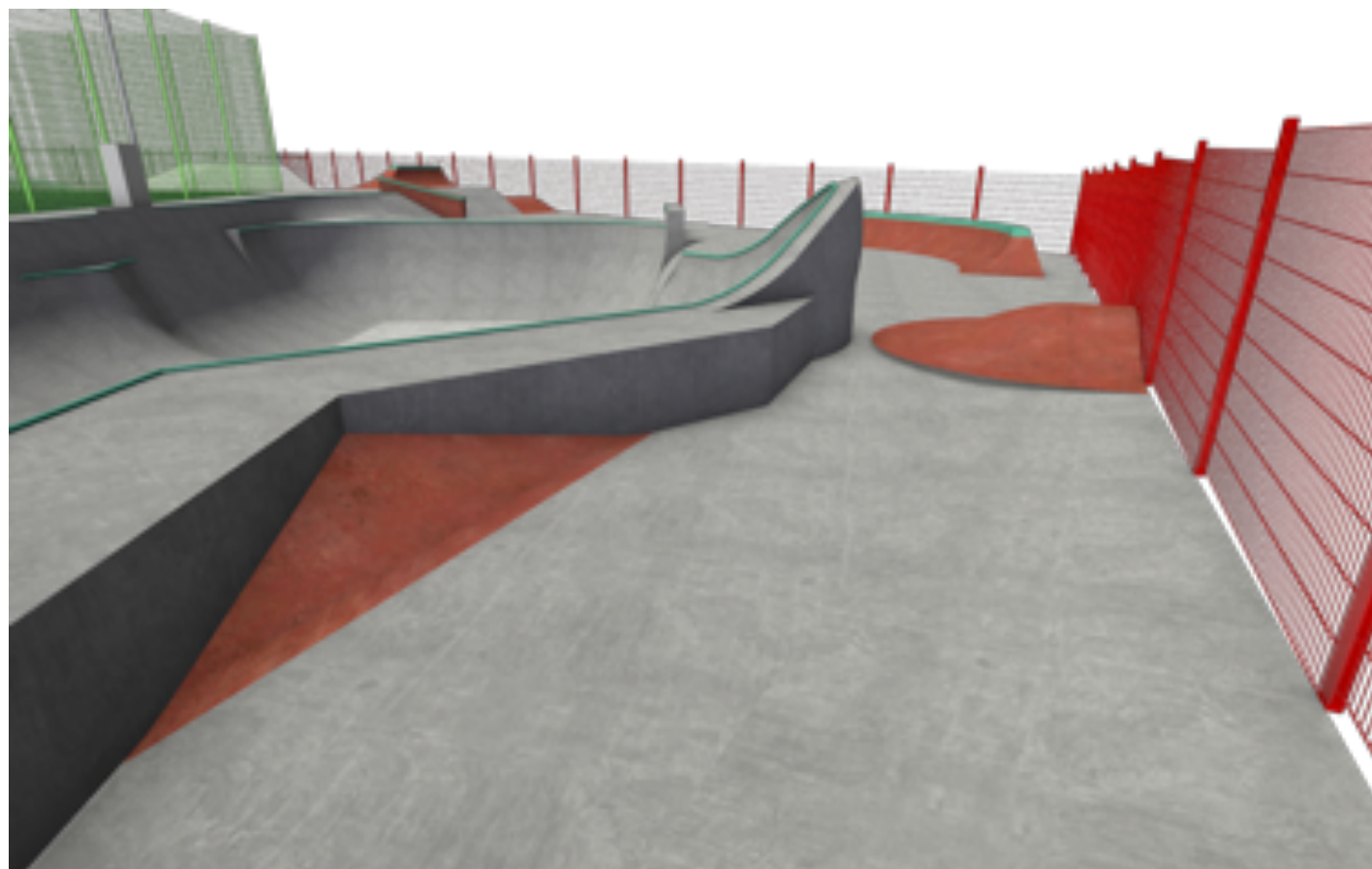




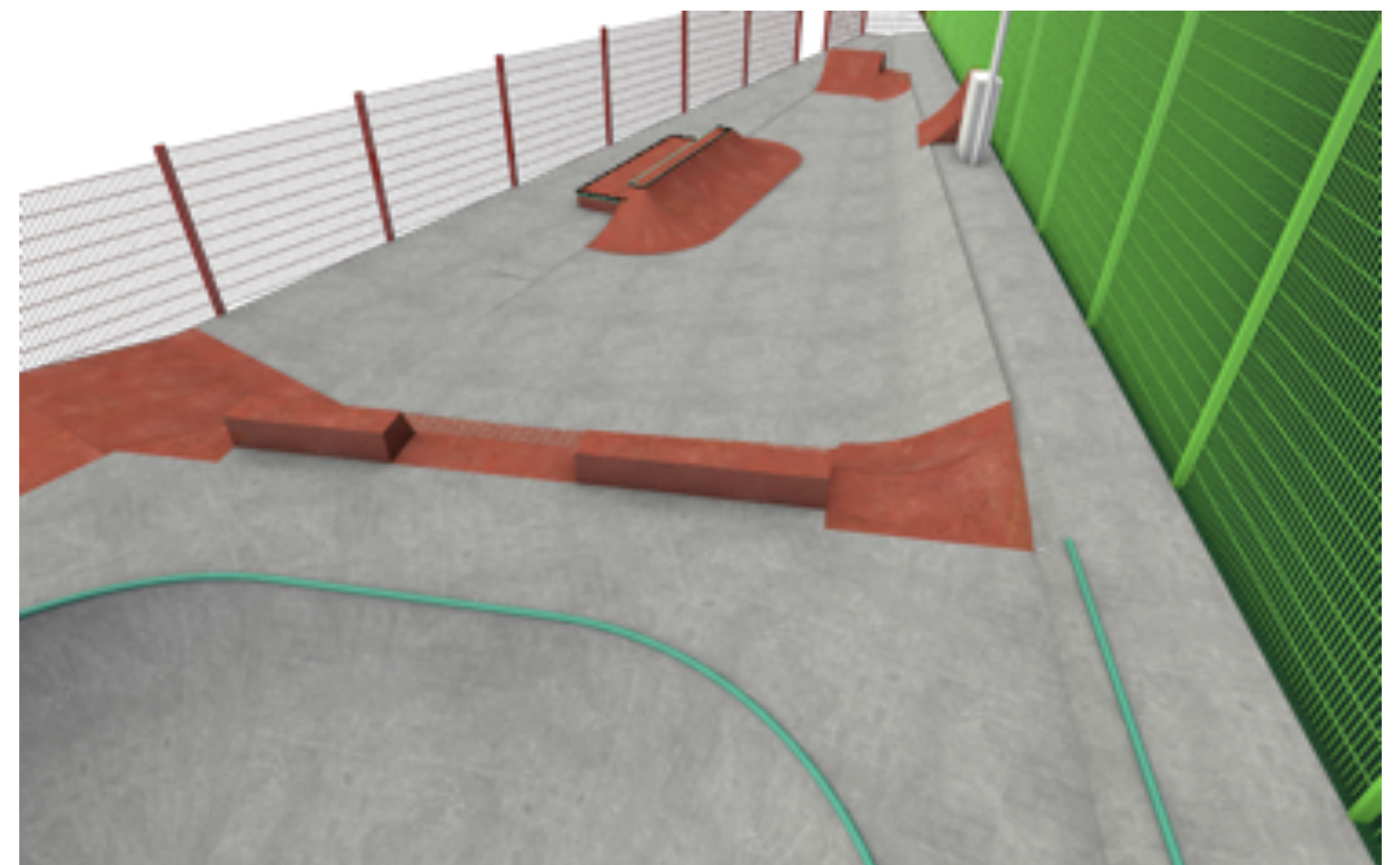
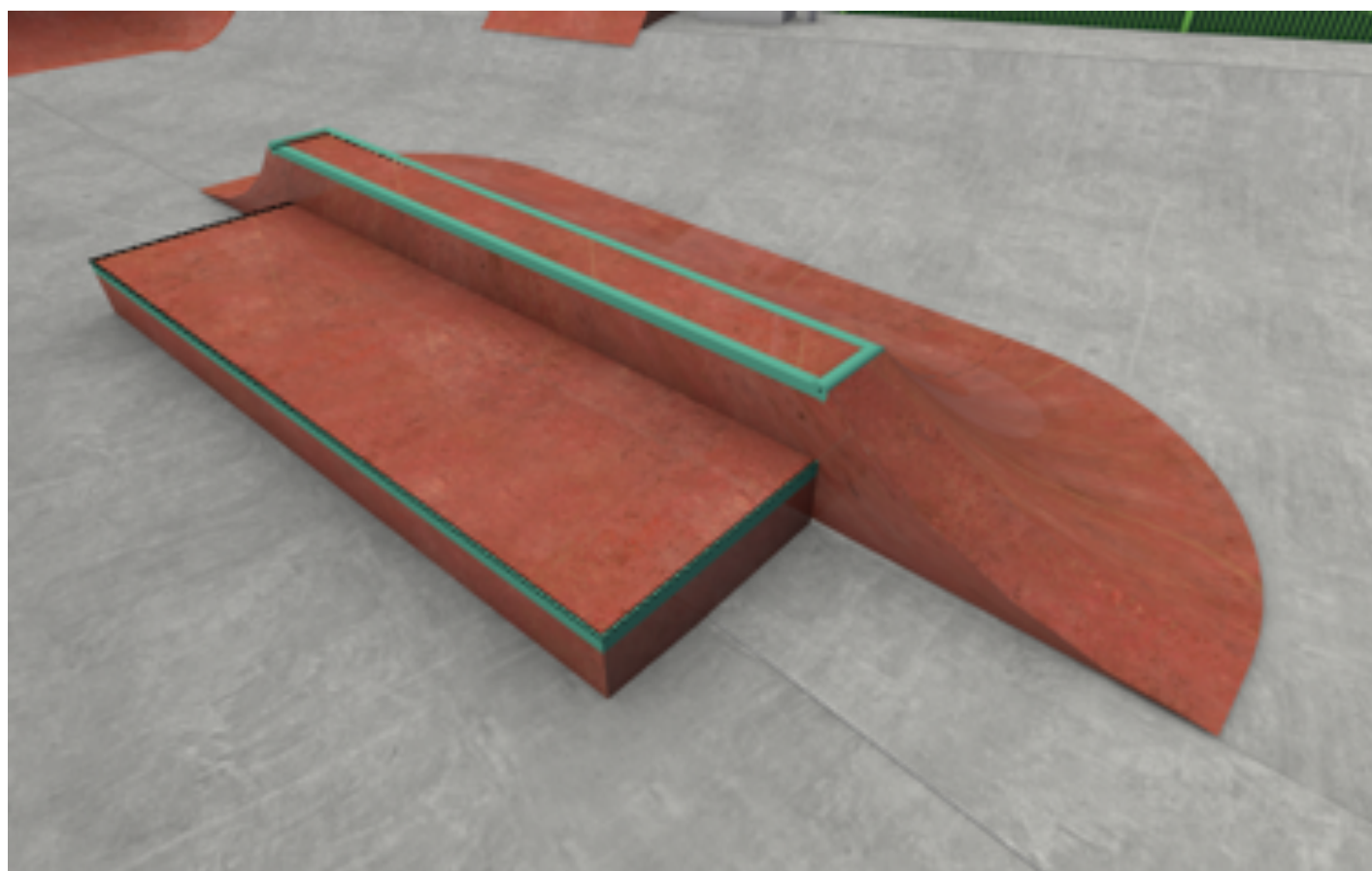
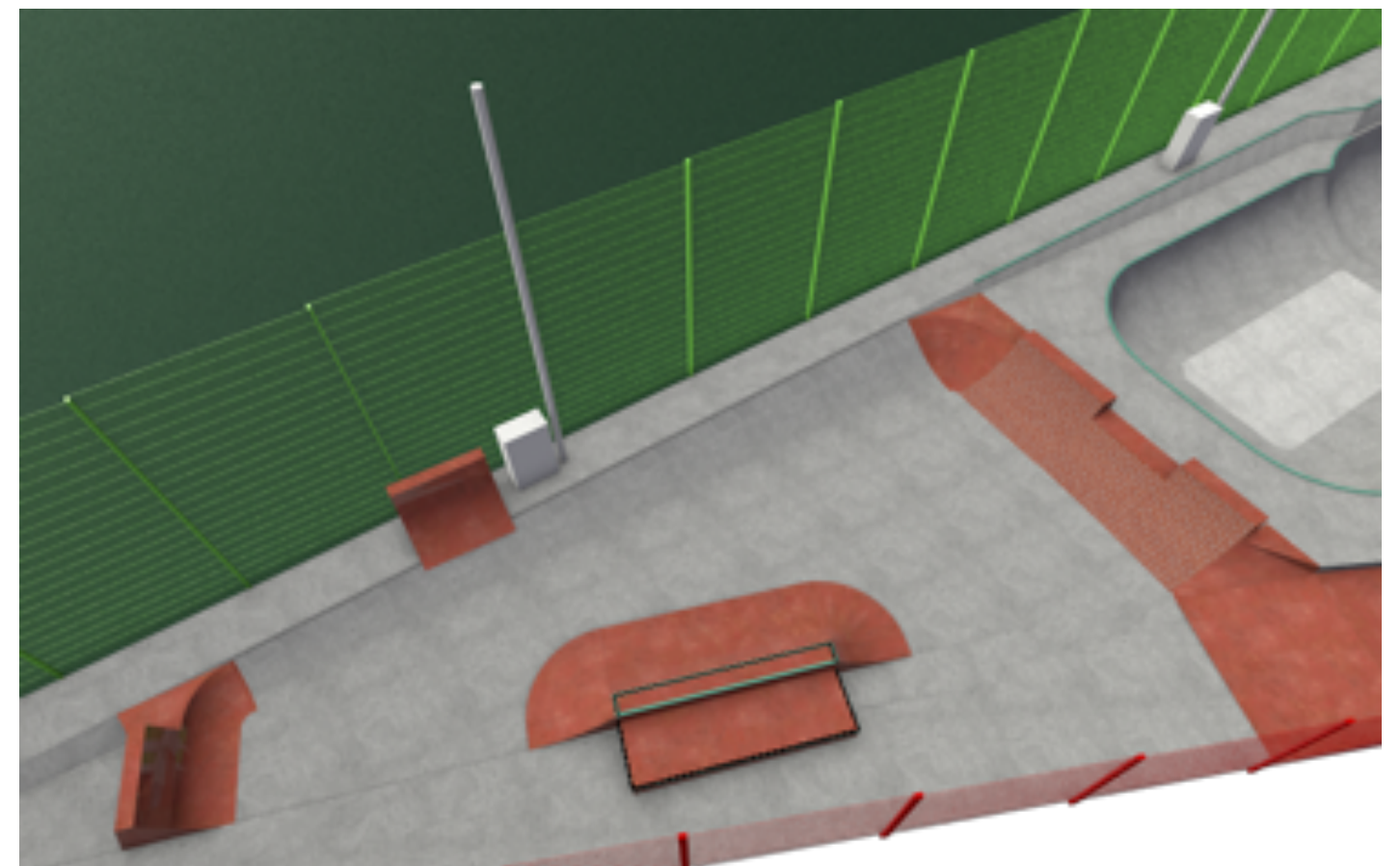
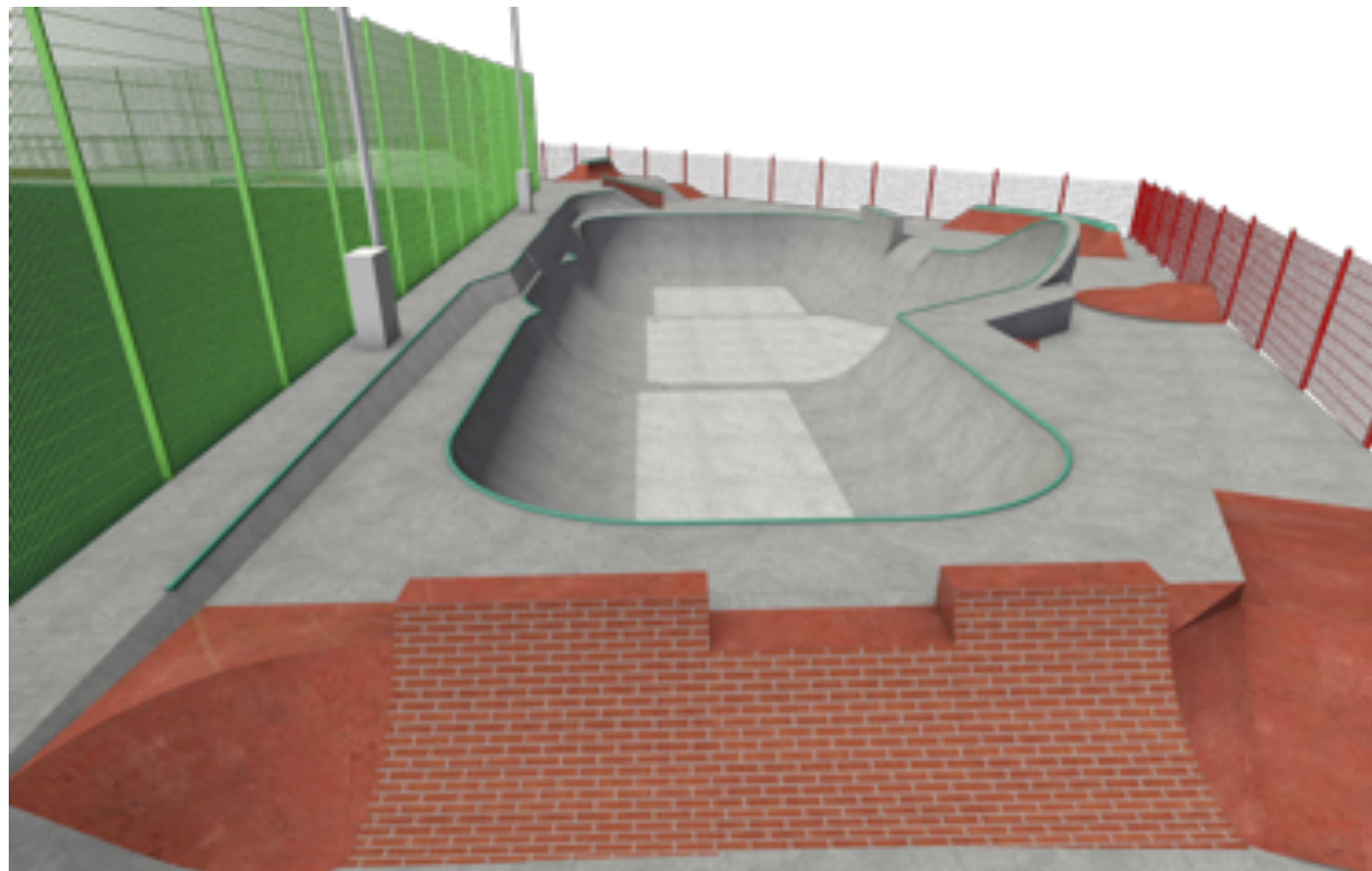
Developed Proposals - driveway works (*above*), new wedge features (*top right*) and manny/ledge combo block (*above*)



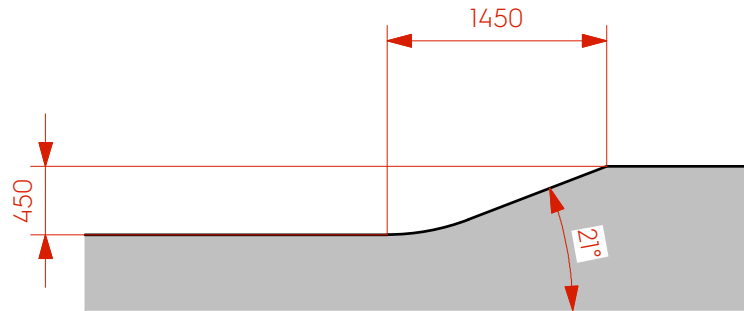
Developed Proposals - pyramid rebuild (*above*), with Hubba (*top right*) and *Tranny Banana* and pump bump (*bottom right*)



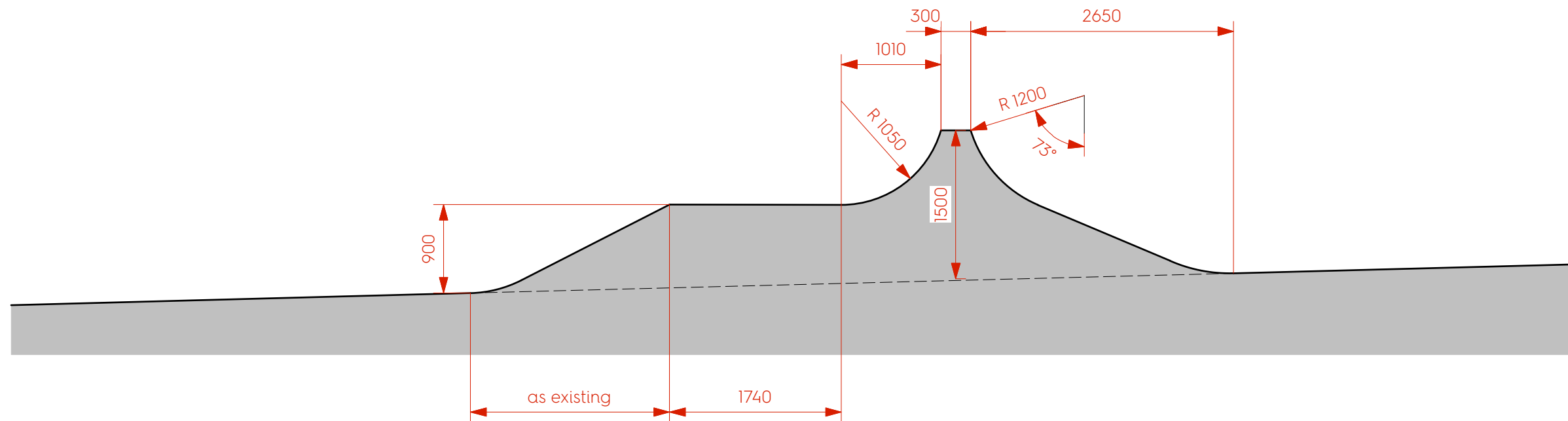
Developed Proposals - kite bank, pump bump and *tranny banana* features from engagement discussions on site (*top-row*) and *DIY* area with relocated micro-mini and optional hip (*bottom row*)



Developed Proposals - *DIY*-style area with retained brick printed concrete (*top left*), driveway (2.1m wide) tombstone extension (*bottom row*) and return quarter pipe. NB: gate location as existing with 2.5m from ramps.



Proposed hip in *DIY* area



Proposed pyramid Section

All drawings and written material are the sole property of the architect and may not be duplicated, published, disclosed or used without express written consent.

Drawings are not to be used for construction purpose unless marked as such. Do not scale from this drawing for construction purposes. All critical dimensions to be verified on site and any discrepancies to be reported to the architect before work is put in hand.

© all copyrights reserved



Jeremy Donaldson
rolling studio

@rolling.studio
+44 7729 809 906
jdonaldsonarchitect@icloud .com

DATE	22.05.2019	JOB ID	016-10
SCALE	1:50	STATUS	information
PROJECT	Cantelowes Skatepark		
DRAWING	Detail Sections		
DRAWING No.	SK/190522/01	Rev.	

Features Key:

Skatepark Modifications & Additions (in red highlighting)

- A - Toothpick - 750mm high, tranny to 70° bank, 1.2m wide plus blend to bank;
- B - Tombstone - transition extension to bank; 900mm high, R1.5m transition, 1.5m wide;
- C - Manual Pad - 3m long, 900mm wide, 250mm high, 50mm x 8mm steel edge;
- D - Rebuilt *Mudchute* micro-quarter pipe - 3m wide plus rounded hips, 500mm high, R1.7m as existing.
- E - Brick Stenciled RC Quarterpipe - 550mm high, R. 1.5m transistion, 4.7m wide.
- F - Extensions to Brick QP - 300mm above platform / 850mm overall, 1.8m wide each, with 1.8m gap;
- G - Driveway beside ledge of bowl - 350mm high, 1.2m top, 15° banks with blend; (walkable)
- H - Banked infill to corner ledges - 18° bank with blend, stopped 100m below ledge at peak, 3.8m wide (max.);
- I - Pump Bump - ollie profile
- J - Curved Tranny Ledge - 7.5m long, 750mm high, hand-shaped parabolic transiton
- K - Hubba Ledge - 2.65m lpng, 450m wide, 450/600mm high
- L - Double Pump Bump - roller profile, 2m wide, 0.5m high
- M - Rebuilt bank with transition extensions - 1.8m high
- N - Ledge with Wallie Ends - 450mm high, 2.2m long
- O - Driveway - rebuilt with shorter top - 1.5m gap (500mm shrter than existing)
- P - *DIY* style micro-tranny - ride over blend added to foot of existing wall ride bank
- Q - Wedge - sloped extension to bank
- R - Manny/Ledge Combo Block - 3m x 1.2m x 270mm pad and 4.2m x 450mm x 420mm high ledge

Repairs:

All defects to concrete to be repaired with Ardex repair mortar - key areas noted 'rp', underpinning to main hip, and bowl floors to be ground smooth with diamond polisher.

safety barrier to be refitted to provide 1.2m high guarding above deck level

