

Date: 11/10/2019
Our reference: PS_01/Chetwynd_Rd/ML
Email: maxim.lyne@camden.gov.uk

Transport Strategy
Supporting Communities
London Borough of Camden
Town Hall
Judd Street
London
WC1H 9JE
Phone: 020 7974 1665
camden.gov.uk

Dear resident/stakeholder

Chetwynd Road and Grove Terrace

Cycle access improvements

We are writing to inform you of the Council's proposal to improve cycling access in Chetwynd Road and Grove Terrace. This is in line with the council's goals of encouraging non-polluting forms of transport and healthier ways of getting about, particularly walking and cycling.

Proposed changes

We are proposing to create a shared space area on the footway on the northern side of Chetwynd Road to form a cycle access point between Chetwynd Road and Grove End, and a similar measure between Grove Terrace and Grove End.

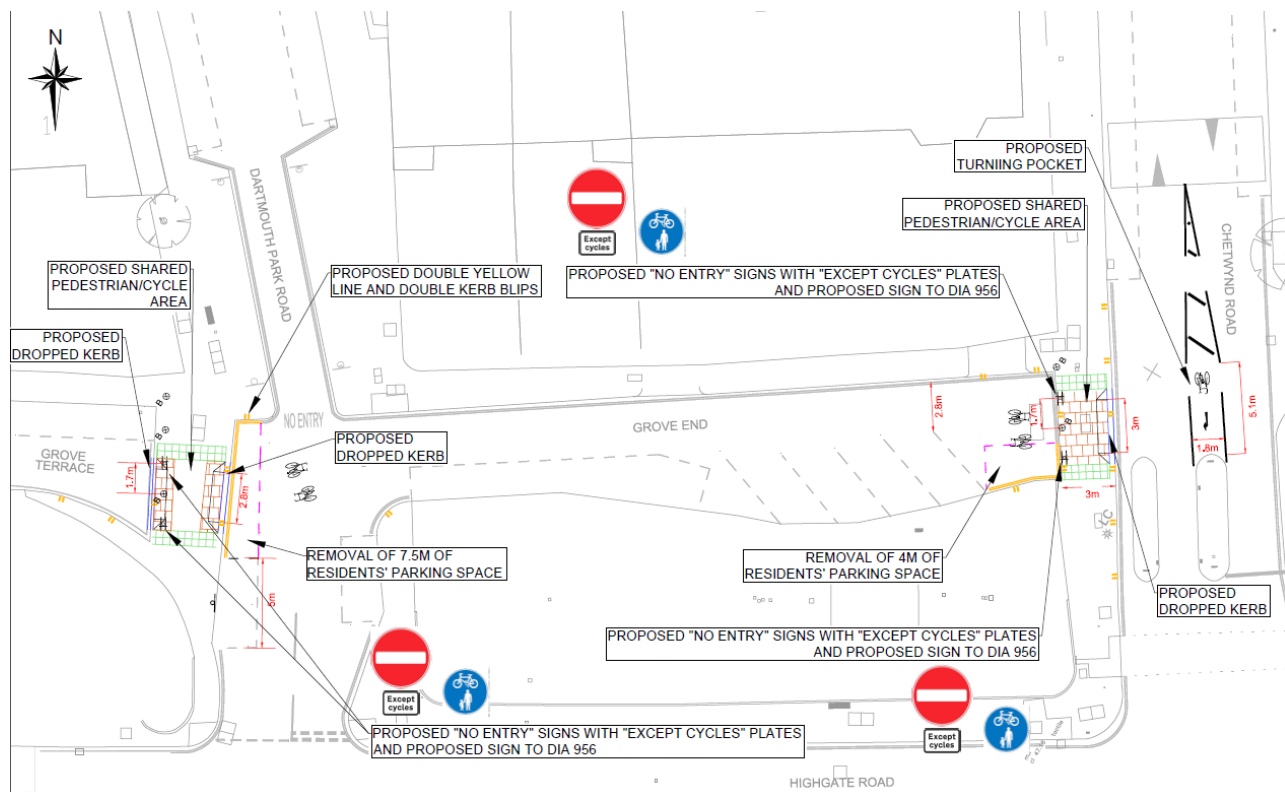
Both measures will allow cycle access across the footway, and are intended to maintain pedestrian priority, which will mean that cyclists will have to give way to pedestrians. The measures will be provided by retaining the existing bollard arrangement with no entry signs positioned on either side.

The Chetwynd Road – Grove End measure will permit a number of movements that will lead to safer passage through the area for cyclists. The measure will provide eastbound cyclists wishing to head northeast with a safer alternative to having to turn right from Highgate Road into Dartmouth Park Road. The measure will also allow westbound cyclists to head North on Highgate Road. A right-turn pocket is proposed on Chetwynd Road to aid northbound cycle movement from Chetwynd Road.

The Grove Terrace – Grove End measure will complement the above measure and will enable direct access between Grove Terrace and Dartmouth Park Road.

The total resident parking loss for both measures would be two bays, one in each location. This is necessary to allow safe access to the measures. Both measures are shown in the drawings below.

Grove Terrace – Grove End and Chetwynd Road – Grove End measures



The Council welcomes your views on the proposals as well as any alternative suggestions or objections that you may have.

HOW TO RESPOND

Please submit your response to this consultation no later than November 1st 2019 via one of the following two options below:

Option 1 Email – submit your response via email to: maxim.lyne@camden.gov.uk

Option 2 Post – submit your response using the following **free post address** (no stamp required) to Transport Strategy Service, FAO Max Lyne, 5th Floor, 5PS, **FREEPOST RSLT-RJBR-TXAA**, London Borough of Camden, Town Hall, Judd Street, London, WC1H 9JE.

Please Note: if you are responding on behalf of an organisation, only **ONE** reply will be accepted. You **must** give your full postal address when responding to the consultation if you want us to consider your views.

Who is being consulted?

All properties on Grove Terrace and Grove End are being consulted, and those in the immediate vicinity on Chetwynd Road, along with local and statutory groups, emergency services and ward councillors.

An Equality & Diversity form has been included that can be completed voluntarily and sent to us with your response via email or using free post address as outlined above. Any information you provide on this form will help us in making an informed decision on the scheme.

While it may not be possible to reply to individual comments, all comments will be taken into account. At the end of the consultation period, officers will consider all responses received, these will be outlined in a decision report along with recommendations. This report will be presented to the Director of Regeneration and Planning (Supporting Communities Directorate) who will make a decision whether or not to proceed with implementing the proposals.

Under the Local Government Access to Information Act 1985, your consultation response will be available for inspection if required; however, your personal details will remain confidential. Please only write to us with matters associated with this consultation. If you do have any further questions or require clarification about the proposed scheme, please do not hesitate contact me on the above contact details.

Yours faithfully,

Max Lyne

**Principal Transport Planner, Public Realm and Planning team
Transport Strategy Service**