

Important - Public Consultation

This is your opportunity to comment on the Council's plans

This is a postal and on-line consultation

The French School

Proposed Parking Measures

Camden Council would like to improve safety for children crossing Willes Road on their way to and from The French School and other nearby schools. Council officers have visited the location along with Ward Members, the Inkerman Road Residents' Association, and with the school's representatives to come up with a solution to the problems that pupils and pedestrians encounter when trying to cross this road. Officers have observed parents as well as the school buses used by The French School parking on the single yellow line on Willes Road, outside the public house. This restricts visibility for pedestrians wanting to cross Willes Road at the junction with Holmes Road, and results in pedestrians having to step out into the road to see approaching vehicles.

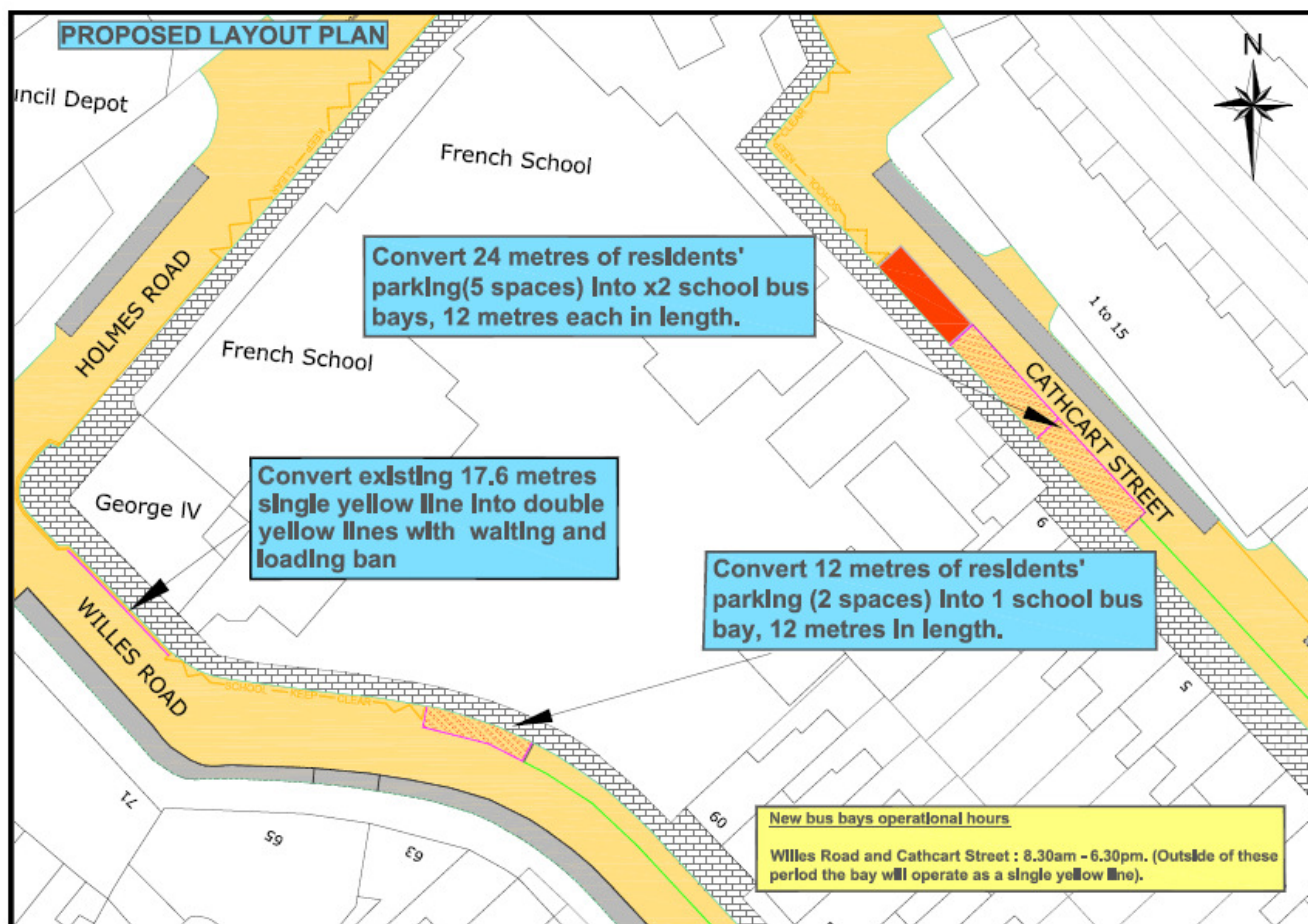
We are also aware that the school uses both minibuses and larger coaches to drop off/pick up school children at the beginning and end of the school day as well as transporting them for extracurricular activities. In order to allow the school buses to park in a safe place away from street corners, we undertook a survey to find out how many residents' parking bays are occupied during the day. This survey did indicate that a number of these parking spaces were not occupied during the day hence there is room to convert a number of these to provide parking for buses within the controlled hours.

We are proposing changes which should meet the needs of the school in terms of pupil safety and a safe place to park their school buses without taking away parking that is currently being used by residents to park in. There will be an overall loss of 7 residents' parking spaces as a result of these proposals; however residents will be able to park in these spaces after 6.30pm and before 8.30am. The following is therefore proposed:

1. Provide two new 12 metre bus bays in Cathcart Street by converting 24 metres of existing residents' parking bay on Cathcart Street. **(Residents' will be able to parking in these parking bays after 6:30pm). Each 12metre space will be able to accommodate one large coach or two minibuses.**
2. One new 12 metre school bus bay in Willes Road by converting 12 metres of the existing residents' parking bay on Willes Road. **(Residents will be able to park in these parking bays after 6:30pm). The 12metre space will be able to accommodate one large coach or two minibuses.**
3. Conversion of 17.6 metres of single yellow line at Willes Road near its junction with Holmes Road into double yellow lines with a ban on waiting & loading.

The drawing overleaf illustrates the proposed footway and associated parking measures.

If agreed, the works will be undertaken before the end of March 2013. All works if approved will be funded by Transport for London.



This is your opportunity to comment

We need your views as this consultation exercise is intended to find out if there is broad public support for the proposals set out in this leaflet.

Please send your comments by the **14 December 2012** to: **London Borough of Camden, Culture and Environment Directorate, Transport Strategy Service, RSLT-RJBR-TXAA, Town Hall, Judd Street, London WC1H 9JE.** Please note no stamp is required and only **ONE** reply per household, business or organisation will be accepted. **You must give your postal address if you want us to consider your views.** Alternatively, you can send your response by email to chris.g.smith@camden.gov.uk.

While it will not be possible to reply to you individually, all comments will be taken into account. The Assistant Director of Environment and Transport will make a decision whether or not to proceed with the scheme. Details of this consultation are also available on the Council's website, www.camden.gov.uk/consultations.

Under the Local Government (Access to Information) Act 1985, your response is available for public inspection. Please only write to us about the consultation issue.

Who is being consulted?

All affected property frontages and businesses on Willes Road and Cathcart Street, local and Statutory Groups, Emergency Services and Ward Members.

For further information please contact:

Chris Smith
Design Engineer
Transport Strategy Service
London Borough of Camden
Tel: 020 7974 3085
chris.g.smith@camden.gov.uk

Simi Shah
Design Team Manager
Transport Strategy Service
London Borough of Camden
Tel: 020 7974 2066
simi.shah@camden.gov.uk

Thank you for replying to this consultation