

Summer Update – Improving the green spaces on your doorstep

● Augustus House

In March 2019 Groundwork worked with Camden Council to find out what types of improvements you might like to see in your local green spaces and gardens. There were 6 areas we looked at which are marked on the plan. You shared your ideas via e-mail, telephone and by coming to one of our engagement events.



We listened carefully to your ideas and priorities. Based on what you have told us we have developed designs for each space and are now able to share these with you.

To make sure you are getting the green spaces that best suit your needs please let us have any feedback on the designs by 5th August 2019 .

You can do this by contacting us:
greenspaces@groundwork.org.uk or
tel **07525 703 357** or come and talk to us at the next engagement stalls.
We will be showcasing all the designs at the stalls.

When:

Friday 26th July	4.30 - 7.30pm
Saturday 27th July	1.30 - 7.30pm
Tuesday 30th July	5.30 - 8.30pm

Where:

By the carpark in front of the:
White Mustache Pub
7A Stanhope St NW1 3RD

Please see the designs for the spaces around Augustus House.

If you would like to see all the designs please go to: <https://consultations.wearecamden.org/groundwork/greenspaceimprovements> or contact us and we can send you a copy.

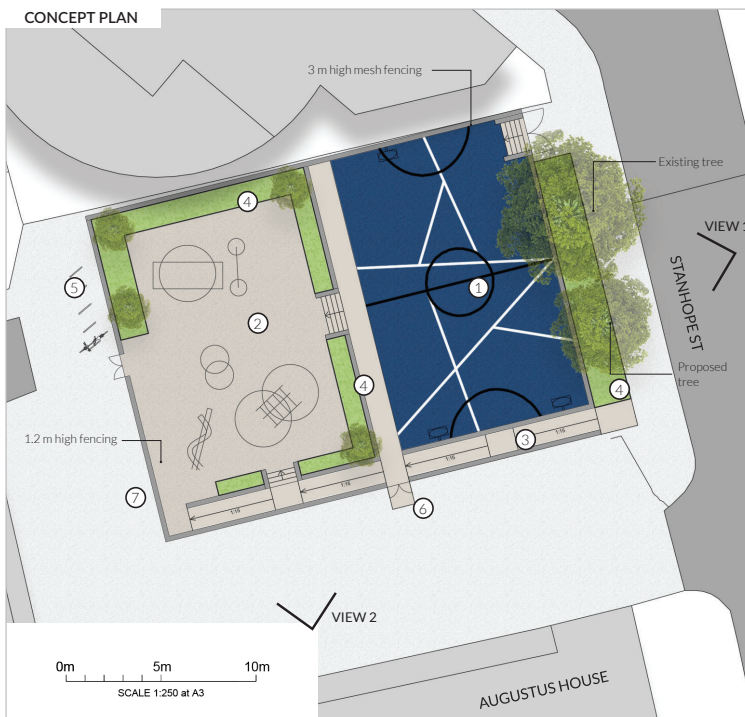
What will happen next?

When will improvements be carried out?

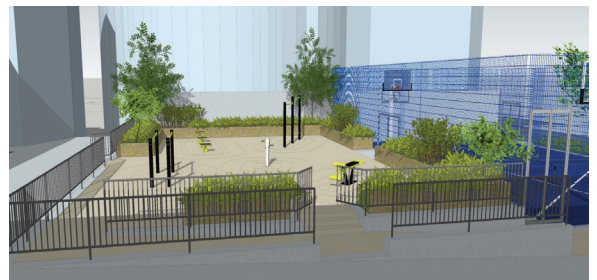
Based on residents' comments we will finalise the designs over the summer months and share these with you in the autumn with the intention to start works early 2020. We will keep you updated via newsletters and posters.

AUGUSTUS HOUSE MUGA / BALL COURT

CONCEPT PLAN



VISUALISATIONS



The design shows that the pitch will be divided into two areas with a lower and upper level. The lower level along Stanhope Street will be retained as a ball court and the upper area as an outdoor gym.

1. New kick-about/Hoops area
2. Outdoor Calisthenics gym
3. Proposed ramped access
4. Soft landscaping
5. Proposed cycle parking
6. Vehicle maintenance gates

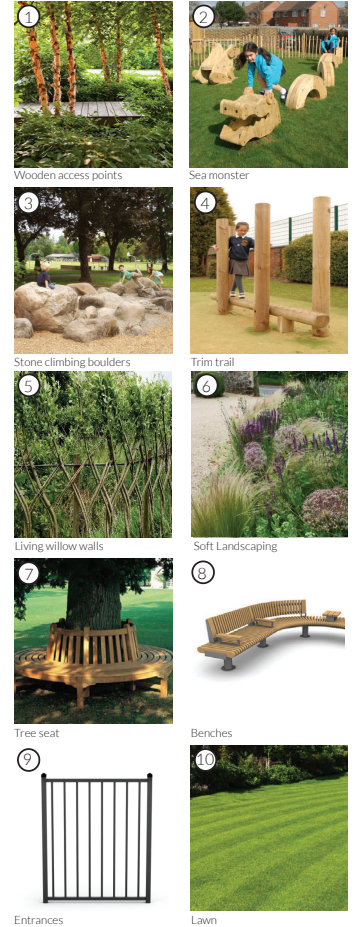
Residents asked us to:	How we addressed residents' priorities:
<ul style="list-style-type: none"> • Address the slope • Retain space for games and play • Make it feel lighter and brighter 	<ul style="list-style-type: none"> • Created two areas, on two levels, providing a range of opportunities for sport, fitness and play. • The surface and walls are brightly painted. • Improved planting to further brighten up the space.

AUGUSTUS HOUSE GARDEN



The Augustus House Garden design shows how this area will be transformed into an attractive, natural play and garden space for young children & families, including informal play features such as balance beams, stepping logs and stone boulders. It also includes a composite wood walkway and seating.

EXAMPLE IMAGES:



Residents asked us to:	How we addressed residents' priorities:
<ul style="list-style-type: none"> • Make it a nicer place to relax and play • Create an under fives informal play area • Keep some planting near to residents flats • Create a dog free area • Create good access to the garden and renew railings 	<ul style="list-style-type: none"> • Colourful and sensory planting around the outside of the space • Informal play elements • New railings and gates