

Autumn Update – Improving the green spaces on your doorstep

● Augustus House

In June 2019 we invited local residents to share their views on new concept designs for local green spaces and gardens at Augustus House. Residents shared their ideas on the concepts and how these green spaces could be improved.



Based on what you told us we have now refined the concepts and are pleased to share the final designs with you.

If you would like any additional information on these designs please contact us by emailing or calling

✉ greenspaces@groundwork.org.uk

📞 Sandra Hoisz - 0207 278 1514

Please see the designs for the spaces around Augustus House.

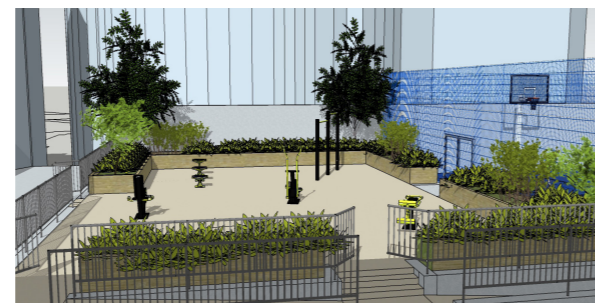
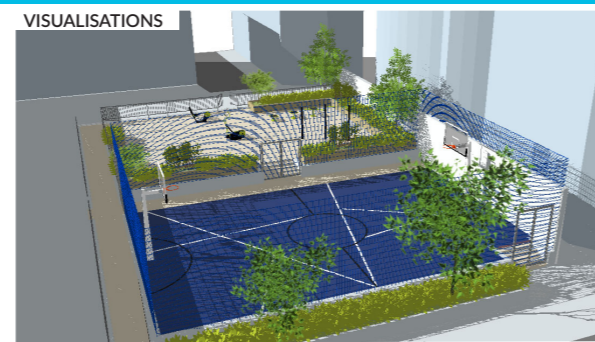
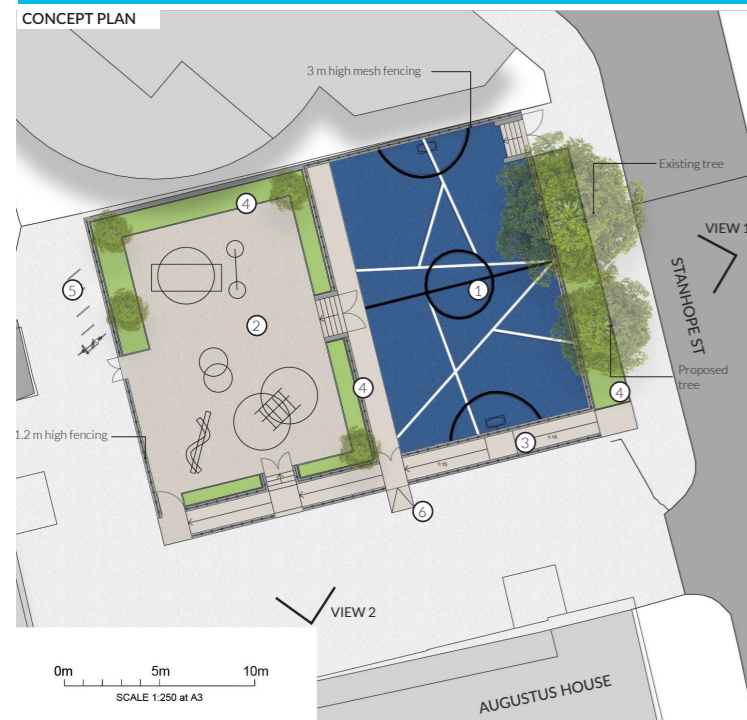
If you would like to see all the designs please go to: <https://consultations.wearecamden.org/groundwork/greenspaceimprovements> or contact us and we can send you a copy.

What will happen next?

When will improvements be carried out?

The construction works are due to start early 2020. We will keep you updated via newsletters and posters.

AUGUSTUS HOUSE MUGA / BALL COURT

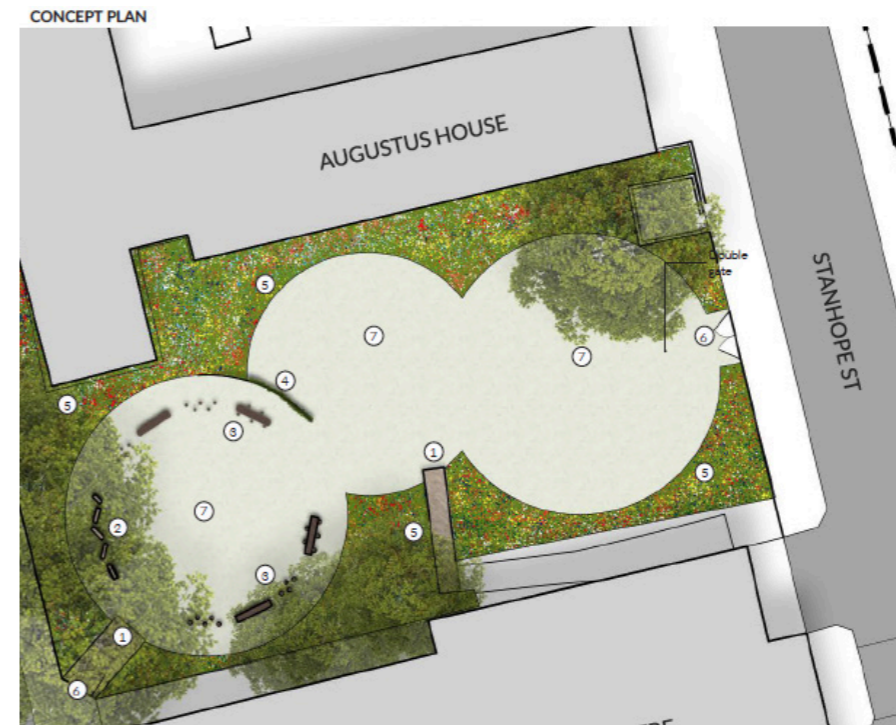


1. New kick-about/hoops area
2. Outdoor calisthenics gym
3. Proposed ramped access
4. Soft landscaping
5. Proposed cycle parking
6. Vehicle maintenance gates

The design shows that the pitch will be divided into two areas with a lower and upper level. The lower level along Stanhope Street will be retained as a ball court and the upper area as an outdoor gym.

Residents asked us to:	How we addressed residents' priorities:
<ul style="list-style-type: none"> • Address the slope • Retain space for games and play • Make it feel lighter and brighter 	<ul style="list-style-type: none"> • Created two areas, on two levels, providing a range of opportunities for sport, fitness and play. • The surface and walls are brightly painted. • Improved planting to further brighten up the space.

AUGUSTUS HOUSE GARDEN



The Augustus House Garden design shows how this area will be transformed into an attractive, natural play and garden space for young children & families, including informal play features such as balance beams, stepping logs and stone boulders. It also includes a composite wood walkway and seating.

Residents asked us to:	How we addressed residents' priorities:
<ul style="list-style-type: none"> • Make it a nicer place to relax and play • Create an under fives informal play area • Keep some planting near to residents flats • Create a dog free area • Create good access to the garden and renew railings 	<ul style="list-style-type: none"> • Colourful and sensory planting around the outside of the space • Informal play elements • New railings and gates