

# Autumn Update – Improving the green spaces on your doorstep

## Hawkshead, Harrington & Kirkstone

In June 2019 we invited local residents to share their views on new concept designs for local green spaces and gardens at Hawkshead, Harrington and Kirkstone.



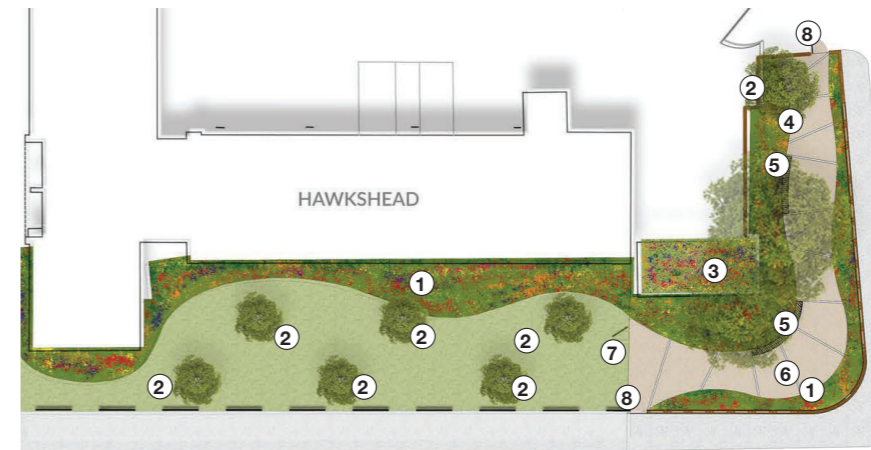
Based on what you told us we have now refined the concepts and are pleased to share the final designs with you.

If you would like any additional information on these designs please contact us by emailing or calling

[greenspaces@groundwork.org.uk](mailto:greenspaces@groundwork.org.uk)

Sandra Hoisz - 0207 278 1514

### HAWKSHEAD HOUSE GREEN SPACE (VARNDELL ST)



The Hawkshead House green space (Varndell St) will be improved through attractive and colourful low level planting. The design shows a new pocket park consisting of bespoke paving and new planting.

1. Low level planting
2. Ornamental trees
3. Green roof
4. Pocket Park
5. Benches
6. Bespoke paving
7. New railing and gated access point
8. New gate

VISUALISATIONS



#### Residents asked us to:

- Improve the planting
- Plant more trees
- Design out rat holes and areas to hide drugs and rough sleeping

#### How we addressed residents' priorities:

- Colourful low level planting for visual appeal
- Improve visibility and encourage residents to use the space to deter anti social behaviour/ rough sleeping
- New pocket park on the corner of Vardell Street combing paving and planting

Please see the designs for the spaces around Hawkshead, Harrington and Kirkstone.

If you would like to see all the designs please go to: <https://consultations.wearecamden.org/groundwork/greenspaceimprovements> or contact us and we can send you a copy.

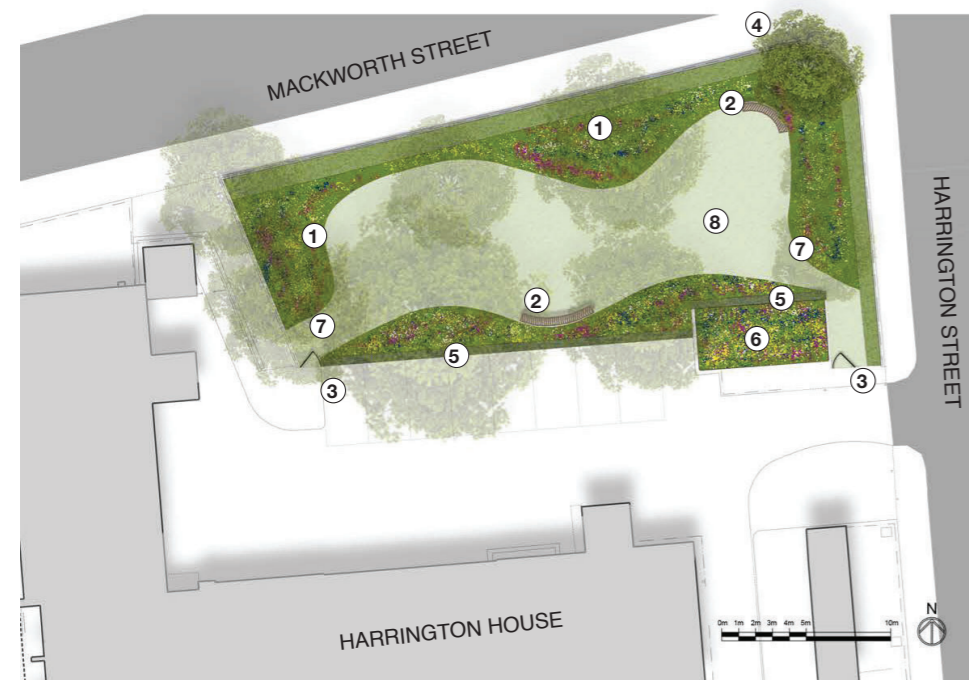
### What will happen next?

### When will improvements be carried out?

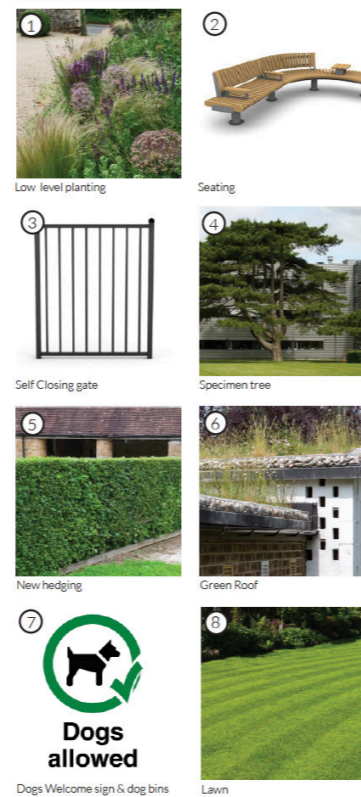
The construction works are due to start early 2020. We will keep you updated via newsletters and posters.

## HARRINGTON AND KIRKSTONE GREEN SPACES

### CONCEPT PLAN



#### EXAMPLE IMAGES:



**Harrington House green space (Mackworth Street)** will be improved by adding varied and colourful planting, including a low hedge next to the car park. The design shows a green roof on top of the bin store and a new bin.

Residents asked us to:	How we addressed residents' priorities:
<ul style="list-style-type: none"> <li>• Improve this area for dog walkers</li> <li>• Make it more accessible</li> <li>• Make it lighter</li> </ul>	<ul style="list-style-type: none"> <li>• Plant a low hedge to create a boundary between the green space and the car park</li> <li>• Attractive and colourful planting, including 1 new tree.</li> </ul>

## KIRKSTONE, HARRINGTON AND HAWKSHEAD

### CONCEPT PLAN



### VISUALISATIONS



1. Rose arbours
2. Shallow wildlife pond
3. Basket swing
4. Tree Seat
5. New primary circulation path
6. New planting beds incorporating existing roses
7. Food growing
8. Espallier fruit trees
9. Fencing

The green space between **Kirkstone, Harrington and Hawkshead** will be transformed into a well being garden for quiet, informal recreation and relaxation. We are improving access by adding a new path. Adding planting, a pond and wildlife features to create a haven for people and wildlife alike.

Residents asked us to:	How we addressed residents' priorities:
<ul style="list-style-type: none"> <li>• Retain as a quiet garden sanctuary</li> <li>• Improve the area for wildlife</li> <li>• Install more features, like rose arbours</li> <li>• Enhance the garden for older people to enjoy</li> <li>• Retain the hedges</li> <li>• Use natural materials where possible</li> <li>• Provide opportunities for food growing</li> </ul>	<ul style="list-style-type: none"> <li>• We have made the garden easier to access and enjoy by older people by adding a pathway and 2 new entrances.</li> <li>• We are improving the area for wildlife by adding a small pond and bug hotel.</li> <li>• We have added some raised beds for food growing</li> <li>• We will install rose arbours</li> <li>• Plant new trees</li> </ul>