

Introduction

This exhibition and workshop is being held to get your input into the design of replacement homes on the Regent's Park Estate and to help establish a community vision for the future.

What we're looking at today:

HS2 Replacement Homes

- Meet the architects who are designing the HS2 replacement homes.
- See the latest design ideas and tell us what you think.

Your Community Vision

- Contribute towards establishing a community vision and tell us about your priorities for the area.
- See early ideas of possible locations for new homes for local people.

What you can do today:

- Talk to the architects about the more detailed design ideas for replacement homes and the open spaces around them.
- Give us your views on the community vision and fill in a feedback form. Tell us if we're on the right track or if we've missed anything important to you.
- Give us your views on possible opportunities for new homes on the estate.

Your Community Vision

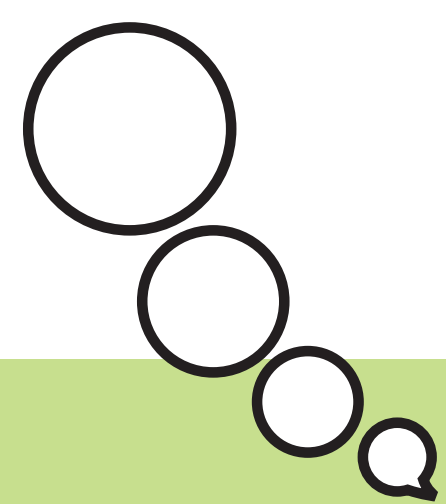
Please tell us about your priorities.

From previous consultations many of you told us there should be a longer term plan for the Regent's Park Estate. This consultation is the first step in the process and we will continue to include you in making decisions along the way. You have told us these are some of your priorities for the estate. Please confirm if we are on the right track and tell us which ones are most important to you.

Your Priorities		Which are your top five?
HOUSING	<ul style="list-style-type: none"> • More new affordable homes should be developed. 	
	<ul style="list-style-type: none"> • A local lettings policy should be in place so that local people benefit from new homes. 	
	<ul style="list-style-type: none"> • Homes should be well designed and sustainable. 	
COMMUNITY & SAFETY	<ul style="list-style-type: none"> • Improve the quality of community spaces. 	
	<ul style="list-style-type: none"> • Encourage all people to make good use of facilities. 	
	<ul style="list-style-type: none"> • New buildings and spaces should be designed with community safety in mind. 	
OPEN SPACE & PLAY	<ul style="list-style-type: none"> • Open spaces should be enhanced across the estate to meet local needs. 	
	<ul style="list-style-type: none"> • Spaces should be well designed and easy to maintain. 	
	<ul style="list-style-type: none"> • Better pedestrian routes should be provided. 	
QUALITY OF LIFE	<ul style="list-style-type: none"> • Promote healthy active lifestyles, especially for young people and the elderly. 	
	<ul style="list-style-type: none"> • Create attractive places where people can feel safe, come together and relax. 	
	<ul style="list-style-type: none"> • Minimize impacts of construction on air quality, noise and traffic. 	
	<ul style="list-style-type: none"> • Provide opportunities for people to learn and develop their skills. 	

Anything else?

Have your say by completing questions on the feedback form.



Community Investment Programme

Possible Opportunities for New Homes

From previous consultations we understand people want more affordable homes in the local area. Here are some early ideas of locations for you to consider. We also welcome your suggestions for alternative sites.

Stanhope Street Parade has been identified as somewhere that could potentially be used to deliver a large amount of housing. **Bucklebury Podium** could be the site for a new children's centre. Construction of the new children's centre could start from 2016.

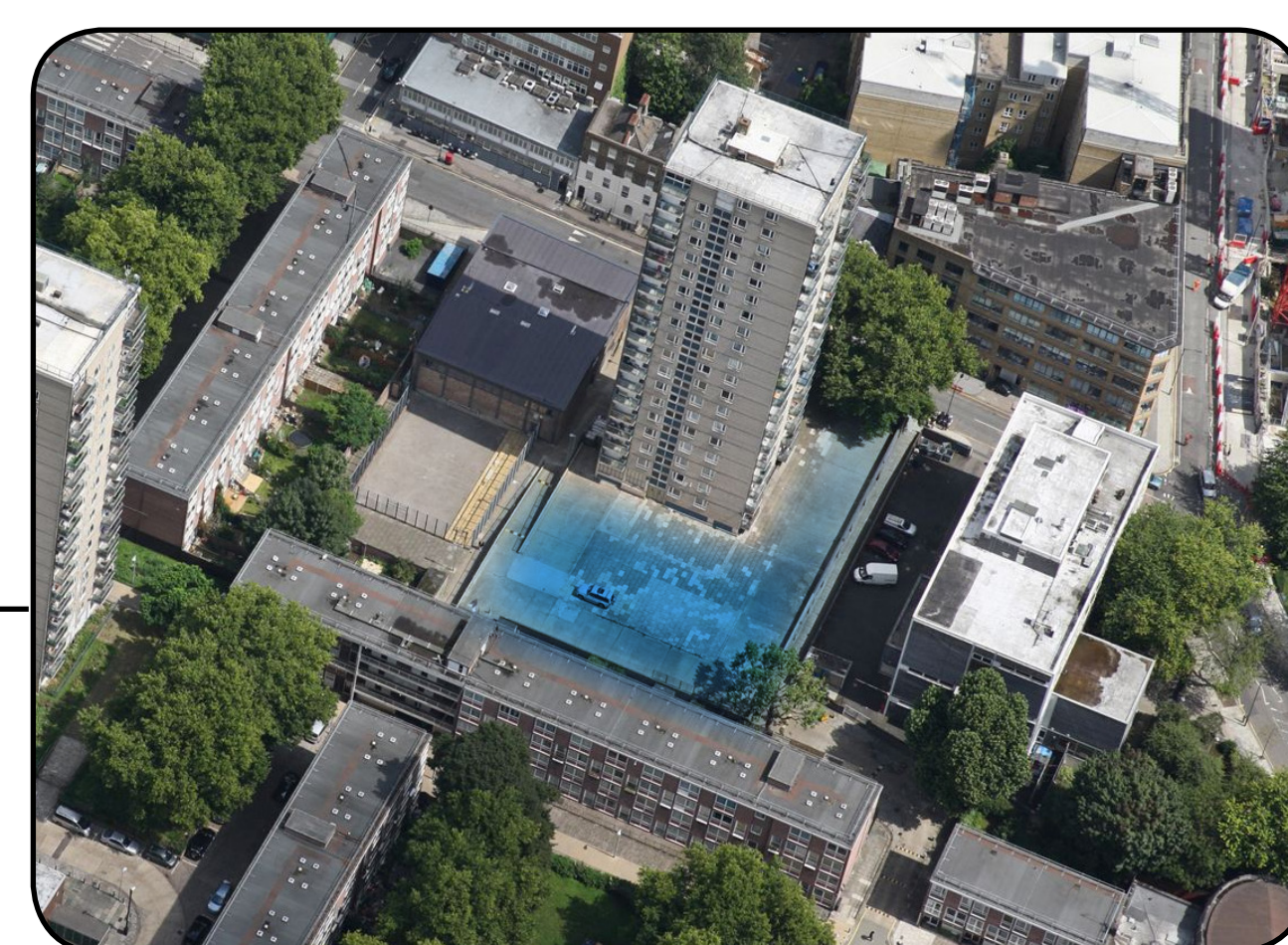


Do you think Stanhope Street Parade would be a good location for new homes?



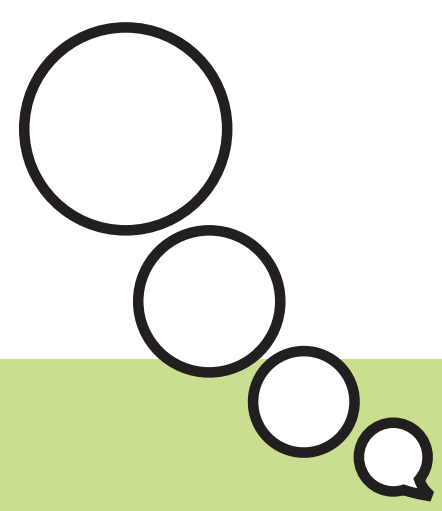
excellent	good	average	fair	poor

Do you think Bucklebury Podium would be a good location for the replacement Children's Centre?



excellent	good	average	fair	poor

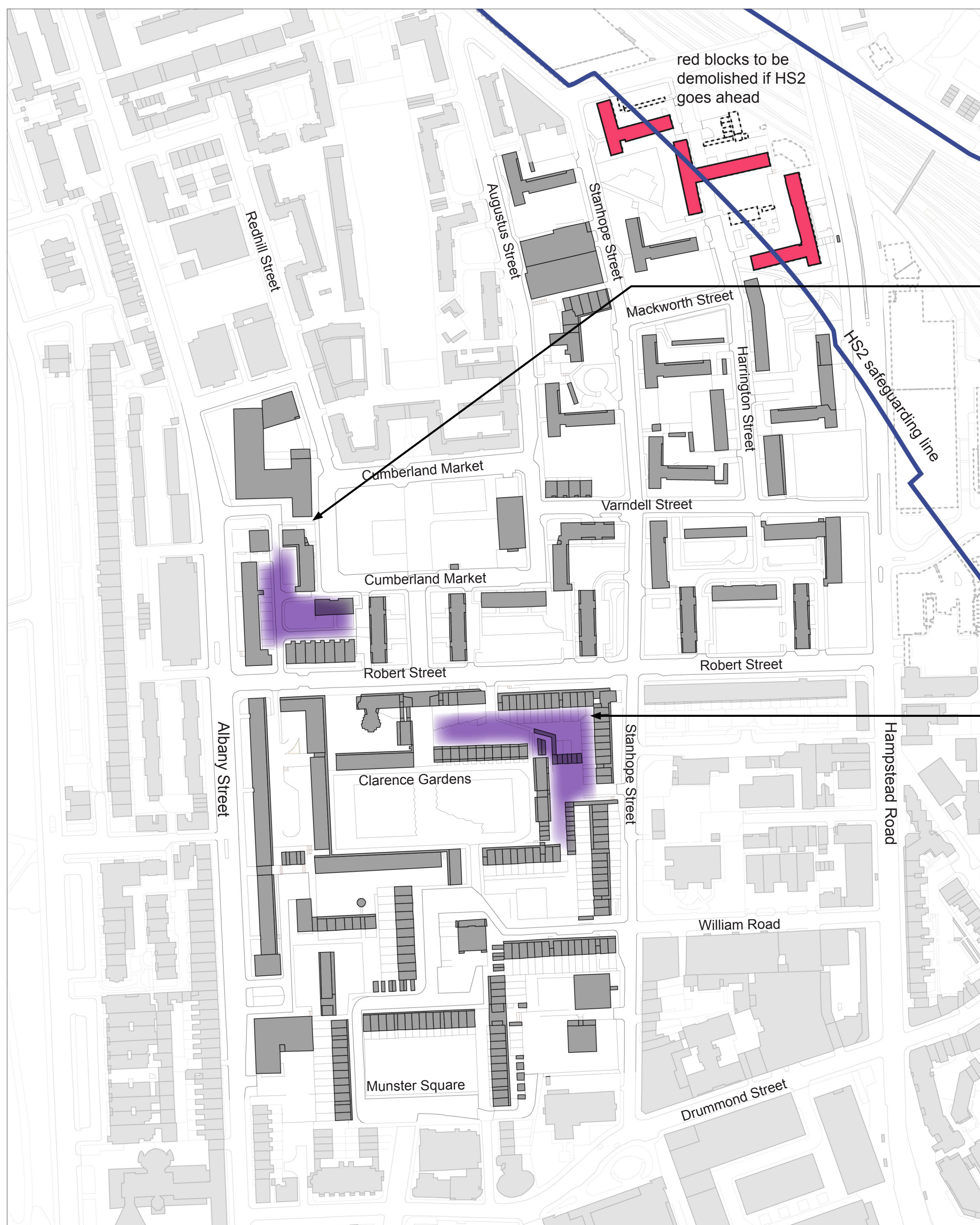
Have your say by completing questions on the feedback form.



Possible Opportunities for New Homes

From previous consultations we understand people want more affordable homes in the local area. Here are some early ideas of locations for you to consider. We also welcome your suggestions for alternative sites.

These areas between existing buildings could be used to provide new homes. Construction could start from 2018.



Do you think the area around Wasdale would be a good location for new homes?



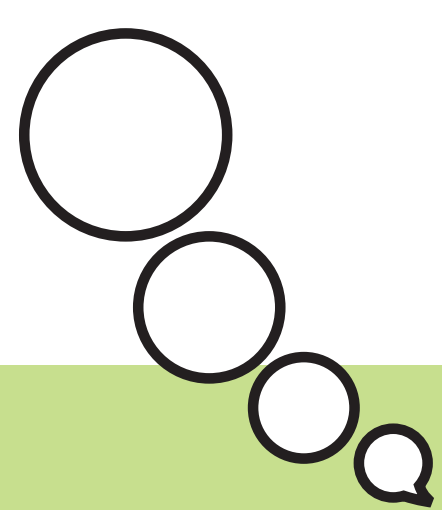
excellent	good	average	fair	poor

Do you think Englefield Mews would be a good location for new homes?



excellent	good	average	fair	poor

Have your say by completing questions on the feedback form.



Possible Opportunities for New Homes

From previous consultations we understand people want more affordable homes in the local area. Here are some early ideas of locations for you to consider. We also welcome your suggestions for alternative sites.

Longer term redevelopment opportunities. These areas of the estate could be redeveloped to provide a series of better quality spaces and more new homes. Construction could start from 2019.



Do you think Staveley and Newby would be a good location for new homes?



excellent	good	average	fair	poor

Do you think the area around Marlston would be a good location for new homes?



excellent	good	average	fair	poor

Have your say by completing questions on the feedback form.

