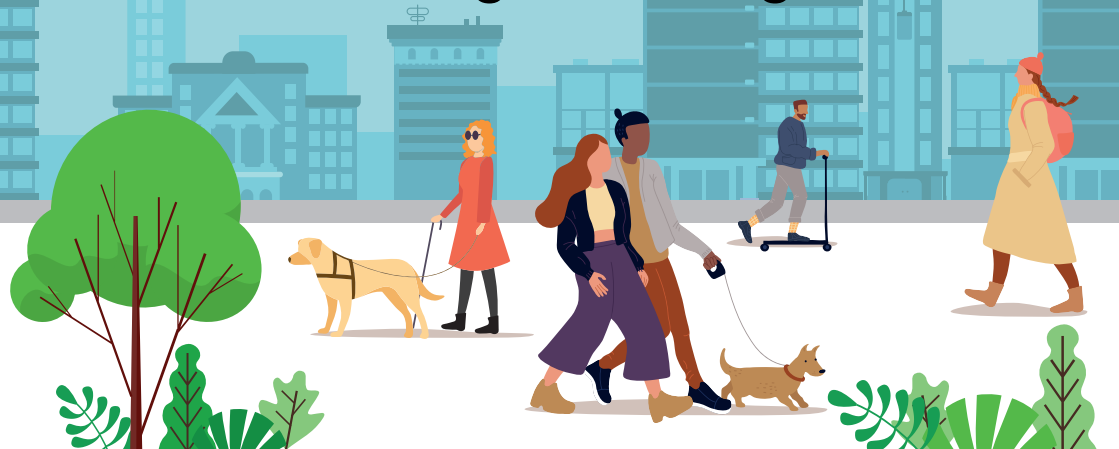


Your Safe and Healthy Streets - August 2022

Bedford Avenue

Permanent changes coming soon



Making your streets safer and healthier

In March 2022 we consulted on whether to make the trial changes on Bedford Avenue permanent to make it easier to travel by bike between Adeline Place and Bloomsbury Street. Thank you to everyone who shared their views. We have decided to make the following permanent changes:

- Keeping eastbound cycling between Adeline Place and Bloomsbury Street.
- Keeping traffic islands to separate eastbound cyclists at the junctions of Adeline Place/ Bloomsbury Street.
- Keeping waiting and loading prohibitions (double yellow lines with double kerb blips) at the junctions with Bloomsbury Street and Adeline Place.
- Permanent relocation of motorcycle and disabled parking, and removal of 4 resident permit holders only parking spaces.

We will also be making these new permanent changes by the end of the year:

- Installing a new bike hangar on Bedford Avenue to provide storage for 6 bikes.
- New road safety improvements for pedestrians and cyclists at the junction of Bedford Avenue and Bloomsbury Street.

Find out more

You can read the decision report and our feedback to the 9 consultation responses on our website, which you can access using the link below or the QR code. If you have any questions you can email safetravel@camden.gov.uk or call 020 7974 4444.

