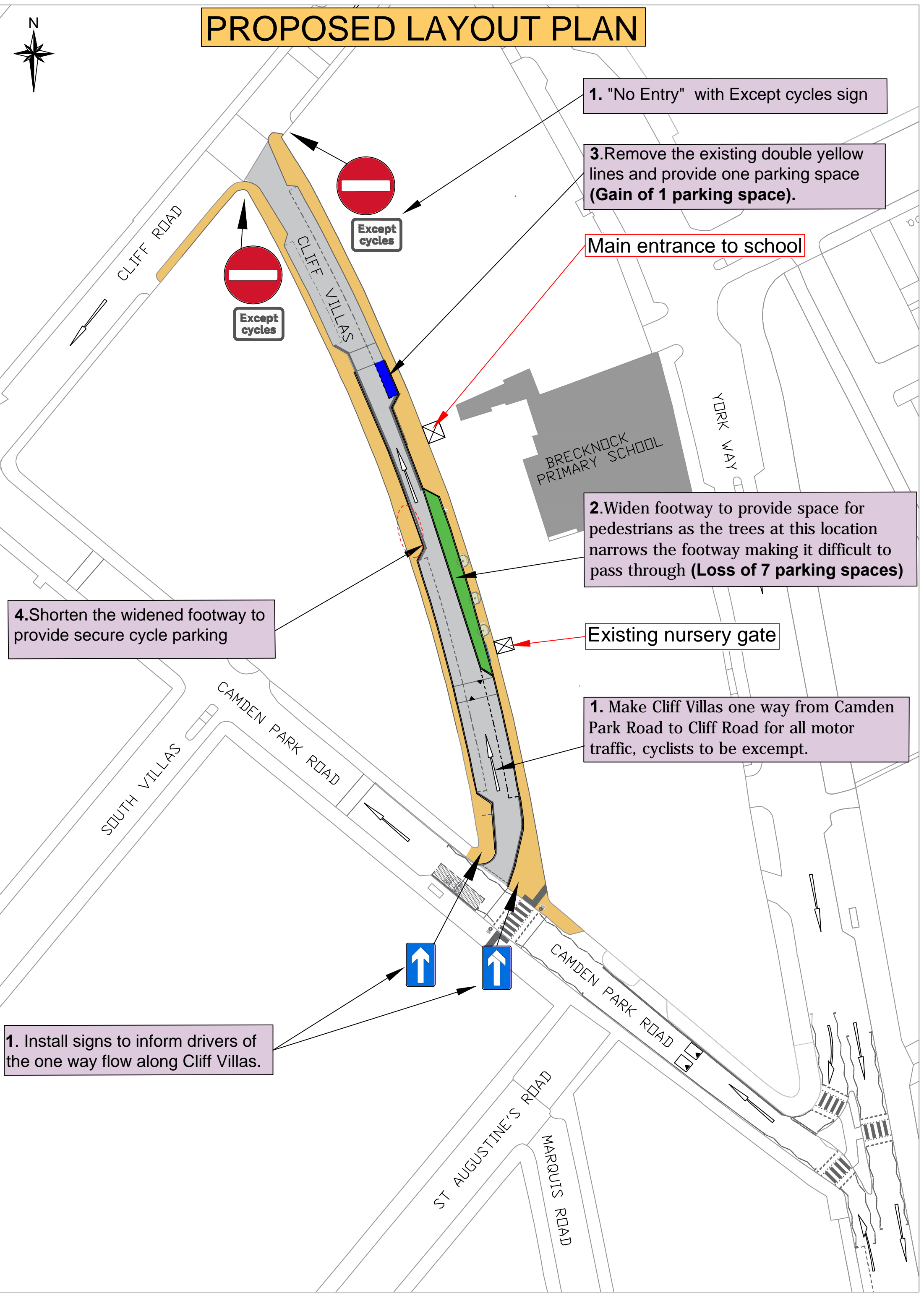


# PROPOSED LAYOUT PLAN



1. "No Entry" with Except cycles sign

3. Remove the existing double yellow lines and provide one parking space (Gain of 1 parking space).

Main entrance to school

2. Widen footway to provide space for pedestrians as the trees at this location narrows the footway making it difficult to pass through (Loss of 7 parking spaces)

Existing nursery gate

1. Make Cliff Villas one way from Camden Park Road to Cliff Road for all motor traffic, cyclists to be exempt.

4. Shorten the widened footway to provide secure cycle parking

1. Install signs to inform drivers of the one way flow along Cliff Villas.

CLIFF ROAD

CLIFF VILLAS

BRECKNOCK PRIMARY SCHOOL

YORK WAY

SOUTH VILLAS

CAMDEN PARK ROAD

CAMDEN PARK ROAD

ST AUGUSTINE'S ROAD

MARQUIS ROAD