

TACKLING THE
CLIMATE
CRISIS



***DRAFT* CLIMATE ACTION PLAN**

2026-2030

camden.gov.uk/climate-crisis

we
make
Camden

 **Camden**

Contents

Foreword from Councillor Harrison	3
Why this plan matters?	5
What have we achieved so far?	8
What's shaping this Climate Action Plan?	17
Where we want to be: Climate Action Plan 2026 - 2030	28
Climate Action Plan 2026 - 2030: Priorities, outcomes and actions	32
How will we get there?	66

1. Foreword from Councillor Harrison



In 2019 we held the UK's first Citizen's Assembly on the climate crisis to help design a climate action plan for Camden that responded to the priorities and lived experiences of our residents. From the publication of the Climate Action Plan through to 2025, we have seen staggering levels of climate action from community groups across Camden including Power Up North London, Think and Do and the brilliantly named LifeafterHummus with community solar projects on schools installed, surplus food supermarkets expanded and circular economy themed "sharing

spaces" on our housing estates opened to all. The Council has also led the way, attracting unprecedented levels of external investment into Camden to support climate action across Camden but also to deliver major energy efficiency retrofit projects on some of our landmark buildings, including Highgate and Swiss Cottage libraries and Talacre Leisure Centre, driving our own climate emissions down by 64.5%.

I said in the Foreword to the first Climate Action Plan that we would honour and sustain the participatory approach to climate action that the Citizens' Assembly established and I am proud to say that this second Climate Action Plan, which will take us through to 2030, has been built on similarly strong foundations - listening deeply to our community about how the climate crisis is affecting them, hearing their ideas about how we can help everyone to both build their resilience to the changing climate but also take meaningful action to slow its progress, and critically, understanding the role of the Climate Action Plan in providing the framework needed to attract the investment needed to realise the economic and social opportunities presented by a zero carbon and climate resilient Camden.



I want to thank everyone who has played a part in the development of this new Climate Action Plan – it is your plan and we will help make it happen. At a time of increasing disinformation about the benefits of climate action, I also want to confirm the Council's continuing commitment to tackling the climate crisis locally - we know that the climate crisis is affecting Camden and we know that climate action not only helps to address it but also plays a vital role in improving the daily lives of our community.

2. Why this plan matters?



Camden has long been at the forefront of climate action. In 2019, the Council hosted the UK's first Citizens' Assembly on the climate crisis, setting a new benchmark for how local people shape the decisions that affect their future. That same year, we committed to doing everything within our power to help make Camden a zero-carbon borough by 2030.

Since then, Camden has made real progress. Borough-wide emissions have fallen by 52%, and emissions from the Council's own estate and operations have reduced by 64.5%. The citizen shaped Climate Action Plan 2020-25 has led to new levels of community-led climate action across Camden with more than £35 million invested - from community energy partnerships to retrofitting homes, planting trees and transforming neighbourhoods.

Despite these achievements, we must acknowledge the size of the challenge that we still face - achieving a zero carbon Camden by 2030 is beyond the influence, control and financial reach of the Council. The estimated cost is in excess of £10 billion and the Council only has direct influence over a third of Camden's emissions.

Despite our best efforts, the borough is already experiencing the tangible impacts of a changing climate - from the energy crisis and overheating homes to record-breaking heatwaves and devastating floods of 2021 that damaged homes and businesses. The community have told us they are concerned about increasing levels of heat and flood risk, with the impacts disproportionately affecting lower income households and those with underlying health conditions. At the same time, the 2025 Institute of Health Equity study for RAISE Camden shows that health and income inequalities have widened.

We have already begun to shift focus towards building the borough's resilience to climate risks, through the Council's Climate Adaptation and Resilience Plan and our statutory Flood Risk Management Strategy, however much of Camden's infrastructure, buildings and communities remain vulnerable.



This plan matters because it reflects a necessary evolution in our approach to provide one complete response to addressing the climate crisis - while an urgent transition to a zero carbon borough remains vital, we must also focus on protecting those most vulnerable to its impacts and building the borough's resilience to help our communities adapt and thrive in a changing climate.

This is also a plan rooted in social justice. It acknowledges that those who are most affected by climate impacts - such as lower-income households and people with long term health conditions - are often those who have contributed the least to the problem and are less able to protect themselves. And it's a plan shaped by the voices of Camden's residents, who have told us they want practical support and action that makes their day-to-day lives better - whether its greener neighbourhoods, more comfortable homes, better health and wellbeing through active travel, cutting energy bills or saving money through re-using and sharing resources.



Our ambition for zero carbon hasn't weakened and it remains central to our ambition. The Council will continue to lead by example across our own estate and operations through our decarbonisation programme. We will help to create the conditions in the borough for socially and environmentally responsible investment and growth in Camden that supports the local economy without adding to the climate crisis and its social impacts.

The Camden Climate Action Plan 2026–2030 sets out our priorities for the next five years. It builds on the successes of the past Climate Action Plan 2020 - 2025, responds to today's social, environmental and economic challenges, and looks ahead to a future where Camden is not only doing everything possible to reduce emissions but also becoming a more resilient, fairer and more climate-ready borough for everyone.

3. What have we achieved so far?

3.1 Timeline of climate action in Camden from 2019

3.2 As a borough

3.3 As a Council

3.1 Timeline of climate action in Camden from 2019

2019

- Camden declared a climate and ecological emergency
- We held the UK's first Citizen Assembly on the climate crisis



- In 2020 we launched our 2020 – 2025 Climate Action Plan - a framework for action based on the 17 recommendations agreed by assembly members and guided by an ambition to do everything possible to make Camden a zero carbon borough



2020

- Camden's first Library of Things opened in Kentish Town
- The Camden Climate Citizen Panel formed



2021

- We won funding for Somers Town Future Neighbourhood
- We raised £1m through Camden Climate Investment fund for local climate projects
- The first phases were completed of the Agar Grove development built to Passivhaus standard, using a 'fabric first' approach for superior energy performance.



2022

- We retrofitted Swiss Cottage Library
- We won £640k to deliver Brent and Camden Business Climate Challenge, supporting 50 businesses through energy audits and training
- The Fixing Factory was opened in Queen's Crescent
- A community hub focused on repair and reuse

2023

- We supported the installation of solar PV at Talacre Leisure Centre with Power Up North London
- We launched our Climate Adaptation and Resilience Plan, recognising the need to understand and protect the borough against the impacts of the changing climate
- The award winning Parliament Hill Sustainable Urban Drainage System (SuDS) project was completed
- The Somers Town Energy district energy network was extended to Brill Place Tower.



3.1 Timeline of climate action in Camden from 2019 cont'd

2024



- We partnered with City of London to install natural flood management measures on Hampstead Heath
- We re-launched our Camden Climate Fund increasing the amount that can be given to projects that support carbon savings and provide co-benefits across the borough
- In 2025 there are now 32 Healthy School Streets covering 36 schools in Camden, up from just 4 in 2019.



- In 2025 over 5 months, we held community and business conversations to help us understand how the climate crisis is affecting them and what we can do to help
- On 26th April we hosted Camden's Climate Action Day, the culmination of our engagement to shape this Climate Action Plan

- Holborn Liveable Neighbourhood project launched
- Retrofits of Highgate Library, the Netherwood Youth Centre and Waterlow Park Visitor Centre were completed
- Parliament Hill School and Regent High school solar installations were completed
- We continued to deliver SuDs across the borough including Goldhurst Terrace raingardens in South Hampstead



2025



- We secured £13.5m government funding towards the installation of energy saving and generating features on 3,000 council homes
- We secured £6.55m government funding towards the decarbonisation of Kentish Town and Swiss Cottage Sports Centres
- The trail pedestrianisation of Camden High Street began

- By 2025, we have more than trebled the length of segregated cycleways in Camden and installed 560 electric vehicle charging points
- By 2025, 5,751 trees have been planted across the borough
- By 2025 over £440,000 of funding had been awarded to more than 90 projects through Camden Climate Funds to improve the energy efficiency of the borough's homes, workplaces and community buildings and support community-led climate action.

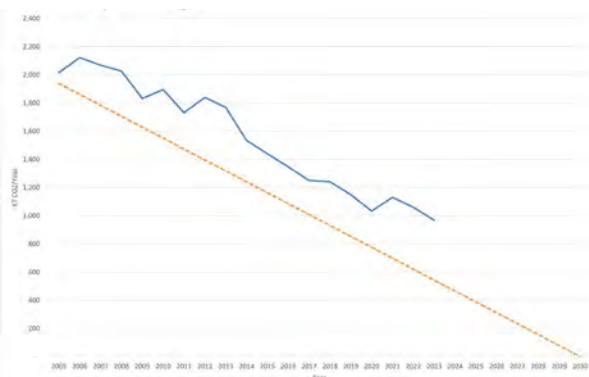


3.2 As a borough

The success of Camden's Climate Action Plan depends on action by all citizens and organisations across Camden. Progress is measured by the level of greenhouse gas or CO2 emissions in Camden.

Since 2005, borough-wide direct carbon dioxide emissions have reduced by 52%. Since the adoption of the Climate Action Plan in 2020, there has been a 15.5% fall in borough-wide emissions.

Borough wide emissions reduction



Spotlight on.... Somers Town Future Neighbourhoods



The real achievement of the 2020 – 2025 Climate Action Plan has been the impressive level of community-led action across the borough. The incredible knowledge and expertise within the community has seen projects delivered that have taught residents skills and created job opportunities, reduced waste, saved residents money and created spaces for nature to improve our environment, at the same time as reducing Camden's carbon emissions!

Camden was one of just two London boroughs selected by the Mayor of London to deliver the Future Neighbourhoods 2030 (FN2030) programme - an initiative supporting place-based solutions to climate change and social inequality.





Spotlight on.... Somers Town Future Neighbourhoods cont'd

Piloted in Somers Town over the last three years FN2030 has delivered a range of community-led projects **that improve health, economic resilience, and social wellbeing, while also reducing environmental impact**. From solar panels and surplus food hubs to repair cafés and accredited climate training, the programme has supported residents to embed sustainability into daily life.

A key learning has been that effective climate action must respond to local priorities. Many residents face immediate challenges - rising costs, poor health, and housing insecurity. But when climate initiatives are aligned with these concerns (e.g. food growing, energy efficiency improvements and skills sharing), they lead to more sustainable, lasting change.

Highlights include:

- **The Learning Hub:** Local workshops that combine climate learning with cost-of-living solutions (e.g. upcycling, reducing food waste).
- **Climate Action Extended Project Qualification:** A 12-week accredited course (by Central Saint Martins) helping residents turn ideas into fundable climate projects.
- **Room of Things:** A redistribution hub where volunteers exchange time for surplus food and goods
- **Swap & Repair Events:** Community events that combine clothes swaps with hands-on repair and upcycling.
- **Sharing Spaces:** Resident-led hubs for skill-sharing and collective climate action, supported by Think and Do Camden.
- **Air Quality Activism:** Indoor sensor kits and outdoor community science projects empowering residents with knowledge to improve air quality and help protect their health.
- **Cycle Maintenance & Upskilling:** Pop-up bike repair stations that train young people in mechanics and climate awareness.
- **Community Gardening:** Led by Global Generation and others, greening projects and peer-led networks reclaim underused spaces to support biodiversity and wellbeing.

Infrastructure projects

As well as empowering community action, the FN2030 programme has delivered a range of infrastructure projects to reduce carbon emissions. These include:

- the installation of a 100kW solar energy system on Regent High school
- creation of new cycle lanes and secure cycle parking,
- the development of seven mobility hubs, providing access to low-carbon and shared transport options,
- a pilot for internal wall insulation in council homes,
- the expansion of the local decentralised energy network - alongside a feasibility study to explore its decarbonisation
- and the delivery of greening and climate resilience infrastructure across housing estates.



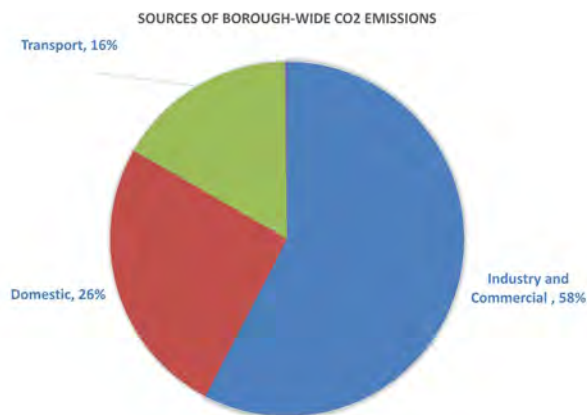
Sources of emissions:

Greenhouse gas emissions in Camden are mainly caused by heating and powering buildings. Around 84% of greenhouse gas emissions are generated by buildings and 16% result from transport.

These emissions are referred to as 'direct' emissions and are measured through the consumption of gas, electricity and other fossil fuels within the borough.

By far the largest source of direct building related greenhouse gas emissions in Camden stem from the "Commercial and industrial" sector, which includes offices, shops and light industry - emissions from this sector account for 58% of all emissions. Housing contributes 26%.

Transport makes up a relatively small 16% contribution to borough wide emissions. Although the contribution to carbon dioxide emissions from transport is low, road transport is one of the primary causes of poor air quality in the borough.



These figures only paint a small picture of the wider impact Camden has on greenhouse gas emissions globally. The emissions associated with the products we buy, the food we eat, where and how we travel are key sources of global emissions. These emissions, known as 'indirect' emissions, result from consumer choices, the behaviour of us as citizens and the supply chains of Camden-based organisations and businesses.

It is estimated that two-thirds of greenhouse gas emissions across London are 'indirect'.

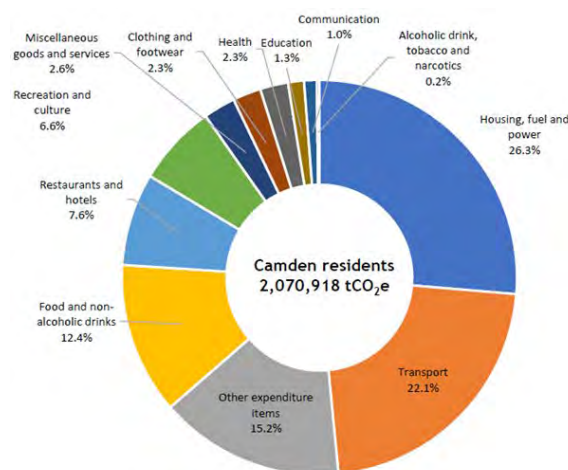


Figure 2.12: Camden resident's household consumption emissions



Can we get to Zero Carbon in Camden?

The Council has powers or influence over approximately 1/3 of emissions in Camden for example by determining what is built in our communities, how we get from place to place, how we reduce our waste and much more.

Addressing the remaining two thirds of emissions therefore depends on people and businesses choosing 'low-carbon' solutions locally.

Achieving a zero carbon Camden, whereby emissions are reduced to as close to zero as possible and any residual emissions are offset, would cost an additional £10 billion. For example, switching every home in Camden from a gas boiler to a low-carbon electric heating system - and making sure those homes are properly insulated - could cost around £45,000 per household. On top of that, people would need to stop using petrol and diesel cars, or switch to electric vehicles, at further cost to the community.

Given the scale of the financial challenge, and the fact that 2/3 of greenhouse gas emissions are not controlled by the Council, Camden's climate programme focuses on creating a framework for climate action for everyone living and working in Camden, with the aim of helping to make the day-to-day lives of everyone better and supporting an equitable transition to a zero carbon Camden.



3.3 As a council – Leading by example

As a council, we have committed to do everything we can to reduce emissions from our buildings and operations with the ambitious target of being zero carbon by 2030.

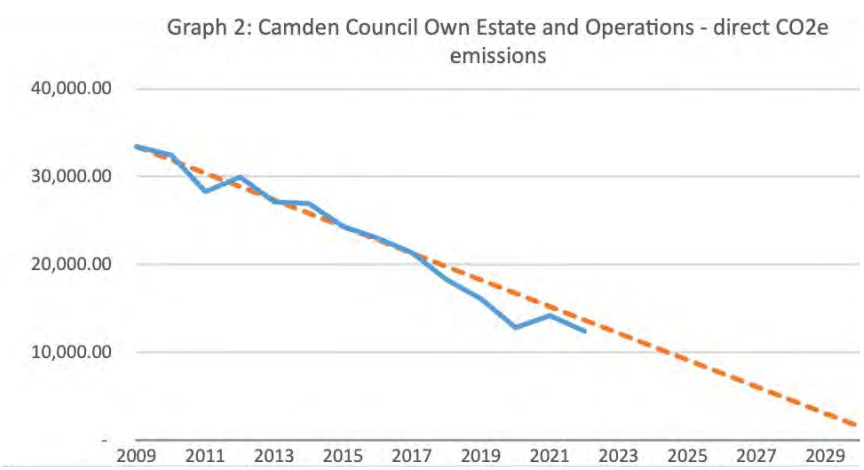
The Council's carbon footprint covers emissions from our buildings, schools, leisure centres, fleet, street scene operations, and other estate-related activities, except for Council owned housing, where heating and electricity is consumed by tenants and leaseholders.



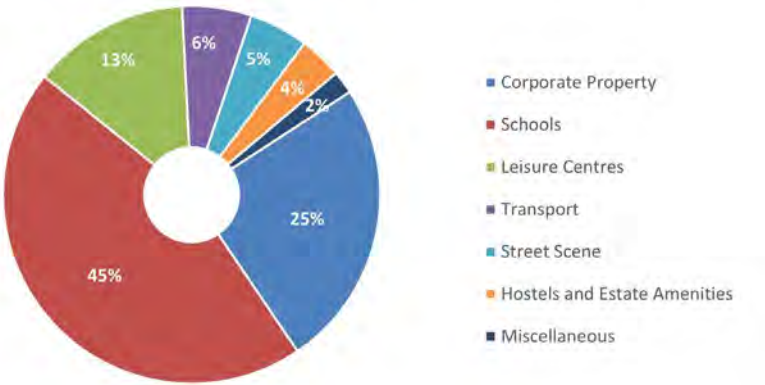
Across the Council's own estate and operations, CO₂ emissions have reduced 65% since 2010. Since the adoption of the Climate Action Plan in 2020, there has been a 23% fall in CO₂ emissions. This progress has been achieved through a combination of energy efficiency upgrades to buildings, renewable energy installations, and greening our fleet, and is guided by our Carbon Management Plan, which sets out what we need to do to achieve our 2030 target.

To ensure transparency and accountability, Camden was one of the first councils in the UK to publish an annual Climate Budget alongside its financial budget. The Climate Budget tracks the funding and emissions impact of our decarbonisation efforts across our corporate buildings, leisure centres, libraries, our fleet and schools, helping us to align investment with our climate goals.

The latest 2024/25 Climate Budget showed that while we are making strong progress, a funding gap of £225million remains. Without further action and investment, we will not be able to achieve our 2030 target.



GHG emissions split across sectors - 2023/24



This underscores the need for new forms of investment, innovation, and collaboration across all parts of the Council - embedding climate action into the heart of Council decision-making. Our ambition remains clear: to do everything we can to reduce emissions from our own estate and operations to zero by 2030.





Spotlight on.... Swiss Cottage Library



The £3.8 million refurbishment of Swiss Cottage Library is a leading example of Council projects under our Carbon Management Plan.

This Grade II Listed building retrofit included improved insulation, new energy efficient glazing, solar panels and a new, low-carbon, heating system, helping to reduce energy use by around 36% at the library. The project is predicted to save more than £31,000 a year in energy costs once fully optimised while also delivering annual carbon savings of 138 tons of CO₂.



Spotlight on.... Council Housing Retrofit



While Camden's council housing is not included within our estates and operations carbon footprint, we know that it is a major source of emissions in the borough representing around 32% of 'direct' household (housing related) emissions in Camden. A key part to the Climate Action Plan therefore focuses on improving the energy efficiency of Council housing.

For example we invested £3.6m to fully retrofit and improve the comfort and energy efficiency of 58 Council-owned homes within 5-7 Belsize Grove which was completed in 2024. This included the installation of double glazing, internal and external wall insulation, high efficiency electric heating and a communal solar energy system and increased their Energy Performance Rating to a B.

4. What's shaping this Climate Action Plan?

- 4.1** A changing climate - the case for climate adaptation and resilience
- 4.2** Camden's local economy tackles the climate emergency
- 4.3** Embedding the community at the heart of Camden's Climate Action



4.1 A Changing Climate – the case for climate adaptation and resilience

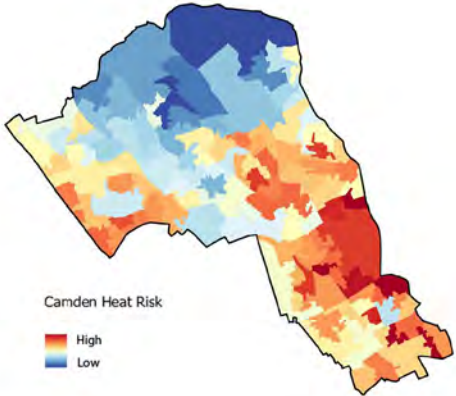
Since we launched the 2020-2025 Climate Action Plan, we have experienced the hottest day recorded in the UK, with temperatures reaching 40.3°C in 2022, causing significant spikes in respiratory related hospital admissions and damaged infrastructure. In 2021, over 100 homes and businesses in Camden were damaged by flooding. These events are not anomalies - they are part of a growing pattern of extreme weather that is expected to become more frequent and more intense. The impacts of the climate crisis are already being felt across our homes, streets, green spaces, local economy and public services.

While reducing emissions remains essential, we must also focus on preparing for and adapting to the impacts of the climate crisis. This means building Camden's resilience - especially for those most vulnerable to climate hazards.



In 2023, the Council published Camden's first **Climate Adaptation and Resilience Plan**, a two-year interim plan designed to improve our understanding of local climate risks and lay the foundations to improve the borough's resilience to them. The plan identified the key climate hazards facing Camden, including:

- **Extreme heat:** Periods of hot weather are increasing in frequency, intensity, and duration. So far in the summer of 2025 we have had three heatwaves in London. A significant contributing factor to the amplified heat in Camden is the urban heat island effect. Camden is surrounded by an urbanised landscape characterised by concrete structures, asphalt roads, and limited green spaces. These urban features absorb and retain heat, making temperatures in urban areas noticeably higher than in rural ones.



- **Surface water flooding:** Caused by intense rainfall overwhelming drainage system capacity, we have experienced three significant flood events in the borough in the past 50 years. Climate change is making Camden summers drier with more periods of intense heavy rainfall – increasing flash flooding risk.



- **Air pollution:** Climate change exacerbates the conditions which contribute to poor air quality, with air pollution having serious health impacts. Camden's approach to tackling poor air quality and building resilience to the impacts will continue to be delivered and monitored through the dedicated **Clean Air Strategy and Action Plan**.



- **Water scarcity, drought, and biodiversity loss:** Emerging risks that threaten both people and nature.

There are factors that make some people more vulnerable to, or exposed to, these risks - such as the area of the borough where they live, age, health, housing conditions, and access to green space - and so it is important to address these inequalities through targeted action.

Failing to act now will only increase the costs to our communities in the future. Without investment in climate resilience, residents may face higher energy bills from poorly insulated homes, rising food prices due to supply chain disruptions, and greater financial and emotional strain when recovering from floods or heat-related damage. The cost of inaction is not just economic - it affects people's health, wellbeing, and quality of life. By acting early, we can reduce these risks, protect the most vulnerable, and create a borough that is better prepared for the challenges ahead.

The Council's work so far has shown that adaptation is about people as well as infrastructure. It's about ensuring that residents know how to stay safe during a heatwave and hot weather, that Camden's public spaces offer shade and cool refuges, and that Council services are equipped to respond to emergencies. It's about planting trees, creating rain gardens and sustainable drainage systems, and supporting community-led flood plans. And it's about embedding resilience into everything we do - from planning new developments to supporting local businesses.

This Climate Action Plan therefore builds on the foundations of the previous plans to focus on action to improve the day-to-day lives of Camden's citizens whilst building community resilience - saving residents money; providing training and skills opportunities; reducing air pollution; creating healthier, cleaner, safer and greener streets and neighbourhoods. Making Camden a better place to visit, live and work.



Spotlight on.... Cool Spaces and Stay Cool events



Camden's "Cool Spaces" are accessible spaces that can offer air conditioning, free water, and a safe environment to rest during extreme heat. They're particularly important for vulnerable individuals, including older adults, young children, and those with health conditions.

During the summer of 2025, the Council launched a Stay Cool community-focused campaign to raise awareness about the increasing risk of heat, worsened by climate change. It aimed to empower Camden residents with practical ways to keep themselves and their home cool, so that everyone can enjoy a safe and fun summer. The campaign focused on ensuring that vulnerable residents are informed, supported and included in efforts to stay safe during extreme heat.



Delivered in partnership with Think & Do, eight events took place across Camden, reach out to over 2000 older people, people with learning disabilities and their carers, children

and their parents and carers, and rough sleepers, providing them with information and free resources to help them stay cool in extreme heat.



Spotlight on.... Greening Camden's Streets - Nature-based solutions for flood resilience

Across Camden, the Council are committed to adding greenery (green infrastructure) into our transport projects whenever possible. We're taking every opportunity to add plants, trees and rain gardens which slow the rate at which rainwater enters the sewer network during heavy rainfall to help combat local flooding. Over the last 5 years our transport projects we have added half a football pitch worth of new greenery to the borough!



This work is grounded in [Camden's Transport Strategy](#), which highlights the importance of plants and trees in providing shade, shelter, reducing the risk of flooding and supporting local biodiversity in our public realm. We also recognise how important areas of greenery are for the health and wellbeing of our communities, providing a place to rest, chat and enjoy.

Major transformational project like the West End Project completed in 2023, included 70 new trees, three new pocket parks, three new public spaces with plants and a new park at Alfred Place. This formed the blueprint for adding planting to other large-scale transport projects like the current Holborn Liveable Neighbourhood, which will deliver new green spaces, trees and planting, with a particular focus on shading in areas identified as having higher heat risk.

We're also changing the balance of how much space on our streets is devoted to nature. Parking spaces transformed into Parklets like those on Great Ormond Street and in Somers Town support the community or local businesses to curate small spaces for people to enjoy. While projects like Gordon Square allow us to trial and test out new areas for people and plants, giving the local community the power to shape how these spaces work now and into the future.



4.2 Camden's local economy tackles the climate emergency

Businesses are among Camden's largest contributors to emissions, accounting for 58% of the borough's carbon footprint. They therefore have a crucial role in helping Camden become zero carbon and climate resilient. This Climate Action Plan places a stronger emphasis on partnering with local organisations to accelerate progress on Camden's ambition and catalyse action among the commercial sector.

Since 2020, the Council has delivered a range of projects and programmes to support businesses on their decarbonisation journeys, including:

- **Camden Climate Alliance:** a sustainability network for businesses committed to tackling the climate crisis, which now boasts over 500 members

- **Business Climate Challenge:** an energy efficiency support programme for Small and Medium Sized Enterprises that has delivered energy audits to over 130 businesses, helping them identify ways to reduce energy consumption.
- **Climate Connectors:** a programme which allows businesses to support small-scale climate projects in the community including schools. Since 2022, the programme has generated over £36,000 in business donations to fund local sustainability projects, and over 1,881 hours of corporate volunteering.

Highlights from engagement process:

What we did:



In mid-2025, through workshops and events, we engaged with a wide range of voluntary and community sector organisations and businesses, from smaller enterprises (SMEs) to larger businesses and Business Improvement Districts, and representing key sectors in Camden – retail and hospitality, transport, healthcare and commercial landlords - to help understand the challenges they face in reaching their climate goals and building their resilience to a changing climate.



What we heard:

- **Knowledge gaps:** Businesses highlighted the need for more support in areas such as measuring and reducing 'indirect' emissions (referred to as Scope 3, such as staff travel), understanding and calculating carbon footprints and effective waste management.
- **Staff engagement and education:** Many businesses highlighted the need for training to help business understand how they can respond to the climate challenge in a way that improves the financial and organisational resilience of the organisation.
- **Funding:** Many businesses noted that funding support would be essential to accelerate progress and implement carbon saving and resilience-building measures.

- **Climate resilience and adaptation:** Many businesses expressed concern about the increasing impacts of the climate crisis and the challenges of responding effectively. Heat risk was highlighted as a particular issue, especially for those in the healthcare and transport sectors.
- **Communication and peer-to-peer support:** Throughout the engagement process, there was strong interest in receiving support from the Council to bring businesses together to share knowledge, highlight case studies, and opportunities to support local projects.



What we will do:

This next Climate Action Plan is an opportunity to take bold action together to tackle the climate challenge, in a way that builds the resilience of the local economy and better the day-to-day lives of our community. The Camden Climate Alliance will remain central to this, undertaking actions including:

- Helping businesses build the skills needed to reduce emissions and improve their resilience to climate risks, support their existing Climate Action Plans, and unlock new opportunities for the benefit of the borough.
- Leveraging business social value to support local climate projects in schools, charities and third-sector groups.
- Celebrating and sharing success stories to recognise efforts, promote transparency, and raise public awareness through initiatives like the Carbon Certification Scheme.





Spotlight on.... The British Library

The British Library understands the urgency of addressing the climate crisis. With its long-term responsibility to safeguard its collections, the Library has already taken significant steps to reduce its environmental impact, aiming to lead by example and inspire others. Since 2009, the British Library has cut emissions by 67% through initiatives such as:

- Installing LED lighting and solar thermal systems

- Reducing single-use plastics
- Engaging staff and visitors via exhibitions and webinars

In 2024, the Library launched a dedicated sustainability strategy to accelerate its efforts. Their key insight is the importance of involving people throughout the organisation early on and identifying projects that can both reduce emissions and leverage available funding opportunities.



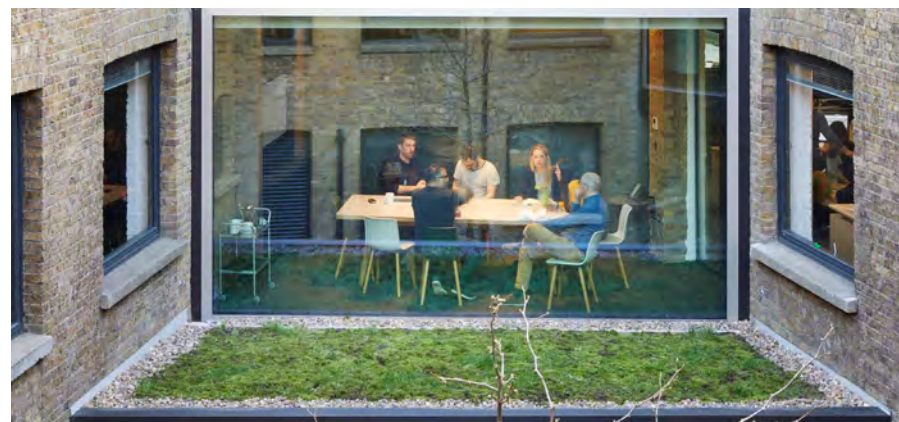
Spotlight on.... Sheppard Robson

Sheppard Robson, an architectural practice based in Camden Town, recognises the significant role the built environment plays in tackling the climate crisis. The practice is committed to rethinking both how it designs buildings and how it operates as a business.

Sheppard Robson took part in the Mayor of London's Business Climate Challenge in 2022 and were able to reduce emissions by 5.6%. This reduction was achieved through a series of low-cost measures including the rollout of LED lighting and

behaviour change campaigns encouraging staff to switch off lights and air conditioning units when not in use.

These early actions have already encouraged a greater level of awareness and ambition among staff, laying the groundwork for more substantial change. Sheppard Robson emphasised the importance of starting small and focusing on simple, visible changes before tackling more complex areas like Scope 3 emissions.





4.3 Embedding the community at the heart of Camden's Climate Action

What we did:

At the heart of our approach to climate action is a belief that meaningful change must be shaped by the people who live and work here. That's why, in developing this new Climate Action Plan for 2026–2030, we placed community engagement at the centre of the process - building on the legacy of the Citizens' Assembly on the climate crisis in 2019 and the Camden Citizen's Climate Panel who oversaw the delivery of the 2020 – 2025 Climate Action Plan.

Between November 2024 and May 2025, we ran a wide-ranging engagement programme, reaching over 280 residents, to ensure that the voices shaping this plan reflect those more vulnerable to the impacts of climate change as well as the diversity of our borough. This included:

- Six targeted community conversations with those lesser heard voices who are more exposed to and vulnerable to climate hazards.
- Four "Strategy Room" sessions, exploring future scenarios around food and energy in different neighbourhoods of Camden.
- A "Love Your Climate" Youth Summit with 70 students from eight secondary schools, reviewing the 2019 Citizens' Assembly recommendations from a young person's perspective.
- A session with the Camden Climate Citizens' Panel reviewing the 2019 Citizens' Assembly recommendations and the progress of the 2020 – 2025 Climate Action Plan.
- A Climate Community Action Day in April 2025, bringing together both new voices and original Assembly members to help shape this Climate Action Plan.

What we heard:

These conversations revealed a borough deeply concerned about the impacts of the climate crisis and committed to taking action. Residents told us they are already feeling the effects - through heatwaves, flooding, poor air quality, and rising costs - and they want support to protect themselves, their families, and their communities whilst giving them the means to take action.

Some of the key insights include:

- **Climate risks and resilience:** Extreme heat, air pollution, and flooding were the most commonly cited concerns. Residents also highlighted biodiversity loss and water scarcity. Many shared personal stories of overheating homes, flooded streets, and the impacts on their health and wellbeing.
- **Equity and vulnerability:** Not everyone is equally equipped to cope with a changing climate, with people with health conditions and lower income households particularly at risk.
- **Everyday solutions:** Residents wanted practical, accessible and affordable ways to take action - such as improving home energy efficiency, re-using and sharing resources, growing food, accessing greener travel options and recycling opportunities.
- **Community action and empowerment:** There was an appetite for more community-led initiatives, from greening estates to sharing resources. People wanted to be part of the solution and see the Council as an enabler. Many asked for more support to connect with other groups locally, more opportunities for young people and funding or space for projects.
- **Transparency and shared responsibility:** Residents asked for more information on Council led climate action and called on businesses and other organisations to take more responsibility. There was a call for businesses to invest more in local communities.

- **Accessibility and communication:** Many residents - particularly disabled people and people with learning difficulties - emphasised the need for accessible communication. This includes using plain language, visual formats, and face-to-face engagement.
- **Youth voice:** Young people wanted more trees, access to green space, sustainable transport and renewable energy. They also called for more education on climate issues and opportunities to take action in their schools and communities.





Spotlight on.... Climate Community Action Day

Our engagement culminated in the Climate Community Action Day in April 2025, which brought together 55 residents, both new voices and original Assembly members who had helped shape the 2020-25 Climate Action Plan, to reflect on our progress and help shape the content of this new Climate Action Plan.

Over the course of a day, participants heard from climate science experts on the science behind the climate crisis and visited a marketplace showcasing the work of our community partners to learn more about the community-led climate action achievements under the 2020-2025 Climate Action Plan. In the afternoon, the group revisited the original Citizens' Assembly recommendations and explored new ideas and themes to be considered for the next plan.

The themes that emerged from the day included food, circular economy, communications and outreach, green businesses & green career paths, inclusion, commercial and industry sector, lobbying and council operations



Everything we have learnt from our conversations with the community has directly shaped the structure and priorities of this new Climate Action Plan. It has reinforced the need to integrate climate adaptation and resilience alongside emissions reduction and confirmed that through climate action we can help make the day-to-day lives of our residents better - from providing energy security to supporting better health and wellbeing.

Above all, the message from our communities is clear: Camden's response to the climate crisis must be inclusive, practical, and empowering. This plan reflects that vision.



5. Where we want to be: Climate Action Plan 2026 - 2030

- 5.1 Overarching objective
- 5.2 Principles guiding the way we work
- 5.3 Co-benefits



5.1 Overarching objective:

“ Camden is a resilient, inclusive, and climate-ready borough where people, organisations, buildings and public spaces are equipped to help tackle the climate crisis and adapt to its impacts in a way that improves the day to day lives of our community.

The Climate Action Plan 2026-2030 continues our commitment to tackle the climate crisis by providing a framework of action everyone in the borough can contribute to. There are 40 outcomes we will work towards to reduce emissions and build resilience to climate risks in Camden. By delivering projects and actions across 7 priority areas (outlined in the following section) we can transform Camden into a resilient and sustainable borough, fostering positive change and socially and environmentally responsible growth, while addressing the challenges posed by the climate crisis. This approach will not only create a legacy of action, resilience, inspiration, and commitment but also unlock the potential for a zero carbon, greener, more prosperous community. Building a zero carbon and resilient Camden means continuing to reimagine our borough, enhancing our public spaces and infrastructure, embracing innovation, and setting an example for others.



5.2 Principles guiding the way we work

Camden's Climate Action Plan 2026–2030 is more than a list of actions - it is a shared commitment to delivering change in a way that is fair, inclusive, and effective. The way we deliver this plan matters just as much as what we deliver. That's why we are guided by a set of core principles that reflect the Council's values and the lessons we've learnt from our communities.

This plan is also closely aligned with We Make Camden - our overarching vision for the borough - reflected both in the plan's ambition and in our commitment to collaborate with our communities to drive meaningful change.

These principles outlined below shape how we work, how we make decisions, and how we collaborate with others:

- **Transparency**

We will be open and honest about the challenges we face, the progress we make, and the decisions we take. We will share information clearly and accessibly, and we will welcome scrutiny and feedback.

- **Equality, Inclusion and Equity**

We recognise that the climate crisis does not affect everyone equally. We will prioritise actions that support those most vulnerable to climate impacts and ensure that everyone - regardless of background, income, or ability - can participate in and benefit from climate action.

- **Community Empowerment and Enabling Community-led Action**

Camden's strength lies in its people. We will support residents, community groups, and local organisations to lead the way - providing the tools, funding, and space needed to take action locally.

- **Neighbourhood Approach**

Every part of the borough is different. We will tailor our approach to reflect the unique needs, opportunities, and voices of each neighbourhood - ensuring that action is rooted in place and community.

- **We Make Camden Missions approach**

Climate action cannot happen in isolation. The Missions approach - as set out in We Make Camden - focuses on mobilising cross-sectoral efforts to deliver joined-up solutions. The Missions approach recognises the deeply interconnected nature of the climate crisis and emphasises the importance of sparking innovation across sectors and teams to achieve our goals.

- **Evidence and Data-led**

Our decisions will be grounded in the best available evidence. We will use data to understand risks, target resources, and measure impact - ensuring that our actions are effective and accountable.

- **Urgency**

We recognise that this is still a climate emergency and we need to act now.



Spotlight on.... We Make Camden Missions:

In Camden we have four Missions:

Food: By 2030, everyone eats well every day with nutritious, affordable, sustainable food

Estates and neighbourhoods:

By 2030, Camden's estates and their neighbourhoods are healthy, sustainable and unlock creativity

Diversity: By 2030, those holding positions of power in Camden are as diverse as our community - and the next generation is ready to follow

Young people: By 2025, every young person has access to economic opportunity that enables them to be safe and secure



5.3 Co – benefits

Climate action is not only essential for reducing emissions and building resilience - it also brings a wide range of benefits that support the Council's broader ambitions for a fairer, healthier, and more inclusive borough. The Climate Action Plan 2026–2030 is designed to align with and amplify the goals of other key strategies, including the **Camden Clean Air Action Plan**, the **Camden Transport Strategy**, 'Creating space for nature in Camden' **Biodiversity Strategy** and the We Make Camden missions. It is through the work we do across the whole Council that will help achieve our climate action ambitions.

By tackling emissions from vehicles and buildings - two of the largest sources of air pollution in the borough - this plan directly supports Camden's vision for clean air, as set out in the Clean Air Action Plan 2023–2026. Measures such as phasing out gas heating systems and reducing car dependency will not only cut carbon but also improve respiratory health and reduce health inequalities.

The plan also supports active and sustainable travel - walking, wheeling, cycling, and public transport - which are central to the Camden Transport Strategy's goals of creating safer, healthier, and more accessible streets while reducing car use. These changes not only reduce emissions and air pollution, but also improve physical and mental wellbeing, reduce health inequalities, and make our neighbourhoods more inclusive and pleasant places to live.

We are also transforming Camden's public realm by embedding green infrastructure into our transport and street design - turning grey to green. From tree pits and rain gardens to pocket parks and parklets, these interventions help manage flood risk, reduce urban heat, and support biodiversity. They also create more welcoming, shaded, and climate-resilient spaces for residents to rest, connect, and thrive. Greener streets and public spaces are linked to lower levels of stress, improved cardiovascular health, and reduced risk of respiratory illness. By embedding green infrastructure into our public realm, we are not only building Camden's resilience to extreme weather - we are also creating a borough that is healthier, fairer, and better connected.

The Climate Action Plan also works in close partnership with Camden's **Tree Planting and Biodiversity Action Plans**. These aim to increase tree canopy cover, enhance species diversity, and create greener, more biodiverse neighbourhoods. By integrating climate action with nature recovery, we can reduce flood risk, cool our public realm, and improve access to nature - especially in areas where green space is limited.

Climate action also supports the We Make Camden Missions, which focus on reducing inequality, improving the local food system and Camden's housing estates, as well as creating opportunities for young people. By taking a practical and people-centred approach, whether it's through community-led greening on estates, investing in local food growing, offering skills and training opportunities, or supporting local organisations, the Climate Action Plan can work towards our Camden Missions and foster social cohesion, build local pride, and empower residents to shape a better borough. Investing in energy efficiency and renewable energy creates jobs and skills in the growing low-carbon economy, while reducing energy bills and protecting residents from future price shocks.

In short, climate action is a catalyst for wider social, economic, and environmental progress. By embedding it across all areas of the Council and local life, we can deliver a healthier, fairer, and more climate-ready Camden for everyone.



6. Climate Action Plan 2026 – 2030: Priorities, outcomes and actions

- 6.1 Priority 1 - Enablers
- 6.2 Priority 2 - Council operations
- 6.3 Priority 3 - Local circular economy
- 6.4 Priority 4 - Buildings & retrofit
- 6.5 Priority 5 - Empowerment, education and communication
- 6.6 Priority 6 - Greening & growing
- 6.7 Priority 7 - Sustainable travel

6. Summary of the seven priorities

Enablers	Council operations	Local circular economy	Buildings and retrofit	Empowerment, education and communication	Greening and growing	Sustainable travel
Responding to the urgency of the climate crisis, we enable zero carbon and climate resilient economic growth in Camden	We lead by example to build the Council's climate resilience and address our own operational emissions	We support a local zero waste, circular and sharing economy and reduce the borough's consumption emissions	We ensure Camden's homes, workplaces, schools and other community buildings are resilient to climate risks, energy efficient and help to provide energy security for occupiers	We ensure everyone in Camden is empowered and educated to take action to help tackle the climate crisis, build their energy security and resilience to climate risks	We create climate adapted, resilient and biodiverse green spaces	We enable active travel and healthy lifestyles on climate friendly streets and reduce transport emissions



6.1 Priority 1 – Enablers

6.1.1 Introduction

“ Responding to the urgency of the climate crisis, we enable zero carbon and climate resilient economic growth in Camden.”

The Enablers priority sets the foundation for the entire Climate Action Plan by focusing on the systems, infrastructure, partnerships, and innovation needed to unlock borough-wide transformation.

Our ambition for zero carbon has not weakened. This priority area recognises that while the Council has direct control over only a portion of Camden's emissions, it plays a vital role in creating the conditions for others to act and make the transformation necessary to reach a zero carbon, climate resilient future - whether through planning policy, investment mechanisms, or collaboration with other partners. As an organisation, we will continue to set an example to others by addressing the emissions from our own estate and operations by 2030 through our corporate decarbonisation programme.



Spotlight on.... corporate decarbonisation programme



The decarbonisation programme for our own estate includes schools, corporate buildings, leisure centres, libraries and our fleet but excludes housing. We have so far spent or allocated over £28 million for decarbonisation projects which are forecast to decrease emissions by more than 650tCO₂e annually.

£16.8 million has been towards improving our corporate buildings, libraries and leisure centres, with £8.9 million coming from winning government funding. Projects have included:

- Retrofit of Swiss Cottage Library, £3.7 million with £1.4m grant from government
- Highgate Library retrofit, £1.7 million with £267,000 grant from government

- Energy efficiency retrofits at Netherwood Youth Centre, West Hampstead Library and Waterlow Park Visitor Centre, £2.1 million with a £344,000 grant from government
- Planned energy efficiency and low carbon heating upgrades at Talacre Sports Centre and Spectrum Centre, £1.7 million with £391,000 grant from government
- Most recently £6.6 million government funding has been awarded towards the £7.6 million decarbonisation of Kentish Town and Swiss Cottage Sports Centres

We have also already demonstrated leadership in this space with its approach to testing new innovative solutions. In 2022, the Council reached its £1 million target through the Camden Climate Investment—an innovative Community Municipal Investment that funded new electric vehicle charging points, Healthy School Streets, replacing diesel and petrol vehicles in the Council's fleet, and solar panels on public buildings. This initiative tested how new financing mechanisms such as social investment can deliver tangible climate benefits while also providing a return to the community investors.

More recently in 2025 we won almost £13.5 million in government funding towards an innovative retrofit trial scheme, which will install energy saving and generating features including solar panels and batteries into 3,000 of the least energy efficient council homes, ultimately making residents energy bills cheaper. This trial takes an innovative approach to financing retrofit delivery, with part of the funding coming from an institutional investor, who will be the energy supplier.



Camden is home to several decentralised energy networks (DENs), including the Somers Town Energy Network, which supplies heat and hot water to over 600 homes, a school, and community facilities. This network alone reduces greenhouse gas emissions by approximately 300 tonnes of CO₂e per year compared to using individual gas boilers. Heat networks which use heat from low carbon sources such as waste heat, heat pumps and renewable energy will play an important part in achieving a zero carbon London, and Camden will have a role to play in enabling that transition, through improvements to our own heat networks, but in creating the socially and environmentally responsible conditions for new networks to be built.



This Enablers priority area focuses on:

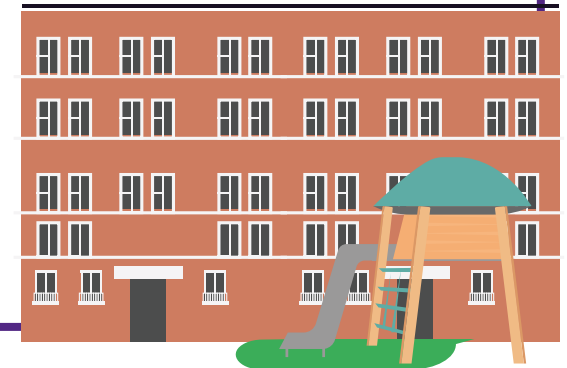
- Testing and scaling up investment through public, private, and community finance
- Embedding climate considerations into planning and development
- Supporting innovation and data-led decision making
- Strengthening partnerships across sectors and authorities
- Increasing the resilience of the local economy
- By investing in the systems that support climate action, Camden is laying the groundwork for a borough that is greener, fairer, healthier, and more resilient.

37



Key facts:

- Approximately 12,000 Council homes are flats on communally heated housing estates. Communal heating provides an opportunity to lower the CO₂ emissions of multiple homes in one go, for example by replacing a centralised gas boiler with a low carbon heating source.
- The Council sets planning policy for Camden through the Local Plan and uses this to both limit CO₂ emissions from new developments and contribute to making the borough more resilient to flooding and overheating. All new buildings in Camden are required to be net zero carbon and incorporate greening. However, new buildings only represent a small fraction of CO₂ emissions with the vast majority attributable to existing buildings.
- Camden's Community Investment Programme has already delivered exemplary sustainable new developments such as Agar Grove Estate. So far 220 homes have been built to Passivhaus standards - using significantly less energy to heat, lowering carbon emissions and helping to tackle fuel poverty, with residents in the new builds saving on average up to 70% on their energy bills.
- Camden's Phase 1 Local Area Energy Plan highlighted heat networks as a central tool for decarbonising the borough's existing building stock, which accounts for over 80% of local emissions.]



6.1.2 summary of outcomes and actions

Priority 1 Enablers

Outcome	Actions
1. Businesses are supported to identify decarbonisation opportunities that realise financial savings and investment opportunities.	1.1 We will encourage businesses to undertake energy efficiency audits and solar surveys where feasible and investigate opportunities to take actions that result in financial savings and investment opportunities
2. Camden is prepared for new heat network opportunities to support the decarbonisation of Camden buildings' heating systems and is compliant with Heat Networks Regulations	2.1 We will work with the GLA, London Councils and other London local authorities to ensure that Heat Network Zoning regulations drive carbon reduction and support economic growth in Camden 2.2 We will ensure that major developments in Camden connect to low carbon heat networks where feasible or be "heat network ready" where appropriate.
3. Diverse funding mechanisms and partnerships deliver the investment necessary to decarbonise and adapt Camden's buildings, heat, energy and transport systems throughout the borough. Investment is targeted to support the specific needs and opportunities of each neighbourhood.	3.1 We will support social financing approaches to decarbonisation across Camden 3.2 We will seek opportunities for private institutional investment to support the delivery of Council-led retrofit and renewable energy projects 3.3 We will seek external grant funding to support small and medium sized enterprises (SMEs) to improve their energy efficiency 3.4 We will investigate the extent to which place-based investment models enable scaled decarbonisation and resilience building in Camden. 3.5 We will promote and expand a local carbon-offsetting scheme that allows businesses and organisations to offset their residual carbon emissions by investing in our retrofit programme
4. Leading by example, we do everything we can to reduce emissions from our own estate and operations by 2030	4.1 We will ensure that the Council's corporate estate and schools have green electricity tariffs by default, but will continue to allow schools to "opt out" if the costs are considered to be too high. 4.2 We will retrofit our corporate and schools' estate in line with our published Carbon Management Plan, making energy efficiency improvements and renewable energy upgrades where funding and feasibility allow. 4.3 We will expand a programme to reduce electricity use in the public realm, including the rollout of LED lighting into Camden's green spaces and parks and de-illuminating road signs where possible. 4.4 We will publish an annual Climate Budget showing the funding position in relation to our corporate, schools and housing retrofit programmes and our progress towards our zero carbon ambitions

6.1.2 summary of outcomes and actions

Priority 1 Enablers

Outcome	Actions
5. New buildings are net zero carbon in their operation, existing buildings reduce their carbon impact, and developments and infrastructure are designed to be resilient to climate risks	5.1 We will seek to ensure through the new Local Plan that from 2026 all new buildings are designed and constructed to be net zero carbon in operation.
	5.2 We will ensure all proposals adding homes or 500m ² + floorspace to existing buildings are combustion free, use low carbon heat, maximise on-site renewables (e.g. solar PV) where feasible, reduce heating and cooling demand, and prioritise energy efficiency
	5.3 We will seek to ensure through the new Local Plan new buildings and substantial refurbishments are water efficient. We will expect high intense water use developments to consider grey water provision.
	5.4 We will ensure that all new build major development and all development proposing substantial demolition assesses and minimises Whole Life Cycle Carbon emissions.
	5.5 We will seek to ensure that new developments are designed to stay cool without active cooling and have demonstrated mitigations for overheating in the wider public realm
	5.6 We will seek to ensure buildings, spaces and development reduce the likelihood of flooding through the incorporation of green infrastructure and Sustainable Urban Drainage.
	5.7 We will encourage developments through the Local Plan to minimise overall material use and increase their use of re-used and recycling materials
	5.8 To encourage people to travel and goods to be transported, healthily and sustainably we will seek to ensure through the new Local Plan the prioritisation of the delivery of safe, healthy, accessible, affordable, and sustainable transport in new developments
6. We test innovation and new technologies to accelerate climate action, improve resilience, and enhance the efficiency of energy, transport, and building systems	6.1 We will partner with universities and other organisations to deliver research projects and activities which further our understanding of climate hazards and resilience building measures
	6.2 We will build partnerships with universities, research institutions and other organisations to understand the role of new data, technology and innovation to accelerate emissions reduction and climate adaptation in Camden
7. We understand and enable the delivery of the low carbon, resilient energy infrastructure needed to deliver sustainable economic growth and Camden's zero carbon ambitions	7.1 We will deliver a Local Area Energy Plan for Camden that establishes how Camden's energy infrastructure should evolve to enable sustainable growth and regeneration, and energy system decarbonisation
8. We work collaboratively with external partners, local authorities, institutions and central government to take action to address the climate crisis and create the policy foundations necessary for equitable decarbonisation. We advocate and lobby for others to reduce their emissions and build resilience of assets and infrastructure to protect those most vulnerable to the impacts of climate change.	8.1 We will support proposals for electricity market reform that would provide lower cost low carbon electricity for residents
	8.2 We will continue to engage with and lobby statutory authorities to prioritise decarbonisation and climate resilience improvements to their assets and operations that serve Camden including Thames Water, TfL, Network Rail and Train Operating Companies.
	8.3 We will continue to partner with London Councils through their Climate Programme to share best practice and explore opportunities to collaborate to advance the delivery of our priorities

A low-angle photograph of the Camden Council building, a grand neoclassical structure with a prominent portico supported by tall columns. The building is made of light-colored stone and has large, multi-paned windows. The word 'CAMDEN' is visible in gold lettering on the facade. The sky is blue with some white clouds.

6.2 Priority 2 – Council operations

6.2.1 Introduction



We lead by example to address our own operational emissions and build the Council's resilience

As a local authority, the Council recognises its responsibility to lead by example in the face of the climate crisis. The Council Operations priority area focuses on reducing emissions from our operations and fleet, embedding climate resilience into our decision-making, and using our influence as a major employer, procurer, and service provider to drive wider change.

Since 2010, Camden has reduced emissions from its corporate estate and operations by over 64.5% (excluding housing), demonstrating what is possible through sustained investment and leadership. However, we know that further action is needed to meet our ambition of becoming a zero-carbon organisation by 2030.

Direct emissions (known as Scope 1 and 2 - the gas we burn in our boilers, fuel we burn in our Council vehicles, and the electricity we buy and use in our buildings for example) are only part of the picture. A significant proportion of the Council's climate impact comes from 'indirect' or Scope 3 emissions - those generated indirectly through the goods and services that we procure. These include emissions from construction, food, transport services, and waste management. These indirect emissions can account for the majority of a local authority's total emissions footprint and so we recognise these emissions are significant and likely to outweigh our Scope 1 and 2 emissions.

This makes procurement a powerful tool for change, helping to reduce emissions across our supply chain whilst also maximising social value. By embedding climate criteria into contracts and working with suppliers to reduce their environmental impact and invest in local climate action, the Council can drive decarbonisation far beyond its own operations.

This priority area is about ensuring that every part of the Council – our fleet, procurement, employees and elected members, and services – have the skills, knowledge and capacity to contribute to our climate goals. It also ensures that we are prepared for the impacts of climate change, with services that are resilient to extreme weather and infrastructure that's resilient to climate risks and that helps protect the most vulnerable.

By embedding climate considerations into our governance, procurement, and service delivery, we can reduce emissions, improve efficiency, and deliver better outcomes for residents.



Key facts:

- Council buildings, vehicle fleet and homes contribute 15% of CO₂ emissions in Camden
- The council operates a fleet of over 300 vehicles
- 14 electric Recycling Collection Vehicles replaced diesel vehicles in Environmental Services in April 2025, with 3 e-cargo bikes to support street cleansing [add images of RCV and cargo bikes]
- There are over 4,600 staff employed at the Council
- The Council spends approximately £460 million on external goods, works and services annually
- The Council's pension fund has almost been fully divested from fossil fuel investments – only approximately 0.62% of the fund remains invested, with a decrease of 6.58% since 2012]





Spotlight on.... Tackling Single-Use Plastics in Council Operations



The Council is taking bold steps to tackle plastic waste and reduce emissions across its operations. As part of the Climate Action Plan 2026–2030, we will join the Single-Use Plastics Reduction Pledge, launched by London Councils' One World Living (OWL) programme, and pledge to eliminate problematic single-use plastics and transition to reuse in our operations and delivered services by 2030. With support from WRAP and ReLondon, the pledge provides the Council with the tools to take bold action on plastic waste. As part of the commitment, we will:

- Join the reuse knowledge exchange
- Eliminate problematic plastics
- Set up new reuse projects
- Work with suppliers to swap out unnecessary single-use items
- Develop a Camden-specific roadmap to support positive change

This pledge also supports our ambition to build a more circular economy - reducing waste, increasing sharing, and engaging with local institutions, businesses, and communities to promote reuse and resourcefulness.



Spotlight on.... Council Constitution



In 2020, Camden Council took a significant step to embed environmental responsibility into its decision making by amending its Constitution to require all Council decisions to "Protect and, if possible, enhance the natural environment to the benefit of the borough and its residents and act to mitigate and ensure resilience to climate change in recognition of the declared climate emergency."

As a result, decision reports and procurement processes now require an assessment of the environmental implications of projects and a remedy to any negative impact, with training available to staff and Councillors to support. This change helps to ensure that environmental considerations are not an afterthought but a core component of decision-making.



6.2.2 summary of outcomes and actions

Priority 2 Council Operations

Outcome	Actions
1. Council services understand the role their service plays in helping tackle the climate crisis - how they can reduce their emissions, how climate risks may affect service delivery and how to improve their resilience to the risk	1.1 We will ensure council staff have access to learning and development resources about the climate crisis. We will enable front-line staff to give advice to residents on how to take action, access support and protect themselves from climate hazards
	1.2 We will promote available resources, including Camden's Environmental Stewardship course, and conduct training sessions for council officers and elected Members to build a better understanding of how to limit the environmental impact of the Council's work
2. Environmental and climate-related risks and impacts are considered in all decisions that are made.	2.1 We will continue to use flood and heat risk data to support decision making across green space, transport and regeneration investment programmes
	2.2 We will ensure that all Council projects and programmes consider and limit their environmental impact and document the approach taken in all decision and procurement reports
3. Our fleet minimises its use of fossil fuel and increases opportunities to reduce vehicle use	3.1 We will deploy emissions free transport across our fleet wherever possible. For example, by using e-cargo bikes instead of cars or vans. We will also look at independent travel training for individuals on a case-by-case basis to reduce vehicle usage and promote independence
	3.2 We will make our vehicle fleet 100% low/zero emission by 2030 and ensure Contractors' fleet vehicles comply with Camden's Green Vehicle Fleet Procurement Policy.
4. Our procurement approach supports the priorities of this plan and social value from contractors and suppliers is maximised. Contractors and suppliers are encouraged to minimise their own emissions.	4.1 We will monitor and measure the carbon emissions from the Council's three highest impact contracts within our control and seek to drive emissions reductions annually
	4.2 We will reduce our own use of single-use plastic packaging in our operations and services, working collaboratively as part of London Council's One World Living programme by signing the Plastic Pledge
	4.3 We will ensure suppliers and contractors mitigate their environmental impact through the procurement process, including ensuring contract managers utilise the environmental impact learning resources to help drive this improvement. We will monitor the overall impact of large contracts via the social value tracker.
	4.4 We will ensure that food procured by the council promotes the provision of sustainable food (plant-based, seasonal, organic, locally-sourced as much as possible, ethically produced, with minimal artificial inputs)
5. We provide transparency on the divestment of our pensions	5.1 We will be transparent about our financial investments by providing an annual update on the level of fossil fuel divestment in Camden's pension fund.

6.2.2 summary of outcomes and actions

Priority 2 Council Operations

Outcome	Actions
6. We understand the vulnerability of our assets and services to climate risks and these risks are managed effectively, with robust emergency response for all foreseeable climate risks	6.1 We will reduce the vulnerability of our assets to climate hazards by undertaking climate risk assessments and embedding recommendations into our asset management strategy
	6.2 We will develop and implement an Adverse Weather Plan and an accompanying response protocol to ensure that all Council services prepare and can respond appropriately to extreme weather events.
	6.3 We will build the resilience of our services against climate risks by undertaking climate risk assessments and embedding recommendations into business continuity planning.
	6.4 We will ensure our emergency management procedures include communications that notify residents of extreme weather alerts and provide guidance about how they can protect themselves

6.3 Priority 3 - Local Circular Economy



6.3.1 Introduction

“ We support a local, zero waste, circular and sharing economy and reduce the borough's consumption emissions.

The CAP's ambition extends to the environmental impact of the things people in Camden buy, use, and throw away. This priority area focuses on building a local circular economy: one that keeps resources in use locally for as long as possible and extracts maximum value from them for the benefit of communities, businesses and the environment.

Consumption-based emissions - those associated with the production, transport, and disposal of the things citizens buy and services they use - are a major contributor to Camden's overall carbon footprint. While these emissions often occur outside the borough, they are driven by local demand. In fact, these indirect emissions are estimated to account for around two-thirds of London's total emissions, and Camden is no exception.

Camden has already taken important steps to reduce waste and promote circular practices. The borough is home to one of London's first Libraries of Things, where residents can borrow items like tools and appliances instead of buying new. Community Organisations like Fixing Factory and Lifeafterhummus, and community initiatives like Sharing Spaces have empowered communities to repair, re-use, and re-distribute goods - saving money and reducing waste.



However, there is still a long way to go. In 2023/24, Camden households generated over 55,000 tonnes of waste, with only 29% recycled. Food waste, single-use packaging, and fast fashion remain significant challenges. Businesses also play a key role here, with many seeking support to reduce waste and adopt more sustainable practices.

This priority area is about:

- Supporting community-led sharing and redistribution initiatives, in particular tackling food waste.
- Supporting changes to the local food system and promoting local healthy sustainable food choices
- Empowering businesses to adopt circular economy principles and share surplus resources with the community.
- Reducing waste and increasing reuse, repair, and recycling across households and businesses.
- By embedding circularity into everyday life, Camden can reduce its global carbon impact, build community resilience, and create a fairer, more sustainable local economy.



Spotlight on.... Food Mission and the Community Waste Café

Lifeafterhummus, a Community Benefit Society, already plays a vital role in the local community. They operate a social supermarket and re-use centre supporting 80 local households and run a redistribution network that supplies 11 local hostels, an after-school club, and a faith group.

In May 2025, Lifeafterhummus, in partnership with the Council, opened a community café at 5 Pancras Square library which is focused on combatting food waste by transforming surplus food from local businesses into nutritious and affordable plant-based meals.

The café provides the added benefit of work experience opportunities for young people in Camden.

The café is an example of a Camden's Food Mission initiative, which aims to transform the local food system to create a fairer, healthier, and more sustainable food environment for everyone in the borough.



Key facts:

- Camden households generated 55,000 tonnes of waste, with 29% of that recycled, reused or composted in 2023/24
- With 6,734 items borrowed from Kilburn and Kentish Town Library of Things since their launch, over £945,000 has been saved by the 2,929 people who have used the service. This translates to 47 tonnes of electricals reused and 138.2 tonnes of CO₂e saved.
- In 2024/25, we held 6 repair events with 46 household items being repaired, with Veolia, Fixing Factory, Think & Do

6.3.2 summary of outcomes and actions

Priority 3 Local Circular Economy

Outcome	Actions
1. Businesses in Camden minimise their waste, including food waste and use of single use packaging, and lower the environmental impact from their operations. Surplus resources are put to use wherever possible.	1.1 We will encourage and support businesses to adopt circular economy principles in their operations by sharing best practice, training and information.
	1.2 We will support businesses to access opportunities to minimise their waste and use of single use packaging, increase their re-use and recycling of materials. In particular we will target food waste reduction.
	1.3 We will facilitate the sharing of surplus resources from businesses to local community partners
2. Businesses invest in and support local community sharing, repair, re-use and waste reduction initiatives	2.1 We will connect businesses to local opportunities to support community-led sharing, repair, re-use and waste reduction initiatives
3. Residents are able to minimise and recycle their waste	3.1 We will support and enable residents and community groups to deliver waste minimisation projects with funding such as Camden Climate Fund, Veolia's Sustainability Fund and NLWA's waste prevention Community Fund
	3.2 We will share information, deliver events and workshops and undertake targeted promotion to drive waste reduction across the borough
	3.3 We will increase participation in recycling by providing clear information on the services and options available, through communications and targeted campaigns
4. Residents have access to healthy and sustainable local food options and can participate in community-led food related projects	4.1 We will promote food sharing tools and apps, and will continue to support and enable the delivery of community-led food distribution programmes such as Waste Cafe, LifeafterHummus, Kentish Town Veg Box and community kitchens
	4.2 We will work with partners and the community to reduce the environmental impact of the local food system including through the Food Mission
	4.3 We will support the consumption of healthy sustainable food including through ensuring that Camden's school catering contracts offer low carbon food options.
5. Residents have access to re-use and repair services so that the consumption of new goods is reduced.	5.1 Working with partners and the community, we will support and enable the delivery of sharing economy projects, services and events across the borough such as Lifeafterhummus, Sharing Spaces, Fixing Factory and Library of Things
	5.2 We will support the provision of accessible "sharing economy" focused services such Library of Things and the Fixing Factory in Council buildings

6.4 Priority 4 – Buildings & retrofit

6.4.1 Introduction

“ We ensure Camden’s homes, workplaces, schools and other community buildings are resilient to climate risks, energy efficient and help to provide energy security for occupiers.”

Buildings are at the heart of Camden’s climate challenge – and therefore a key opportunity. Around 84% of Camden’s direct emissions come from the gas and electricity used to heat and power buildings, with the commercial and industrial sector accounting for 58% and housing contributing 26%. Gas heating and power not only drives the climate crisis but also contributes to poor air quality.

Residents can also suffer from overheating homes during extreme heat events, and financial pressures can lead us to inadequately heat our homes in the winter.

This priority area focuses on transforming Camden’s built environment to be zero carbon, climate-resilient, and fit for the future. That means retrofitting existing homes and workplaces to reduce energy demand, generating and using renewable energy, switching to low-carbon heating systems, and securing the funding needed to facilitate this.





Spotlight on.... schools decarbonisation programme

- The decarbonisation programme for our own estate extends to our school buildings – improving their energy efficiency, switching to locally generated renewable energy and switching from gas to electric low carbon heating. We have £12.1 million has been spent or allocated to projects, and almost £3.55 million of that has come from winning government and Greater London Authority funding. This includes:
- Energy efficiency and low carbon heating upgrades at Acland Burghley School and Eleanor Palmer Primary, £1.3 million with £300,000 grant from government
- Energy efficiency and low carbon heating upgrades are currently underway at Hampstead School, £2.4 million with £1.3 million grant from government
- Retrofit and energy efficiency upgrades are currently underway at Brookfield Primary
- Planned energy efficiency retrofits at Primrose Hill Primary School, Brecknock Primary and Langtry Children Centre, Torriano Primary, Agar Children Centre, and Regent High School



Spotlight on.... Henderson Court energy sharing



A new energy-sharing technology launched in Camden in summer 2025. At Henderson Court we've installed over 300 solar panels and six Sol Share units. The system will take power from the panels and share it with around 70 homes, communal spaces, and wherever else power is needed across the block. The project will generate thousands of pounds of electricity each year. It's the first scheme of its kind in the borough - cutting bills and emissions to tackle the cost of living and the climate crisis. Elizabeth, a Henderson Court resident who will benefit from the scheme, said: "I had a very high bill last season; obviously one wants to be warm. And of course there is the thing of doing something for the environment."

- A total of 3,960 council homes are benefitting from completed or planned energy efficiency retrofit projects, supported by nearly £18.8 million in government and other grant funding secured by the Council to enable their delivery.



But the scale of the challenge is vast. Retrofitting all homes in Camden to zero carbon standards would cost an estimated £45,000 per household, and many buildings - especially older homes - face additional barriers such as heritage constraints or overheating risk. Homes in some areas of the borough are also more vulnerable to flooding.

This priority area is focused on:

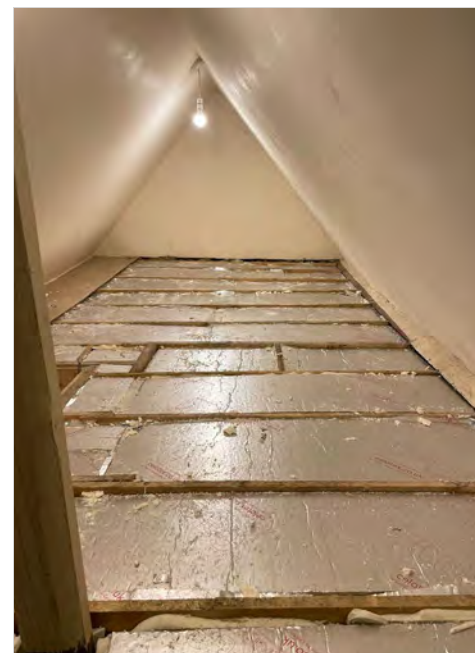
- Enabling the retrofit of homes and community buildings to be energy efficient and climate-resilient
- Promoting lower cost energy saving and resilience building solutions to make homes more comfortable and reduce bills
- Supporting businesses and schools to decarbonise and adapt their buildings.
- Expanding access to funding and support, especially for lower-income households.

By investing in Camden's buildings, we can reduce emissions, lower energy bills, improve health and comfort, and protect residents from the growing risks of extreme heat and flooding.

The need for this work is clear. According to the 2025 State of the Borough Report, 2 in 5 Camden children live in poverty, and fuel poverty affects 13.5% of households - making energy security and climate resilience urgent social justice issues.

We have already made significant progress:

- We provided residents with subsidised Whole House Retrofit Plans and collaborated with community groups like Retrofit Kentish Town to promote retrofit awareness.
- We have awarded over £400,000 through the Camden Climate Fund to support energy efficiency and renewable energy projects in homes, businesses, and community spaces. We piloted community-funded solar projects with Power Up North London.



- We launched new energy-sharing technology for 70 homes in a Council-owned housing block so that all residents can share power generated from solar panels on the roof of the block and benefit from lower electricity bills.



Key facts:

- Over 93,000 homes in Camden, over 56% people live in flats and over 50% were built more than 100 years ago
- Camden Council owns over 30,000 homes in the borough – a third of all homes
- 30% of homes are owned, 34% privately rented, 34% social rented
- A recent study by the University of East London which surveyed 1,580 households about the 2022 heatwave – when UK temperatures reached a record 40°C – found that 82% of households reported overheating. The study revealed a sharp rise in the use of air conditioning as a coping strategy, increasing from just 3% in 2011 to 20% in 2022, with 81% installing units between 2022 and 2023
- Flooding across Camden in 2021 affected over 100 homes and businesses, disrupting lives and our local economy.

6.4.2 summary of outcomes and actions

Priority 4 Buildings & Retrofit

Outcome	Actions
1. Businesses in Camden are powered by renewable energy, energy efficient and resilient to climate hazards	1.1 We will engage with and support businesses and the commercial sector to decarbonise and adapt their buildings including through promotion of the Camden Climate Fund
2. Camden's schools and health care buildings are energy efficient and resilient to climate hazards	2.1 We will seek funding and enable the delivery of school retrofit and renewable energy projects
	2.2 We will engage GP practices, hospitals and care homes to encourage the implementation of actions to improve the energy efficiency and climate resilience of their buildings
3. Funding is available to support energy efficiency improvements and low carbon heating system upgrades in all homes	3.1 We will enable energy efficiency improvements and installation of low carbon heating systems for lower income households by promoting available funding including the GLA's Warm Homes Local Grant
	3.2 We will seek funding including private institutional investment to help finance the retrofit of Council-owned properties.
4. Homes and community buildings in Camden are powered with renewable energy	4.1 We will support and enable community energy organisations and other resident led groups to install renewable energy and undertake energy efficiency projects through the Camden Climate Fund.
	4.2 We will test new delivery models to support the installation and generation of renewable energy on Council-owned homes via the Retrofit At Scale project which will deliver PV to 2700 units
5. Homes in Camden are energy efficient and adapted to be resilient to climate hazards	5.1 We will support and enable the improvement of home energy efficiency to all homes (cross-tenure) in Camden through our Camden Climate Fund and free pre-application development control service for Camden Climate Fund applicants.
	5.2 We will retrofit Council-owned properties to ensure they are fit-for-purpose and energy efficient and continue to seek funding to retrofit further homes
	5.3 We will improve the energy efficiency of Council housing communal heating networks
	5.4 We will support residents, prioritising lower income households, to save money on their bills and improve the energy efficiency and comfort of their homes (cross-tenure) through the provision of energy efficiency advice and support services
	5.5 We will undertake overheating risk assessments and consider appropriate interventions to reduce overheating when we carry out energy efficiency improvements to Council housing.
	5.6 We will enable, promote and support the installation of energy efficiency, retrofit and adaptation measures (including passive cooling and flood resilience solutions) to all homes (cross-tenure) in Camden
	5.7 We will improve the energy efficiency of Council-owned properties through the delivery of Better Homes and other Capital Works programmes



6.5 Priority 5 – Empowerment, education and communication

6.5.1 Introduction

“ We ensure everyone in Camden is empowered and educated to take action to help tackle the climate crisis, build their energy security and resilience to climate risks.

Climate action in Camden is not just about infrastructure and investment –the community is at its heart. This priority recognises that building community resilience is key - meaningful change happens when individuals and communities are informed, equipped, and inspired to act whilst improving their day-to-day lives. Whether it's understanding how to stay safe during hot weather, knowing how to reduce energy bills, or feeling confident to lead a local greening project, empowerment and education are central to Camden's climate response. London Councils' 2025 guidance on equity and climate action stresses that climate risks and social inequalities are deeply interconnected, and that empowering communities is essential to a fair transition.



Camden's community told us they want:

- Practical, accessible advice on how to take action and stay safe from climate hazards.
- Honest communication about what the Council, and other organisations, are doing.
- Opportunities to get involved in local projects and decision-making.

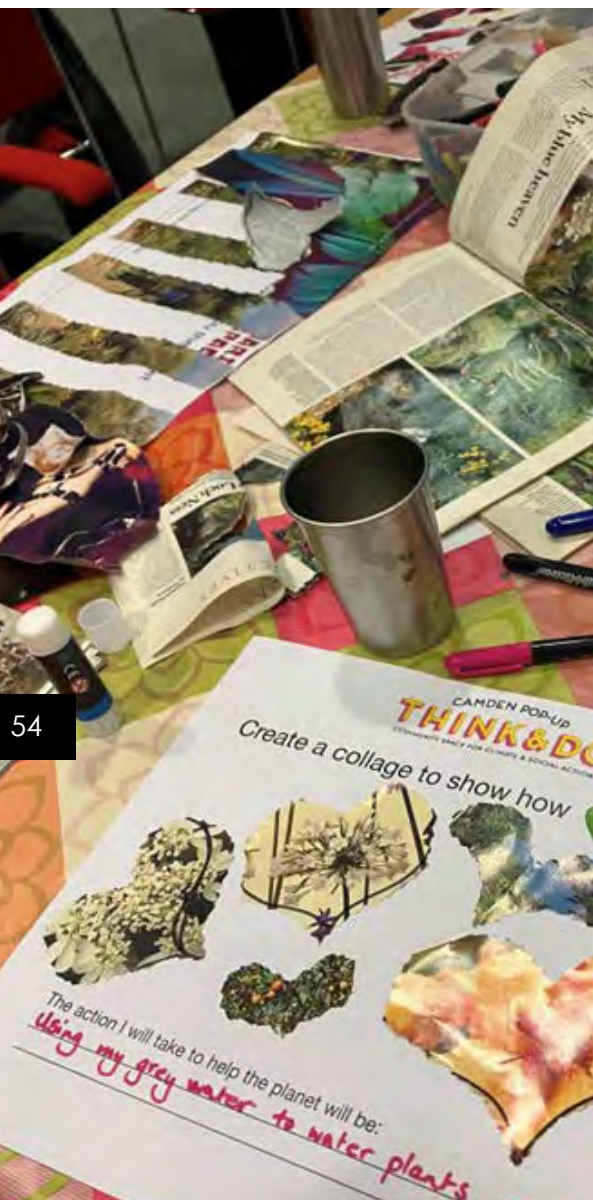
We are already empowering others:

- The Camden Climate Alliance has supported over 500 businesses to build their capacity to take climate action, offering training, resources, and peer learning
- The Euston Skills Centre delivers green construction training, helping residents access jobs in the low-carbon economy. This has included a foundation skills course delivered by Power Up North London in 2024 for local residents to provide them with home energy advice knowledge and show them pathways into further green training and jobs.
- Through the Climate Connectors programme, primary school students have a chance to develop and pitch their green ideas to business 'dragons' at the annual Green Dragons Den
- In 2025, the Council launched the Stay Cool campaign, providing targeted guidance and support to help the most vulnerable residents stay safe during extreme heat events.
- The Somers Town Future Neighbourhood programme has shown how climate action can improve the day-to-day lives of residents.



Key facts:

- Camden has a resident population of over 220,000. It has a much higher number of daily visitors however with many people working, studying or visiting the borough
- There are over 2,400 voluntary and community sector organisations
- Camden has nearly 37,000 businesses - the second highest number of businesses in London and the third highest in the UK. Camden has large employers but the majority are small with few employees – nearly 90% of businesses have less than 10 employees
- Camden has 12 public libraries and 11 higher education institutions
- Camden has 35 primary and 9 secondary schools - nearly 5,500 students travel into the borough to go to school
- 1 in 2 people in Camden believe people pull together to improve their neighbourhood
- 3% of residents are under the age of 30



This priority area is about:

- Building climate literacy - and dispelling climate myths - across communities, ensuring people understand the risks and solutions.
- Supporting schools, businesses, and professionals to take action and build resilience.
- Empowering vulnerable groups with targeted information and resources.
- Promoting green skills and career pathways, especially for young people.
- Creating accessible communication channels, using plain language and inclusive formats.

By embedding education and empowerment into every aspect of climate action, we can create a borough where everyone is informed, supported, and ready to shape a more resilient, inclusive, and sustainable future.



Key facts:

- The intensity and duration of heatwaves in Camden is expected to increase due to the climate crisis. In the past 60 years, the average heatwave days a year has increased from 6 to 18 days. Heatwaves in summer 2022 caused significant spikes in respiratory related hospital admissions and damaged infrastructure in Camden
- While everybody is at risk from the health consequences of heat, there are certain factors that increase an individual's risk during hot weather. These include older age, chronic illness, inability to change one's behaviour to keep cool (such as babies and the very young, those with a disability or Alzheimer's disease) and environmental factors (such as living in a top floor flat, being homeless or working outdoors or in a hot environment).
- The climate crisis is widening existing health inequalities, especially for those with pre-existing health conditions affected by extreme heat and cold

6.5.2 summary of outcomes and actions

Priority 5 Empowerment, education and communication

Outcome	Actions
1. Businesses have a good understanding of climate risks, and are empowered to take action to reduce their emissions and improve their resilience	1.1 We will support businesses to reduce emissions and build climate resilience through training, best practice sharing, engagement and signposting to available support
	1.2 We will collaborate with Business Improvement Districts to engage local businesses, coordinate climate initiatives, and share resources for greater impact
2. People in Camden are well-informed on what the Council and organisations are doing, and how the Council and organisations can support them to take action and protect themselves	2.1 We will make information about climate action, adaptation, resilience and health more accessible to all people living and working in Camden.
	2.2 We will be proactive and transparent in our communications with residents, providing regular updates on the climate programme and the Council's work to help tackle the climate crisis.
	2.3 We will provide practical advice and guidance on how the Council can support others to get involved, including through the Greener Camden website
	2.4 We will assess and certify local businesses through the Camden Climate Alliance Carbon certification scheme to recognise their climate efforts, encourage transparency, and build public awareness of organisational action on climate
	2.5 We will share news about how organisations are taking climate action to inform and inspire people living and working in Camden
3. Residents are empowered to take action in their neighbourhood to tackle the climate crisis and build community resilience to climate hazards	3.1 We will create pathways that support businesses in Camden to direct resources towards community and schools based climate action projects
	3.2 We will seek funding and provide guidance and information to help community groups improve their climate resilience
	3.3 We will enable community-led climate action by providing funding through the Camden Climate Fund
	3.4 We will take a place-based approach to project delivery, working with the community to tackle environmental challenges in a way that improves the day-to-day lives of residents locally.
	3.5 We will encourage behaviour change through Ecopoints
4. Residents have access to opportunities to build green knowledge and skills	4.1 We will support students in Camden schools to learn about careers in sustainability
	4.2 We will continue to offer green construction skills training through the Euston Skills Centre
	4.3 We will support and promote green skills training in the community including through the utilisation of the Camden Climate Alliance

6.5.2 summary of outcomes and actions

Priority 5 Empowerment, education and communication

Outcome	Actions
5. Residents most vulnerable and exposed to climate hazards are empowered to help protect themselves from climate hazards	5.1 We will use Camden Council's communication channels to disseminate guidance on preparing for and staying safe during extreme weather events.
	5.2 We will focus on health outcomes and ensure vulnerability, inequity and disproportionality is considered in strategy, policy and project development.
	5.3 We will help deliver, promote and expand "cool spaces" in Camden that can provide respite to the community during in hot weather.
	5.4 We will promote accessible water refill stations across Camden to help residents stay hydrated during periods of extreme heat
6. Residents, organisations and professionals understand the health impacts of climate hazards and are empowered to use this knowledge to protect themselves and others	6.1 We will provide community toolkits and share information on practical and accessible strategies for residents to bolster their resilience and take action to protect themselves against climate-related hazards, including raising awareness on the health impacts of climate risks such as extreme heat
	6.2 We will engage healthcare, social care, public health and frontline Council staff and encourage them to incorporate heat risk health advice into healthcare information and services, with a focus on vulnerable and exposed populations.
7. Schools and educational institutions are empowered to take action to tackle the climate crisis and build their resilience	7.1 We will support schools to develop and implement their own Climate Action Plans that improve the capacity of schools and pupils to reduce their environmental impact and adapt to climate hazards, including through the provision of guidance and toolkits and incorporating advice on protecting their school communities from the health impacts of climate hazards
8. We tackle dis and mis-information on climate science and the impacts of climate change	8.1 We will create new climate resources in libraries to help tackle mis- and dis-information about the climate crisis, as well as providing practical guidance on the actions residents can take.
	8.2 We will provide practical information on what people can do to take action and protect themselves from climate risks and how this can improve their day-to-day lives



6.6 Priority 6 – Greening & growing

6.6.1 Introduction

“ We create climate-adapted, resilient and biodiverse green spaces.

Nature is one of our greatest assets and is essential for helping the borough respond to the climate crisis and we recognised this fact when we declared a ecological and climate emergency in 2019. We need to work in a way that supports nature and helps nature adapt to the changing climate. Green spaces not only help to absorb carbon, they also help to reduce flood risk and cool Camden's streets during hot weather. Green spaces also provide opportunities for biodiversity and improve our physical and mental wellbeing. This priority area focuses on expanding and enhancing Camden's green infrastructure in a way that both helps protect us from the impacts of the climate crisis and ensures it is resilient to climate risks and accessible to all.



Camden is a densely built borough, with limited green space in some areas and significant disparities in access. According to the RAISE Camden Child Health Equity Audit, children in lower-income households are less likely to have access to safe, high-quality outdoor environments - despite being more vulnerable to the health impacts of the climate crisis. Greening our estates, streets, and neighbourhoods is therefore not just an environmental priority, but a matter of equity and public health.

We are already taking bold steps:

- The borough has increased tree coverage and is prioritising planting in areas more exposed to heat and where people have the least access to green space.
- The Council has a Biodiversity Action Plan which is supporting nature to adapt to climate change by enhancing habitats and improving ecological connectivity.

- We have been embedding new green infrastructure, including rain gardens, tree pits, and sustainable urban drainage systems (SuDS), into our transport and green spaces investment programmes helping to manage surface water and reduce urban heat.

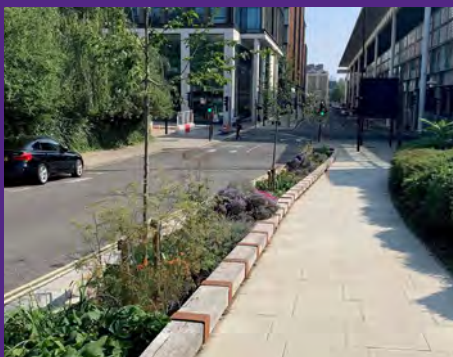
The need for this work is urgent:

- Camden has experienced three major flood events in the past 50 years, and climate change is increasing the frequency of intense rainfall.
 - The urban heat island effect makes Camden significantly warmer than surrounding rural areas during heatwaves, with some neighbourhoods facing temperatures up to 5°C higher.
 - Biodiversity is under pressure, with local species being affected by hotter weather, and their habitat being broken up.
- Expanding and enhancing green spaces across the borough, especially in areas where residents have limited access.
 - Increasing tree planting and promoting biodiversity to improve shade and climate resilience.
 - Supporting community-led greening and food growing, empowering residents to shape their local environment.
 - Integrating nature-based solutions into infrastructure programmes to manage flood risk and overheating.
 - By investing in greening and growing, we will help to create a borough that is not only more climate-resilient - but also healthier, fairer, and more beautiful for everyone.





Spotlight on.... Camley Street Sustainable Urban Drainage



The southern end of Camley Street has an increased risk of flooding. A Sustainable Drainage System, in the form of a 2m wide, 180m long rain garden, was designed, and installed in 2020. This provides reduced flood risk, reduced reliance on the sewer network, biodiversity enhancement and greater contact with nature for pedestrians.



Spotlight on.... Abbey Green and Mortimer Estate Community Orchard

In 2024, a total of 82 fruit trees, including apples and pears, were planted across eight locations in the Abbey and Mortimer Green estates in Kilburn. These trees not only aesthetically improve the area but also contribute to urban biodiversity and provide fresh, local produce for residents.

The orchards have already begun producing fruit, and residents participated in harvesting the fruit.

The initiative is managed by Think & Do Camden, an organisation focused on community-led projects, with funding support from the KOKO Foundation. The project was developed in collaboration with the Tenants' and Residents' Association (TRA) and estate residents. Their input helped shape the orchard's layout and care plan, fostering a sense of ownership and community involvement.



A unique feature of the project is its employment of young residents (aged 16-25) from the estate, who are being paid to maintain the orchards over the first two years. After this period, the estate's Grounds Maintenance team will take over responsibility, ensuring long-term sustainability of the orchards project.



Key facts:

- The Council's Green space team manages 76 parks and over 300 green spaces across the borough. Camden is also home to world-famous parks such as Regent's Park and Hampstead Heath
- Camden has the highest percentage of tree canopy cover in London at 28.36%
- 39% of households in Camden have no access to private green space
- Camden has 18 community gardens, 25 raised beds & orchards on Council housing estates, 4 formal allotments and 5 food growing areas in Council managed parks
- We have invested £230,000 over the last two years in a borough-wide food-growing programme, removing barriers and making food growing more accessible

6.6.2 summary of outcomes and actions

Priority 6 Greening & Growing

Outcome	Actions
<p>1. Camden has a network of green spaces and green infrastructure which reduces flood risk and urban heating, increases resilience to a changing climate and supports nature to thrive and cope with the effects of the climate crisis</p>	<p>1.1 We will continue to implement Local Plan policy to conserve and enhance the natural environment and therefore improve opportunities to experience nature where they are lacking.</p>
	<p>1.2 We will implement a Green Infrastructure Strategy that embeds climate resilience into the design and planning of investment programmes including green spaces, transport, and Community Investment Programme projects.</p>
	<p>1.3 We will continue to plant trees in line with the new Tree Planting strategy to increase tree canopy cover, promote diverse tree species, and prioritise planting that supports wildlife while preserving ancient and veteran trees.</p>
	<p>1.4 We will continue to deliver the Biodiversity Action Plan to support nature to cope with the effects of climate change – enabling nature respond to severe weather events and to colonise new areas.</p>
	<p>1.5 We will continue to review and adapt our green space maintenance regimes in response to climate hazards as well as ensure ongoing maintenance is considered in the design and implementation of new greening across Camden.</p>
	<p>1.6 Using a data-led approach, we will increase the area of sustainable urban drainage in Camden through our healthy streets and green space investment programmes</p>
	<p>1.7 We will establish and utilise a Nature Recovery Network for Camden, focusing on protecting and enhancing designated sites, and expanding green and blue corridors for habitat improvement and connectivity.</p>
<p>2. Camden's estates and neighbourhoods are green and resilient, and adapted to provide protection to people from climate hazards. Residents can also participate in greening and growing activities locally</p>	<p>2.1 We will support and encourage 'greening the grey' activities across Camden, for example by promoting the cooling benefits of maintaining greening within front and back gardens and de-paving hard standing areas.</p>
	<p>2.2 We will use climate risk data in the identification and prioritisation of tree planting locations in order to increase shade and protect residents during extreme weather events</p>
	<p>2.3 We will increase the area, climate resilience and sustainability of green spaces on Camden housing estates where feasible and where funding allows for installation and ongoing maintenance of new green spaces</p>
	<p>2.4 We will explore opportunities for community-led greening and gardening initiatives on estates, neighbourhoods and public spaces to enable residents and community groups to help in the creation and maintainance of green spaces locally (for example through forming a Camden Nature Partnership and extending nature conservation volunteers programmes to support with the maintenance of existing and new green space).</p>

6.6.2 summary of outcomes and actions

Priority 6 Greening & Growing

Outcome	Actions
3. Residents have access to food growing spaces and can participate in local food growing initiatives in settings and formats suitable to them	3.1 We will promote the benefits of food growing and signpost to guidance on how to maximise positive impacts on the environment and encourage biodiversity by following nature-friendly practices on food growing
	3.2 We will enable local food growing activities across Camden by connecting residents to local food growing opportunities and providing an accessible process for residents looking to create new food growing spaces. Food growing will be integrated into existing Camden services where appropriate to do so (e.g. in schools and libraries)
4. The local economy supports local green infrastructure, and greening and growing investment across Camden	4.1 We will promote and enable opportunities for businesses to support and collaborate with local schools and community groups on resilience-building tree planting, greening and growing projects.
	4.2 Working collaboratively through BIDS, we will encourage and explore opportunities to support businesses and major landowners in Camden to install and maintain green infrastructure that improves the climate resilience of Camden

6.7 Priority 7 – Sustainable travel

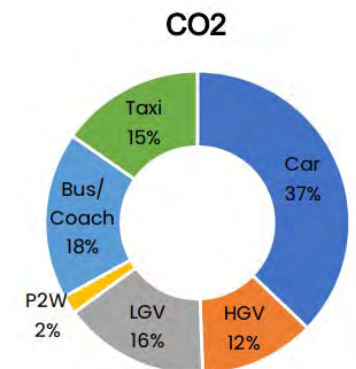


6.7.1 Introduction

“ We enable active travel and healthy lifestyles in a climate resilient public realm and reduce transport emissions.”

Transport is one of the most visible and impactful areas of climate action. In Camden, while transport accounts for around 16% of borough-wide carbon emissions, it also contributes to air pollution, and ultimately to public health inequalities. This priority area focuses on reducing transport emissions while creating safer, greener, and more accessible streets that support active lifestyles and climate resilience.

Carbon Dioxide emissions by type of road vehicle





Camden has long been a leader in sustainable transport. Camden was the first London borough to introduce Healthy School Streets and continues to transform our streets and expand our network of segregated cycle lanes, green mobility hubs, and Safe and Healthy Streets.

The Council has already delivered:

- Over 40 Healthy School Streets have been implemented, reducing vehicle use and improving safety around schools.
- The borough has installed more than 500 electric vehicle (EV) charging points so far
- Camden now has 27km of segregated cycle lanes with plans to expand further
- Through the Safe and Healthy Streets programme, Camden is redesigning neighbourhoods to prioritise walking, wheeling, and cycling.
- The Holborn Liveable Neighbourhood and Bloomsbury Vision projects are piloting climate-resilient street design, including shading and green infrastructure.

- Camden's Freight and Servicing Action Plan is helping businesses reduce vehicle use and shift to cleaner delivery methods.

The need for action is clear:

- Air pollution is the largest environmental risk to health in Camden, contributing to respiratory and cardiovascular conditions, particularly among children and older adults.
- The borough's streets are vulnerable to overheating and surface water flooding, with the climate crisis expected to increase the frequency and severity of these hazards.
- Private car ownership is low in the borough (around 33% of households), yet road vehicles still dominate street space - highlighting the opportunity to re-allocate space for people and nature.
- Freight and servicing vehicles account for 17% of Camden's road traffic but contribute 28% of transport-related emissions, highlighting the importance of targeted action in this sector.

This priority area is about:

- Enabling more people to walk, wheel, and cycle safely and confidently across the borough.
- Expanding access to shared and public transport, reducing reliance on private vehicles.
- Integrating green infrastructure into transport schemes to reduce climate risks and improve wellbeing.
- Supporting businesses and residents to reduce vehicle use through incentives, infrastructure, and education.
- Ensuring Camden's streets are inclusive, accessible, and climate-ready -designed for everyone.

By transforming how people move through the borough, this priority area supports a healthier, fairer, and more climate-resilient borough - where streets are not just for transport, but for thriving communities.





Key facts:

- Transport is a major contributor to poor air quality in the borough. Approx 30% of NOx emissions and 20% particulates come from road transport. Tackling transport carbon dioxide emissions will have an added benefit of improving air quality and helping to deliver on our commitment to achieve WHO standards by 2030. More information is available in our Clean Air Action Plan.
- TfL manage the bus network in Camden- only 6% of Camden's bus routes are fully electric compared to 19% when all London bus routes are considered.
- Car ownership in Camden has reduced by 21% between 2016 and 2023
- 87% of trips in Camden are now made sustainably — with 52% by walking, 30% by public transport, and 5% by cycling.



6.7.2 summary of outcomes and actions

Priority 7 Sustainable Travel

Outcome	Actions
1. Our streets are green, safe, accessible and healthy. They are adapted to help manage flood and overheating risks, and protect people from these hazards	1.1 We will continue to use climate risk data and Healthy Street Checks to ensure that transport and healthy streets projects improve Camden's climate resilience
	1.2 We will ensure that green infrastructure - such as parklets, rain gardens and tree pits - is incorporated into new transport and healthy street schemes wherever practical
	1.3 We will work with external partners and third parties, including utilities companies, to identify opportunities to incorporate green infrastructure into statutory works projects on the highways
	1.4 We will pilot shading and other overheating measures within Holborn Liveable Neighbourhood and Bloomsbury Vision project to ensure that streets remain accessible for all people in a changing climate
2. Residents, businesses and visitors are able to walk, wheel and cycle, and access public and shared transport and shared mobility schemes on safe, healthy and climate friendly streets	2.1 We will increase the number of safe and healthy cycle routes across Camden including a provision of segregated cycle lanes
	2.2 We will deliver at pace timed closures outside schools in feasible locations, and "main road" school streets where traffic restriction measures are not feasible through the Healthy School Streets programme
	2.3 We will deliver transformational Safe and Healthy Streets programme in our neighbourhoods across Camden prioritising active travel
	2.4 We will continue to create spaces on streets for shared mobility services (Green Mobility Hubs) including a range of shared transport options and urban greening
	2.5 We will offer active travel services, information and training, through the Healthy Travel Choices programme to enable residents, schools and businesses to travel safely and confidently throughout the borough
3. Residents, businesses and visitors are supported and enabled to reduce their use of vehicles	3.1 We will regularly review and amend parking permits and prices to reflect the climate emergency
	3.2 We will encourage businesses to re-mode to reduce their vehicle use including through the promotion of re-modelling and alternative transport schemes and incentives and through the delivery of the Freight and Servicing Action Plan
	3.3 We will encourage residents and businesses to switch from private car ownership to using car clubs and car sharing schemes in Camden
4. Residents, businesses and visitors have access to public electric vehicles charging points	4.1 We will increase the number of public electric vehicle (EV) charging points across Camden in line with our EV Action Plan.

7. How will we get there?

7.1 Monitoring and reporting

7.2 Financing the plan

7.1 Monitoring and Reporting 7.2 Financing the Plan

Delivering a fair and effective response to the climate crisis requires transparency, accountability, and continuous learning. We are committed to tracking progress against this Climate Action Plan and sharing that progress openly with residents, businesses, and partners.

We will:

- Develop a new iteration of the Climate Citizen Panel to provide a way for citizens to help review and advise on the progress of the Plan and ensure we continue to embed engagement at the heart of our Climate programme.
- Publish an annual Climate Action Plan progress report, highlighting achievements, challenges, and key data across all seven priority areas.
- Continue to borough-wide emissions using the latest data from the Department for Energy Security and Net Zero (DESNZ) and the London Energy and Greenhouse Gas Inventory (LEGGI).
- Monitor Council emissions through publishing an annual carbon footprint
- Use outcome-based indicators to measure progress on resilience, equity, and other co-benefits - not just carbon.

- **Camden, like all local authorities, is facing significant financial pressures.**

Over the past 15 years, local authorities across London and the rest of England have been facing growing financial pressures and uncertainties. A combination of sustained cuts to central government funding since 2010, the uncertainties and disruption of events such as Brexit, the COVID-19 pandemic and the cost of living crisis, and more recently, increases in inflation and demand for statutory services such as homelessness and social care, has created a challenging financial environment.

The cumulative impact has been stark. Seven local authorities have issued Section 114 notices, meaning they are effectively declaring bankruptcy. In 2025/26, 30 councils are due to receive Exceptional Financial Support from central government, including seven London boroughs. Even beyond those councils in acute need of additional support, financial pressures remain high. London Councils estimate that

London's 33 local authorities face a £500m funding shortfall for 2025/26.

Camden is not in the extreme position of many other councils. This is due to our long-standing commitment to robust financial planning, preventative services, and purposeful investment. By strengthening our asset base and focusing on outcomes, we have protected our financial resilience while continuing to deliver for residents.

- **The cost of achieving zero carbon and building resilience is significant:**

As we move into the next 5 years of climate action, our climate budget and analysis of achieving a zero carbon borough highlight the huge scale of investment required. We also know from our community conversations that the cost of living is impacting residents' daily lives and the costs of achieving zero carbon cannot be passed onto our residents - but we have also heard that climate action, when designed well, can help people financially.

At the same time, the cost of inaction on climate adaptation is rising. We know from our work under the previous Climate Adaptation and Resilience Plan 2023-2025 there is a need for sustained investment to protect residents, infrastructure, and services from the impacts of extreme heat, flooding, and other climate risks. Funding for flood risk mitigation is available through the Government's Flood and Coastal Erosion Risk Management Programme, with additional contributions from the Thames Regional Flood and Coastal Committee, Thames Water, and the Greater London Authority and we will continue to access these sources wherever possible.

[1] [Exceptional Financial Support for local authorities for 2025-26 - GOV.UK](#)

[2] [£330m homelessness overspend as housing crisis threatens to bankrupt London boroughs | London Councils - Home](#)

We are also taking the approach of embedding climate resilience into existing green spaces and transport investment programmes to achieve cost-effective resilience outcomes through nature-based solutions that green the grey. Nature-based solutions are a key part of our approach - they are up to 50% more cost-effective than artificial alternatives and deliver greater added value - such as improved air quality, biodiversity, and community wellbeing. Projects like Holborn Liveable Neighbourhoods demonstrate how we are working with businesses and institutions to deliver climate resilience at scale.

However, despite these efforts, there is limited funding available for other forms of adaptation - particularly for retrofitting existing buildings and supporting vulnerable residents. Camden will continue to work with other London boroughs and the GLA to advocate for new funding streams to support local adaptation and resilience.

- **A purpose-led framework for investment with a proven track record**

Our first Climate Action Plan provided a clear, purpose-led framework for borough-wide climate action. It has helped to unlock over £32 million in external investment and grants since 2020 - supporting projects from building retrofit and renewable energy to sustainable transport and community-led initiatives.

It also enabled us to trial new forms of finance such as local carbon offsetting, municipal bonds and social financing of renewable energy.

This new Climate Action Plan builds on that foundation. It provides a refreshed framework to attract further investment – supported by our Local Area Energy Plan and preparations for opportunities that may arise from the Government's proposed Heat Network Zoning. We will also expand our community energy programme and continue to seek opportunities for developers to help decarbonise Camden.