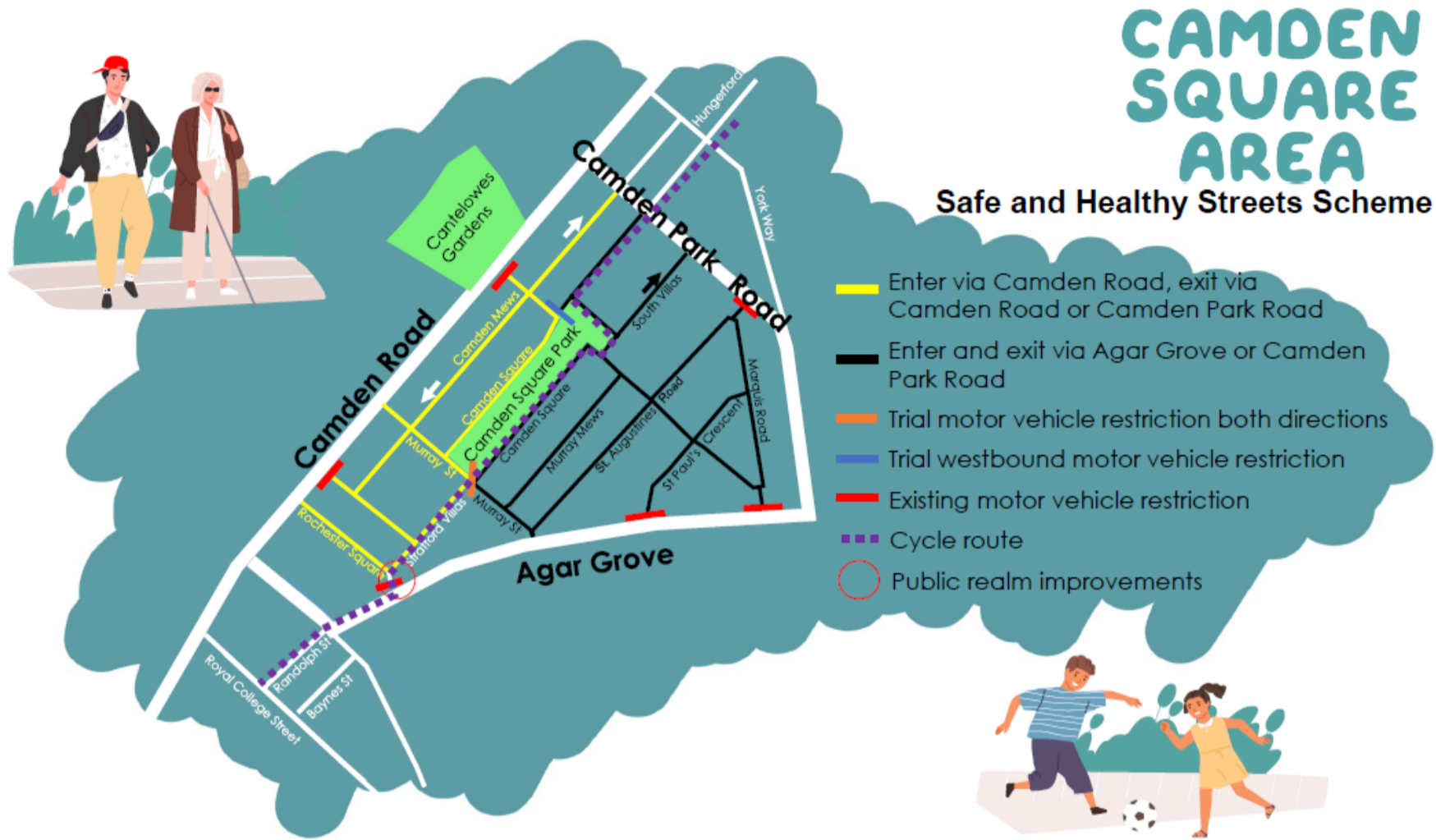


The enhanced proposals for the Camden Square area has some key differences to the trial scheme. However the proposed enhancements aim to retain the benefits of the trial scheme such as improved air quality, less motor vehicle traffic and increased levels of cycling while also taking on board the feedback from the community.

The primary difference between the trial scheme and the enhanced proposals are listed as follows:

- A new layout of the motor vehicle restriction on Murray Street and Camden Square

ETO scheme



Proposed Amended Murray Street motor vehicle restriction

