

# PEDESTRIANISING

# CAMDEN HIGH STREET



## Improving Camden High Street

Camden High Street is at the heart of Camden as a shopping and transport hub for locals and a world-famous destination for tourists. It is an iconic destination with up to 40,000 visitors at any one time. Pavements can become congested and overcrowded, often people end up walking in the road. Combined with high levels of motor traffic, this can lead to situations where pedestrians are sharing the road with motor vehicles. This can negatively affect visitors' experience of Camden High Street.

The section of Camden High Street between the Camden Town Tube Station and Hawley Crescent is a gateway to reach Camden Lock, its world-famous markets and many of Camden's bars, restaurants, and music venues. That's why we believe this area could be transformed to provide a more welcoming and safer environment for residents and visitors alike.

## Our proposals

We are proposing to create a motor traffic free section of Camden High Street – from the junction with Parkway and Kentish Town Road, to the junction with Jamestown Road and Hawley Crescent. We propose to trial this change over a maximum of 18 months to create a safer, healthier, and more enjoyable Camden High Street.

The new pedestrianised space on the High Street would also create the opportunity to expand cultural activities onto the street, bringing together Camden's diverse communities to celebrate the things that make Camden Town both a local and a global neighbourhood. We plan to work with residents, cultural institutions, businesses, and other stakeholders to curate a programme for how this space could be used during the trial.

## Consultation and Engagement

### Consultation - Trial Scheme July-August 2024

**Trial period starts**  
If a decision is made to proceed, the trial scheme would be introduced via an Experimental Traffic Order (ETO). The ETO would be in place for 18 months, creating a traffic-free section of the High Street. During this period, there would be ongoing monitoring of the impacts of scheme and engagement with the local community and businesses.

**Cultural programme on High Street**  
During the trial, we would test different ways to use and improve the pedestrianised space. This could include community events and activities organised in partnerships with local stakeholders.

**Consultation - Permanent Scheme**  
After 12 months, there would be a full review of the impacts of the scheme using data and feedback collected. There would also be another consultation on whether or not to make the scheme permanent. The trial scheme would remain in place until the decision about the permanent scheme was made.

\* timelines are subject to change.

## Take part in our consultation

We are seeking your views on the proposed changes, including how the creation of new space for pedestrians would affect you and how we can shape the proposal to improve your experience of Camden High Street.

We also would like to learn what you think is important about Camden High Street and how the pedestrianisation can enhance the area's unique identity. We hope to bring the new pedestrian space to life with cultural events, activities and public art that reflects the local area, supports local businesses and makes the High Street safer and more accessible. We want to work with you to shape what cultural events or activities could be possible that would represent what you would like to see on the High Street.

## SHARE YOUR VIEWS

Our consultation is open for responses until 30th August 2024. Share your views on the future of Camden High Street by scanning the QR code with your phone or by visiting our consultation website to learn more information about the proposals and to respond to the consultation:

[camden.gov.uk/consultation](https://camden.gov.uk/consultation)

If you don't have access to the internet or need this information in another format such as braille, large print, or in a different language, please call or email us.

020 7974 4444  
CHS@Camden.gov.uk



# PEDESTRIANISING

# CAMDEN HIGH STREET

## AIMS

### Celebrating Camden Town's uniqueness

We want to celebrate and enhance Camden's history, cultural, and social heritage and hope to use the trial to create space for community events and public art in collaboration with local cultural, and community organisations.

### Safer, healthier and more attractive

We hope that the trial would make Camden High Street safer and healthier and more attractive for residents and visitors with more space for people walking and wheeling.

### Supporting the High Street

We hope to encourage people to spend more time on the High Street, enjoying the diverse range of businesses and attractions on offer both during day and night.

### Accessible and inclusive

During the trial, we want to improve people's experience of the High Street whether they are walking or wheeling. We want everyone to feel safe and welcome and hope to test new ways to create a friendlier, inclusive High Street.

### Collaborating with local stakeholders

We hope to collaborate with local residents, cultural and business partners to create a Camden High Street that brings people together and that locals can be proud of.

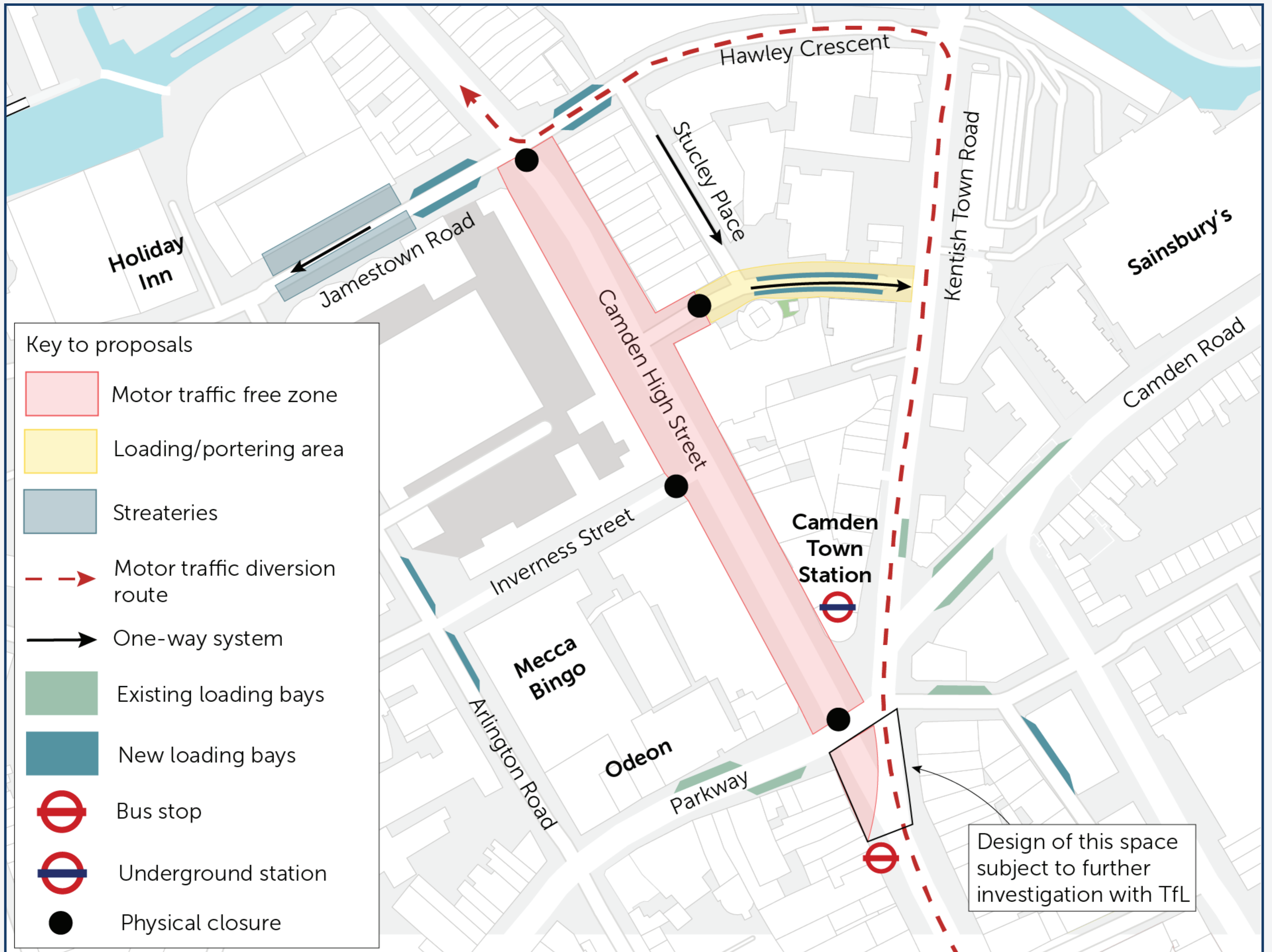
**SHARE YOUR VIEWS**

For more details and to help shape our plans for Camden High Street - fill out our consultation survey  
- closes 30th August



# PEDESTRIANISING

# CAMDEN HIGH STREET



## What are we proposing for Camden High Street?

- Motor traffic free space from the junction with Parkway and Kentish Town Road, to the junction with Jamestown Road and Hawley Crescent. This means there would be no access to motor vehicles at any time of day, any day of the week, except for emergency services and some refuse collection vehicles. Northbound cycling would be permitted.
- Traffic, including buses, would travel along Kentish Town Road and Hawley Crescent.
- New loading and delivery areas are proposed on roads surrounding Camden High Street to support local businesses.
- Making Jamestown Road one way westbound for motor traffic, from the junction with Camden High Street (except cycles) and creating space for streateries (areas in the road for businesses to use for outside seating), planting.

## Why are we proposing to trial removing traffic from the High Street?

Camden High Street is an iconic destination with up to 40,000 visitors at any one time.

Pavements can become congested and overcrowded, often people end up walking in the road. Combined with high levels of motor traffic, this can lead to situations where pedestrians are sharing the road with motor vehicles. This can negatively affect visitors' experience of Camden High Street.

We want our streets to have more safe space for everyone to walk and cycle, for businesses to be able to flourish, for children to get to and from school safely and healthily, to reduce harmful emissions from vehicles, and for you to be breathing cleaner air.

Creating pedestrian-friendly spaces has lots of benefits including:

- Creating a safer and more enjoyable environment for pedestrians
- Making it safer to travel and encouraging more active and sustainable travel, like walking, wheeling or cycling
- Encouraging people to spend more time on the High Street and support local businesses
- Making the High Street healthier by improving local air quality and reducing danger from motor vehicles

**SHARE YOUR VIEWS**

For more details and to help shape our plans for Camden High Street - fill out our consultation survey

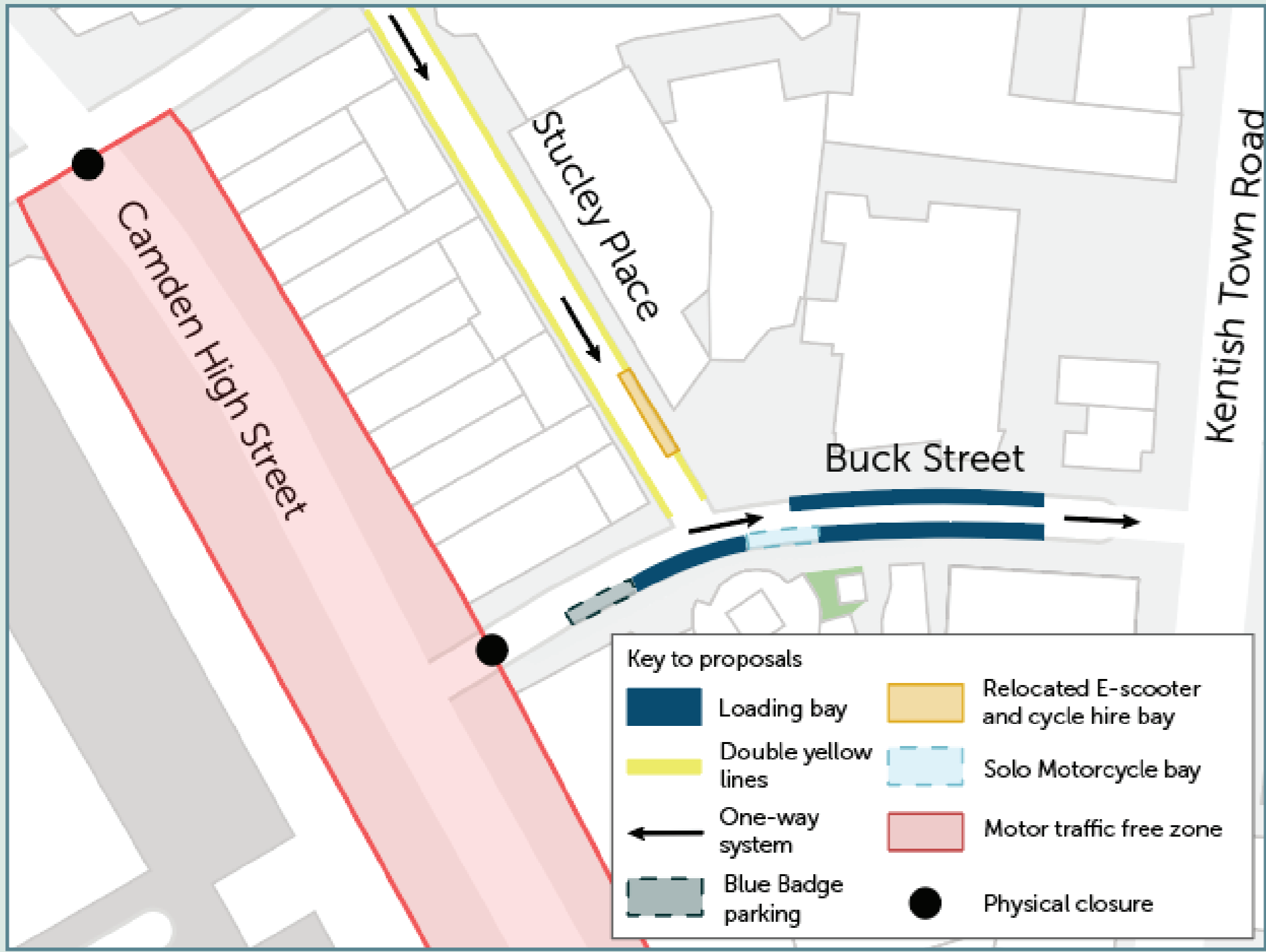


- closes 30th August



# PEDESTRIANISING

# CAMDEN HIGH STREET

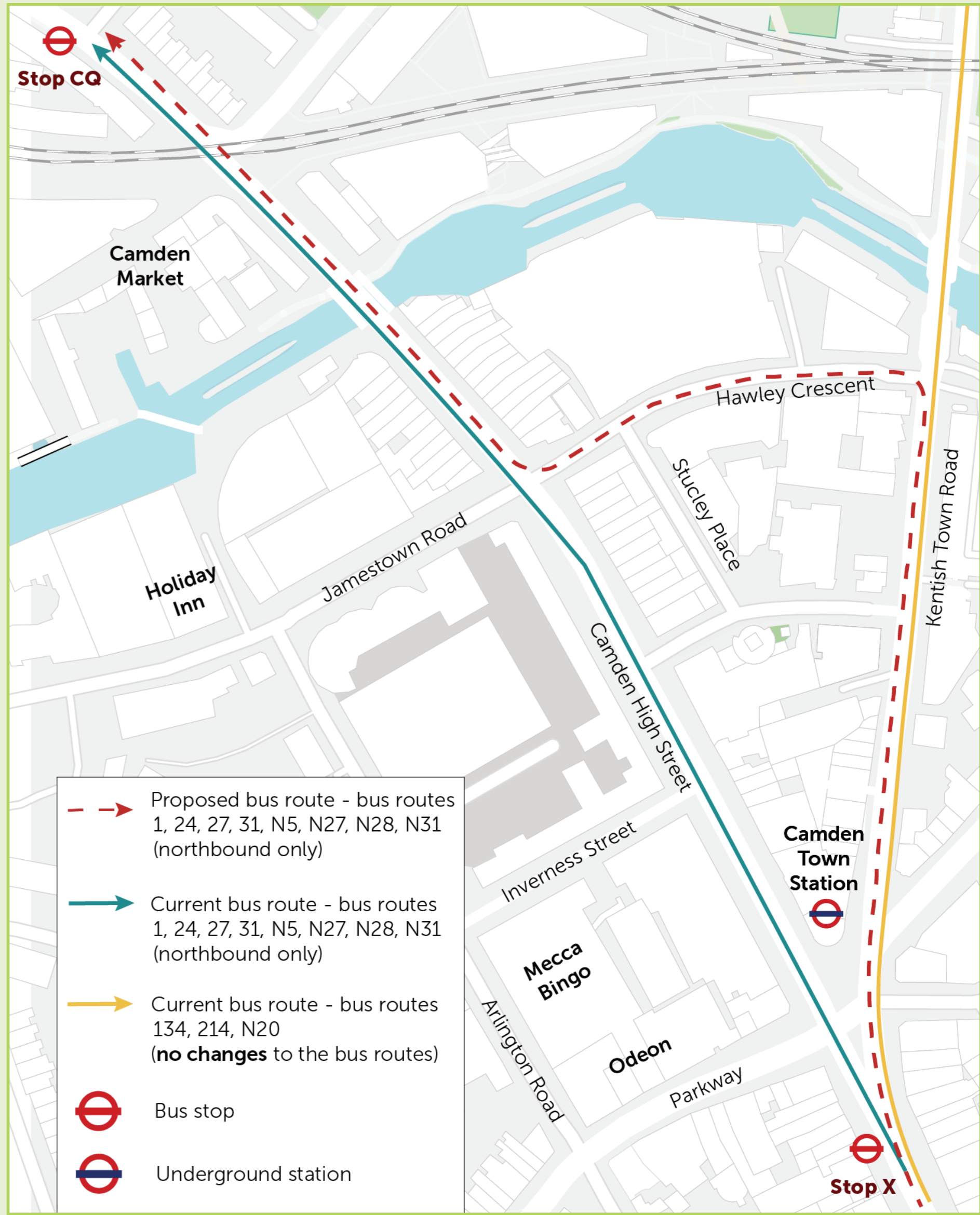


## How would businesses and residents get deliveries?

We are proposing several new loading bays on roads near Camden High Street to create more space for delivery vehicles.

We are proposing that Buck Street becomes an area for loading and portering\*, where goods can be dropped off and then transported to businesses and residents using smaller walkable trolleys. Motor vehicles would be able to enter Buck Street from Hawley Crescent (via Stucley Place). Deliveries would be made in new loading bays on Buck Street with motor vehicles exiting onto Kentish Town Road. This route would be one-way (see map above) to allow for the smooth flow of traffic and the existing road closure between Buck Street and Kentish Town Road would be reopened.

\*portering - a drop off point for deliveries to a certain area, where they can be temporarily stored, sorted and then delivered by foot-based porters to local addresses



## How would buses travel through the area?

Bus services currently using Camden High Street would travel along Kentish Town Road and Hawley Crescent, where they would re-join the High Street.

At the moment, buses travel from Stop X direct to Stop CQ without a break in the journey. As there are no stops on the bus routes that travel through the proposed traffic-free section of Camden High Street, under our proposals buses would continue to travel from Stop X to Stop CQ without stopping at any new bus stops.

## Improvements to Jamestown Road

Businesses on Jamestown Road have told us they would like a nicer street environment with more opportunities for outdoor dining.

We are looking at improving Jamestown Road by making the road one way (west bound) providing more space for plants and Streateries - outdoor seating areas where people can enjoy food from their favourite local hospitality offer.

Paid parking bays would be converted into loading bays which would enable local businesses to receive deliveries.

A contra flow cycle lane would be introduced to allow for two way cycling.

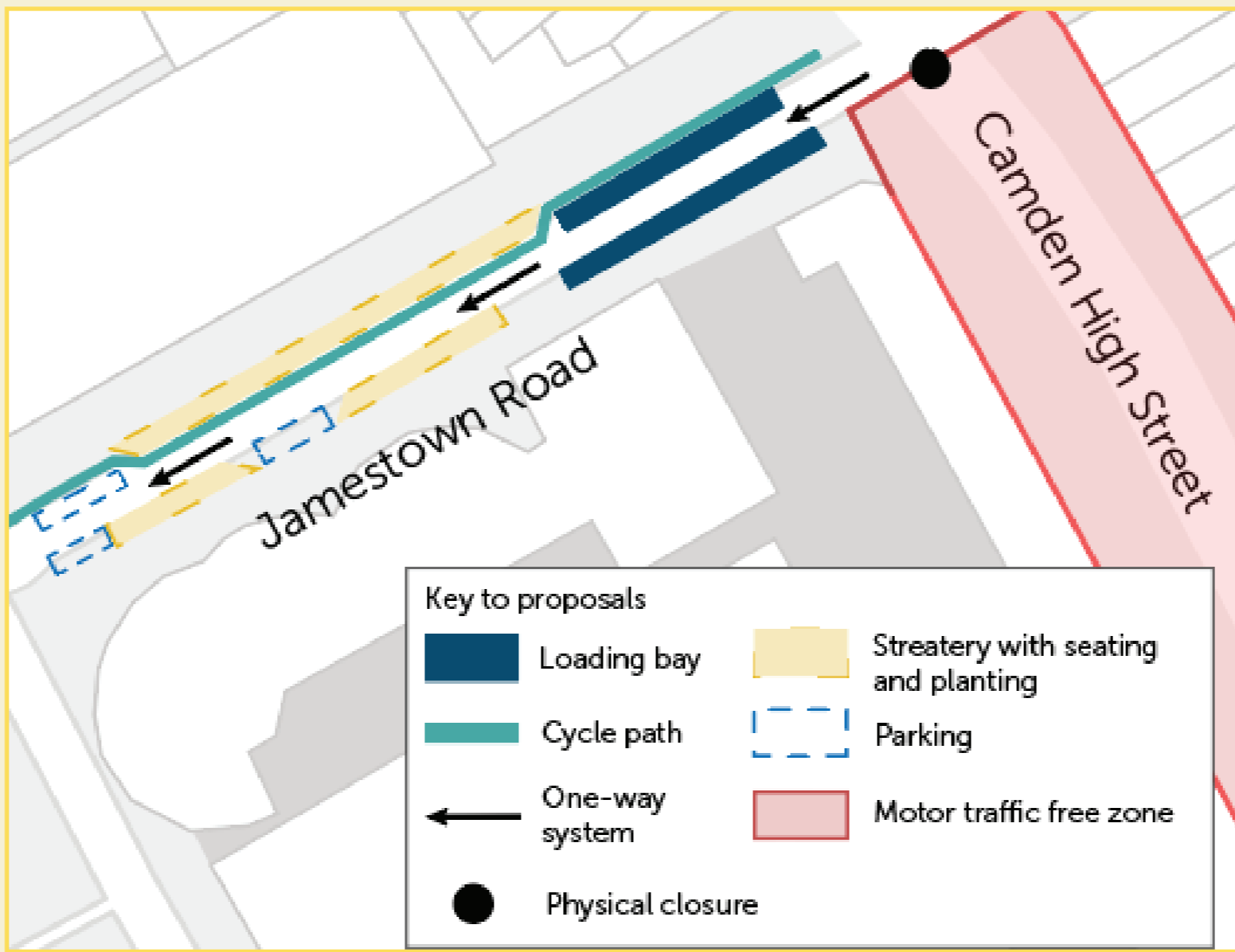
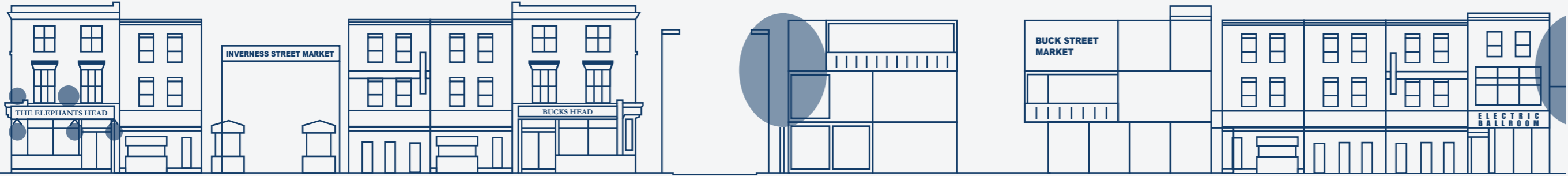


Image shows an example of streateries on Charlotte Street, W1T 2LY, temporary seating areas with planting maintained by local businesses. Specific design proposals for Jamestown Road would be subject to design and feasibility studies and images above are for demonstration purposes.



**SHARE YOUR VIEWS**

For more details and to help shape our plans for Camden High Street - fill out our consultation survey - closes 30th August



# WHAT IF...?

Camden High Street had more space for people to walk? Had more activities and events for local residents to enjoy? Had public art that celebrated local culture? Had more planting or more seating for businesses?

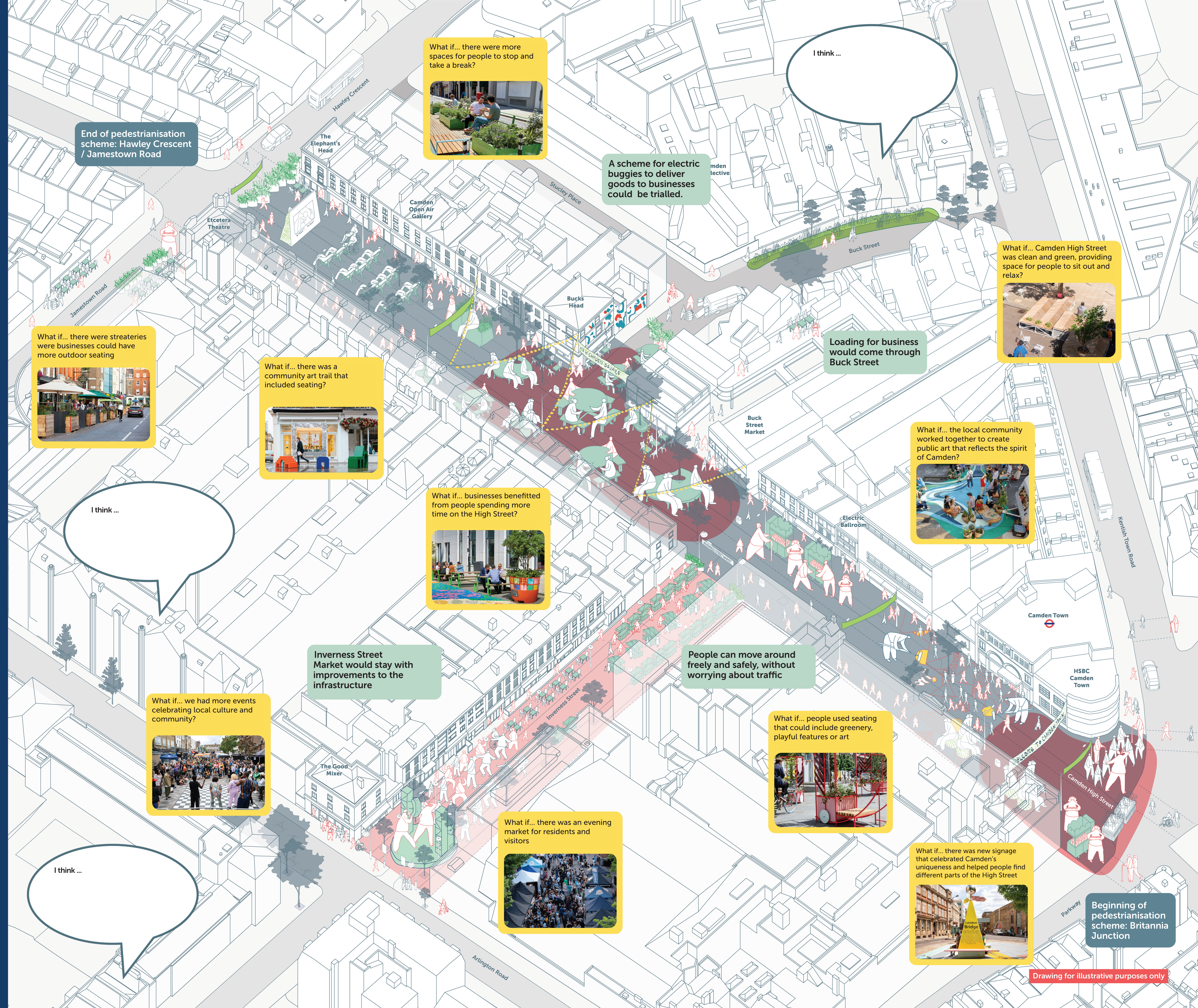
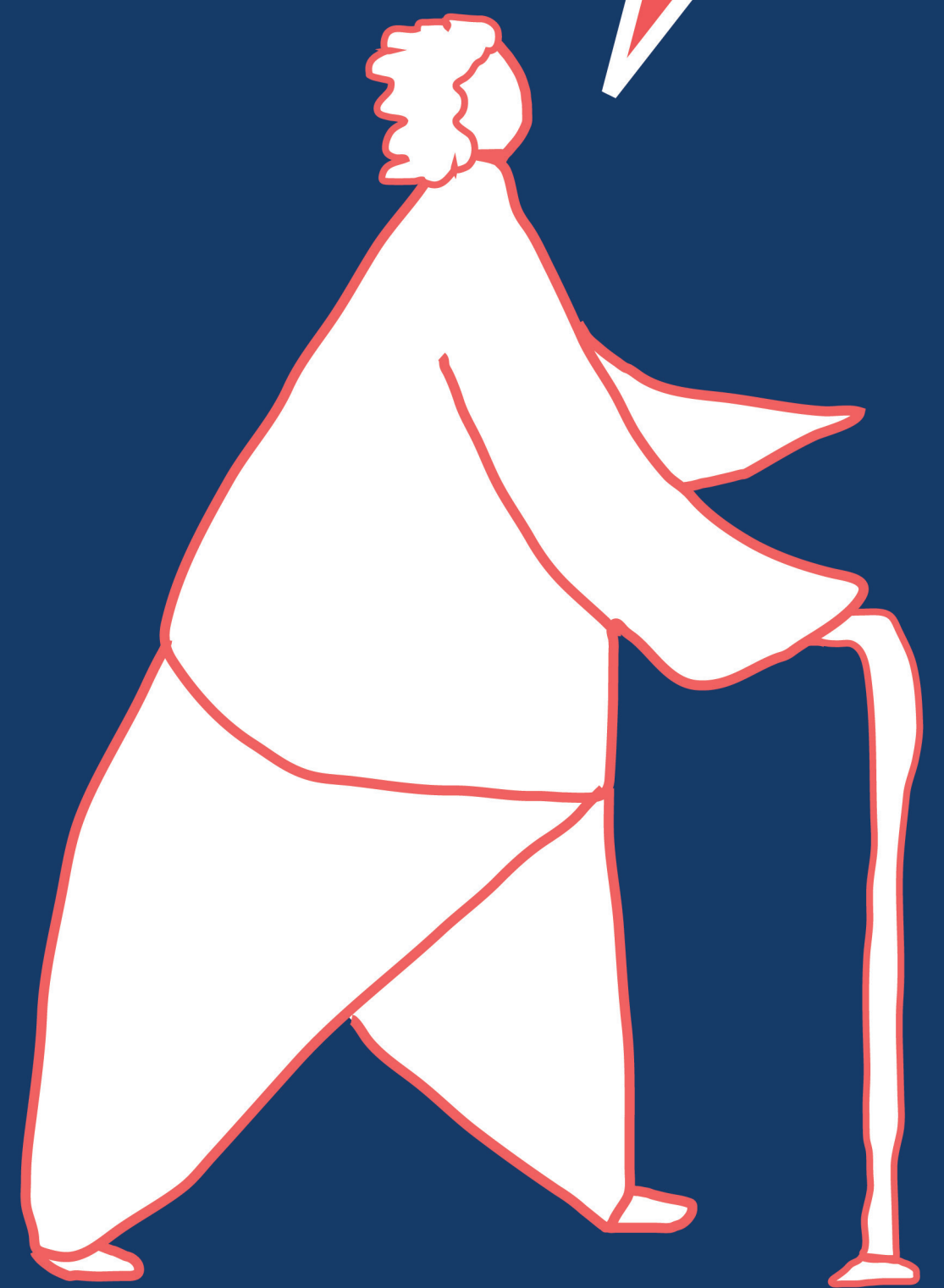
During the trial period there would be no permanent changes to the roads or pavement on the high street, but if the high street is closed to traffic, it opens opportunities for the reclaimed road space to be used in different ways.

We would like to take an opportunity to test different temporary activities and additions to the street that celebrate the culture of Camden Town and make the high street safer and more welcoming.

We would look to work with local residents and groups, businesses, and cultural organisations, to identify funding and deliver projects that support the high street.

What would you like to see?

**SHARE  
YOUR  
VIEWS**



End of pedestrianisation scheme: Hawley Crescent / Jamestown Road

What if... there were more spaces for people to stop and take a break?



A scheme for electric buggies to deliver goods to businesses could be trialled.

I think ...

What if... Camden High Street was clean and green, providing space for people to sit out and relax?



What if... there were streeteries where businesses could have more outdoor seating



What if... there was a community art trail that included seating?



Loading for business would come through Buck Street

What if... the local community worked together to create public art that reflects the spirit of Camden?



I think ...

What if... businesses benefitted from people spending more time on the High Street?



People can move around freely and safely, without worrying about traffic

What if... we had more events celebrating local culture and community?



Inverness Street Market would stay with improvements to the infrastructure

What if... people used seating that could include greenery, playful features or art



I think ...

What if... there was an evening market for residents and visitors



What if... there was new signage that celebrated Camden's uniqueness and helped people find different parts of the High Street



Beginning of pedestrianisation scheme: Britannia Junction