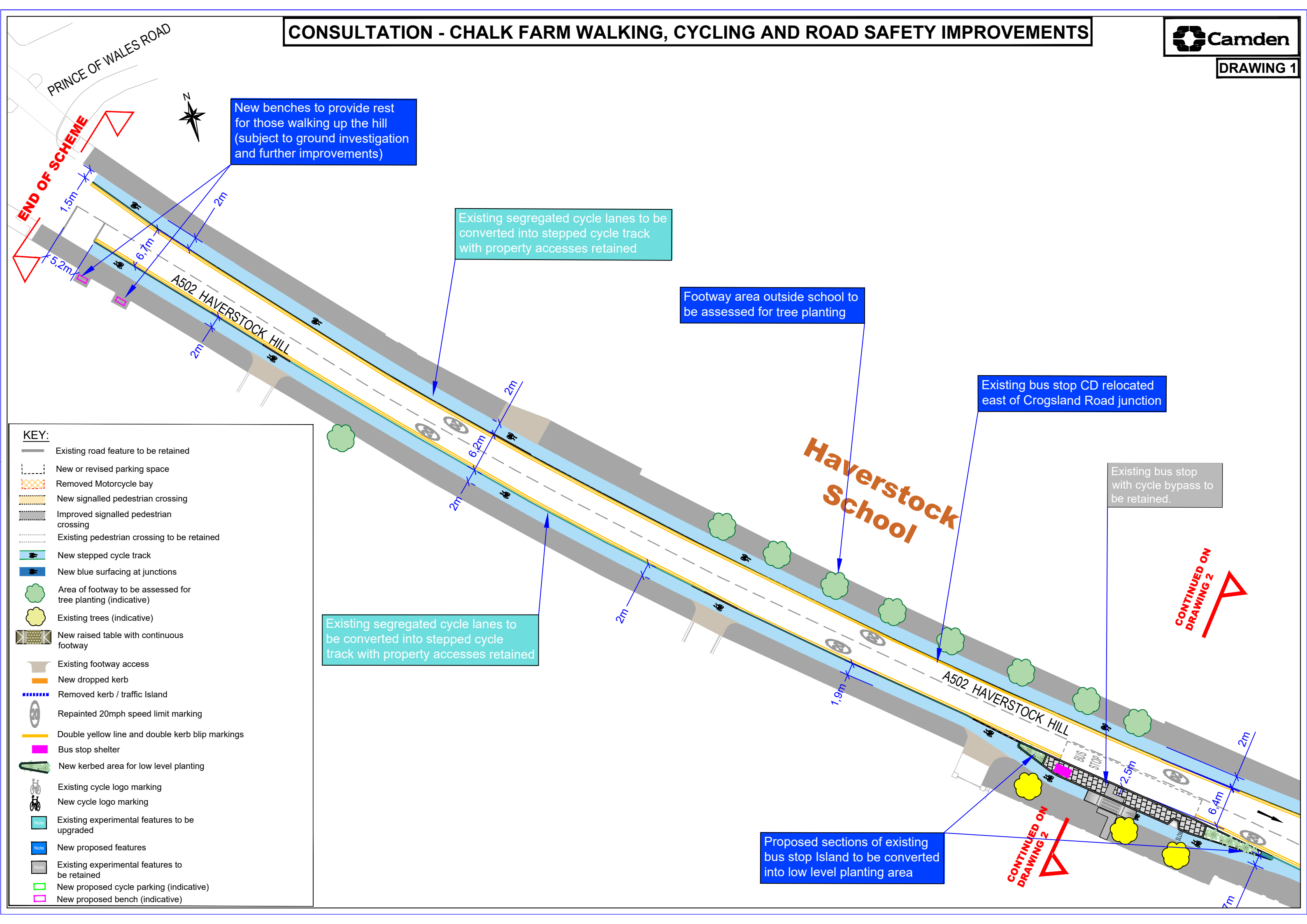


CONSULTATION - CHALK FARM WALKING, CYCLING AND ROAD SAFETY IMPROVEMENTS



New benches to provide rest for those walking up the hill (subject to ground investigation and further improvements)

Existing segregated cycle lanes to be converted into stepped cycle track with property accesses retained

Footway area outside school to be assessed for tree planting

Existing bus stop CD relocated east of Crogsland Road junction

Existing bus stop with cycle bypass to be retained.

Existing segregated cycle lanes to be converted into stepped cycle track with property accesses retained

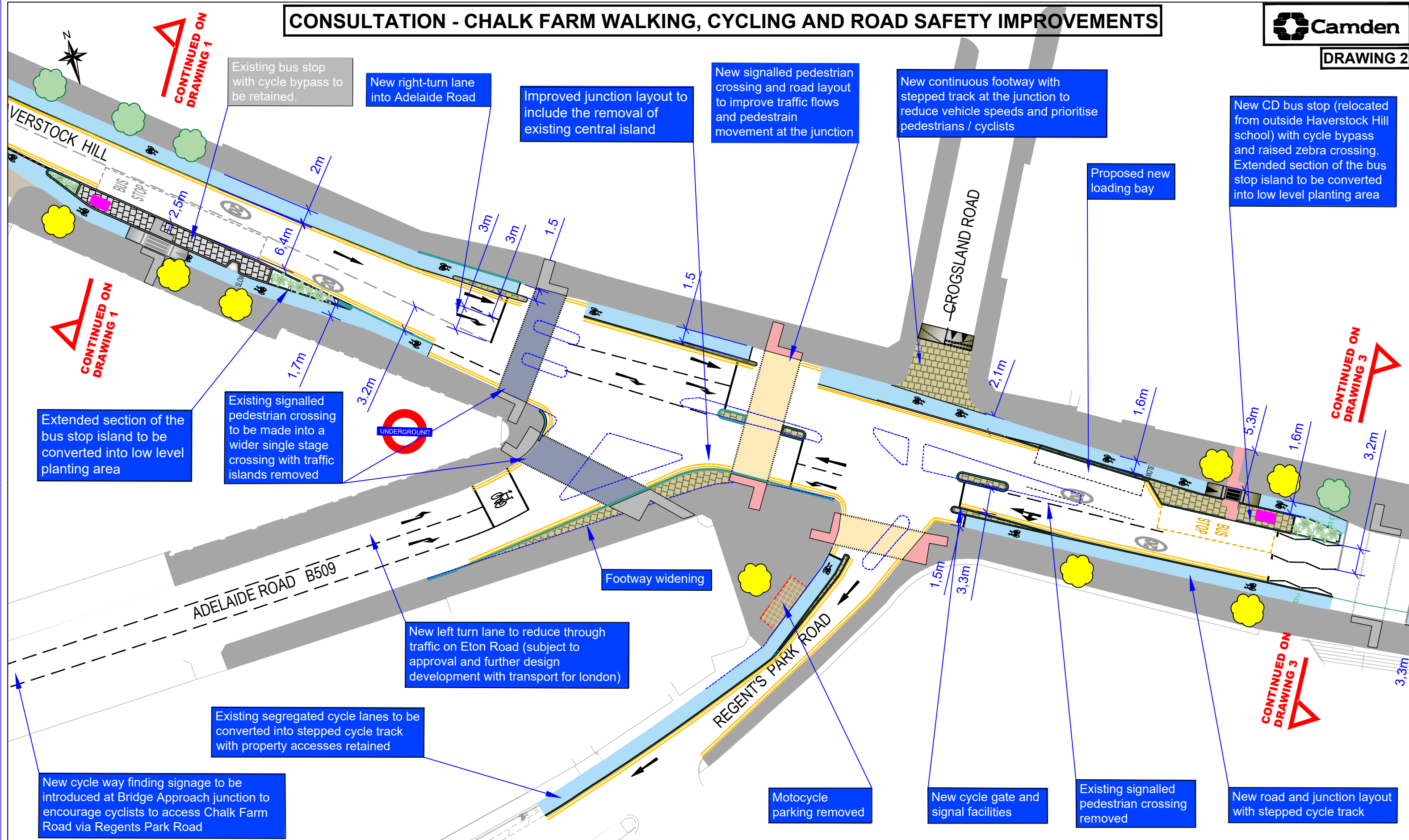
Proposed sections of existing bus stop Island to be converted into low level planting area

- KEY:**
- Existing road feature to be retained
 - New or revised parking space
 - Removed Motorcycle bay
 - New signalled pedestrian crossing
 - Improved signalled pedestrian crossing
 - Existing pedestrian crossing to be retained
 - New stepped cycle track
 - New blue surfacing at junctions
 - Area of footway to be assessed for tree planting (indicative)
 - Existing trees (indicative)
 - New raised table with continuous footway
 - Existing footway access
 - New dropped kerb
 - Removed kerb / traffic Island
 - Repainted 20mph speed limit marking
 - Double yellow line and double kerb blip markings
 - Bus stop shelter
 - New kerbed area for low level planting
 - Existing cycle logo marking
 - New cycle logo marking
 - Existing experimental features to be upgraded
 - New proposed features
 - Existing experimental features to be retained
 - New proposed cycle parking (indicative)
 - New proposed bench (indicative)

CONTINUED ON DRAWING 2

CONTINUED ON DRAWING 2

CONSULTATION - CHALK FARM WALKING, CYCLING AND ROAD SAFETY IMPROVEMENTS

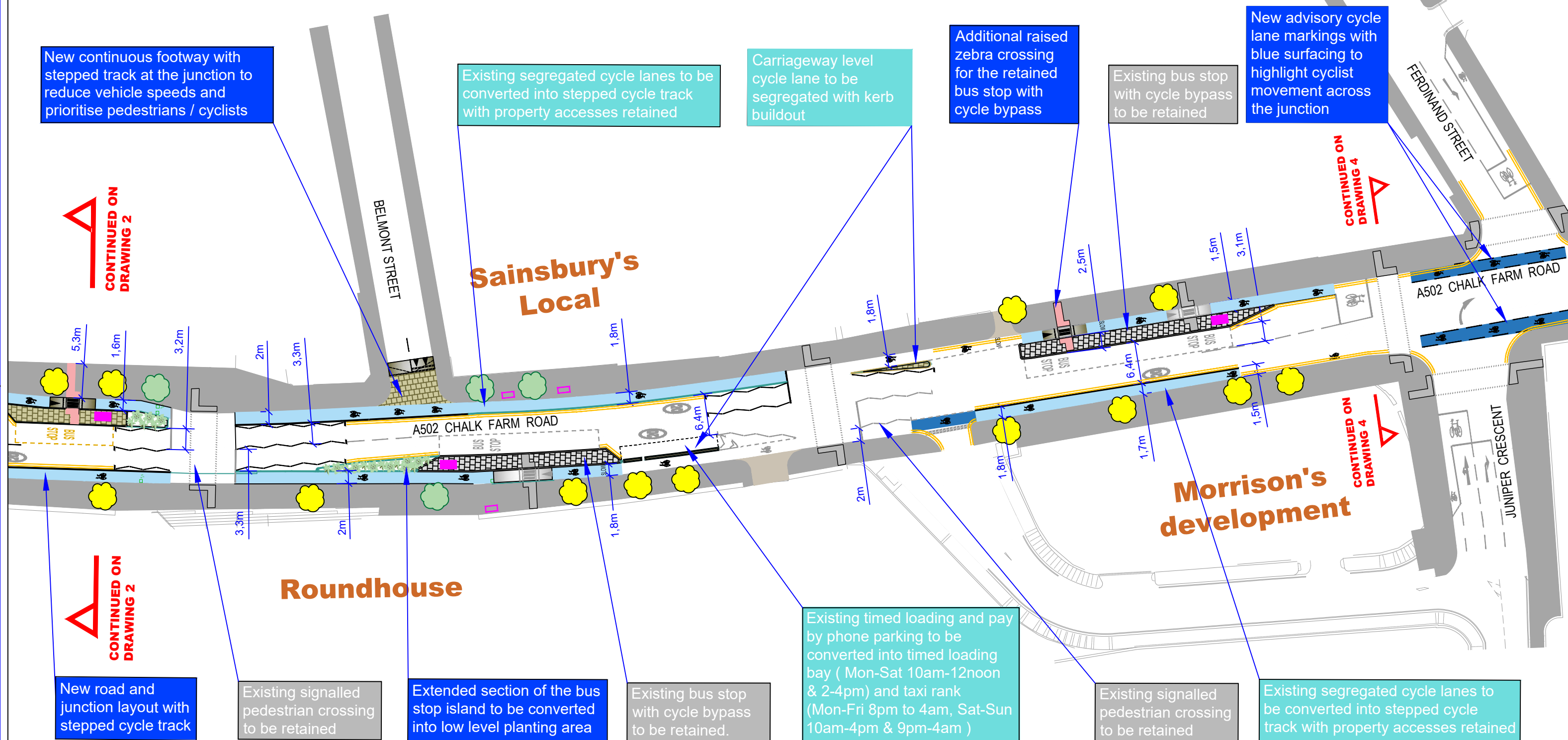


KEY:

	Existing road feature to be retained		Area of footway to be assessed for tree planting (indicative)		Existing 20mph speed limit marking		New kerbed area for low level planting
	New or revised parking space		Existing trees (indicative)		Existing cycle logo marking		Existing experimental features to be upgraded
	Removed Motorcycle bay		Existing footway access to be retained		New cycle logo marking		New proposed features
	Improved signalled pedestrian crossing		New raised table with continuous footway		Double yellow line and double kerb blip markings		Existing experimental features to be retained
	New signalled pedestrian crossing		New or relocated bus stop shelter				New proposed cycle parking (indicative)
	New stepped cycle track with cycle logos						New proposed bench (indicative)
	New blue surfacing with cycle logos at junctions						
	New dropped kerb						
	Removed kerb / traffic island						



CONSULTATION - CHALK FARM WALKING, CYCLING AND ROAD SAFETY IMPROVEMENTS



KEY:

- Existing road feature to be retained
- New or revised parking space
- Removed Motorcycle bay
- Improved signalled pedestrian crossing
- New signalled pedestrian crossing

- Existing pedestrian crossing to be retained
- New stepped cycle track with cycle logos
- New blue surfacing with cycle logos at junctions
- New dropped kerb
- Removed kerb / traffic island

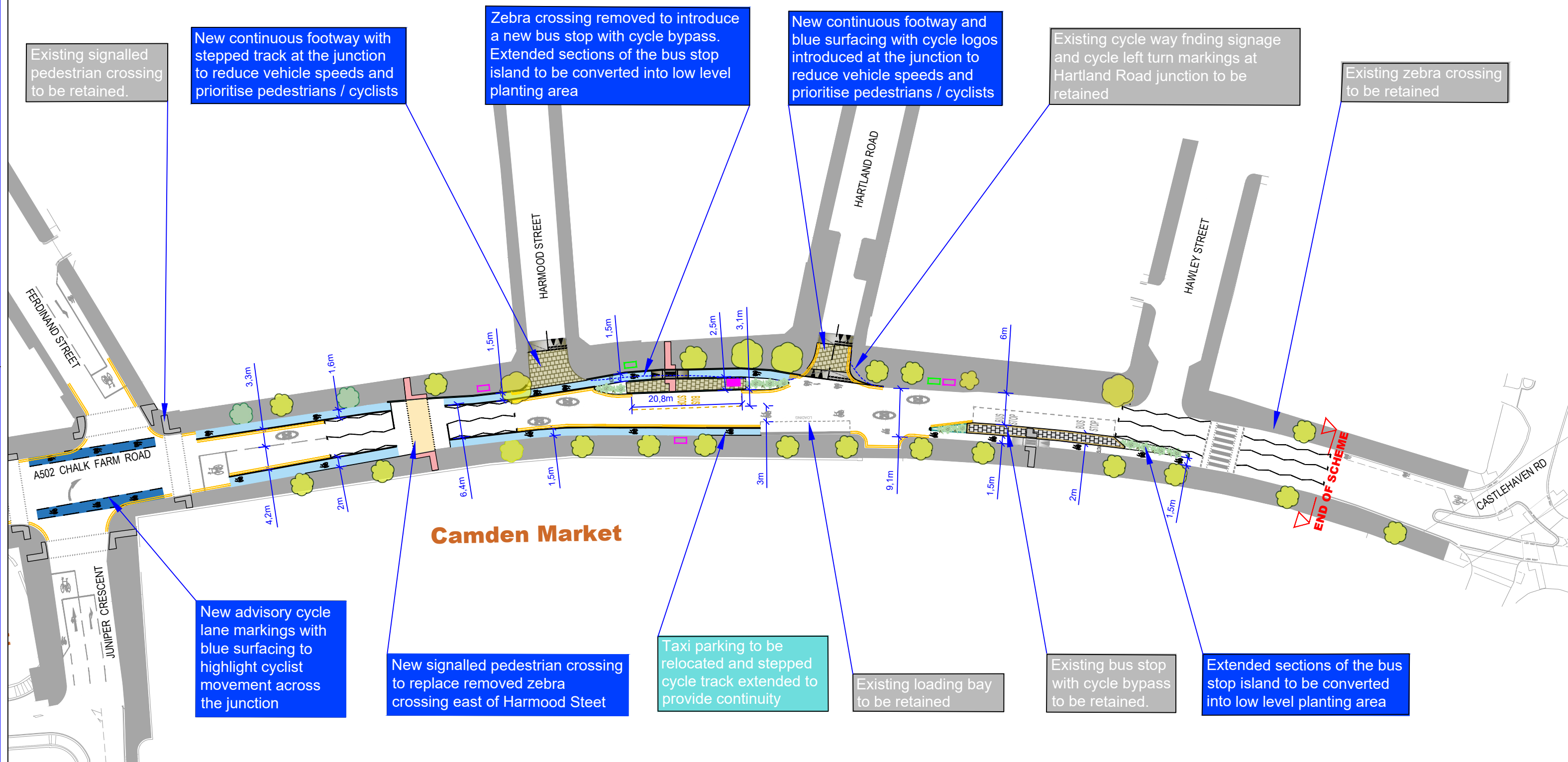
- Area of footway to be assessed for tree planting (indicative)
- Existing trees (indicative)
- Existing footway access to be retained
- New raised table with continuous footway
- New or relocated bus stop shelter

- Existing 20mph speed limit marking
- Existing cycle logo marking
- New cycle logo marking
- Double yellow line and double kerb blip markings

- New kerbed area for low level planting
- Existing experimental features to be upgraded
- New proposed features
- Existing experimental features to be retained
- New proposed cycle parking (indicative)
- New proposed bench (indicative)



CONSULTATION - CHALK FARM WALKING, CYCLING AND ROAD SAFETY IMPROVEMENTS



KEY:

- Existing road feature to be retained
- New or revised parking space
- Removed Motorcycle bay
- Improved signalled pedestrian crossing
- New signalled pedestrian crossing

- Existing pedestrian crossing to be retained
- New stepped cycle track with cycle logos
- New blue surfacing with cycle logos at junctions
- New dropped kerb
- Removed kerb / traffic island

- Area of footway to be assessed for tree planting (indicative)
- Existing trees (indicative)
- Existing footway access to be retained
- New raised table with continuous footway
- New or relocated bus stop shelter

- Existing 20mph speed limit marking
- Existing cycle logo marking
- New cycle logo marking
- Double yellow line and double kerb blip markings

- New kerbed area for low level planting
- Existing experimental features to be upgraded
- New proposed features
- Existing experimental features to be retained
- New proposed cycle parking (indicative)
- New proposed bench (indicative)