

Overview

We'd like to hear your views on our suggested changes on how we manage motor vehicles (cars and motorcycles) parking in Camden. This includes how we charge for parking and some of the terms and conditions of our parking products.

We want our parking policies to create healthier streets, reduce harmful emissions and allow a fairer distribution of the kerbside (the space on the road along the edge of the pavement). Owning and using a motor vehicle impacts everyone who lives in or visits Camden, so we are seeking the views of everyone even if you don't own a car, van or motorbike.

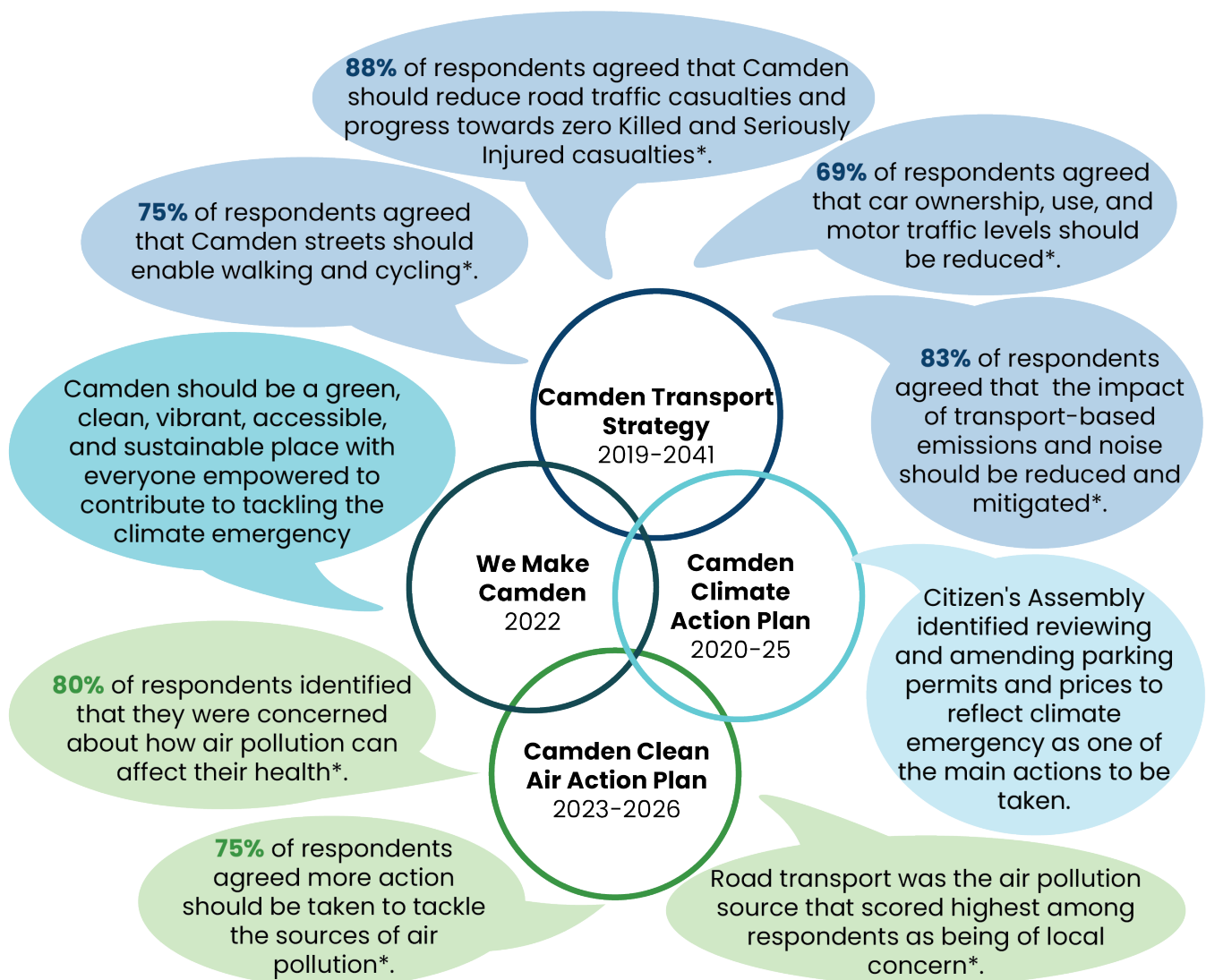
Your feedback will help us to make a decision on the proposals below.

What you have told us so far

To support our commitment to tackling climate change, poor air quality, road danger and low levels of physical activity, we have adopted a set of ambitious policies and strategies to create safer and healthier streets as well as encouraging more sustainable travel options for anyone who is living in or visiting the borough.

A number of our policies include a commitment to review parking charges to achieve these goals.

These policies have been shaped by the priorities of our communities – they were all adopted following extensive engagement such as public consultations, workshops and citizen assemblies. As part of this engagement, key points were raised relating to changes to parking we are proposing.

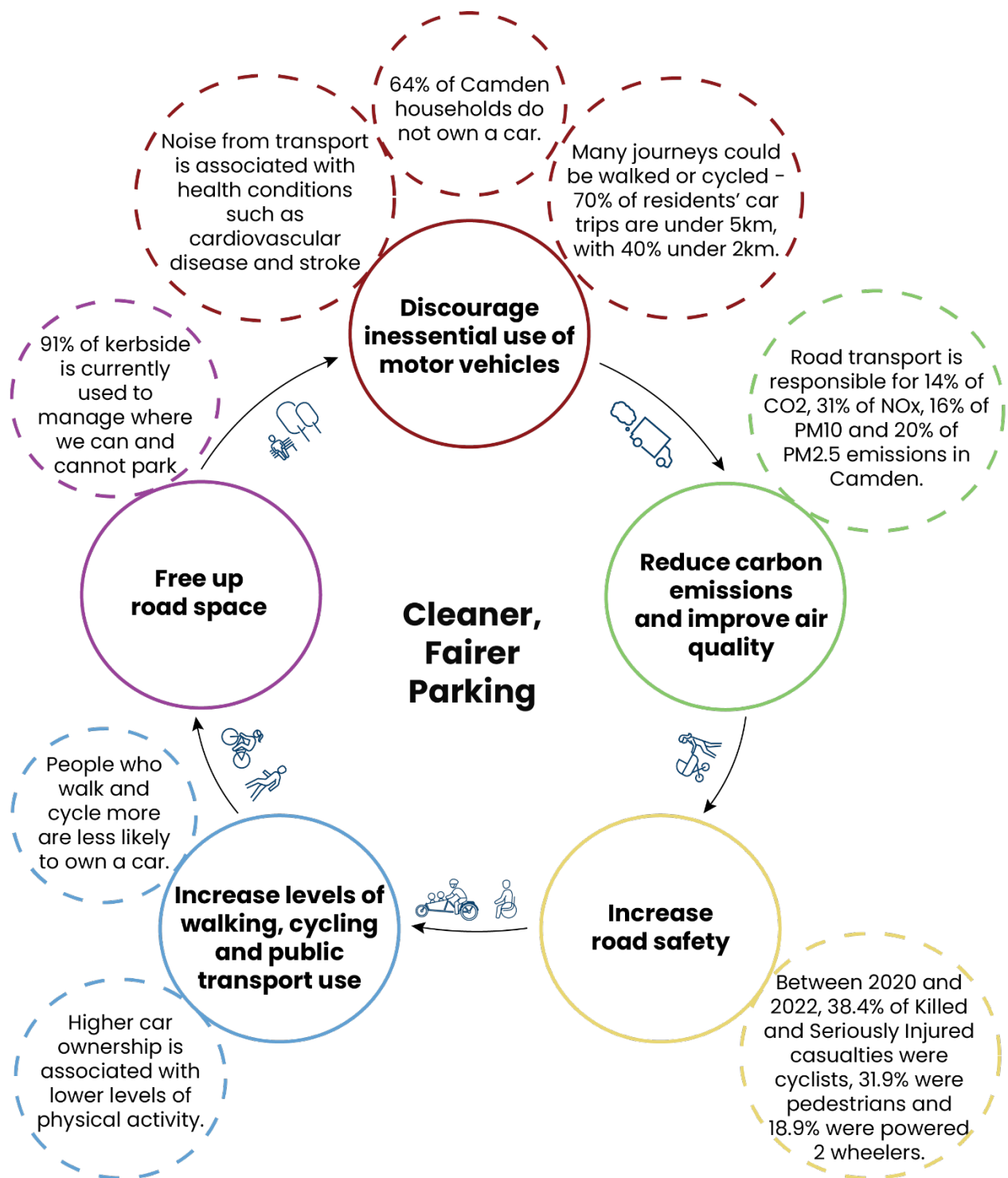


*Statistics from the consultation activities relating to the Camden Transport Strategy, Camden Clean Air Action Plan, Camden Climate Action Plan and We Make Camden.

A large version of the image is available in the 'Related Documents' section on the main consultation page.

Why we are proposing these changes

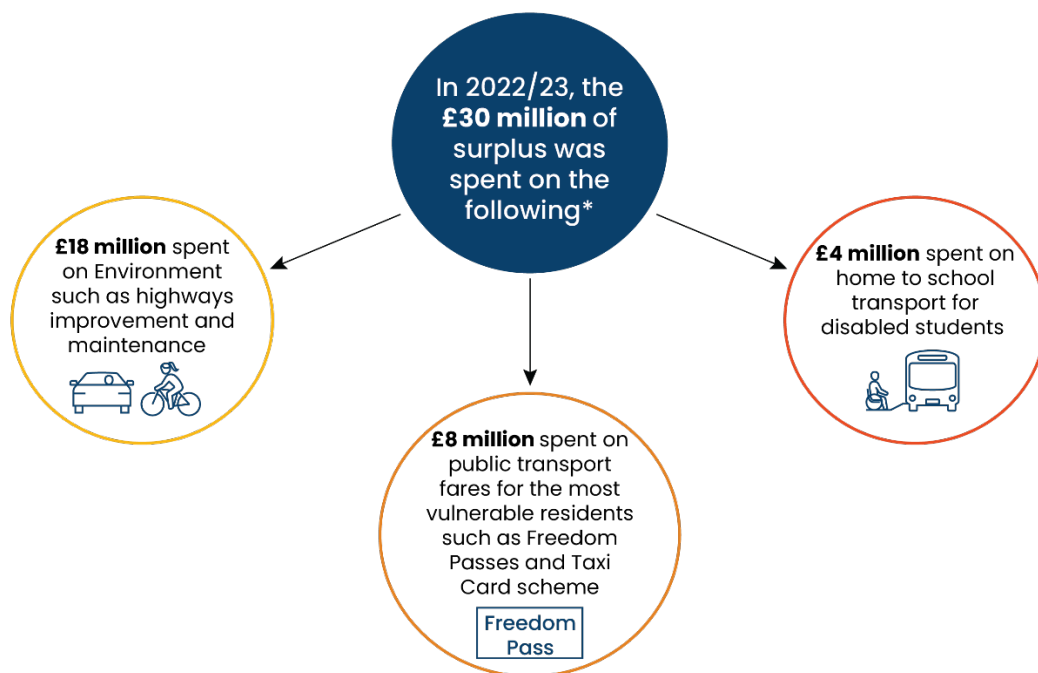
Our proposals for changes to parking fees, charges, terms and conditions aim to discourage inessential use and ownership of motor vehicles. Where people have an essential need we are also encouraging the use of low emission vehicles. If approved our proposals would help to reduce carbon emissions, improve road safety and air quality as well as increase levels of walking, cycling and public transport use. Measures to reduce car ownership would also help to free up road space for those who need to use a motor vehicle the most and to encourage walking and cycling, which is the most affordable way of getting around the borough particularly during the cost-of-living crisis.



A large version of the image is available in the 'Related Documents' section on the main consultation page.

What parking fees and charges are spent on

The council has committed to review the parking fees and charges regularly as a means of delivering environmental and transport objectives in local and nationally adopted policies (including the Climate Action Plan and Camden Transport Strategy) and not for any other purpose including the raising of revenue. The income received from parking fees and charges, including penalty charge notices (parking tickets) is used to cover the operational costs of the parking service. Any additional surplus is required by law to be reinvested into transport and the public highway for example highways improvement schemes, highways maintenance and public passenger transport. In the below diagram you can see how this was spent in the last year.



*Figures have been rounded to the nearest £1 million for simplicity. Please review the [Camden Annual Parking Report](#) for more details.

A large version of the image is available in the 'Related Documents' section on the main consultation page.

Encouraging sustainable travel and the support available to you

Recognising the current cost of living crisis, we have developed a comprehensive support package to mitigate the increase in proposed charges for at-risk and low-income citizens. There is also a wide range of support for anyone who wants to shift to cleaner vehicles or more sustainable transport options.

There is a range of existing support including:

- Blue badge holders can park in resident permit bays free of charge (excluding resident permit bays in the green badge zone unless they live, work or study there)
- Discounted visitor permits for those residents that are disabled or over 75
- Camden permit-scrappage scheme which offers free car club membership for two years
- A range of support for those wishing to try cycling including [free cycle training and bike loans](#)
- The ULEZ scrappage scheme for high polluting vehicles which provides a grant for swapping a vehicle.

As part of these proposals we will investigate new support measures including:

- Options to pay monthly rather than annually
- Phased in charges for low-income residents (who currently receive Council Tax support) and small businesses and charities (those receiving small business rate relief and charitable relief on business rates will be eligible)
- Discounts on cycle hire and try before you bike programmes
- Expansion of discounted visitor permits for disabled and residents over 75.

For more information on this support package please view the Cost-of-Living support section of the frequently asked questions.

Webinars

We will run two Webinar sessions for anyone who would like to ask questions on the proposals. The events will take place on **11 October 2023 (6pm-7pm)** and on **30 October 2023 (6pm-7pm)**.

Please refer to the main consultation website for the links to both webinar sessions.

A paper copy and other formats of the documents and the consultation survey including an easy read/large print version or a copy in a different language can be provided upon request, please call us on 020 7974 4444 or email CleanerFairerParking@camden.gov.uk.