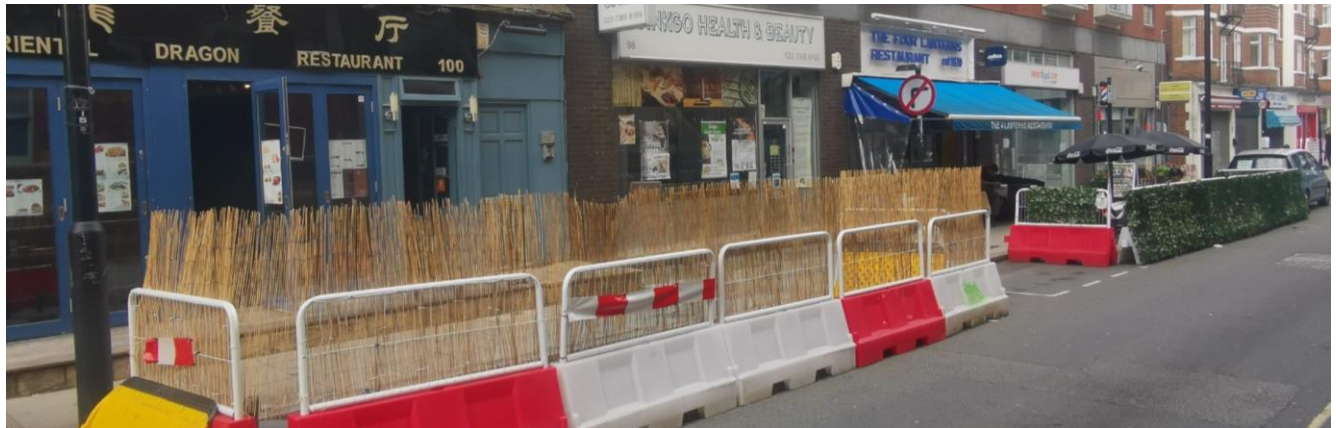




# Safe and Healthy Streets consultation

## Cleveland Street Streatory



### What's the challenge on Cleveland Street?

The Covid-19 pandemic has changed how people in Camden live, travel and work. We want our streets to have more safe space for everyone to walk and cycle, for children to get to and from school safely and healthily, for businesses to be able to flourish, to reduce carbon emissions from vehicles and for you to be breathing cleaner air.

We want to ensure that our streets support a strong recovery from the pandemic and provide a lasting legacy of greener, safer, healthier travel. Whether it's an essential journey like taking your children to school, getting to work or just popping out to enjoy your local park we want you to love where you live, and to love Camden.

In order to support the hospitality businesses, Camden has developed a 'Streateries' programme to help businesses re-start trade quickly and safely whilst social distancing measures remain in place. Streatory schemes include measures like timed road closures and/or new pavement space where restaurants, cafes, pubs and other similar businesses can put tables and chairs for outdoor dining while keeping space for pedestrians to pass safely, subject to licenses being granted. Streateries can also attract more people to the area, who may also shop in other types of businesses, helping to boost the local economy.

Cleveland Street, in Fitzrovia, has numerous cafes and restaurants as well as offices, and residential buildings. The stretch of Cleveland Street between Maple Street and Warren Street has about 13 hospitality businesses.

Temporary Streateries were implemented on Cleveland Street in 2020. Parking was suspended, and water-filled barriers were placed in the carriageway to provide additional space for outdoor dining.

To help the hospitality sector's recovery, we are reviewing the Streateries on Cleveland Street and will consider upgrading the current facilities with the same infrastructure seen at our other sites in Camden.



*Streatory in Charlotte Street, Camden*

## What is being proposed?

We propose to continue the trial for Streateries on Cleveland Street, through the use of an Experimental Traffic Order (ETO), for a maximum period of up to 18 months, which will involve the following:

- Outside Nos.124 and 126: Keeping 20.2 metres of outdoor dining space in an area that previously was 10 metres of paid for parking bays and 10 metres of residents' parking bays
- Outside No. 100: Keeping 7 metres of outdoor dining space in an area that was previously 7 metres of single yellow line.
- Outside Nos. 94 and 96: Keeping 10 metres of outdoor dining space in an area that was previously 10 metres of resident parking bay.
- Outside nos. 80 - 84: Keeping 17.5 metres of space for outdoor dining in an area that was previously 6.1 metres of resident parking bay and 5.2 metres of pay by phone bay and 6.2 metres of single yellow line
- Outside nos. 74 - 78: Keeping 11 metres of loading bay in an area that was previously single yellow line.
- Outside nos. 68 - 72: Keeping 16 metres of outdoor dining space in an area that was previously 10 metres of residents' parking bays and 6 metres of single yellow line

## How would these changes be made?

After the consultation, we will carefully consider the responses, alongside other information, to help us in deciding on whether or not to progress the scheme. Should a decision be made to proceed, we would keep the Streatery on a "trial" basis, for a maximum 18-month period, under an Experimental Traffic Order (ETO). This will allow us to continue to test the changes we've previously made under temporary orders, so that we can continue to monitor how they work. If this trial is approved, a further public consultation will be held after around 12 months of the ETO period to assess stakeholder feedback at that point and feed into the final decision, alongside other data and information, on whether or not to make the Streatery in this location permanent.