



Somers Town Green Mobility Hubs – Phase 3: Brill Place and Werrington Street



What's the challenge in this area?

We want our streets to be **safe spaces** for you to **walk and cycle** for every day trips, for **businesses to be able to flourish**, to **reduce carbon emissions from road transport** and for you to be **breathing cleaner air**. We want to ensure that when we invest in our streets it provides a lasting legacy of **greener, safer, healthier travel**, helping us deliver our wider Transport Strategy objectives.

73% of households in the Somers Town and St Pancras Ward do not own a car and rely on walking, cycling and public transport to make their journeys. Providing infrastructure and improvements that enable more people to safely and easily use sustainable, low-cost, low-emission and active modes of transport (such as walking, wheeling, cycling and scooting) is more important than ever.

Somers Town has received funding from the Mayor of London to become a more sustainable neighbourhood, through the [Somers Town Future Neighbourhoods 2030](#) Fund. This involves different projects that contribute to making Somers Town a more climate resilient and healthy place to live. One of these projects includes the introduction of a network of Green Mobility Hubs within Somers Town being brought forward in three phases. We are now consulting on the third phase of introducing these hubs and more detail on these proposals is set out within this information sheet.

What is a Mobility Hub?

A mobility hub is a recognisable place/point that offers **a mix of sustainable and active shared mobility modes, which can include shared bikes, car clubs, cargo bikes and e-scooters**. Mobility Hubs can also include other community features such as cycle parking, seating and planting or play areas, water fountains and other amenities designed to improve public space for residents and visitors.

Mobility Hubs provide a sustainable, accessible 24-hour alternative service to private car ownership. The image below (Figure 1) shows an example of what a mobility hub could look like.

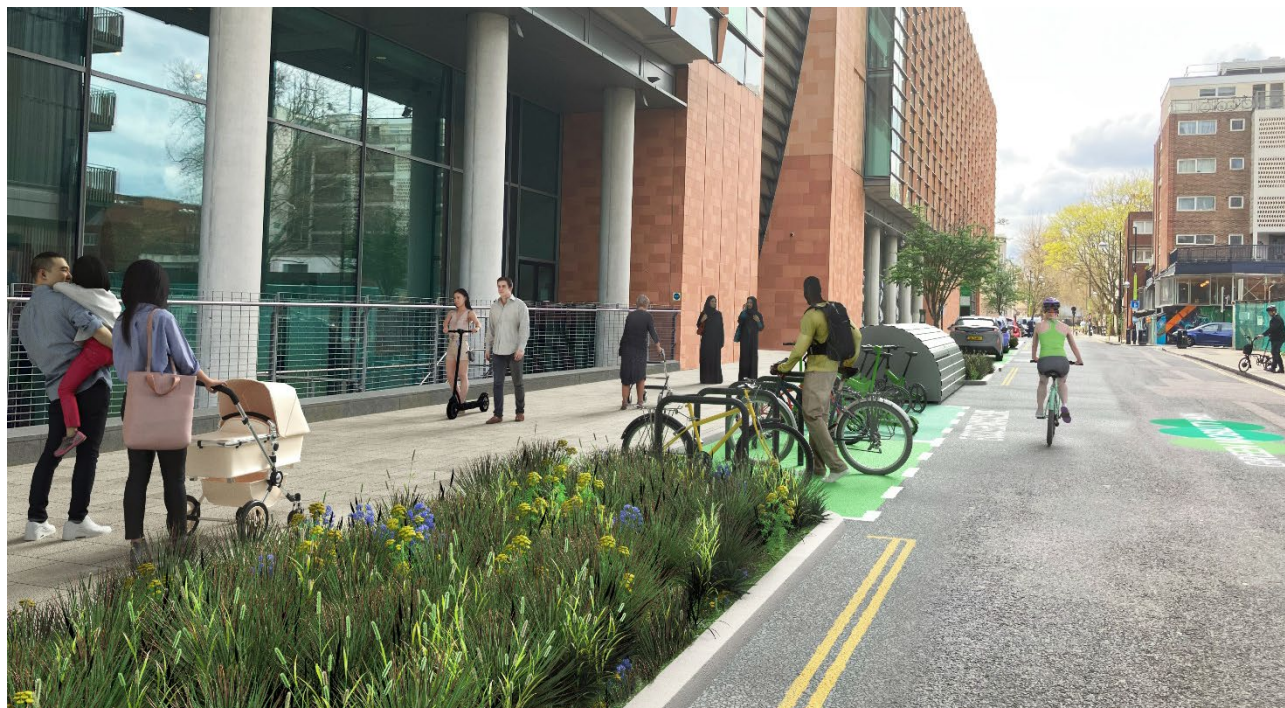


Figure 1: Example of a Mobility Hub

We are creating some of Camden's (and the UK's) first Green Mobility Hubs within Somers Town, combining a mix of shared, environmentally sustainable mobility options at each location.

In Somers Town there are currently 4 car club bays, multiple Santander hire bike docking points and 6 dockless e-scooter and cycle hire bays already installed. This project will significantly enhance that offer. At the same time, the Hubs aim to improve the way existing streets in Somers Town look, for example by providing more planting, trees and seating.

What are we proposing in Somers Town?

In August 2022, we engaged with Somers Town residents and other stakeholders about the locations where Green Mobility Hubs could be proposed via the [Somers Town Future Neighbourhoods Commonplace page](#), asking residents and other stakeholders to provide their views on nine possible locations. We sent a postcard to all addresses in Somers Town to let residents know about this engagement.

We are now proposing to introduce seven Green Mobility Hubs across Somers Town, in 3 phases in the following locations:

Phase	Location	Current status
Phase 1 (consultation completed on 17 th October 2023)	Goldington Crescent	Decision taken to implement these sites in March 2024. See decision details.
	Cranleigh Street	
	Charrington Street	
Phase 2 (consultation completed on 21 st January 2024)	Doric Way	
	Chalton Street	

Phase	Location	Current status
Phase 3 (this consultation)	Werrington Street	Proposed for consultation
	Brill Place	

These sites have been identified via a wide range of factors including:

- feedback from residents and other stakeholders in the August 2022 engagement,
- permit parking ratios (a comparison of the number of parking spaces and the number of active parking permits),
- space considerations,
- anti-social behaviour data for the streets where the mobility hubs are proposed,
- existing car club locations across Somers Town,
- usage of existing dockless bike and e-scooter bay locations.

The map below (Figure 2) shows greening and transport projects currently proposed and being delivered in Somers Town. The yellow dots on the map show the seven sites within Somers Town that we have identified as potential locations for a Green Mobility Hub.

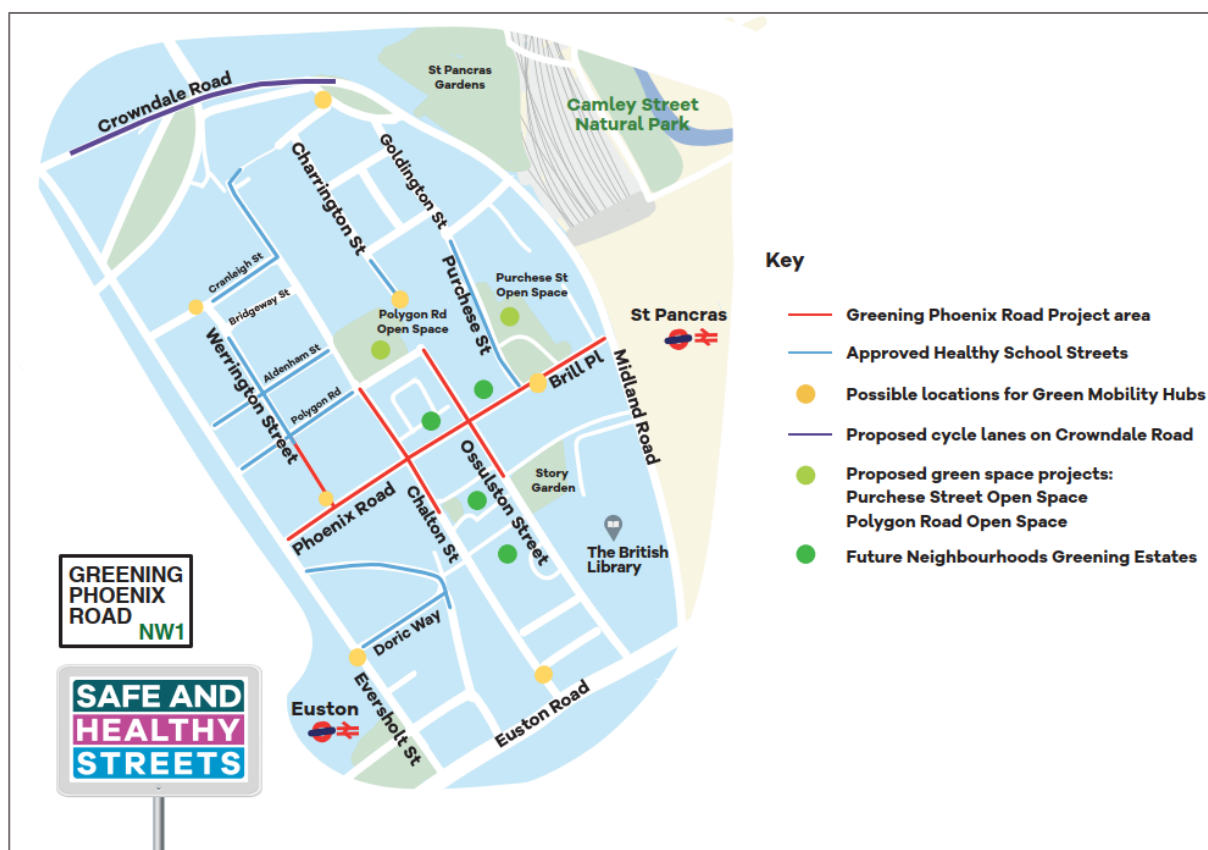


Figure 2: Map of greening and transport project across Somers Town

We are proposing to deliver the Mobility Hubs by converting space, previously used only for private parking or vehicle access, to green spaces and additional facilities that can benefit pedestrians, cyclists and business owners. We are now consulting on Phase 3 of our proposals to introduce new Green Mobility Hubs onto Brill Place and Werrington Street, as shown on the map in Figure 3.

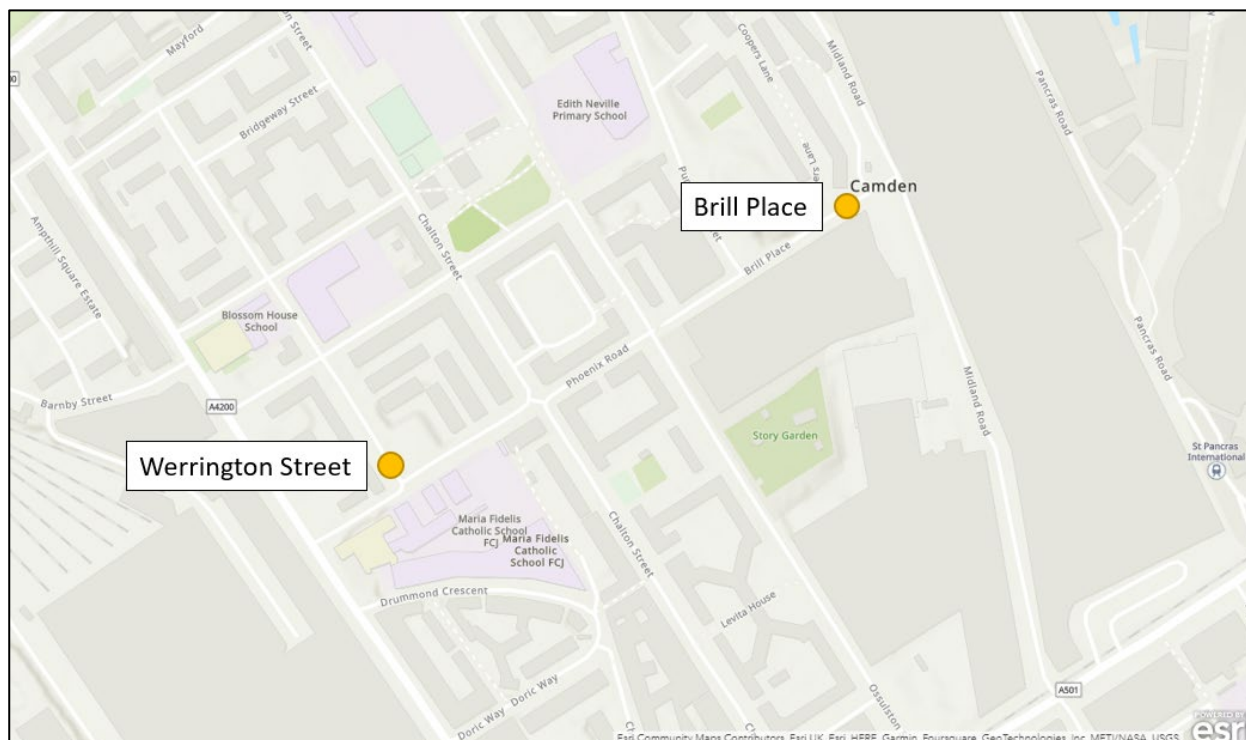


Figure 3: Locations of the mobility hubs being consulted on in Phase 3

Proposals Being Consulted On (Phase 3)

At each Green Mobility Hub location, we are proposing some parking changes to incorporate the new hub elements. The parking bay changes in this consultation are summarised in the table below.

Table 1: Summary of proposed parking changes

Location	Removal	Addition	Relocation	Other
Brill Place	<ul style="list-style-type: none"> Disabled bay: 1 Resident bay: 8 (47m) 	<ul style="list-style-type: none"> EV car club bay: 2 		N/A
Werrington Street	<ul style="list-style-type: none"> Pay by Phone bays: 7 Resident permit bays: 13 	<ul style="list-style-type: none"> EV car club bay: 1 EV charging bay: 1 	<ul style="list-style-type: none"> Car club bays: 2 (north from their current location) 	N/A

Werrington Street

This Green Mobility Hub would provide all residents and visitors to the area with access to a variety of transport modes, including the facilities listed below. The Hub will also signpost to public transport facilities in the vicinity including the nearby Euston railway, underground and bus stations and the bus stops on Eversholt Street (Stop T, Stop S and Stop A). The scheme would also improve the look and feel of the area and help make Werrington Street cleaner and greener for local residents and businesses.

The Hub proposal takes into account the existing proposals for changes on Phoenix Road and surrounding area as part of the [Phoenix Road greening scheme](#).

The proposed location is by the junction with Phoenix Road, and within 100 metres of Eversholt Street. The Hub is proposed to include:

- A new e-scooter and cycle hire bay, providing easy access to these services and reducing street cluttering by providing a dedicated area;
- New cycle parking stands to improve cycling provision for residents and visitors. This would include stands designed to facilitate parking of larger cycles such as adapted or cargo bikes;
- Retain the two existing car club bays (the bays will be relocated north from their current location) to provide another transport option for residents who do not own a vehicle;
- A new electric car club vehicle and bay to provide another transport option for residents who do not own a vehicle;
- A new electric vehicle charging bay, to provide charging for residents or visitors with electric vehicles;
- Two new bike hangars, providing secure cycle parking for residents;
- New Mobility Hub plinths, and wayfinding information, to identify the Hub and help people use the services and navigate the local area on foot and by bike;
- New planting, rain garden features, seating and paved area to enhance the area;
- Improved road surface on the Werrington Street and Phoenix Road junction to enhance pedestrian priority at this junction;
- Drinking water fountain and cycle maintenance stand – *subject to further investigation as part of the detailed design*

**Somers
Town
Green
Mobility
Hub Plinth
example**



The proposed site is visualised in the image below, and a drawing attached at the bottom of the consultation page which shows the proposed changes on Werrington Street. For all hubs, the exact layout and content of the new planting, including seating provision, will be developed as part of the detailed design stage.

Figure 5: How the Hub on Werrington Street might look



Brill Place

This mobility hub is to be located at the eastern end of Brill Place, just west of the junction with Midland Road. The Hub will be located near to existing Somers Town housing as well as the new Grand Central apartments and the Crick Institute. The proposed site is close to an existing and very popular e-scooter and cycle hire bay which the Hub would aim to integrate with. Located next to St Pancras International rail station, King's Cross/ St Pancras Underground station and bus stops on Midland Road and Pancras Road, the hub would provide improved connections and facilities for both local residents and businesses, and visitors making onward journeys to and from the rail station. The Hub at this location is proposed to include:

- New cycle parking stands, including accessible stands designed for adapted cycles and cargo bikes to improve cycling provision for residents and visitors including disabled cyclists;
- A new e-scooter and cycle hire bay, providing easy access to these services and reducing street cluttering by providing a dedicated area;
- Two new bike hangars, providing secure cycle parking for residents
- New Mobility Hub plinths, and wayfinding information, to identify the Hub and help people use the services and navigate the local area on foot and by bike
- Two new electric car club vehicles and bays to provide another transport option for residents who do not own a vehicle;
- New planting, and rain garden features, including new seating, to enhance the area
- Drinking water fountain and cycle maintenance stand – *subject to further investigation as part of the detailed design*

The proposed site is visualised in Figure 4, and a drawing is attached at the bottom of the consultation page which shows the proposed changes on Brill Place.

Figure 4: How the Hub on Brill Place might look



How have we engaged on these plans already?

Previous engagement around the possible locations of Green Mobility Hubs in Somers Town was undertaken in August/September 2022. The following provides a summary of the features which participants would like to see at the three hubs we are currently consulting on (features with the highest number of responses).

Phase 3 Green Mobility Hub	Response received	Our response
Werrington Street	The features with the highest number of responses were: cargo bikes for hire, secure cycle hangars and general cycle parking for visitors.	We have incorporated these features into the proposed Werrington Street hub design.
	Anti-social behaviour concerns.	Camden will consider methods for increasing safety in the design of the site. This could include lighting, good sight lines, safe pedestrian pavements. ASB data would continue to be monitored.
	Concerns around pedestrians having priority on pavements and conflict issues with scooter and cyclists.	The hub would be in place of parking bays and not on the pavement. Camden would consider pavement extensions in the design. The hubs would include features to improve the area for pedestrians, for example wayfinding, seating, and greening.
Brill Place	The features with the highest number of responses were:	Seating, planting and a drinking fountain are included in the design.

Phase 3 Green Mobility Hub	Response received	Our response
	seating and planting and drinking fountain, green roof shelter, Santander cycles, Wi-Fi and delivery lockers.	<p>Santander cycles, Wi-Fi and delivery lockers are not in the preliminary design. TfL is not currently planning to install new Santander cycles docks in Somers Town. Investigations into WiFi and parcel lockers have meant these features are unlikely at this time.</p> <p>These are elements that could be included at Hub sites at a later date, if there was sustained interest and demand for such facilities and funding.</p>
	Anti-social behaviour concerns.	Camden would consider methods for increasing safety in the design of the site. This could include lighting, good sight lines, safe pedestrian pavements. ASB data will continue to be monitored.

Ensuring the views and needs of disabled people are taken into account

From prior feedback received from Somers Town residents, we know that facilities for disabled people at Green Mobility Hubs is important to the Somers Town community. We continue to investigate options including provision of accessible cycle parking, and ensuring new infrastructure such as electric vehicle charging stations meets accessibility guidance. However, it has proved difficult to deliver other ideas previously discussed including public mobility aid charging and shared adapted mobility scooters and cycles at this time. We will continue to explore these options moving forward.

If you would like to tell us about specific features you would like to see at the Hubs, you can do so in the consultation questionnaire. We welcome your thoughts on preferred locations and features and would take this into consideration during the final design process.

What happens next?

The consultation closes on **4 August 2024**. After the consultation, we will carefully consider the responses, alongside other information including relevant data, safety audits and policy contexts.

After the consultation, we would review whether any adjustments to the designs are needed and, if a decision is taken to approve the scheme, the final designs would be published as part of the decision report. Once a decision is taken, the decision report will be published online via our website. Local residents and stakeholders will be notified of the outcome. The report will consider a broad range of information including officer observations, consultation responses, feedback received, relevant policies, and other data/information. Should a decision be made to proceed, we would implement the changes under a permanent Traffic Management Order (TMO). If approved for construction, we would then carefully monitor the changes to make sure it operates effectively.