

Rev	By	Date	Amendments



Sub Sta

76
(a to h)

2no. PLANTERS TO BE INSTALLED TO
BLOCK ENTRANCE TO SLIP ROAD

GUARD RAILING TO BE REMOVED

4no. BOLLARDS TO BE INSTALLED
TO PREVENT VEHICLE ACCESS ON
FOOTWAY

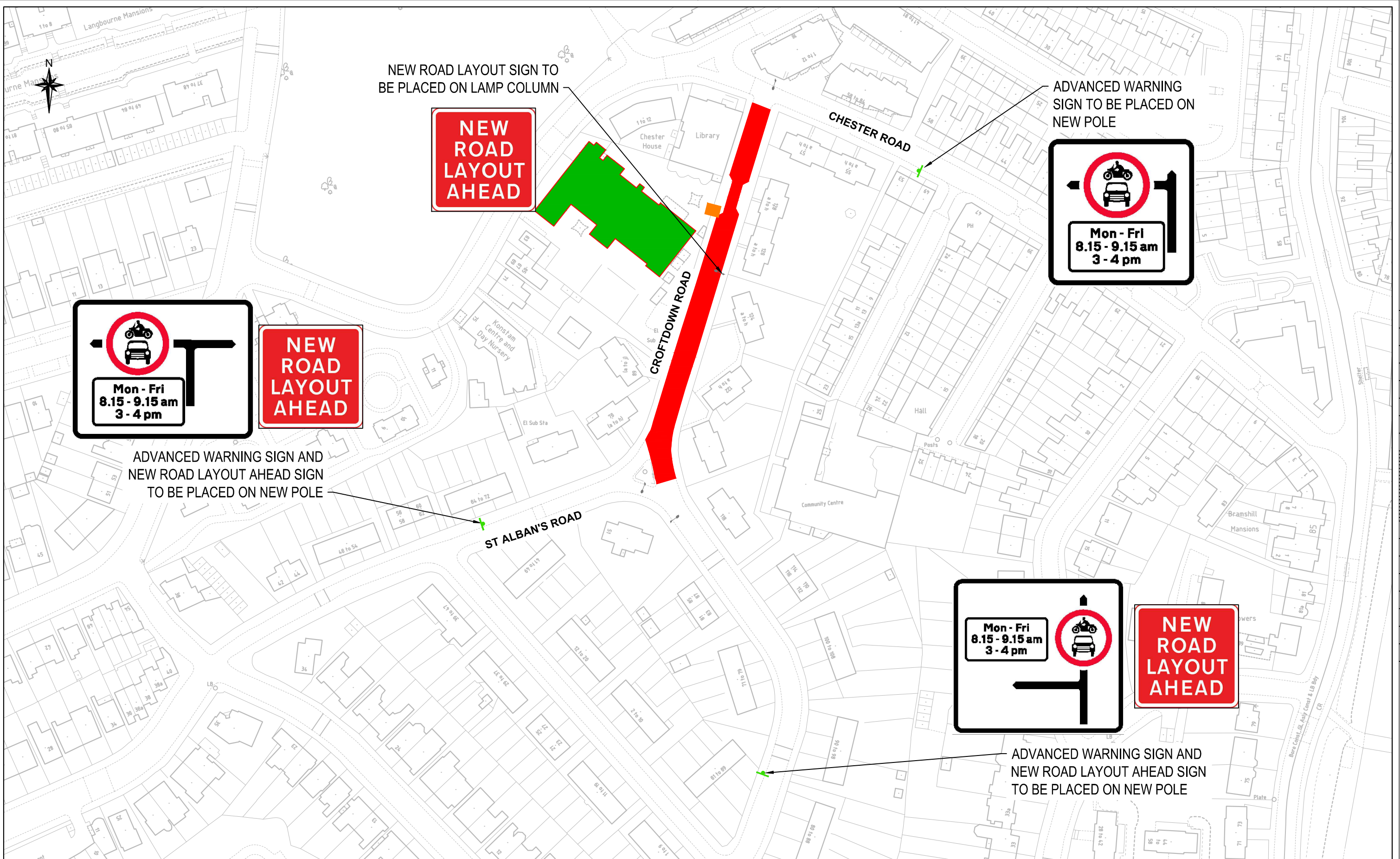
2no. PLANTERS TO BE INSTALLED
TO BLOCK ENTRANCE TO SLIP ROAD

DOUBLE BLIPS TO BE INTRODUCED
TO PREVENT BLOCKING AT
JUNCTION. DOUBLE YELLOW LINES
TO REMAIN AS EXISTING

51

118

Rev	By	Date	Amendments



Key	
	Existing lighting column
	Existing Signage Pole
	Existing Pupil Entrance
	Proposed Signage Pole
	Proposed Signage
	Proposed Timed Road Closure Area

Rev	By	Date	Amendments

Scale NTS @ A3	Date JAN 21
Drawn By DS	File Ref
Checked By YK	Dwg Name
Drawing Location	
Drawing Number	Rev. A