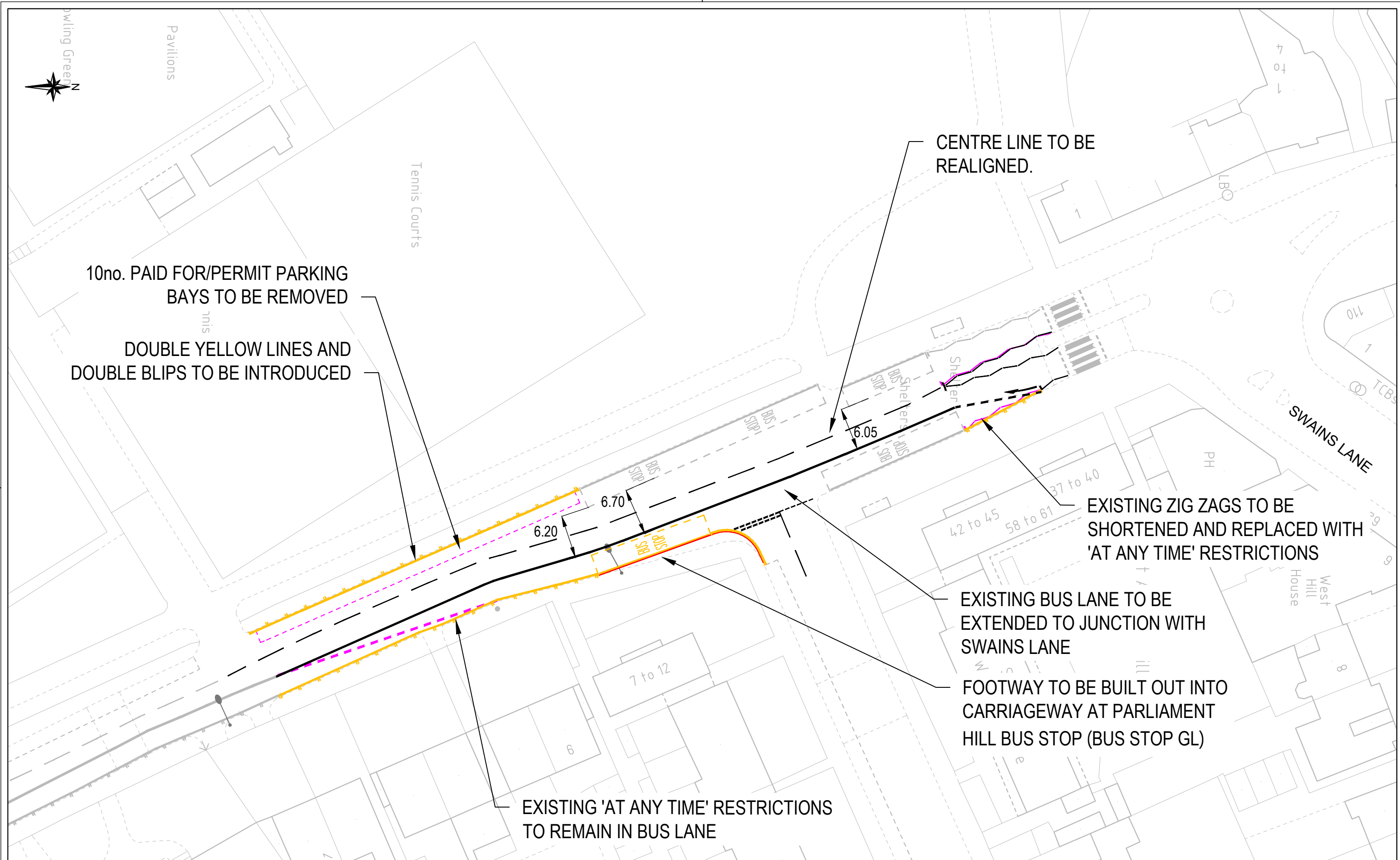
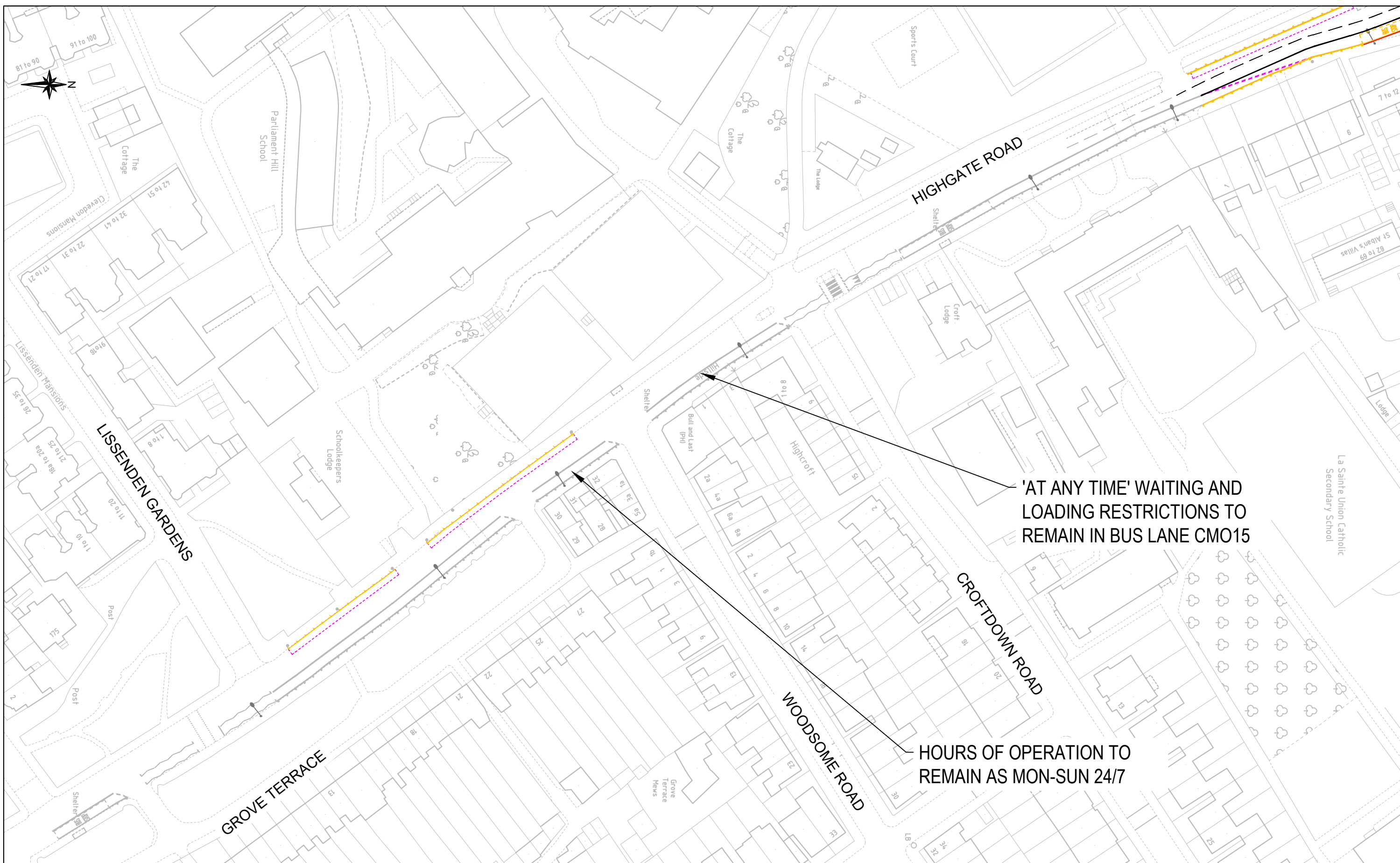


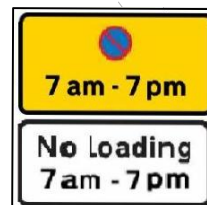
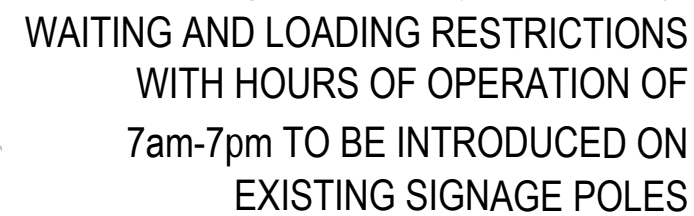
Rev	By	Date	Amendments

Scale DO NOT SCALE	Date AUG 21
Drawn By DS	File Ref
Checked By AC	Dwg Name
Drawing Location	
Drawing Number	Rev. A





Rev	By	Date	Amendments

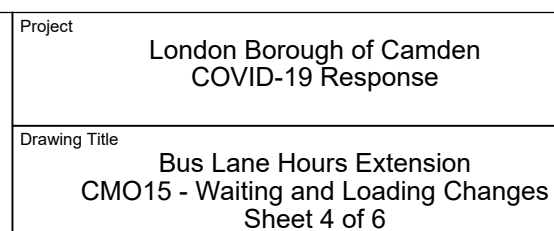





18no. RESIDENT/PAID FOR PARKING
BAYS TO BE REMOVED TO REMOVE
CARRIAGEWAY PINCH POINT

LISSENDEN GARDENS

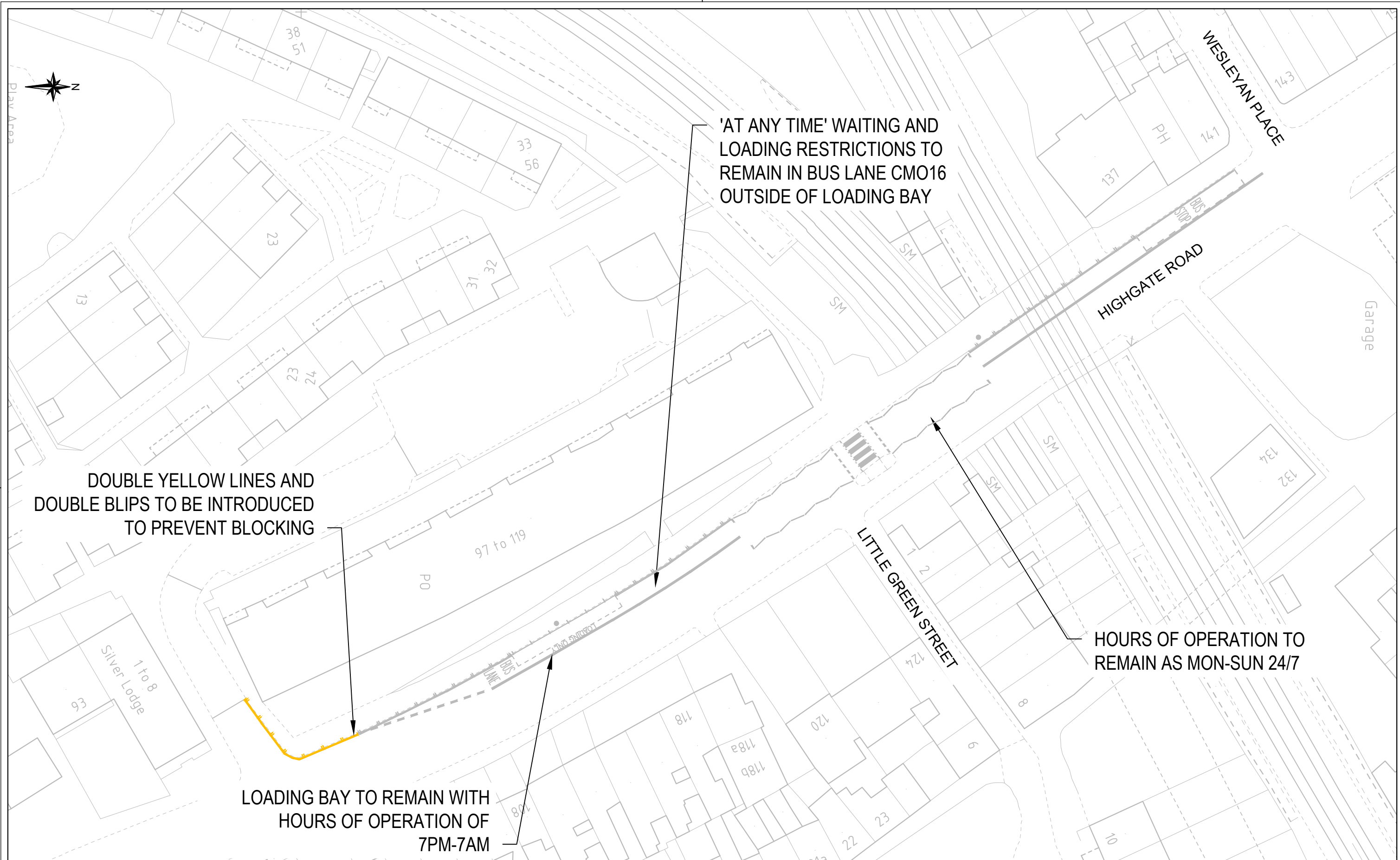
GROVE TERRACE

WOODSOME ROAD



Key	
	Existing road markings
	Existing road markings to be removed
	Proposed Waiting/Loading restrictions
	Existing Signage Pole

				Scale 1 : 1000 @ A3	Date AUG 21
				Drawn By DS	File Ref
				Checked By AC	Dwg Name
				Drawing Location	
				Drawing Number	
				Rev.	
Rev	Rv	Date	Amendments		





HOURS OF OPERATION TO REMAIN AS
MON-SUN 24/7

'AT ANY TIME' WAITING AND
LOADING RESTRICTIONS TO
REMAIN IN BUS LANE CMO17
OUTSIDE OF LOADING BAY

LOADING BAY TO REMAIN
WITH HOURS OF
OPERATION OF 7PM-7AM