





Making your neighbourhood safer and healthier

The Covid-19 pandemic has changed how communities in Camden live, travel and work. Many of us have been spending more time closer to home, making quieter and safer neighbourhoods more important than ever. We want our streets to have more space for everyone to walk and cycle, for you to be breathing cleaner air, for children to get to and from school safely and for businesses to be able to flourish. Whether it's an essential journey like taking your children to school, getting to work or just popping out to enjoy your local park we want you to love where you live, and to love Camden.

To help we are making changes on Highgate Road following a consultation by extending the hours of bus lane operation on Highgate Road to '24/7' to support use of sustainable transport.



Thank you for your comments



In October/November 2021 we ran a 4-week consultation on the changes we proposed for this area. Thank you to everyone who took the time to share their views.

We had over 100 responses and following the consultation we have made the decision to implement the proposed changes. You can read the decision report relating to this and our feedback to the consultation responses on our website.

Officers have also responded to consultation feedback and road safety concerns by making the following extra changes:

- Changing the line of the road where the current bus lane taper for CMO15 begins, south of the junction of St Albans Road. This will encourage drivers to make left turns into Highgate Road at slower speeds, and will help improve road safety.
- Introducing 'at any time' loading restrictions from the boundary of 149/151 Highgate Road up to the existing loading restrictions outside 153 Highgate Road before the junction with Gordon House Road. This will help cyclists access the Advanced Stop Line (ASL) at the traffic lights here, and to get ahead of queuing vehicles.
- Rearranging the dockless bike bay, paid-for parking bays and cycle parking south of Lady Somerset Road, including relocating the traffic islands to remove the existing vehicle pinch point.



What's the challenge on Highgate Road

There are three bus lanes on Highgate Road, which before the trial in September 2020 had relatively short hours of operation which limited their effectiveness in protecting space for buses and cyclists. At certain points along Highgate Road, the road has narrow pinch points which creates road safety risks for all road users.

We are making these changes as we want to support the 17 recommendations from Camden's Citizens Assembly on the climate crisis. This scheme also helps to deliver our own Transport Strategy priorities, which were strongly supported when we consulted on them, including increasing walking and cycling, improving public transport, improving air quality and making our streets and transport networks safe, accessible and inclusive for all. You can read more about our strategy on our website.

What's going to change?

Following the public consultation in October/November 2021 and decision to proceed with the changes listed above we are going to make the trial permanent and implement the extra changes in the coming months.

The trial, plus the new improvements, will help to increase safety to all road users and encourage more people to use local bus services and cycle in the area.

The full changes include:

- Extending bus lanes hours of operation to 24/7 to create more consistent provision for buses, and extension of CMO15 bus lane north to Swain's Lane
- Replacing 10 paid for/permit parking bays south of bus stop GH with no waiting and loading restrictions 'at any time'
- Extending the pavement at bus stop GL on Highgate Road
- Adding dashed bus lane road markings across the junction with St Albans Road
- Changing the road to smooth the kerb where CMO15 bus lane currently tapers immediately south of St Albans Road
- Replacing 18 paid for/permit parking bays on Highgate Road, opposite Grove Terrace with 'no waiting and loading' restrictions Mon-Sat 7am-7pm to remove the pinch points in the road
- Introducing 'at any time' loading restrictions from the boundary of 149/151 Highgate Road up to the existing no loading restriction outside 153 Highgate Road, before the junction with Gordon House Road
- Introducing 'at any time' waiting and loading restrictions at the junction of Highgate Road and Carrol Close
- Rearranging the dockless bike bay, paid-for parking bays and cycle parking south of Lady Somerset Road.

Work is scheduled to commence in mid-September at the earliest, and would take place between 9am and 5pm - some minor noise should be expected.

Our work since the pandemic to bring you safe and healthy streets

We won £13m funding from external sources and spent it on making streets safer and healthier.

1. Supporting you to cycle more

We've added 150 cycle hangars providing space for over 1000 bikes with 50 more planned for 2022.

We've tripled the length of cycle lanes in Camden. Camden now has 24km of safe segregated cycling with another 3km planned for 2022.

There are now over 200 new dockless bike and electric hire scooter bays providing dedicated parking spaces out of the way of pedestrians

35 streets are now better for cycling with cut-throughs and two-way cycling added to a total of over 100 streets. Making it easier than ever to get around by bike.

2. Making roads quieter and safer for everyone

We've worked to protect more than 100 residential streets in the Borough from traffic using them as cut-through routes.

There are now 24 new School Streets, limiting traffic at drop off and pick up times.

We've built 12 new pedestrian crossing points with 5 more planned for 2022.

We've created over 5,000m² of new or improved public realm for pedestrians. That's the same as 4 Olympic size swimming pools.

Tottenham Court Road now has 1km of new bus lanes and 2km of timed bus and cycle only routes helping improve bus journey times.

Collisions are most likely to take place at junctions. We've made it harder to park on corners so it's easier to see for drivers and pedestrians at 200 junctions as well as upgrading 25 major junctions with improvements.

3. Supporting local businesses

Since summer/autumn of 2020 we've made space for 20 new streeteeries, creating new places outside for eating and drinking.

4. Fighting climate change

We've planted 50 new trees in the last year, with more than 60 to be added this year. Around the borough we're swapping parking spaces for Parklets. On Tottenham Court Road watch out for the new pocket parks and visit Alfred Place a new park in place of a road.

5. Helping you stay healthy

We've been making changes to improve the air quality where people live, work and go to school including around:

- Neighbourhood of the future area where we added 5 Healthy School Streets near Fitzjohn's Avenue
- Queen's Crescent
- the Arlington Road area

There are now over 330 Electric Vehicle charging points now in the Borough, half of which we added last two years. We've 162 more planned for 2022.

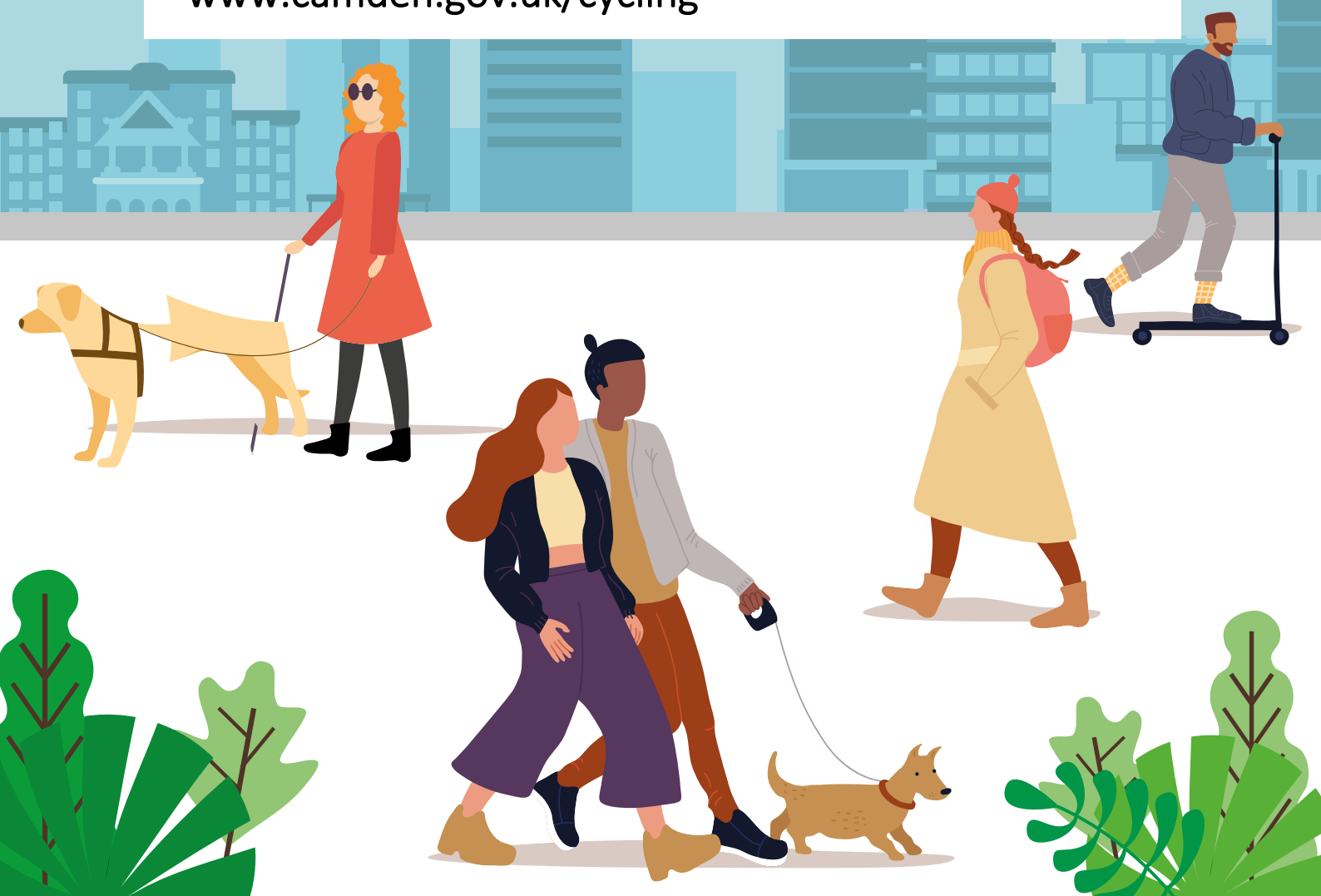
Find out more

To find out more on how we are making travel safer in Camden or to receive this letter in large print or another language contact us: www.camden.gov.uk/making-travel-safer-in-camden
safetravel@camden.gov.uk / 020 7974 4444

To give your suggestions and feedback visit:
safetravelcamden.commonplace.is

To learn to cycle for the first time, improve your cycling skills or for a bike loan to help you get on your way visit:

www.camden.gov.uk/cycling



Transport Strategy Service, London Borough of Camden, Town Hall,
Judd Street, London, WC1H 9JE