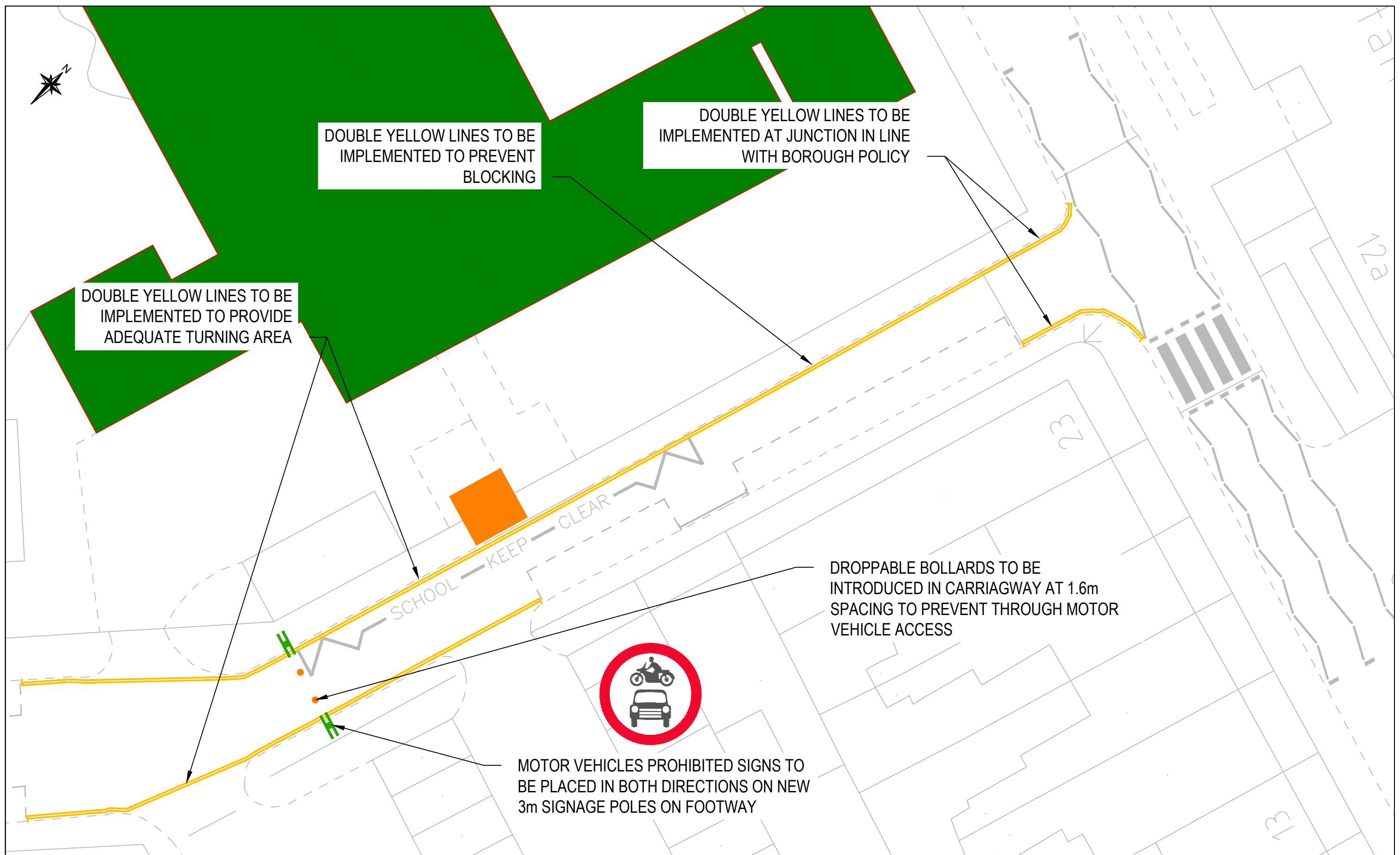
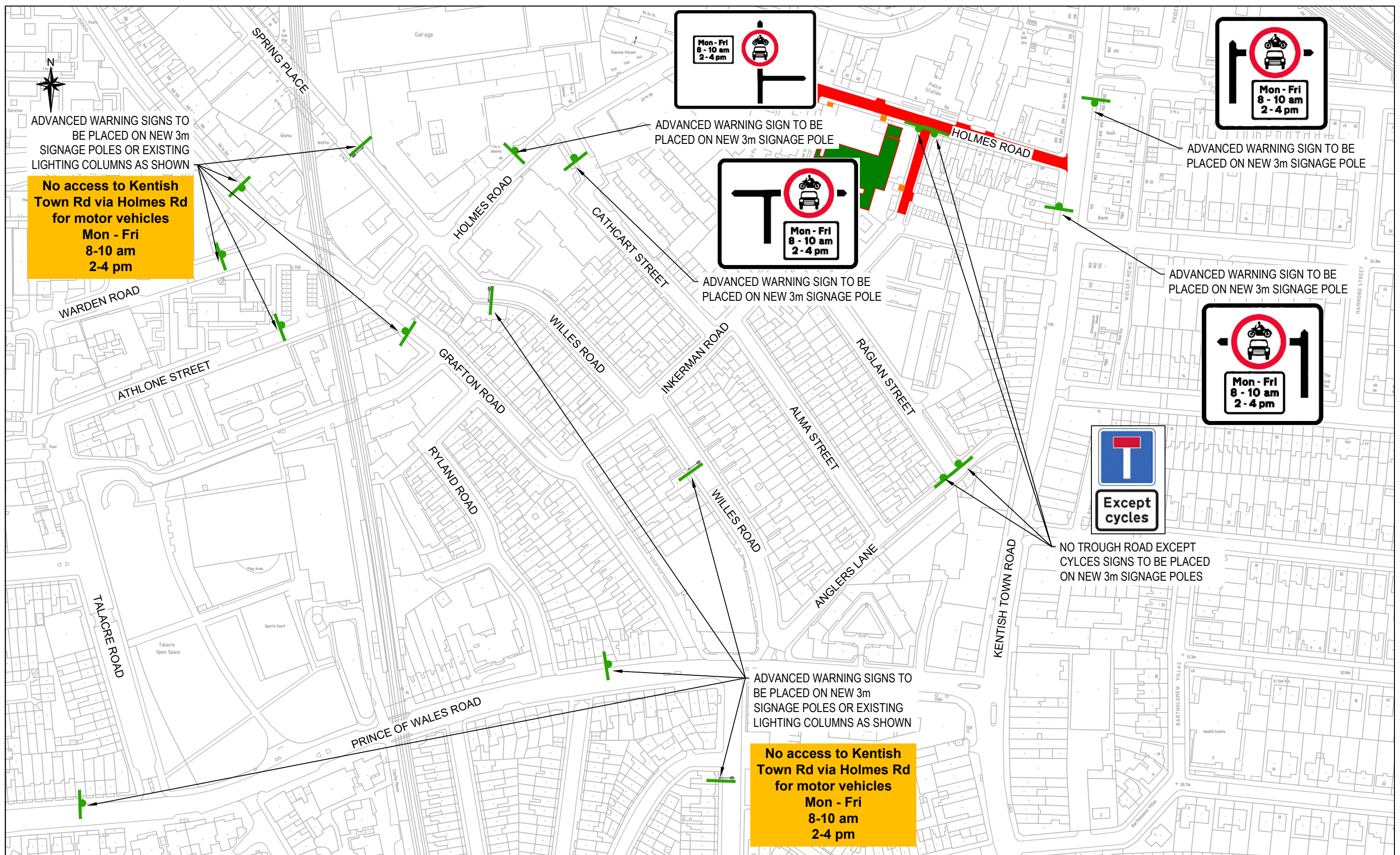


Rev	By	Date	Amendments



Rev	By	Date	Amendments



ADVANCED WARNING SIGNS TO BE PLACED ON NEW 3m SIGNAGE POLES OR EXISTING LIGHTING COLUMNS AS SHOWN

No access to Kentish Town Rd via Holmes Rd for motor vehicles
Mon - Fri
8-10 am
2-4 pm

ADVANCED WARNING SIGN TO BE PLACED ON NEW 3m SIGNAGE POLE

ADVANCED WARNING SIGN TO BE PLACED ON NEW 3m SIGNAGE POLE

ADVANCED WARNING SIGN TO BE PLACED ON NEW 3m SIGNAGE POLE

ADVANCED WARNING SIGN TO BE PLACED ON NEW 3m SIGNAGE POLE

NO TROUGH ROAD EXCEPT CYLCES SIGNS TO BE PLACED ON NEW 3m SIGNAGE POLES

ADVANCED WARNING SIGNS TO BE PLACED ON NEW 3m SIGNAGE POLES OR EXISTING LIGHTING COLUMNS AS SHOWN

No access to Kentish Town Rd via Holmes Rd for motor vehicles
Mon - Fri
8-10 am
2-4 pm

Rev	By	Date	Amendments