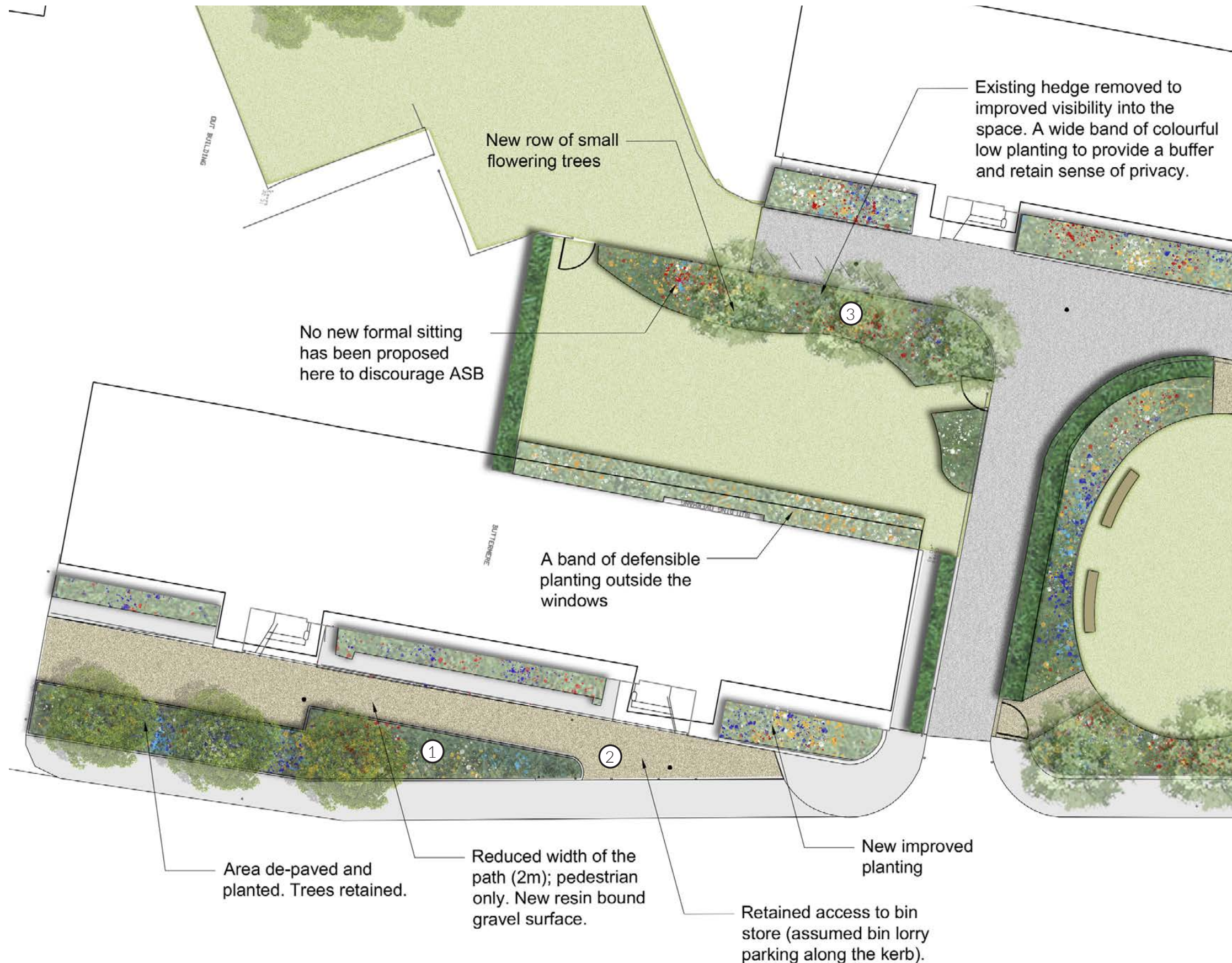


BUTTERMERE

CONCEPT PLAN



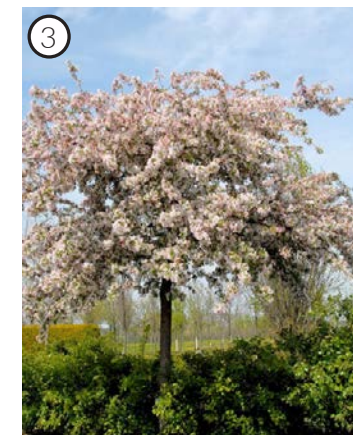
EXAMPLE IMAGES:



De-paving/ SuDS scheme



Improved surface at the front



Small flowering trees



Mixed planting

The design proposal for Buttermere includes narrowing the unused service road. An area of hard surface will be lifted and de-paved, and a small planting scheme has been proposed to upgrade the front of the building and the improve streetscape.

At the back it is proposed to remove the high evergreen hedges confining the spaces visually, and instead plant lower shrubs and herbaceous perennials along the edge of the lawn and in front of the windows.

Small flowering trees can be added along the path at the back.

KENDAL

CONCEPT PLAN



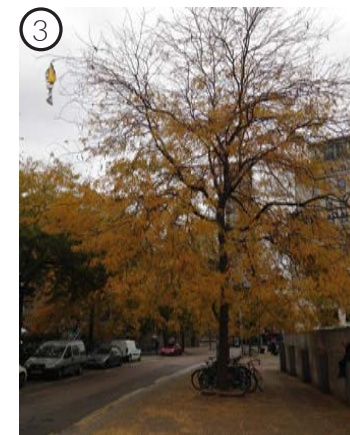
EXAMPLE IMAGES:



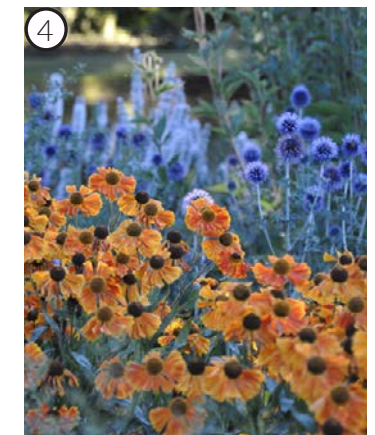
Re-shaped lawn with planting



Curved benches



Medium size street trees



Mixed planting

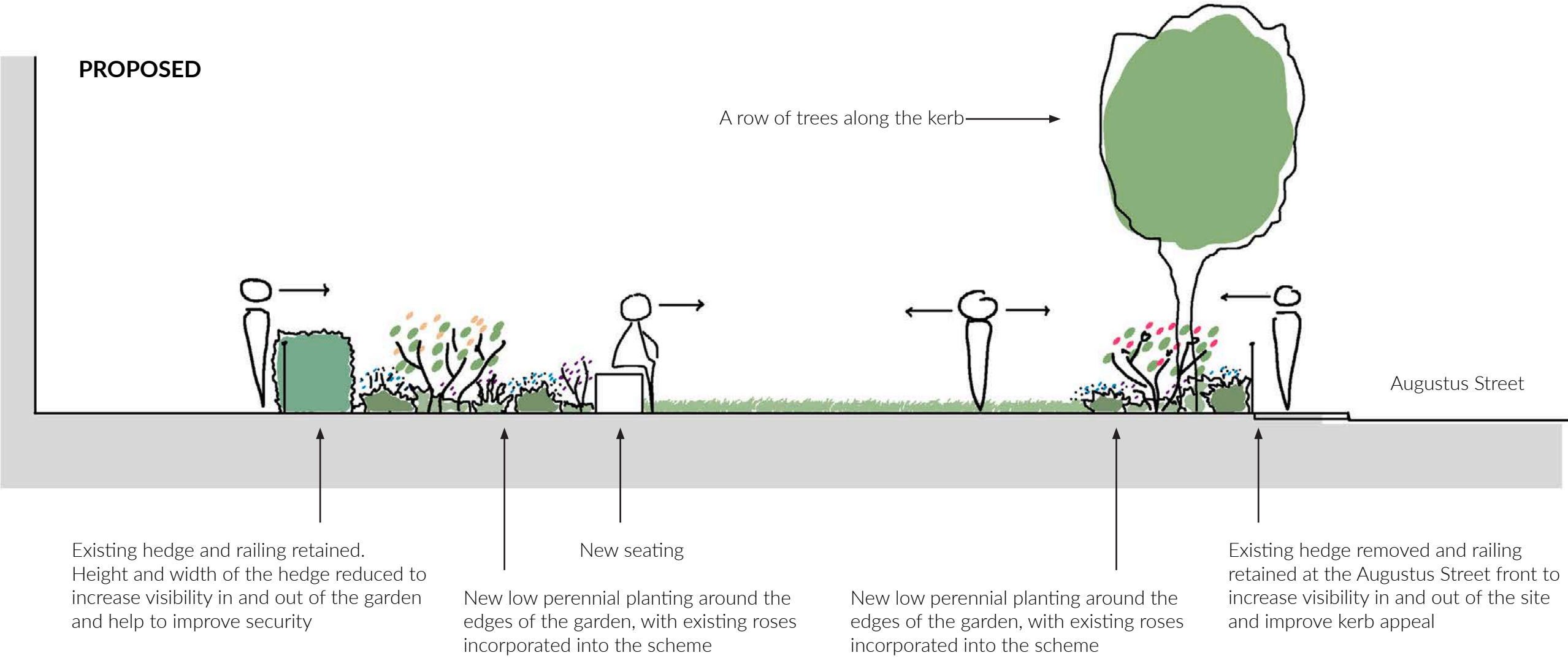
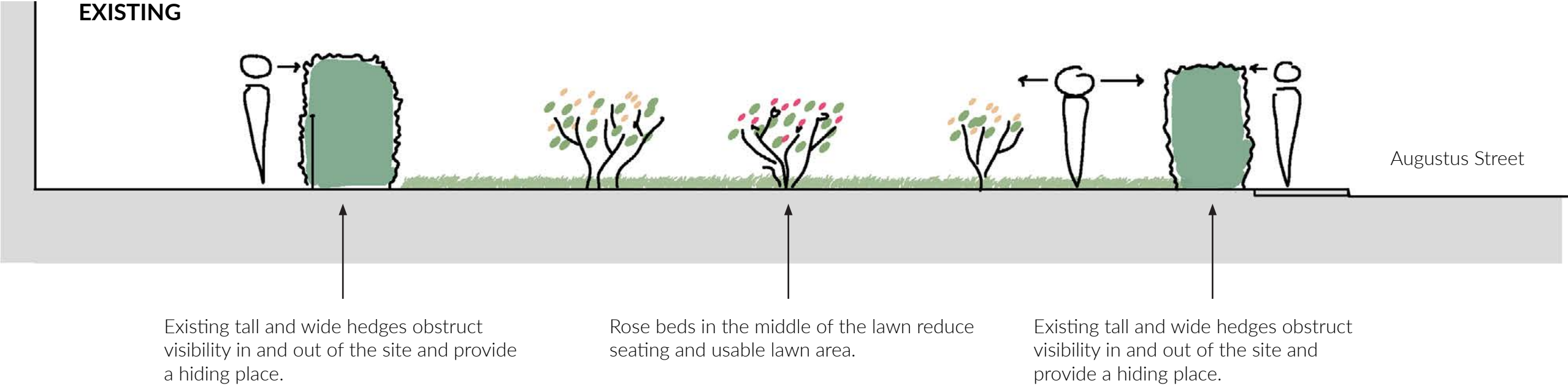
Kendal front garden. The garden is currently surrounded by tall evergreen hedges, with only one access point through a lockable gate. Roses and shrubs planted in the middle reduce the usable area of the lawn.

It is proposed to improve the connection (both visual and physical) between the garden and the surroundings, by reducing the height of the hedge (removed along the Augustus Street front) and creating more access points.

A line of medium size trees at the front will bring down the scale of the buildings, contribute to the sense wellbeing and upgrade the quality of the streetscape.

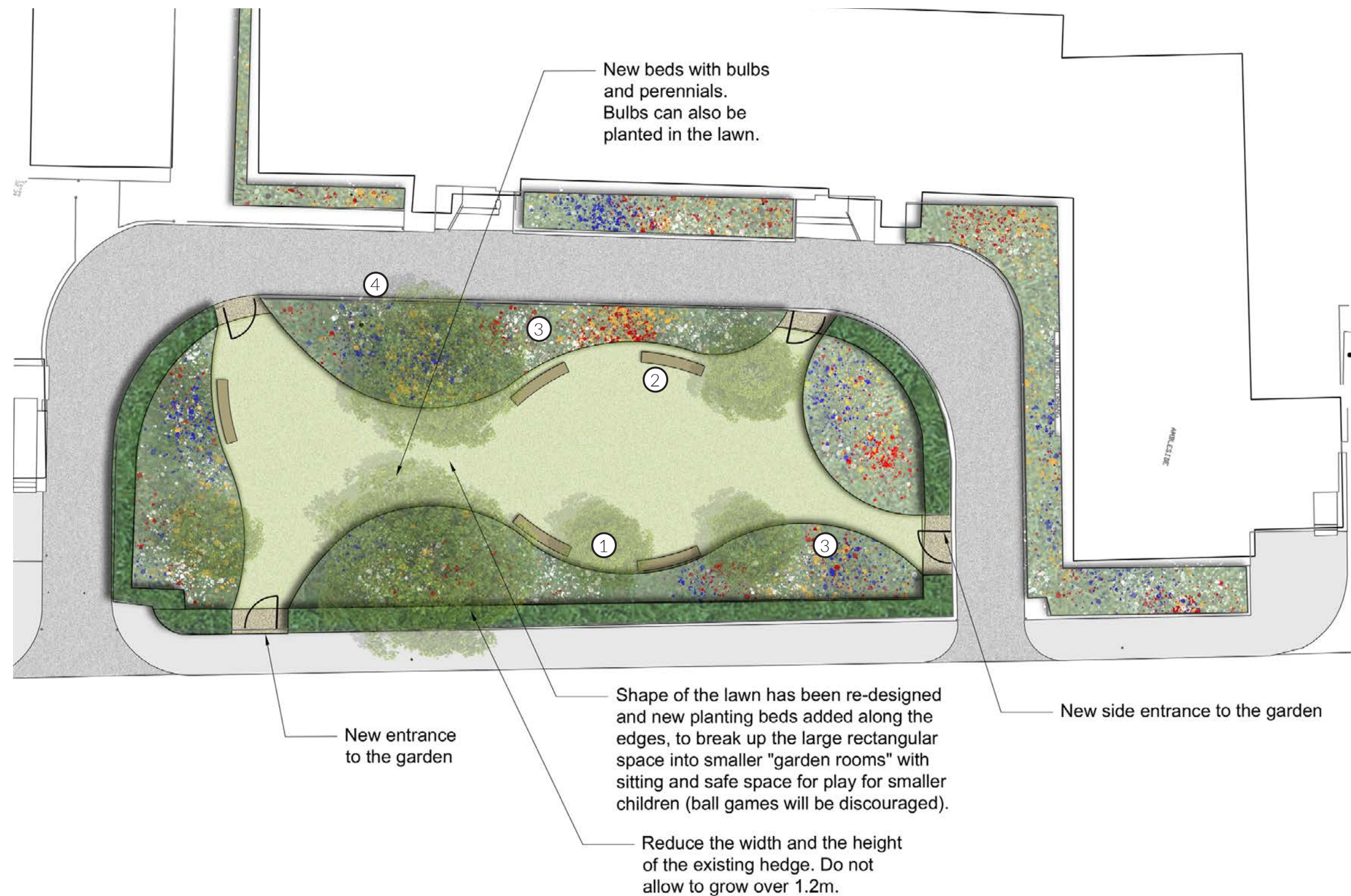
KENDAL

TYPICAL GARDEN SECTION AND VISIBILITY DIAGRAM



AMBLESIDE

CONCEPT PLAN



EXAMPLE IMAGES:



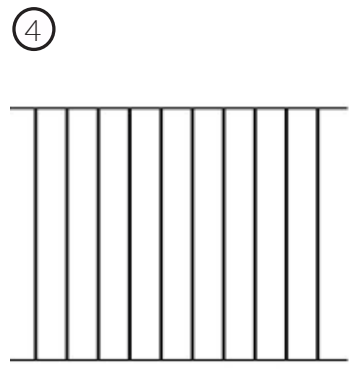
Spring bulbs in the lawn



Curved benches



Attractive planting



Flat top railing

Ambleside garden is currently a long rectangular space, surrounded by hedges on three sides, with some trees, including an attractive cherry tree. The long open space is lacking seating and encourages ball games.

It is proposed to re-shape the edge of the lawn, to create smaller spaces with seating surrounded by attractive planting. Spring bulbs will be planted within the lawn.

New entrances have been proposed to improve connectivity of the garden with the surroundings.