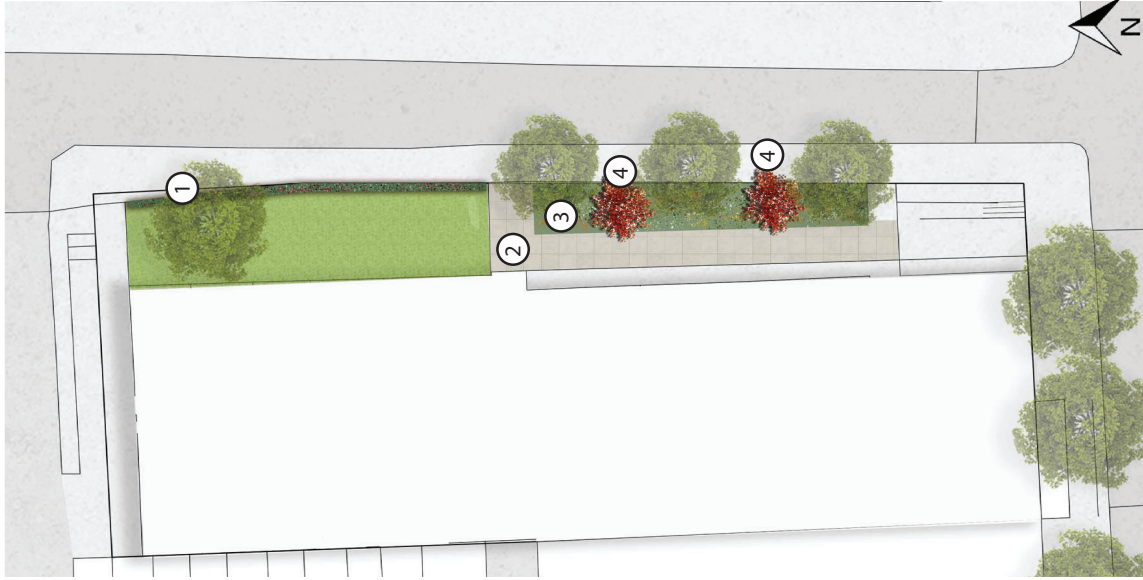
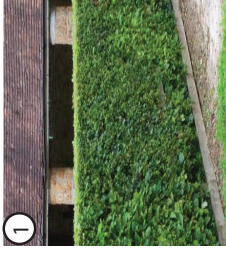


# 85-99 STANHOPE STREET

## CONCEPT PLAN



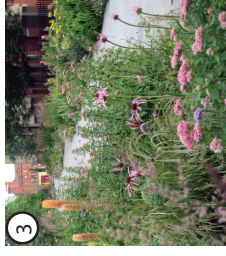
### EXAMPLE IMAGES:



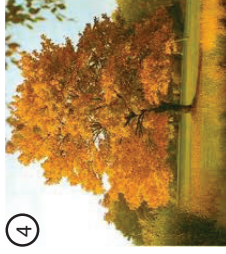
1 Mixed native hedge



2 Level surface



3 Rain garden planting



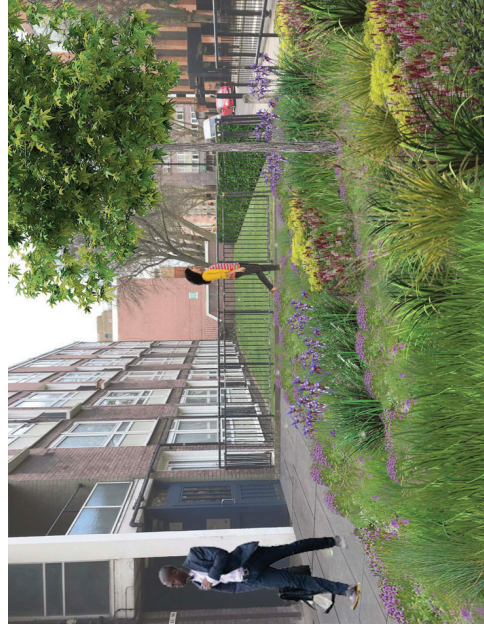
4 New tree planting

The northern section will have a mixed native hedge along the frontage providing privacy for ground floor flats and a pollution filter for all residents.

The southern section will focus on a rain garden which will help alleviate any standing water issues that exist.

The paving will be lifted, cleaned and raised to create a level surface with the exiting concrete pathway. Rain water will drain into the rain garden.

The rain garden will be full of plants, trees and grasses that will increase biodiversity as well as create an attractive buffer between the estate and Stanhope Street.



View 1 Looking north



View 2 Looking south