





Making your neighbourhood safer and healthier

The Covid-19 pandemic has changed how people in Camden live, travel and work. We want our streets to have more safe space for everyone to walk and cycle, for children to get to and from school safely and healthily, for businesses to be able to flourish, to reduce carbon emissions from vehicles and for you to be breathing cleaner air.

We want to ensure that our streets support a strong recovery from the pandemic and provide a lasting legacy of greener, safer, healthier travel. Whether it's an essential journey like taking your children to school, getting to work or just popping out to enjoy your local park we want you to love where you live, and to love Camden.

To help we are introducing Healthy School Streets which create a safer and healthier environment by temporarily closing roads to traffic outside schools during drop-off and pick-up times. This allows more children to walk, cycle or scoot to school, with less air pollution, road danger and congestion. Healthy School Streets help to discourage car trips, particularly amongst parents/carers, by providing a safe and inviting space for more walking, cycling and scooting.



Thank you for your comments



Over three weeks during September and October 2022 we ran a consultation on whether we should make the trial Healthy School Street scheme on Islip Street permanent. Thank you to everyone who took the time to share their views. We are now contacting all properties in the area previously consulted, along with local and statutory groups and ward councillors, to inform them of the outcome of the consultation.

What's going to change?

On the 21st November 2022, Camden's Director of Environment and Sustainability approved the following **permanent changes**:

- The Healthy School Street motor vehicle restrictions on Islip Street. The scheme restricts non-exempt motor vehicles between 8.15am – 9.15am and 3pm – 4pm, Monday to Friday during term time only.
- Newly extending the restricted area to start at the junction with Kentish Town Road. This will mean that this further section of Islip



Street along with Frideswide Place and Wolsey Mews (to the junction with Caversham Road) will become part of the timed restriction area. Residents living within this area will be eligible to apply for an exemption.

- The year round timed waiting restrictions on Wolsey Mews (between the junction of Islip Street and Caversham Road) between 8.15am – 9.15am and 3pm – 4pm, Monday to Friday
- The pavement widening outside the school with an extension of 10.7 metres further to the east and widening the pavement at the junction of Hammond Street and Islip Street.
- Newly relocating two car club bays from Islip Street to Caversham Road.
- The northbound 'at all times' motor vehicle restriction on Hammond Street. The planters will be replaced with a permanent planted area with the ability to absorb road surface water.
- Installing two new bike hangars on the road outside 19 Islip Street, creating secure parking space for up to 12 standard bikes for local residents.

Find out more

You can read the decision report relating to the above which includes our responses to the feedback received, and find out more about exemptions, by visiting:

camden.gov.uk/healthy-school-streets.

The permanent changes to the scheme, including the extension to the junction with Kentish Town Road and installation of the bike hangars, will take place later this year. If you would like to register your interest for a space in one of the bike hangars, please email us at **cycle@camden.gov.uk**.

If you have any questions, comments or concerns regarding the scheme, please contact us at **healthy.school.streets@camden.gov.uk**. If you do not have access to the internet, please call us on 020 7974 8796 to request a call back from an officer.

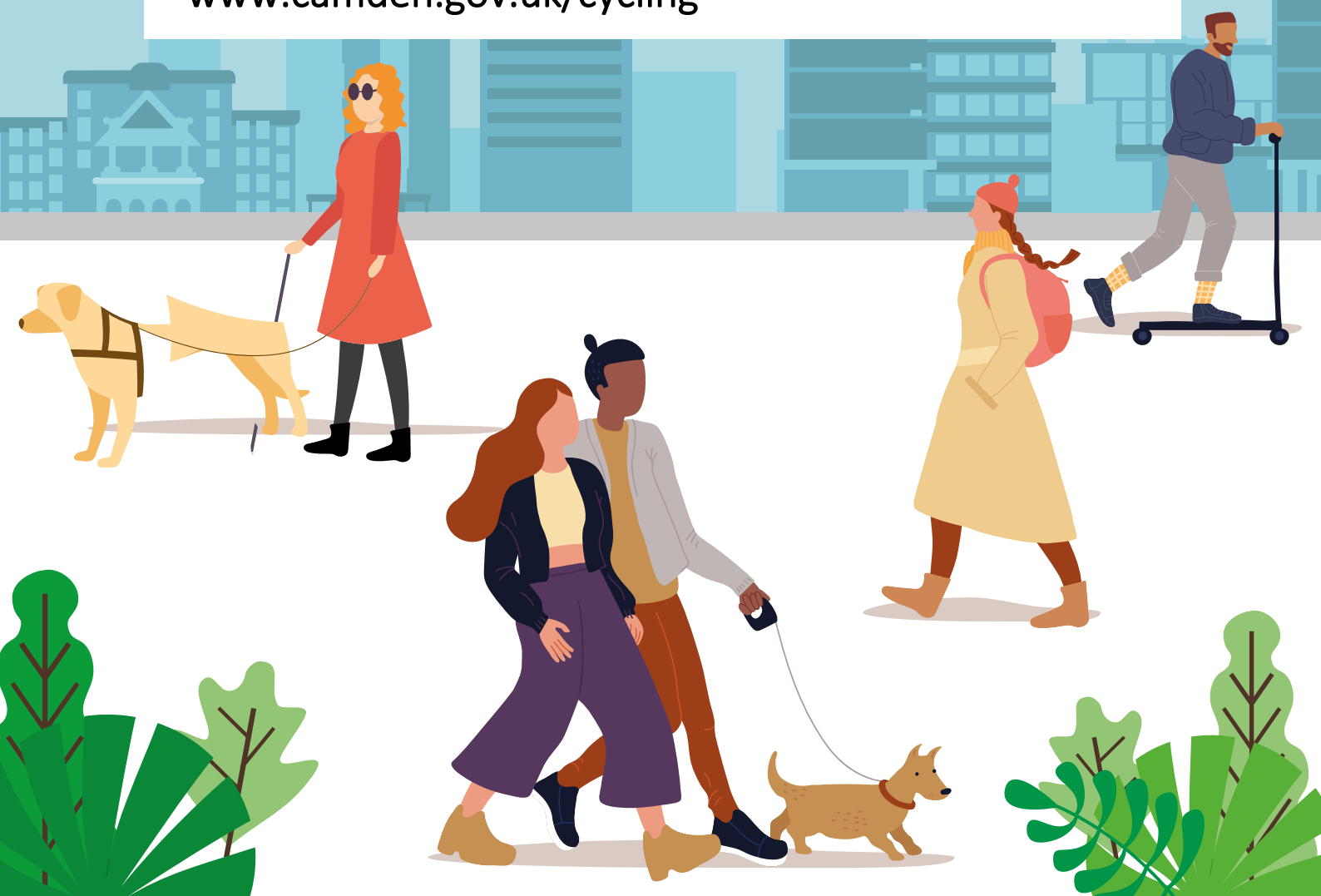
Find out more

To find out more on how we are making travel safer in Camden or to receive this letter in large print or another language contact us: www.camden.gov.uk/making-travel-safer-in-camden
safetravel@camden.gov.uk / 020 7974 4444

To give your suggestions and feedback visit:
safetravelcamden.commonplace.is

To learn to cycle for the first time, improve your cycling skills or for a bike loan to help you get on your way visit:

www.camden.gov.uk/cycling



Transport Strategy Service, London Borough of Camden, Town Hall,
Judd Street, London, WC1H 9JE