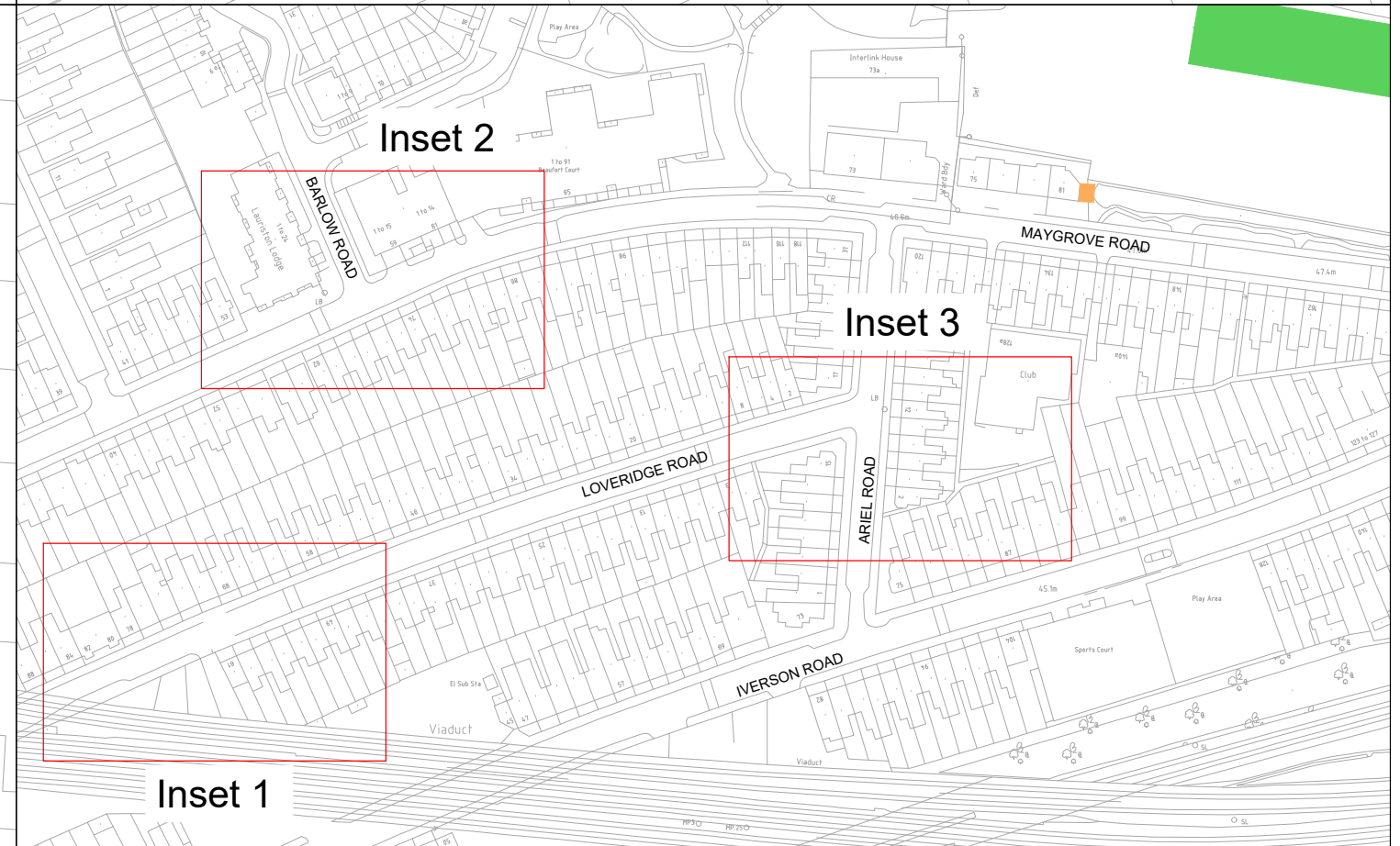
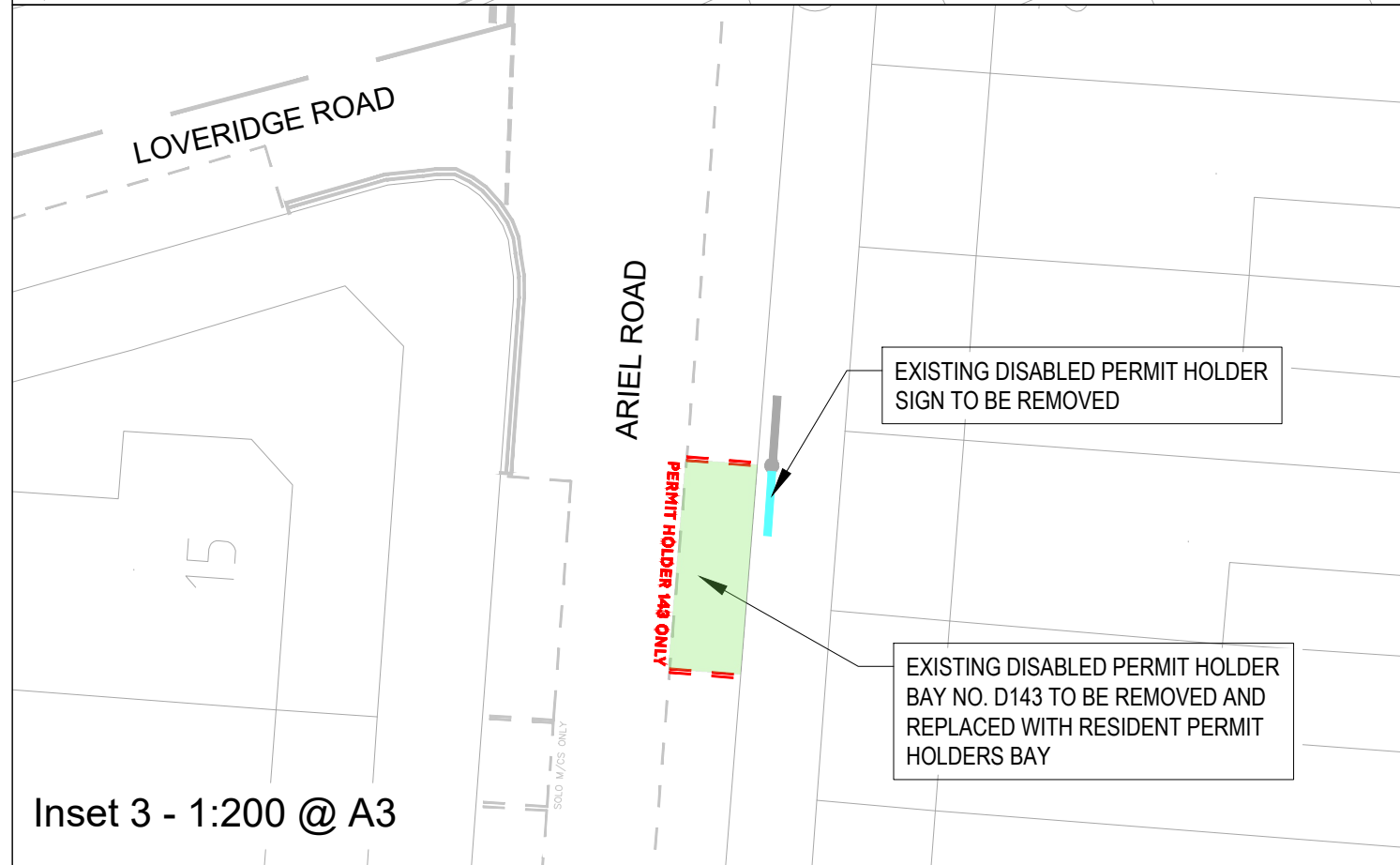
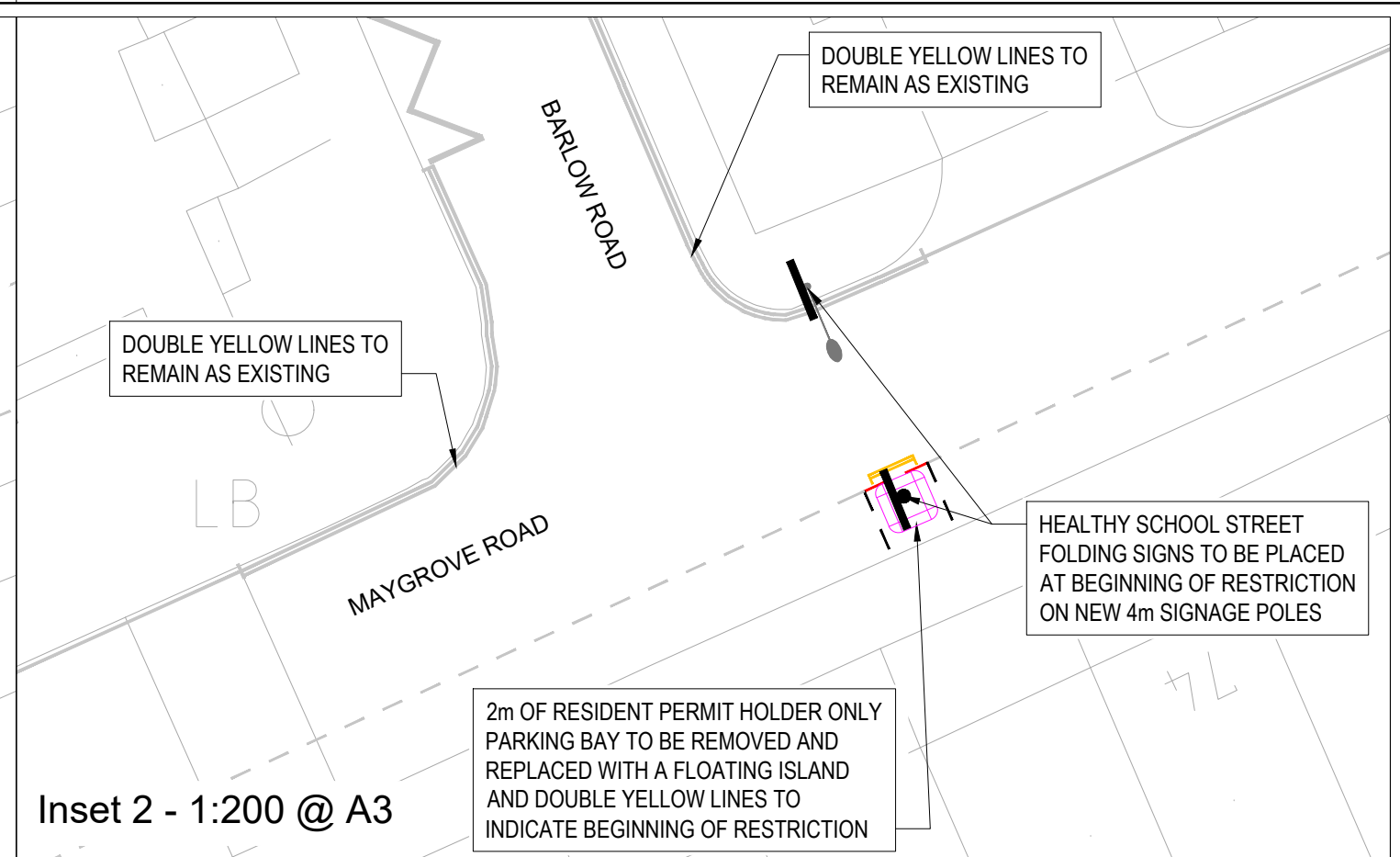
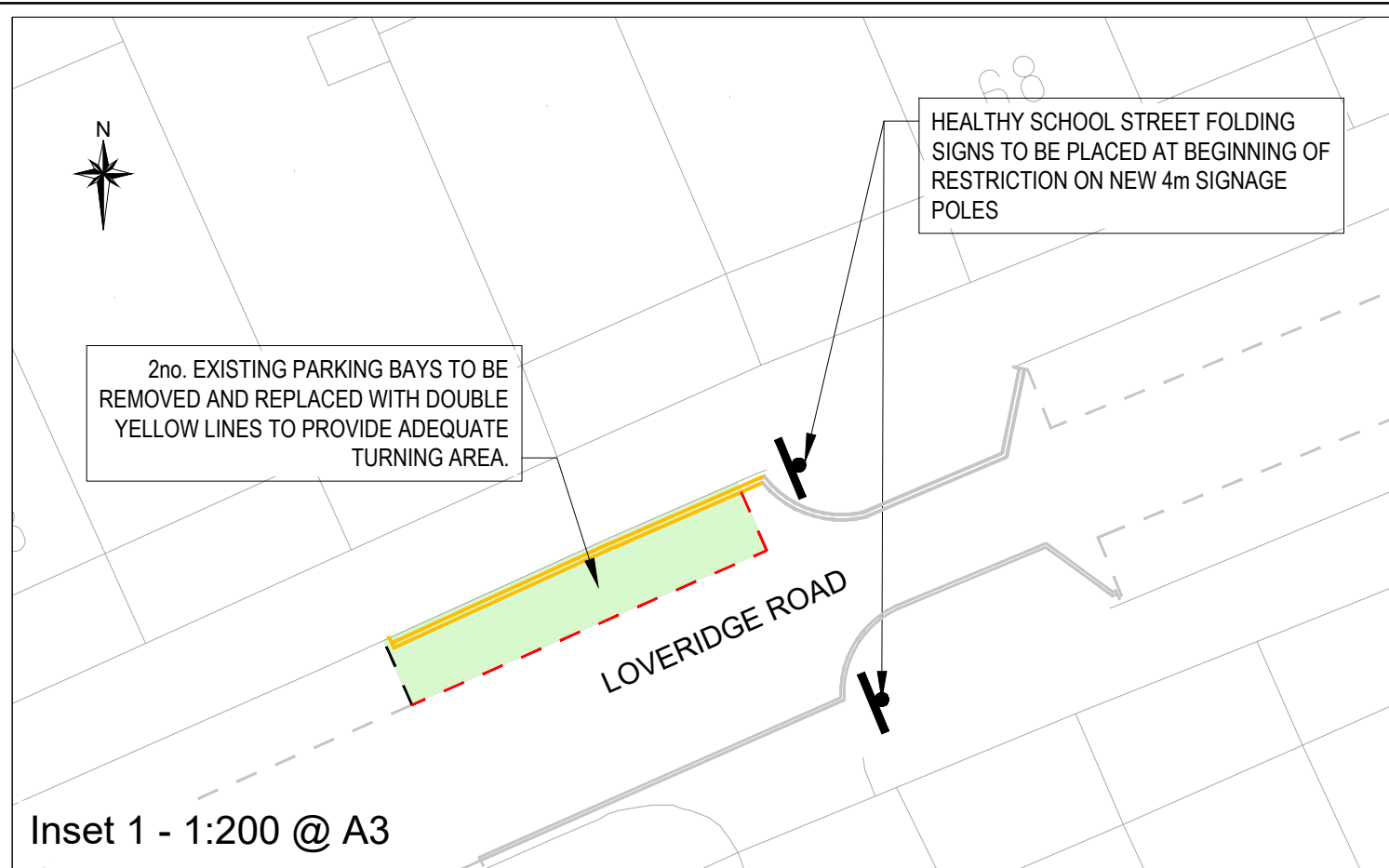
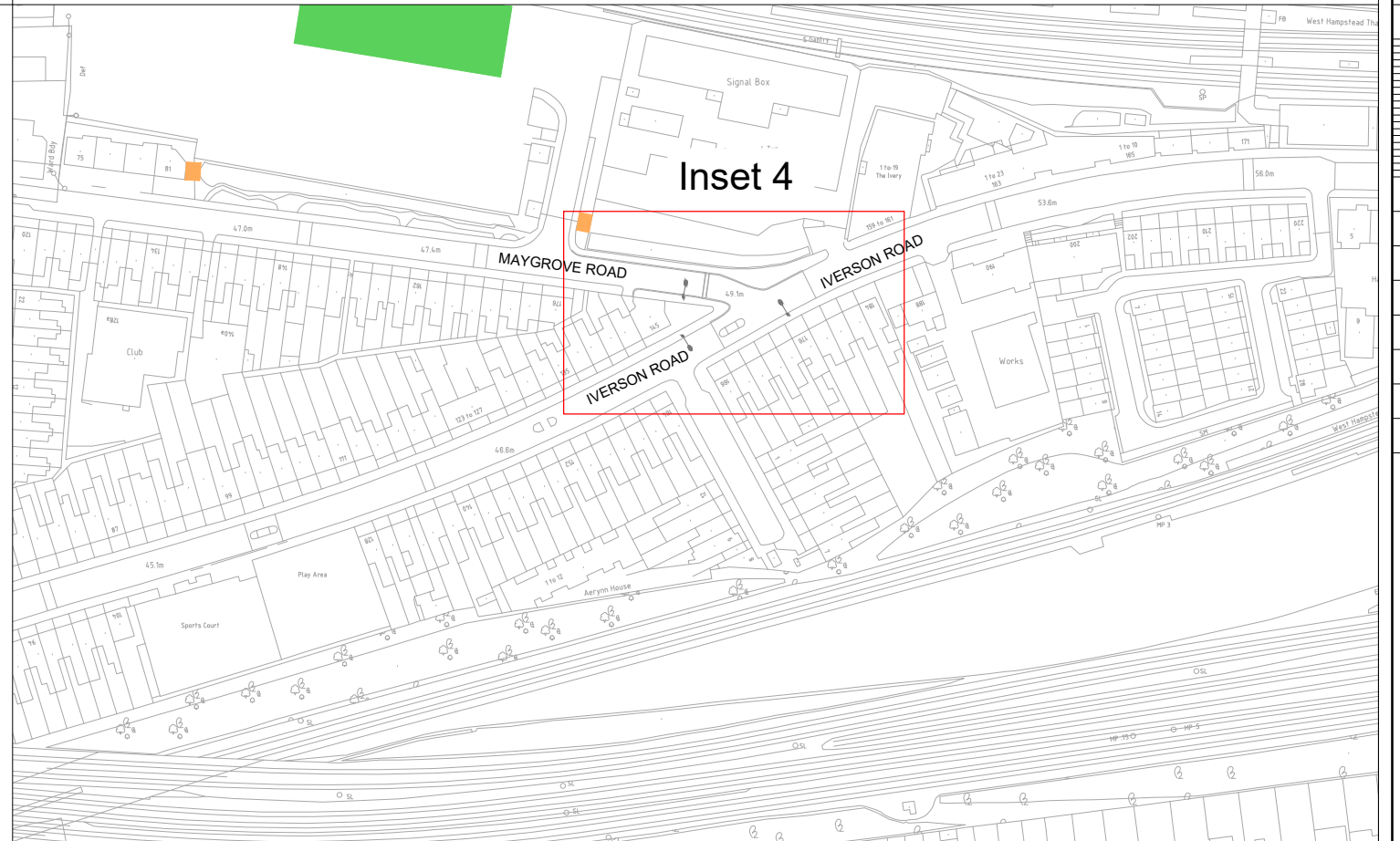
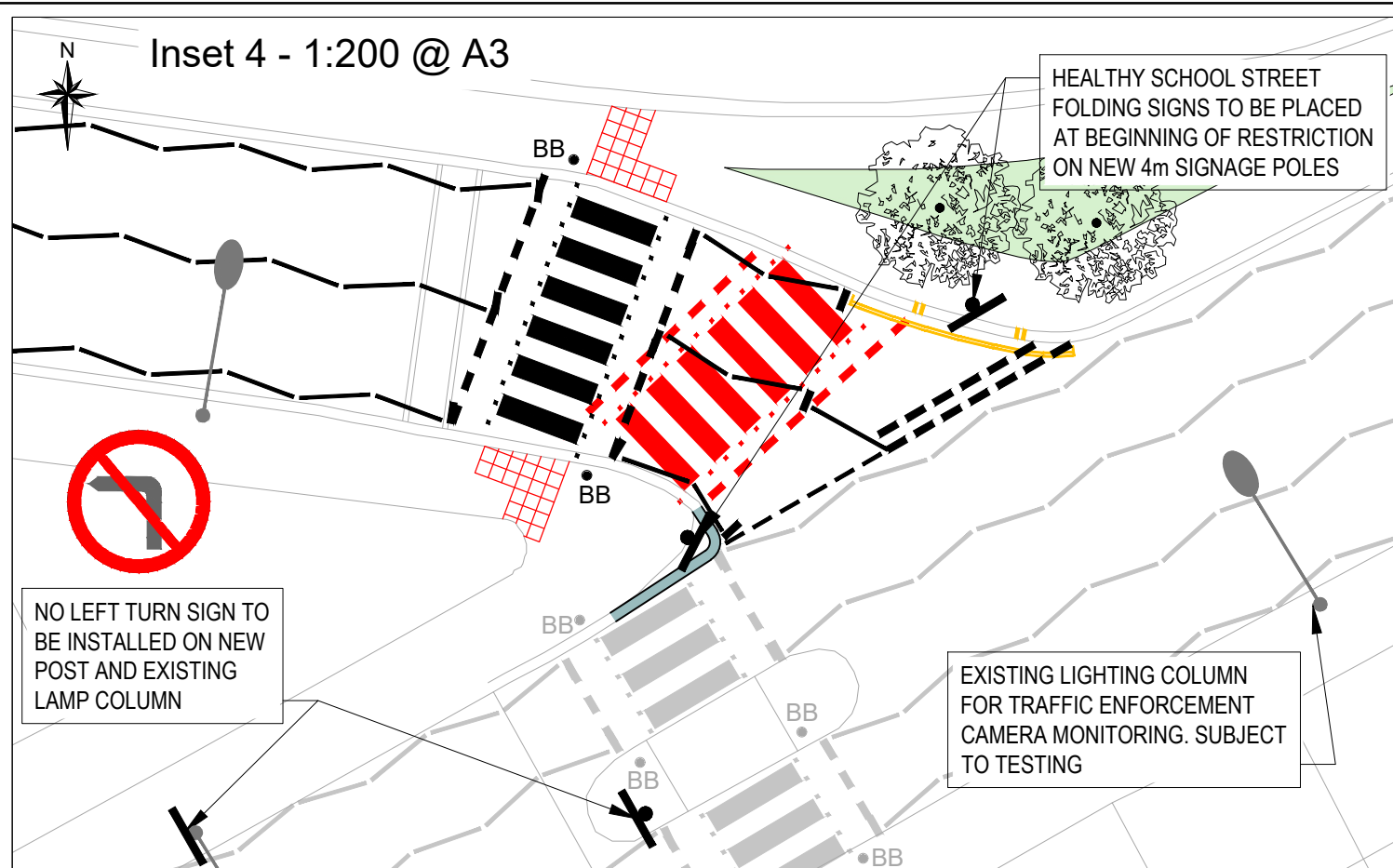


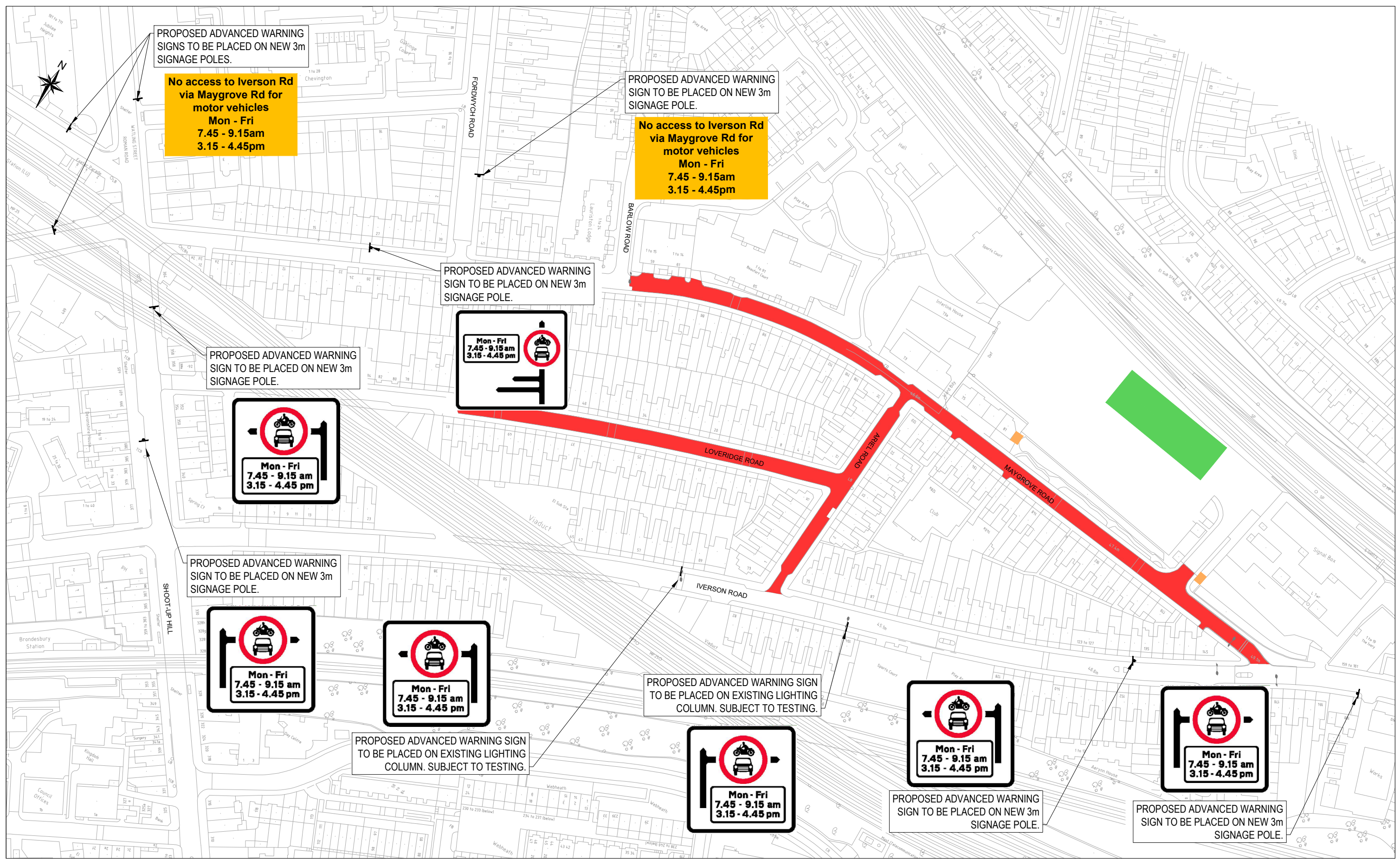
Rev	By	Date	Amendments



Rev	By	Date	Amendments



Rev	By	Date	Amendments



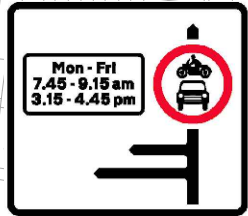
PROPOSED ADVANCED WARNING SIGNS TO BE PLACED ON NEW 3m SIGNAGE POLES.

No access to Iverson Rd via Maygrove Rd for motor vehicles
Mon - Fri
7.45 - 9.15am
3.15 - 4.45pm

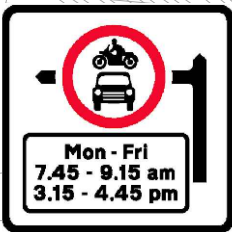
PROPOSED ADVANCED WARNING SIGN TO BE PLACED ON NEW 3m SIGNAGE POLE.

No access to Iverson Rd via Maygrove Rd for motor vehicles
Mon - Fri
7.45 - 9.15am
3.15 - 4.45pm

PROPOSED ADVANCED WARNING SIGN TO BE PLACED ON NEW 3m SIGNAGE POLE.



PROPOSED ADVANCED WARNING SIGN TO BE PLACED ON NEW 3m SIGNAGE POLE.



PROPOSED ADVANCED WARNING SIGN TO BE PLACED ON NEW 3m SIGNAGE POLE.



PROPOSED ADVANCED WARNING SIGN TO BE PLACED ON EXISTING LIGHTING COLUMN. SUBJECT TO TESTING.

PROPOSED ADVANCED WARNING SIGN TO BE PLACED ON EXISTING LIGHTING COLUMN. SUBJECT TO TESTING.



PROPOSED ADVANCED WARNING SIGN TO BE PLACED ON NEW 3m SIGNAGE POLE.



PROPOSED ADVANCED WARNING SIGN TO BE PLACED ON NEW 3m SIGNAGE POLE.

Rev	By	Date	Amendments