





Making your neighbourhood safer and healthier

The Covid-19 pandemic has changed how communities live, travel and work. Many of us have been spending more time closer to home, making our local town centres more important than ever. We want our streets to have more space for everyone to walk and cycle, for you to be breathing cleaner air, for children to get to and from school safely and for businesses to be able to flourish.

To help, we will be making changes in the lower part of Kilburn High Road to make it easier for people to get around by bike and bus by installing new sections of cycle lane. We are also standardising and extending bus lane hours of operation as well as adding a short section of new bus lane. **This is the first stage of a bigger Kilburn High Road scheme to transform the town centre, making it safer to shop, visit and travel around.**



Thank you for your comments



From January to February 2021, we ran a 2 week consultation on the changes we proposed for this area. Thank you to everyone who took the time to share their views. We had 200 responses and following the consultation we have made the decision to continue with the scheme as a trial. You can read the decision report relating to this and our feedback to the consultation responses on our website.

What's the challenge on Kilburn High Road?

Kilburn High Road is a major road with significant amounts of motor vehicles using this route. It has also had a very high number of road traffic casualties in recent years; with 54 pedestrian casualties recorded between 2016 and 2018, of which 2 were fatal and 11 serious. As well as being a major A-road, the road is an important bus route with the lower part of Kilburn High Road carrying five bus routes.

We want to transform the town centre for pedestrians and shoppers and improve the very poor road safety record of this road. This scheme will help to deliver the Councils'



transport priorities including increasing walking and cycling, improving air quality and making our streets and transport networks safe, accessible and inclusive for all.



What's going to change?

Following the public consultation and the decision to proceed with the trial, we will be making changes to Kilburn High Road to improve road safety, provide better walking and cycling infrastructure for pedestrians and cyclists, and improved bus priority infrastructure.

To do this we will:

- Standardise and extend bus lane hours of operation. Bus lane operational hours will be Monday - Friday 7am - 10am and 4pm - 7pm, Saturday - Sunday 10am - 7pm
- Add a short section of new bus lane south of Kilburn Priory which will lead into the existing southbound bus lane. This will be operational Monday - Saturday 7am - 10am and 4pm - 7pm
- Make changes to the waiting and loading restrictions within bus and cycle lanes. 24-hour bus and cycle lanes are not proposed at present to balance the needs of local businesses
- Add short sections of new cycle lane between Kilburn Priory and West End Lane
- Add benches and trees to the area.

Work will commence Monday 31st January 2022, between 8am and 5.30pm (Mon – Sat) and is expected to take 8 weeks. Some noise should be expected.



How can you give your views?

The changes will be implemented as an experimental scheme. This allows us to trial changes on streets as an experiment so that we can see how they work before any decision on whether to make them permanent is made.

A full consultation on the trial will take place in June 2022, with a decision on whether the scheme should be made permanent taking place by 18 September 2022

You are welcome to comment positively or negatively, at any point during the trial period using the Commonplace website. There is a quick survey to ask you some questions about how you feel about the trial scheme and suggest improvements. You can also contact us by email or phone.

You can use this QR code to access the site from your phone. If you'd prefer to fill out a paper form just get in touch with us via the details at the end of this letter.

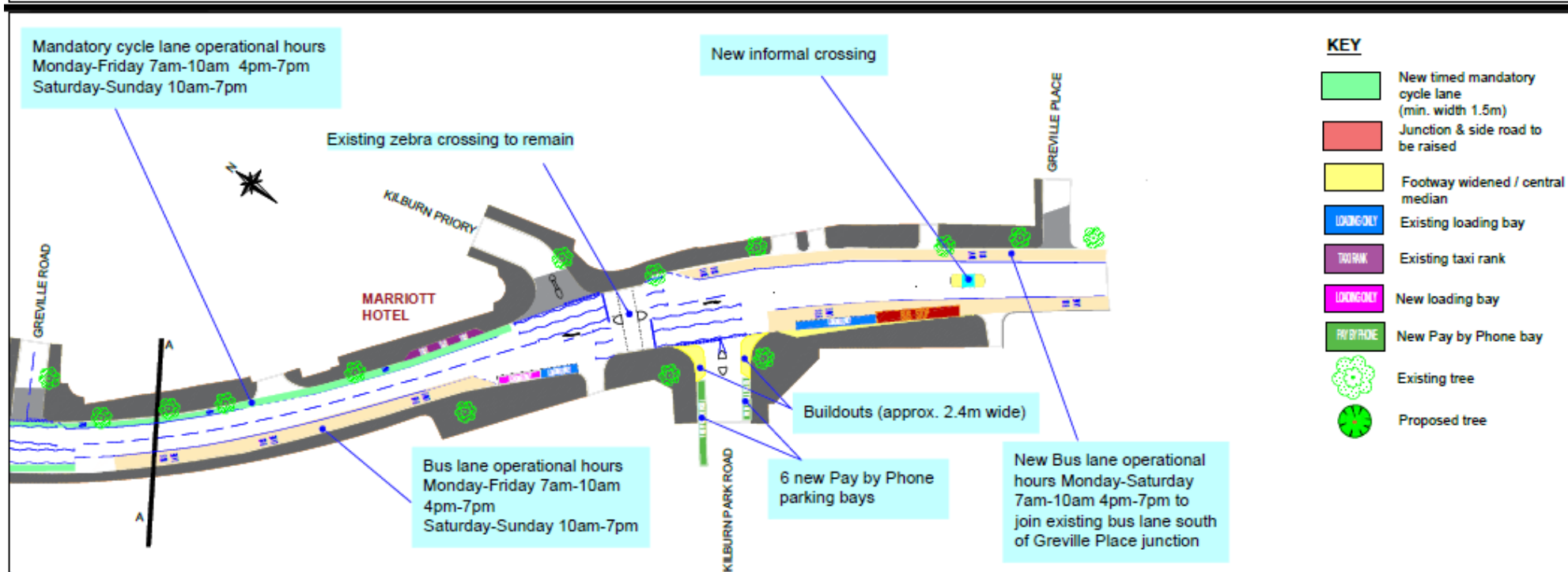
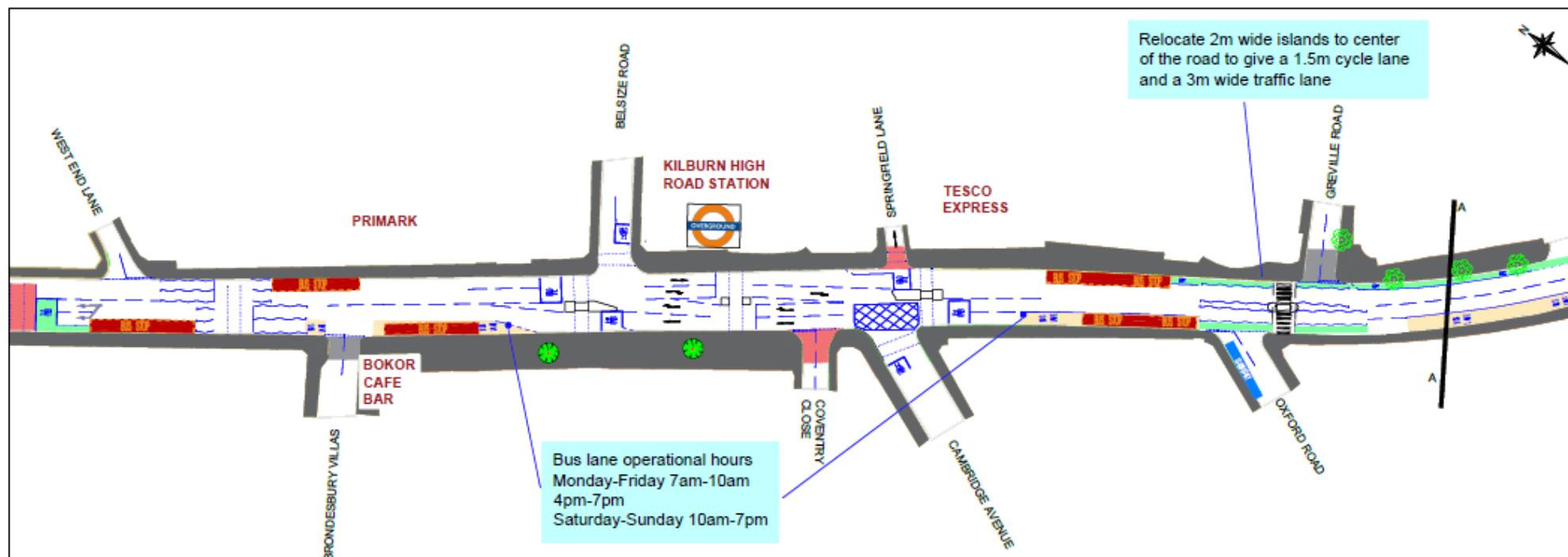


safetravelcamden.commonplace.is

See the changes

The drawings overleaf may also help you understand how the changes will look although the final scheme may look slightly different.

LOWER KILBURN HIGH ROAD PROJECT (WEST END LANE TO GREVILLE PLACE)



KEY

-  New timed mandatory cycle lane (min. width 1.5m)
-  Junction & side road to be raised
-  Footway widened / central median
-  Existing loading bay
-  Existing taxi rank
-  New loading bay
-  New Pay by Phone bay
-  Existing tree
-  Proposed tree

Find out more

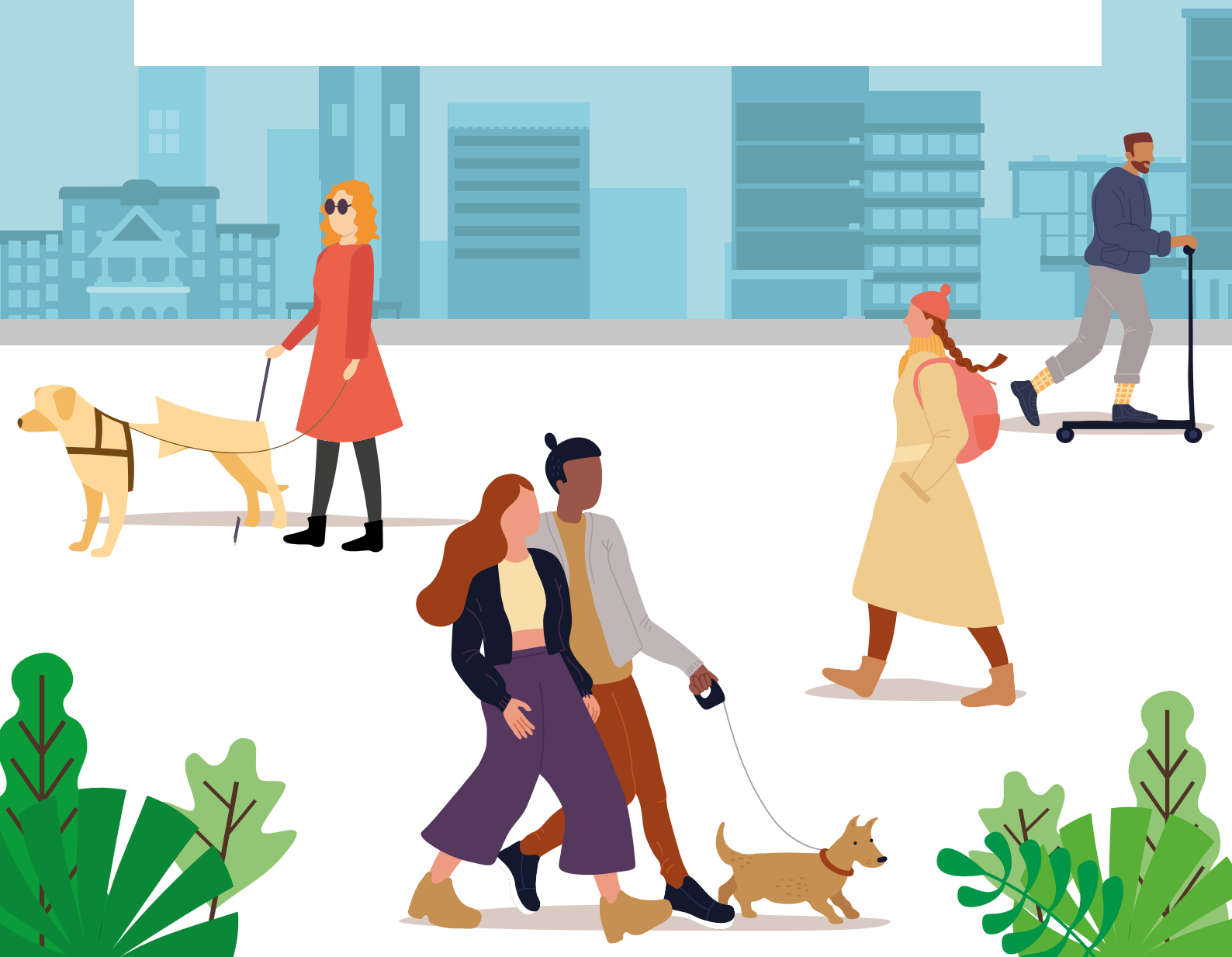
To find out more on how we are making travel safer in Camden or to receive this letter in large print or another language contact us:

www.camden.gov.uk/making-travel-safer-in-camden

safetravel@camden.gov.uk

020 7974 4444

To give your suggestions and feedback visit:
safetravelcamden.commonplace.is



Transport Strategy Service, London Borough of Camden, Town Hall,
Judd Street, London, WC1H 9JE