



# Kilburn High Road (lower section) Safe and Healthy Streets: Consultation Information sheet

## Proposals to make the trial changes on lower Kilburn High Road permanent

The Covid-19 pandemic has changed how people live, travel and work. We want our streets to have more safe space for everyone to walk and cycle, for children to get to and from school safely and healthily, for businesses to be able to flourish, to reduce carbon emissions from vehicles and for you to be breathing cleaner air.

We want to ensure that our streets support a strong recovery from the pandemic and provide a lasting legacy of greener, safer, healthier travel.

To help we have been making changes in our Safe and Healthy Streets Programme. This included making trial changes on Kilburn High Road in 2021/2022. These changes sought to make the section of the High Road between Belsize Road and Greville Place safer and more welcoming particularly for pedestrians, cyclists and bus users.



## About the Kilburn High Road Safe and Healthy Streets Scheme

The upper and middle sections of Kilburn town centre are busy, dirty and dangerous for pedestrians, shoppers, cyclists and other vulnerable road users such as powered two-wheelers. As part of a wider scheme for the entire town centre, we trialled a Safe and Healthy Streets scheme on the lower end of Kilburn High Road, using an Experimental Traffic Order (ETO). The decision report related to this ETO can be viewed on our [website](#).

This decision report noted that a further consultation, after approximately 12 months of the trial scheme approval, would take place relating to any proposed permanent changes. Due to challenges in gaining approvals for the construction of the scheme on such a busy road, the trial scheme went live in April 2022. While we are consulting on the scheme now, we will continue to monitor the changes if the scheme is made permanent.





### **Making it easier to cross the road near Milad supermarket**

We installed an island in the road to narrow this wide section of road to reduce speeding and make it easier for people to cross the road.

### **Making the cycle lane 24/7**

The new cycle lane from (just north of) Greville Road to Kilburn Priory would be operational 24/7 to provide a safer cycling link at any time it is needed.

### **Closing Springfield Lane**

Springfield Lane is proposed to be closed at Kilburn High Road to make the lane two-way for cycling and driving. Loading would be permitted within the lane.

### **Adding new cycle stands**

We are proposing to add more cycle stands at key locations, with all existing cycle stands changed to match the same style to deliver a consistent look and feel in the area.

### **Adding a cycle hangar**

We are proposing to add a secure lock cycle storage point to the parking space on Kilburn Priory Road, just behind the Marriott hotel. Spaces in the cycle hangar can be rented by nearby residents.

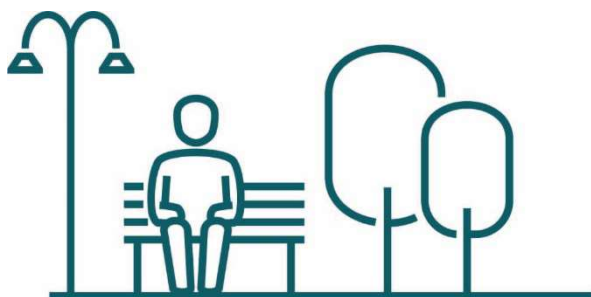
### **Adding more benches**

To help people with limited mobility, particularly older persons, regularly spaced benches are proposed where pavement space allows.

### **Removing unnecessary street furniture**

Where we can, we would remove unnecessary bollards and guard railing to make the street look clearer and easier to move around.

## What happens next?



After the consultation a decision report will be produced and published online via all Council websites. Local residents and stakeholders will be notified of the outcome. The report will consider the consultation responses, relevant policies and other data/information.

The report will then outline if at the end of the trial period, the experimental scheme should be made permanent, modified or allowed to lapse. If a decision is made to approve any permanent proposals, the construction of any final changes would then take place.

The consultation closes on Tuesday <sup>th</sup> July 2022.