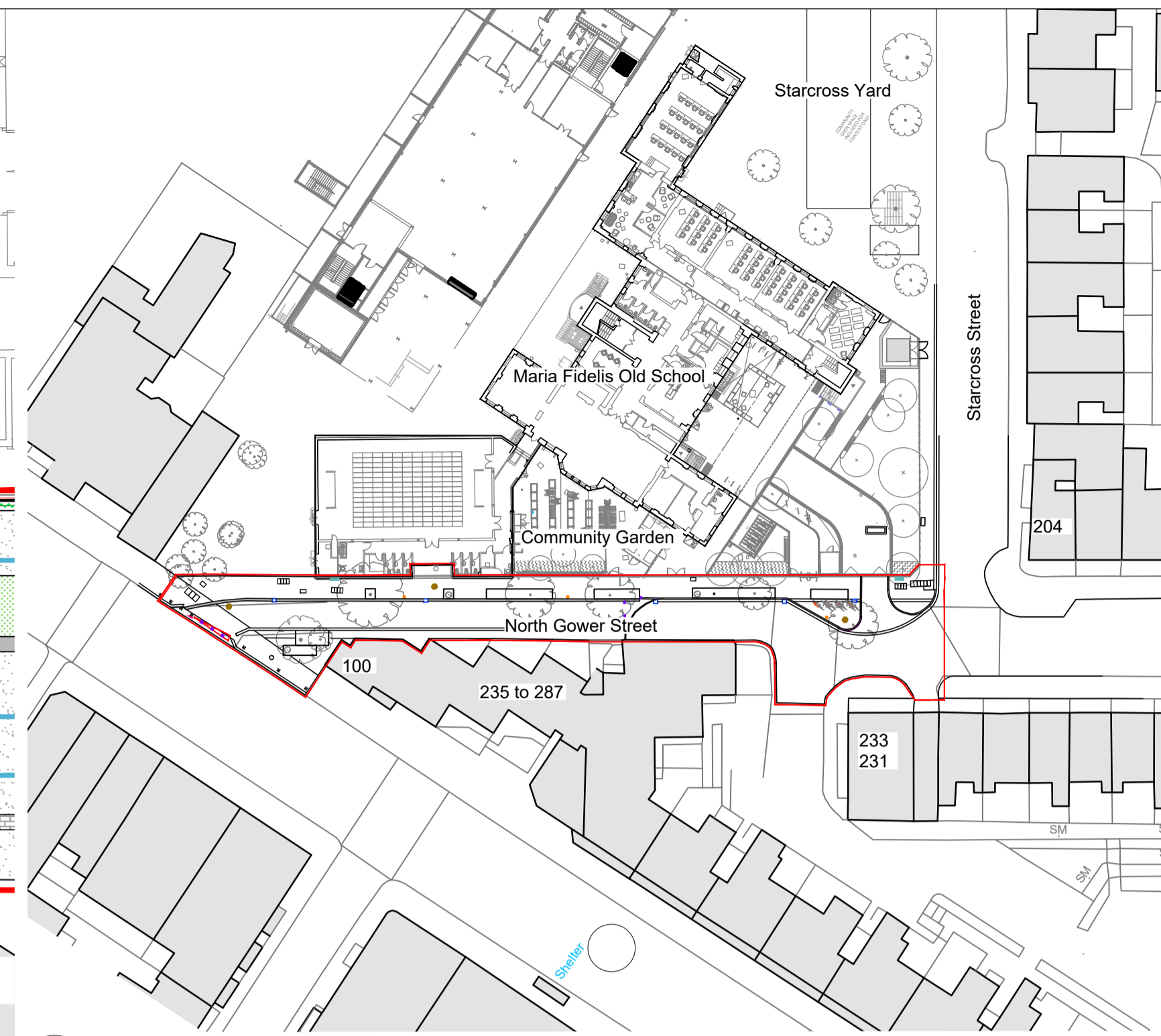


1 General Arrangement Plan 1 of 2
100

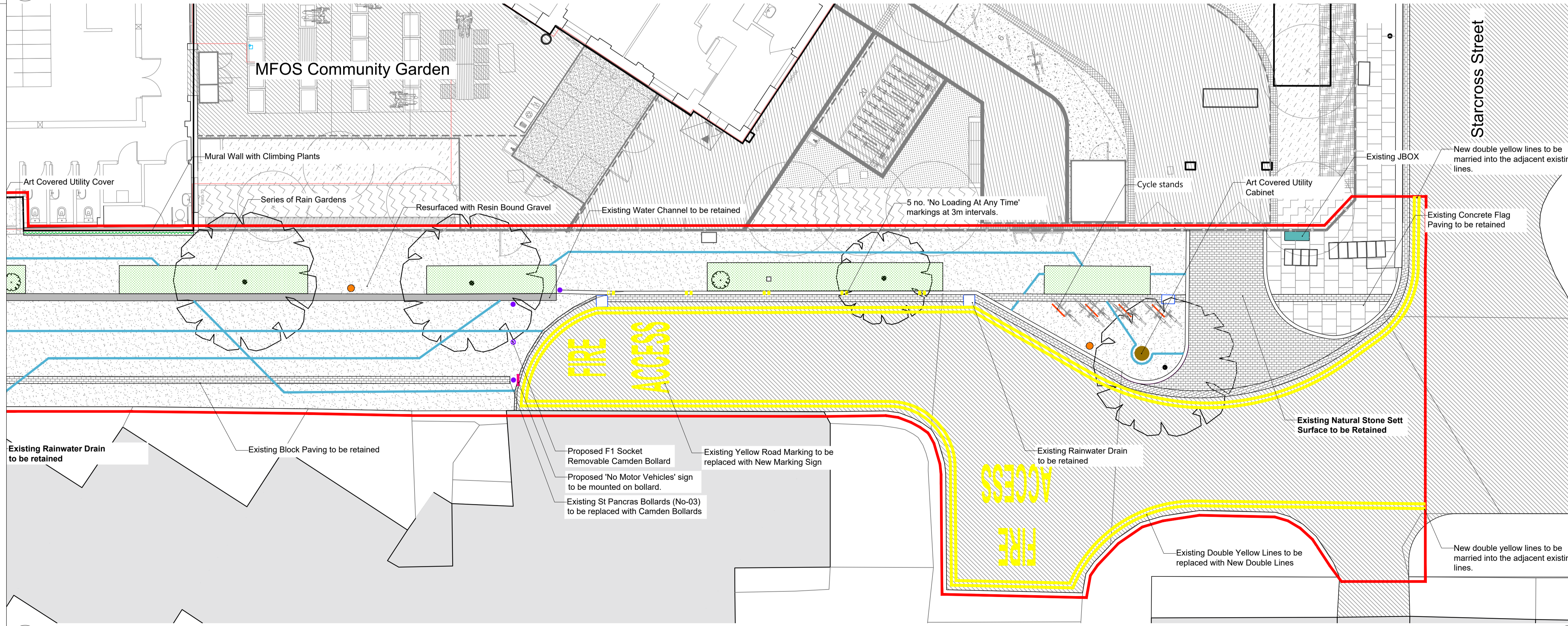


3 Location Plan Scale: N.T.S.
100

Road Marking Note:
All road markings to comply with the London Traffic Signs Manual.
Letter sizing to follow Table 11-2 of the London Traffic Signs Manual, specifying the width for elongated characters.

- Note:**
- This drawing must be read in conjunction with all other landscape drawings and specifications.
 - Do not scale from the drawing; use only the figured dimensions. All dimensions must be checked on site.
 - If any conflict or inconsistency occurs between the drawing and other information, the contractor must notify LDA Design immediately before continuing work.
 - The contractor must be aware of all buried services and utilities. Paving construction – construction depths and surface finishes are subject to Section 38 Technical Approval.
 - Design by others – Art manhole cover locations are shown for context only.
 - All drainage and surface build-ups require review and input by engineers.

- Legend**
- Scheme Extents
 - Softworks**
 - Existing Trees to be retained
 - Rain Garden & Ornamental Planting: Planting plan and Schedule to 9339_101 and Soft landscape Details to 9339_300
 - Climber Planting Area: Detail refer to Climber Planting Detail 9339_301
 - Hardworks**
 - Existing Asphalt Surface to be retained
 - Existing Natural Stone Sett Surface to be retained
 - Existing 300mm wide Natural Stone Block Boarder to be retained
 - Existing Dished Water Channel to be retained
 - Existing Natural Stone Kerb - 150 or 300mm wide to be retained
 - Existing Manhole Covers
 - Existing Cast Iron Bollards to be retained
 - Existing Lamp Post to be retained
 - Proposed Resin Bound Gravel Surface: 6mm Aztec Gold by Sureset or Similar: Detail refer to 9339_302
 - Proposed Removable Cast Iron Bollards - St Pancras: Detail refer to 9339_302
 - Proposed Removable Cast Iron Bollards - Camden: Detail refer to 9339_302
 - Proposed Fixed Cast Iron Bollards - Camden: Detail refer to 9339_302
 - Proposed Sheffield Cycle stands: Detail refer to 9339_302
 - Proposed Metal Inlays: 10mm wide stainless steel, Detail tbc.
 - Art Manhole Covers: Design by others
 - No Motor Vehicles Signage: Detail refer to 9339_302



2 General Arrangement Plan 2 of 2
100

Rev	By	Date	Amendments
C	KM	23.10.24	Added Bollards
B	KM	15.10.24	Road Marking Updated
A	MD	13.09.24	Stage 4 Submission



Design Team
Transport Strategy Service
London Borough of Camden
5 Pancras Square
Tel 020 7974 5551, Fax 020 7974 6952
DX 2106 Euston, Minicom 020 7974 6866

- NOTES:**
- All dimensions are in metres unless otherwise state.
 - Do not scale from this drawing.
 - Location of lighting columns, trees and size of canopies are indicative.

Project
NORTH GOWER STREET
LANDSCAPE PROPOSAL

Drawing Title
GENERAL ARRANGEMENT PLAN

Scale	1 : 100 @ A1	Date	OCTOBER 2024
Drawn By	MD	File Ref	STAGE 4
Checked By	KM	Dwg Name	
Drawing Location			
Drawing Number	9339_100	Rev.	C