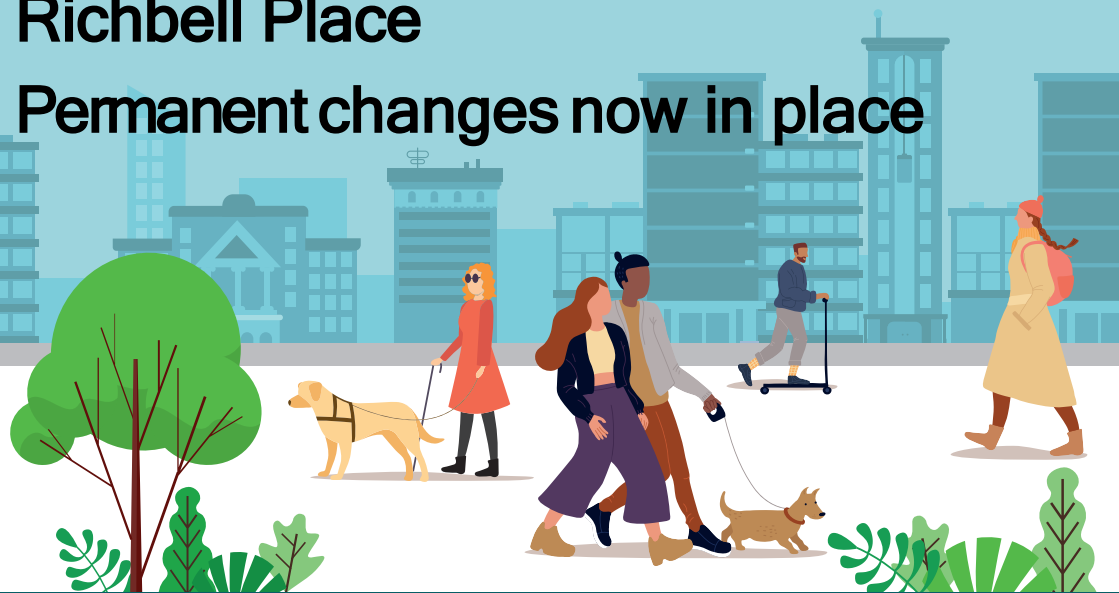


Your Safe and Healthy Streets - August 2022

Richbell Place

Permanent changes now in place



Making your streets safer and healthier

In March 2022 we consulted on whether to make the trial changes on Richbell Place permanent to make it easier to travel by bike between Lambs Conduit Street and Emerald Street. Thank you to everyone who shared their views. We have now made the following permanent changes:

- Keeping eastbound cycling between Lamb's Conduit Street and Emerald Street.
- Keeping signage, on street cycle symbols and other markings to show permitted cycle route.
- Keeping waiting and loading prohibitions (double yellow lines with double kerb blips) along Richbell Place.
- Keeping waiting restrictions on Emerald Street at the junction with Richbell Place (double yellow lines).
- Permanently relocating 1 resident permit holders parking bay (no overall loss of parking).

Find out more



You can read the decision report and our feedback to the 5 consultation responses on our website, which you can access using the link below or the QR code. If you have any questions you can email:

safetravel@camden.gov.uk or call us on:
020 7974 4444

