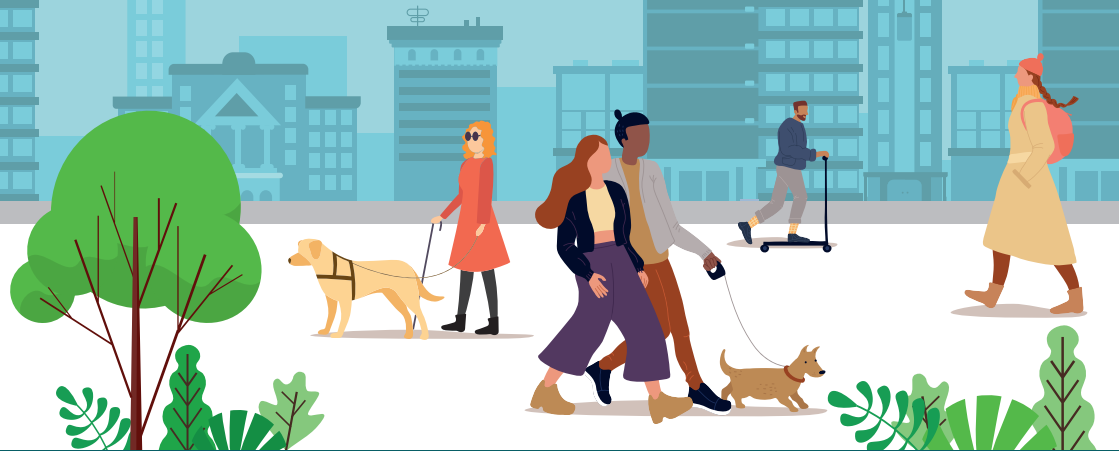


# Your Safe and Healthy Streets - May 2022

## Kidderpore Avenue

### Permanent changes to widen the pavement



# Making your streets safer and healthier

In November and December 2021 we consulted on whether to make the trial changes on Kidderpore Avenue outside St Luke's School permanent. Thank you to everyone who took the time to share their views. We have now decided to keep the following changes permanently:

- Keeping the widened pavement directly outside the school on Kidderpore Avenue.
- The permanent removal of 5 shared use parking bays (permit holders and pay to park) and replacement with 25 metres of double yellow lines directly outside the school on Kidderpore Avenue.
- Adding cycle parking stands and where possible planting new trees in the Autumn

You can read the decision report and our feedback to the consultation responses on our website, which you can access using the link below or the QR code opposite. If you have any questions you can email us at [safetravel@camden.gov.uk](mailto:safetravel@camden.gov.uk) or call us on 020 7974 4444.

## What happens now?

Statutory traffic orders and how you can respond will be displayed on notices on local streets and in the Camden New Journal.



They will also be added to our website:

**[camden.gov.uk/recently-advertised-proposals](https://camden.gov.uk/recently-advertised-proposals)**

