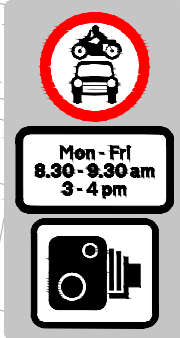
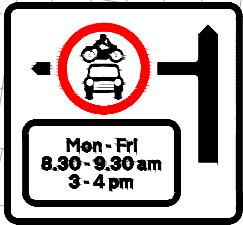


TRAFFIC ENFORCEMENT CAMERA AND SIGNAGE TO BE PLACED ON NEW 6m POLE. SUBJECT TO TESTING

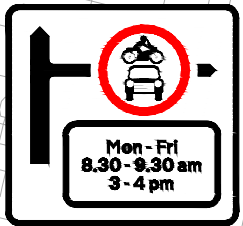
CONTRAFLOW CYCLE FACILITIES TO BE INTRODUCED ON DORNFELL STREET. SEE PAGE 2 FOR DETAIL

ADVANCED WARNING SIGN TO BE PLACED ON EXISTING LIGHTING COLUMN



HEALTHY SCHOOL STREETS TIMED RESTRICTION FOLDING SIGNS TO BE PLACED ON NEW 4m SIGNAGE POLES.

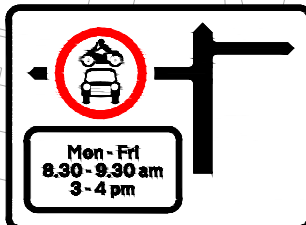
ADVANCED WARNING SIGN TO BE PLACED ON NEW 3m SIGNAGE POLE



EXISTING PUPIL ENTRANCE

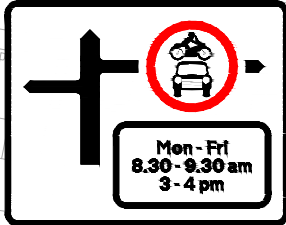
HEALTHY SCHOOL STREET RESTRICTED AREA

ADVANCED WARNING SIGN TO BE PLACED ON EXISTING LIGHTING COLUMN



WEST HAMPSTEAD PRIMARY SCHOOL

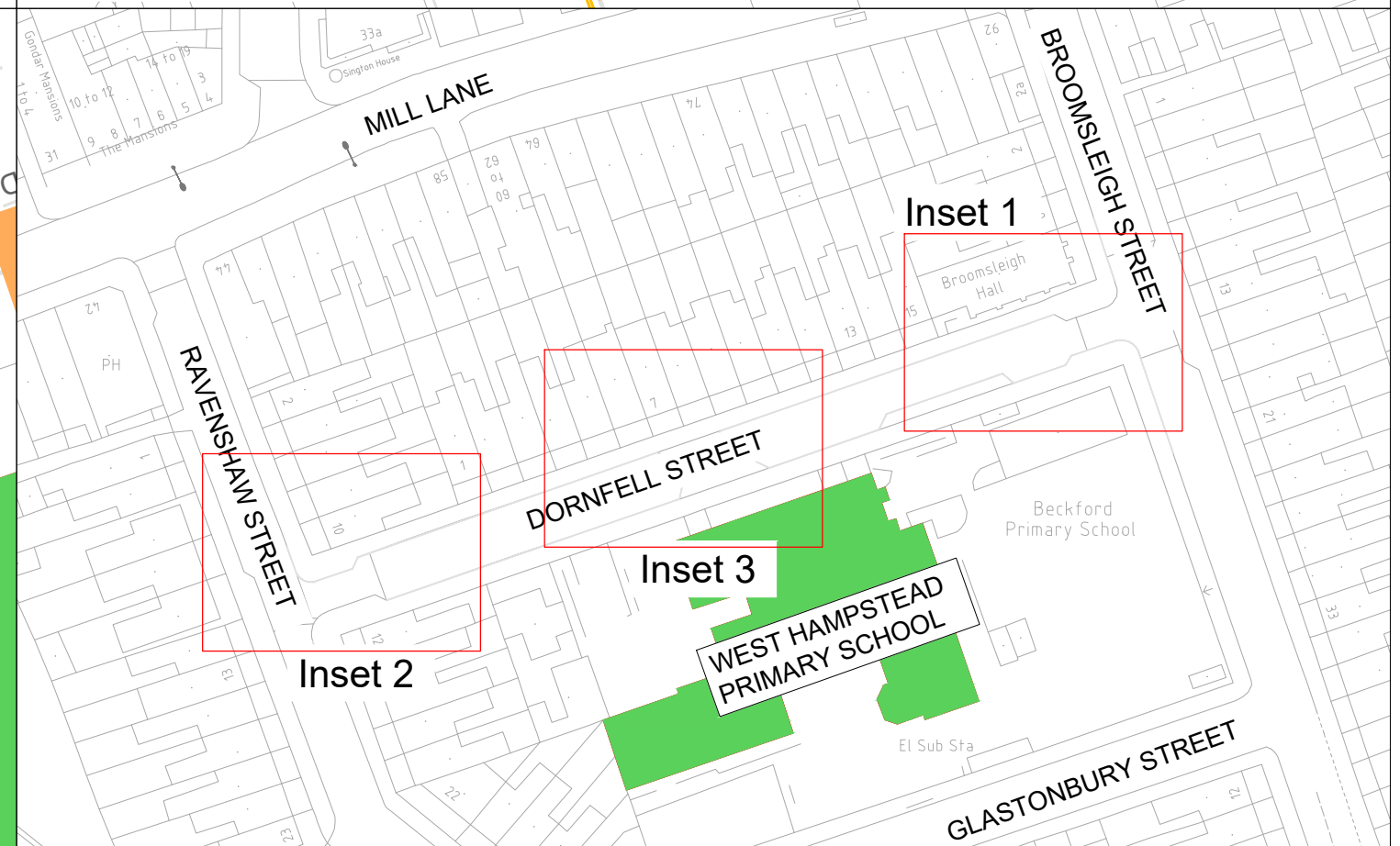
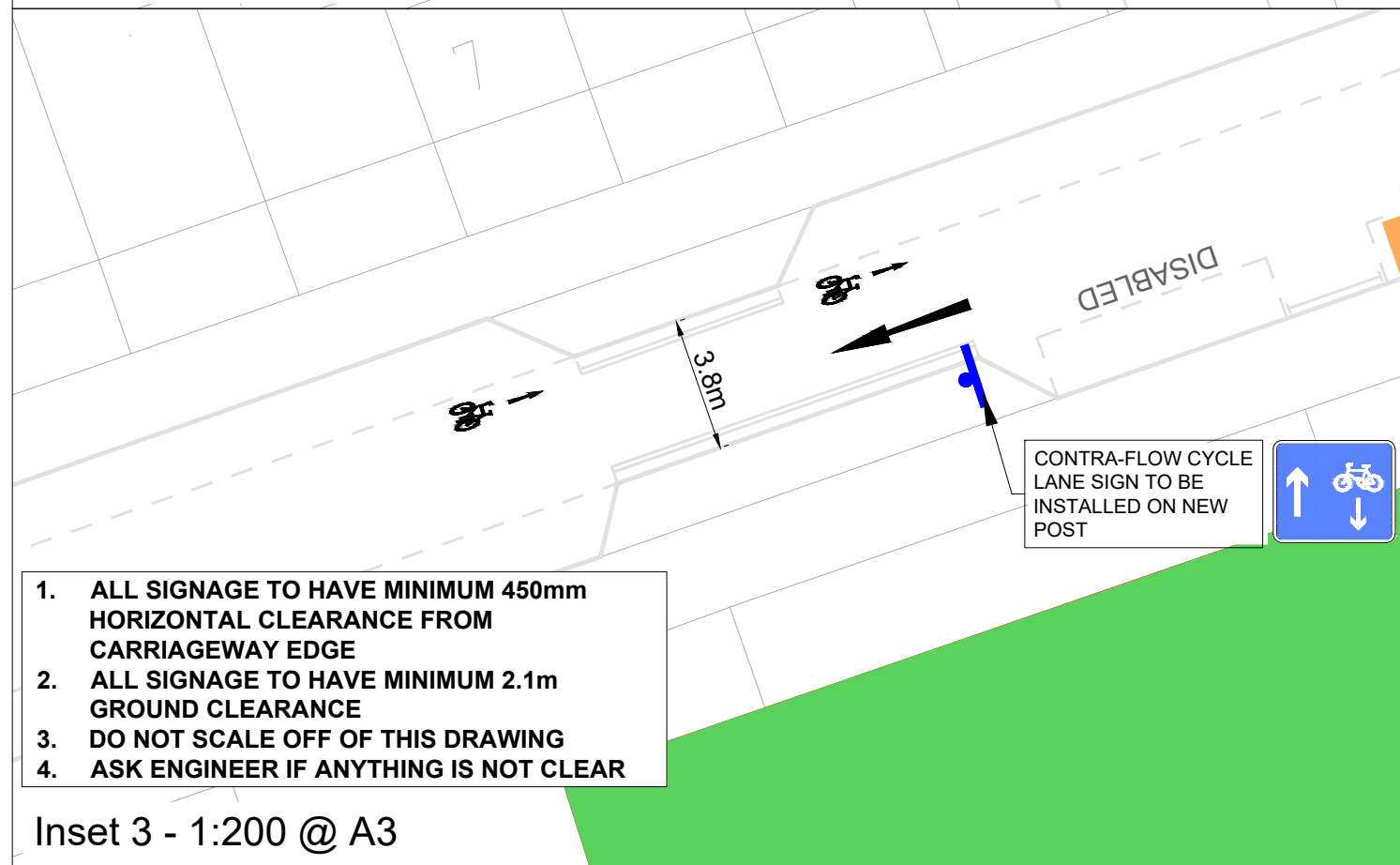
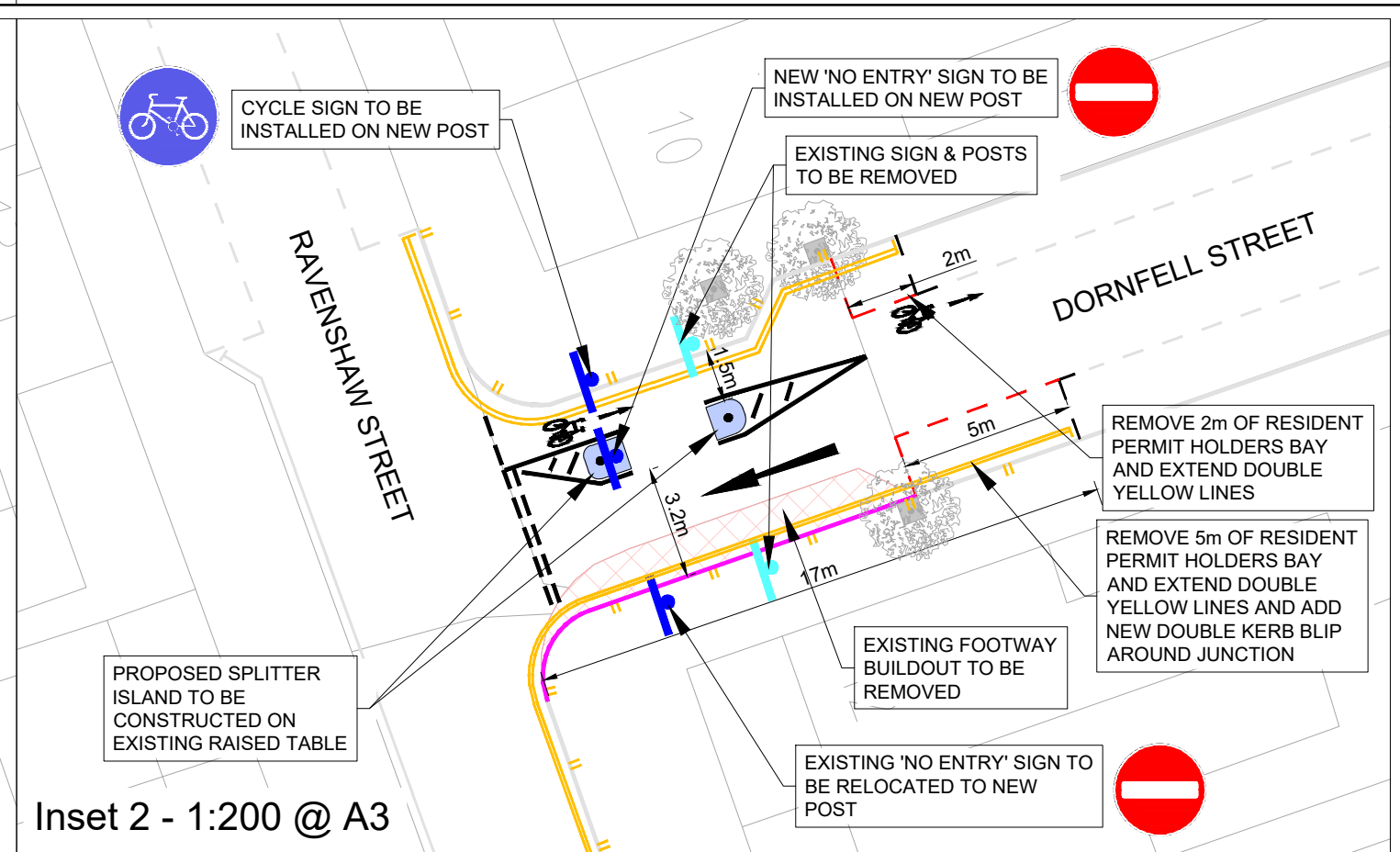
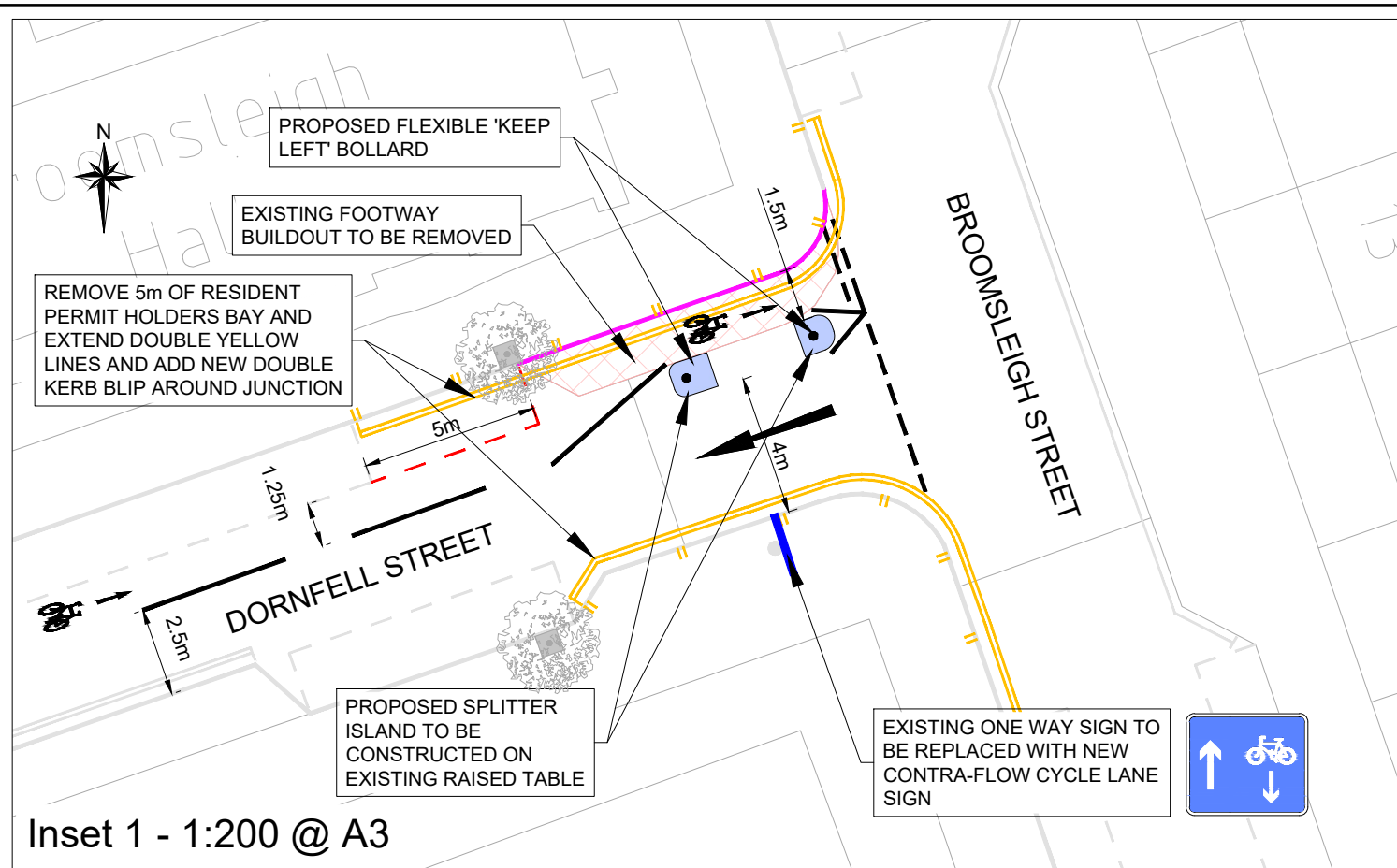
TRAFFIC ENFORCEMENT CAMERA AND SIGNAGE TO BE PLACED ON EXISTING LIGHTING COLUMN. SUBJECT TO TESTING



HEALTHY SCHOOL STREETS TIMED RESTRICTION FOLDING SIGNS TO BE PLACED ON NEW 4m SIGNAGE POLES

ADVANCED WARNING SIGN TO BE PLACED ON EXISTING SIGNAGE POLE. POLE HEIGHT TO BE INCREASED TO 3m

Rev	By	Date	Amendments



1. ALL SIGNAGE TO HAVE MINIMUM 450mm HORIZONTAL CLEARANCE FROM CARRIAGEWAY EDGE
2. ALL SIGNAGE TO HAVE MINIMUM 2.1m GROUND CLEARANCE
3. DO NOT SCALE OFF OF THIS DRAWING
4. ASK ENGINEER IF ANYTHING IS NOT CLEAR

Key

- Existing Road Markings
- Existing Road Markings to be Removed
- Proposed Road Markings
- Existing Footway Buildout to be Removed
- Proposed Kerb Line
- Existing signage to be removed
- Proposed signage

Rev	By	Date	Amendments

Scale NTS @ A3	Date SEPT 22
Drawn By JR	File Ref
Checked By JA	Dwg Name
Drawing Location	
Drawing Number	Rev. A